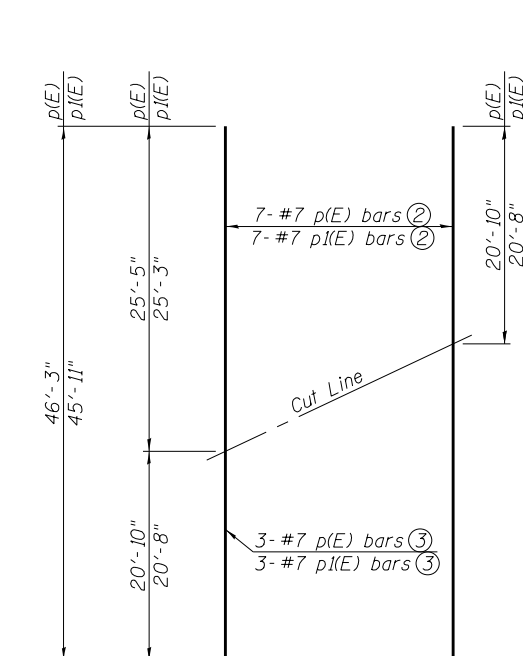
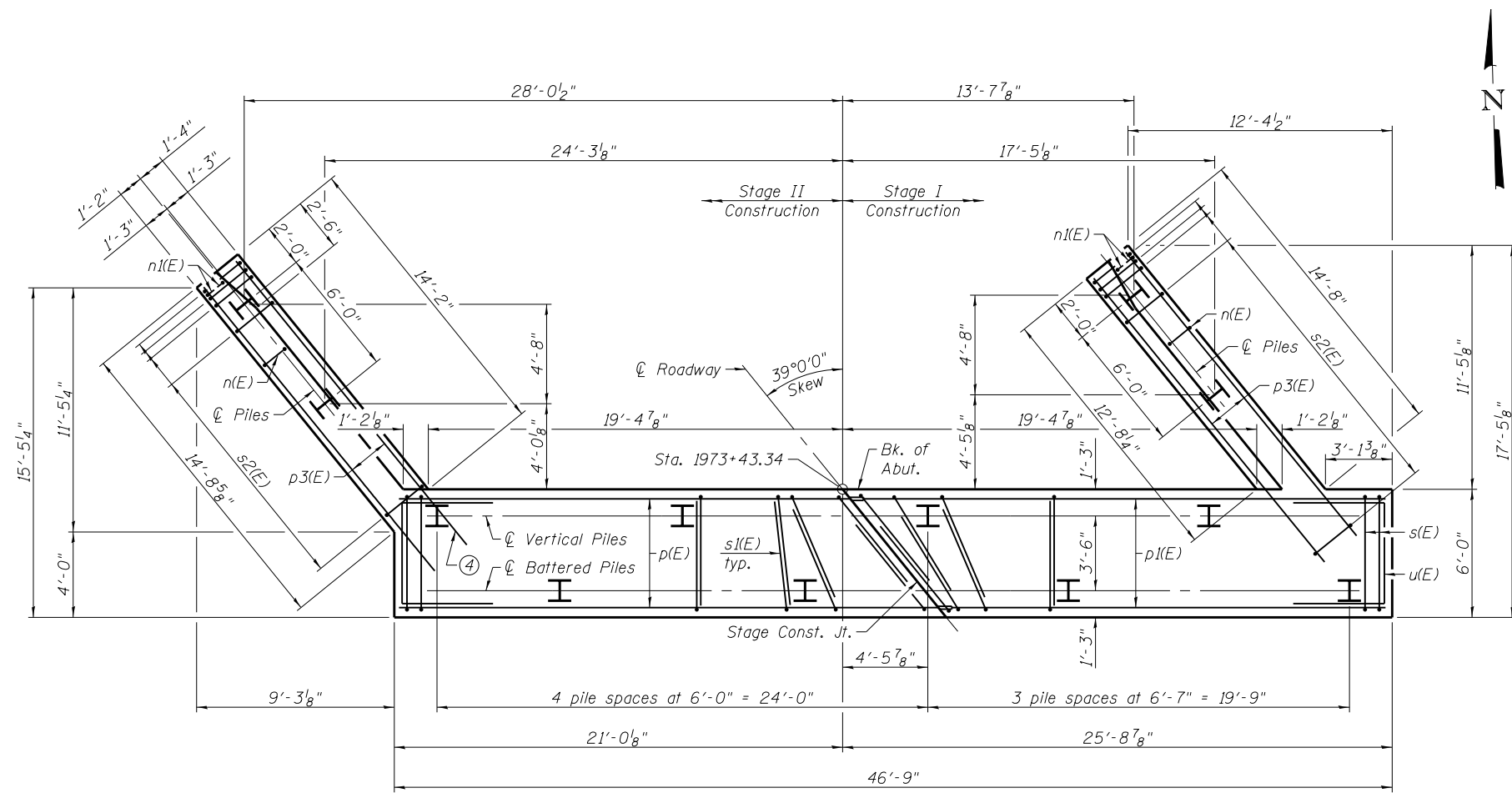
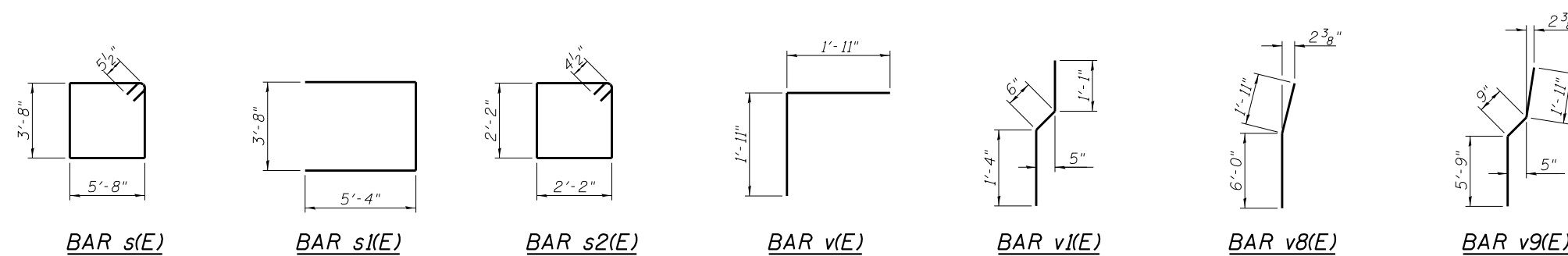
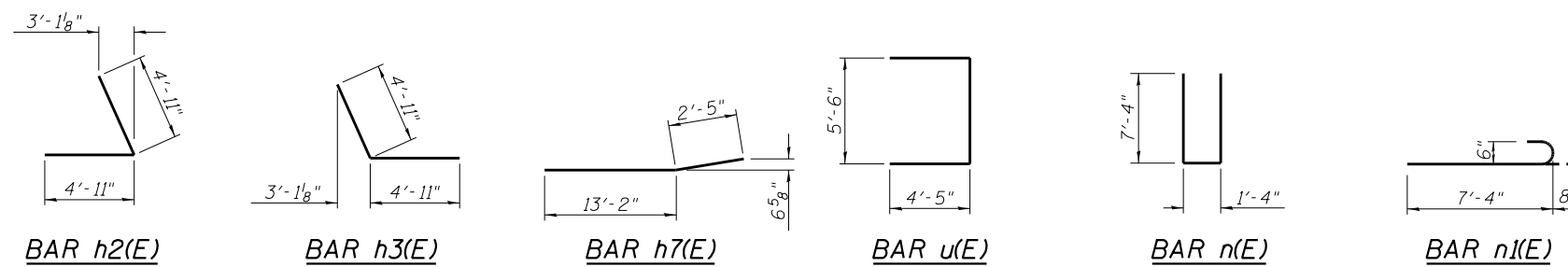


**NORTH ABUTMENT  
BILL OF MATERIAL**

Bar	No.	Size	Length	Shape
h(E)	20	#5	20'-3"	—
h1(E)	10	#6	22'-3"	—
h2(E)	14	#5	9'-10"	L
h3(E)	14	#5	9'-10"	J
h7(E)	18	#4	15'-7"	—
h8(E)	13	#4	16'-6"	—
h9(E)	13	#4	14'-9"	—
n(E)	27	#6	16'-0"	—
n1(E)	12	#6	8'-0"	—
p(E)	10	#7	46'-3"	—
p1(E)	10	#7	45'-11"	—
p3(E)	12	#7	17'-4"	—
s(E)	38	#5	19'-7"	□
s1(E)	58	#5	14'-4"	—
s2(E)	40	#4	9'-5"	□
u(E)	8	#6	14'-4"	—
v(E)	42	#5	3'-10"	Γ
v1(E)	42	#4	2'-11"	—
v7(E)	34	#6	7'-11"	—
v8(E)	6	#6	7'-11"	—
v9(E)	28	#6	8'-5"	—
v10(E)	42	#5	6'-3"	—
v11(E)	42	#5	7'-10"	—
Structure Excavation		Cu. Yd.	248	
Concrete Structures		Cu. Yd.	75.6	
Concrete Encasement		Cu. Yd.	4.2	
Reinforcement Bars, Epoxy Coated		Pound	8,370	
Furnishing Steel Piles HP12x53		Foot	396	
Driving Piles		Foot	396	
Test Pile Steel HP12x53		Each	1	
Concrete Sealer		Sq. Ft.	509	

**PILE DATA**

Type: Steel HP12x53  
 Nominal Required Bearing: 419 kips  
 Factored Resistance Available: 230 kips  
 Est. Length: 36 ft  
 No. Production Piles: 11  
 No. Test Piles: 1



**FIELD CUTTING DIAGRAM**

Order p(E) and p1(E) bars full length. ② ③

- Notes:
- ① For details of piles and Concrete Encasement, see sheet 50 of 62.
  - ② Cut as shown and place bars in top and bottom faces of abutment cap.
  - ③ Cut as shown and place bars in side faces of abutment cap.
  - ④ Bend p2(E) bars as required to miss pile.

**PLAN-PILE CAP**



USER NAME =	DESIGNED - JAD	REVISED
PLOT SCALE =	CHECKED - SUN	REVISED
PLOT DATE =	DRAWN - MAG	REVISED
	CHECKED - JAD	REVISED

**STATE OF ILLINOIS  
DEPARTMENT OF TRANSPORTATION**

**NORTH ABUTMENT DETAILS  
STRUCTURE NO. 048-0100**

F.A.P. RTE.	SECTION	COUNTY	TOTAL SHEETS	SHEET NO.
626	(44-B-1)BR	KNOX	122	71
CONTRACT NO. 68759				

ILLINOIS FED. AID PROJECT