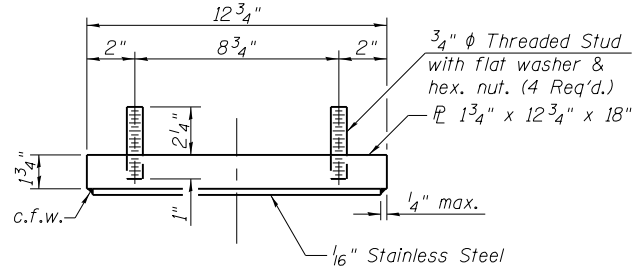
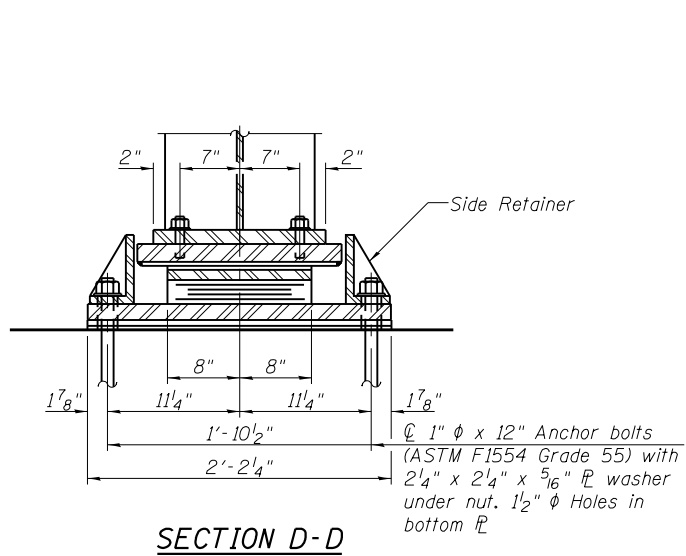


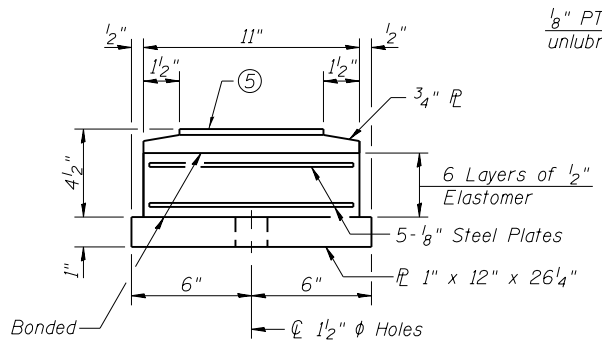
ELEVATION



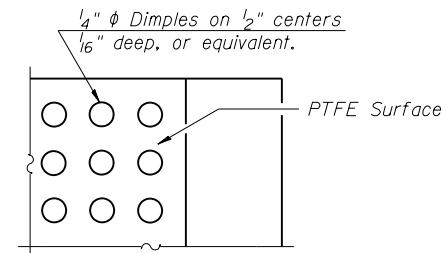
TOP BEARING ASSEMBLY



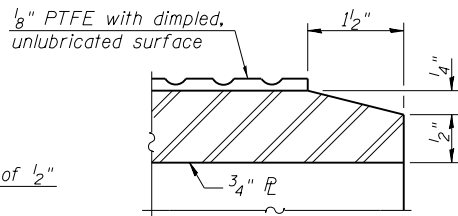
SECTION D-D



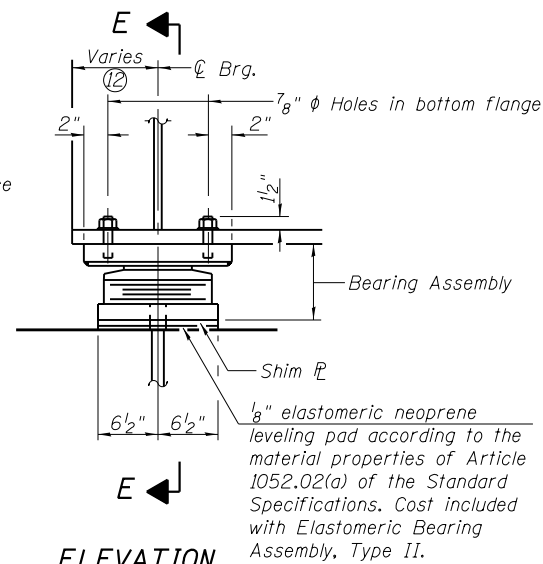
BOTTOM BEARING ASSEMBLY



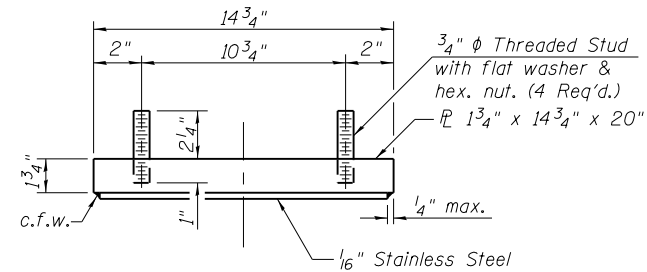
PLAN-PTFE SURFACE



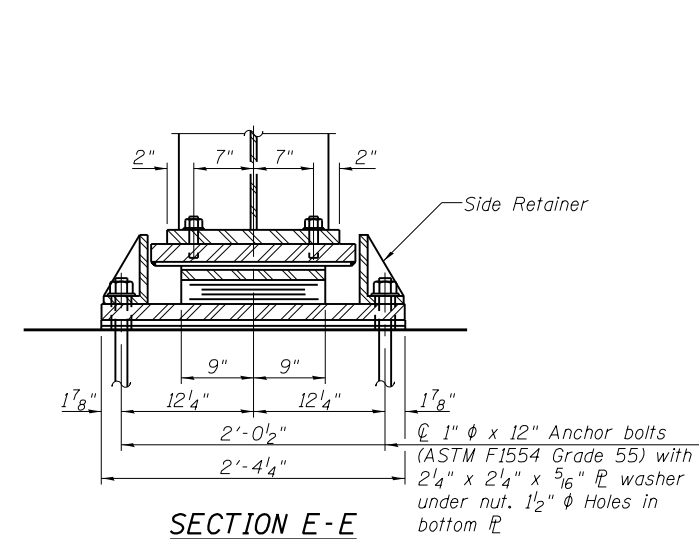
SECTION THRU PTFE



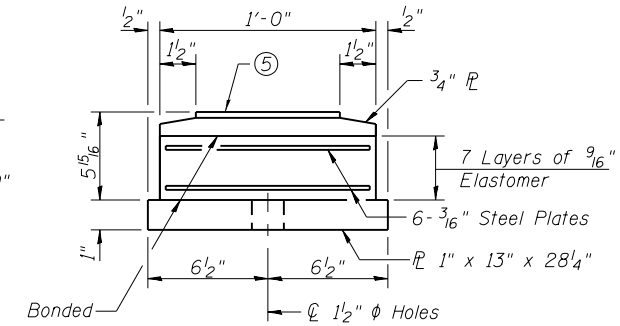
ELEVATION



TOP BEARING ASSEMBLY



SECTION E-E



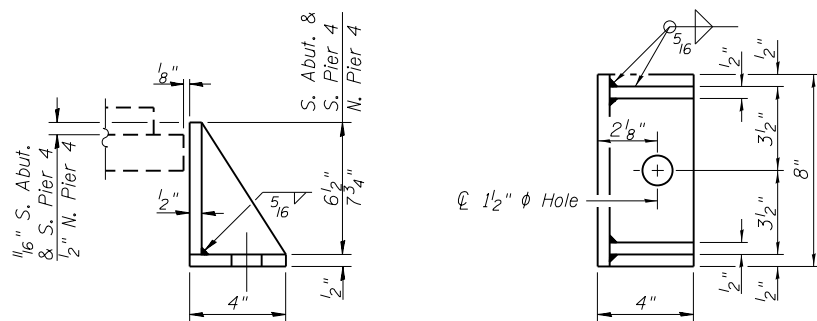
BOTTOM BEARING ASSEMBLY

TYPE II ELASTOMERIC EXP. BRG.

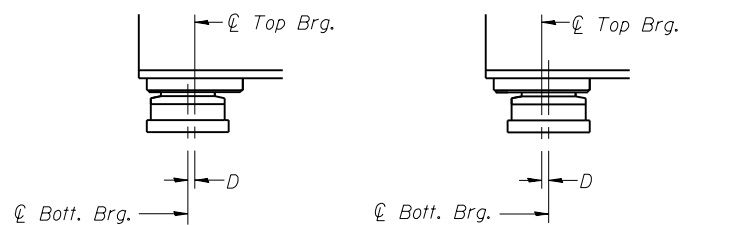
(South Abutment and South Brg. Pier 4)

TYPE II ELASTOMERIC EXP. BRG.

(North Brg. Pier 4)



SIDE RETAINER ⑪



BELOW 50°F. (Move bott. brg. away from fixed brg.)
ABOVE 50°F. (Move bott. brg. toward fixed brg.)

SETTING ANCHOR BOLTS AT EXP. BRG.

D = 1/8" per each 100' of expansion for every 15° temp. change from the normal temp. of 50°F.

BEARING SHIM PLATES

	Girder 1	Girder 2	Girder 3	Girder 4	Girder 5	Girder 6
S. Abut.	-	-	7/8"	5/8"	-	-
S. Pier 4	-	-	-	1/8"	-	-
N. Pier 4	-	-	-	-	-	-

BILL OF MATERIAL

Item	Unit	Total
Elastomeric Bearing Assembly, Type II	Each	18
Anchor Bolts, 1"	Each	36

Notes:

- Anchor bolts shall be ASTM F1554 all-thread or an Engineer approved alternate material of the grade and diameter specified. The corresponding specified grade of AASHTO M314 anchor bolts may be used in lieu of ASTM F1554.
- Anchor bolts for Type II bearings shall be placed in holes drilled in the concrete through holes in the bottom bearing plate after members are in place. Side retainers shall be placed after bolts are installed.
- Drilled and set anchor bolts shall be installed according to Article 521.06 of the Standard Specifications.
- Side retainers and other steel members required for the elastomeric bearing assembly shall be included in the cost of Elastomeric Bearing Assembly, Type II.
- 1/8" PTFE dimpled, unlubricated.
- The 1/8" PTFE sheet shall be bonded directly to the top steel plate with a two-component, medium viscosity epoxy resin, conforming to the requirements of the Federal Specification MMM-A-134, Type I. The bond agent shall be applied on the full area of the contact surfaces.
- The structural steel plates of the Bearing Assemblies below expansion joints shall conform to the requirements of AASHTO M 270 Grade 50.
- Bonding of 1/8" PTFE sheet during vulcanizing process will be permitted provided the process and method of adjusting assembly height is approved by the Engineer.
- For bearings below expansion joints, all bearing plates, shim plates, and side retainers shall be metallized according to the Special Provision for Metallizing Structural Steel. At the Contractor's option, in lieu of metallizing, the bearing plates, shim plates, and side retainers may be galvanized according to the Special Provision for Hot Dip Galvanizing for Structural Steel.
- Two 1/8 in. adjusting shims shall be provided for each bearing in addition to all other plates or shims and placed as shown on bearing details. For bearings below expansion joints, these plates shall be metallized according to the Special Provision for Metallizing Structural Steel. If the galvanizing option is chosen for the bearings, in lieu of metallizing, these shims shall be galvanized according to the Special Provision for Hot Dip Galvanizing for Structural Steel.
- Equivalent rolled angle with stiffeners will be allowed in lieu of welded plates.
- See Girder End Treatment Detail on sheet 30 of 62.



15400 E. Eastman Blvd. Suite 100
Lansdale, PA 19384
Tel: 610.345.2200
Fax: 610.345.2201
www.oatesassociates.com

USER NAME =	DESIGNED - SJN	REVISED
	CHECKED - JAD	REVISED
PLOT SCALE =	DRAWN - JAD	REVISED
PLOT DATE =	CHECKED - SJN	REVISED

STATE OF ILLINOIS
DEPARTMENT OF TRANSPORTATION

BEARING DETAILS
STRUCTURE NO. 048-0100

SHEET NO. 36 OF 62 SHEETS

F.A.P. RTE.	SECTION	COUNTY	TOTAL SHEETS	SHEET NO.
626	(44-B-1)BR	KNOX	122	66
CONTRACT NO. 68759				
ILLINOIS FED. AID PROJECT				