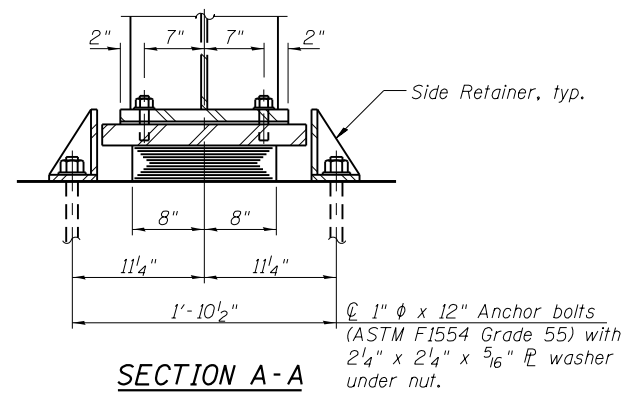
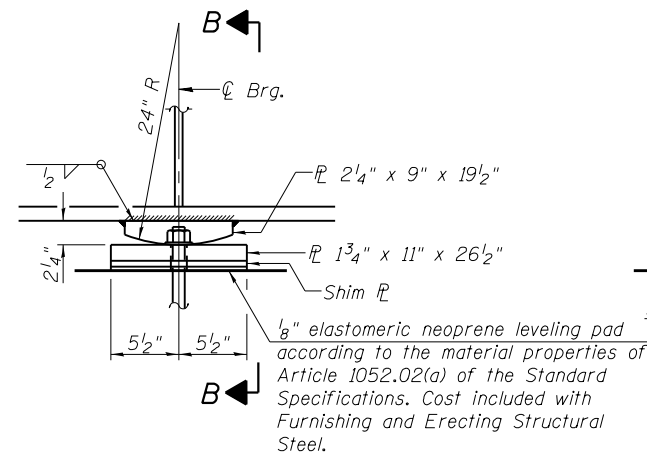


ELEVATION

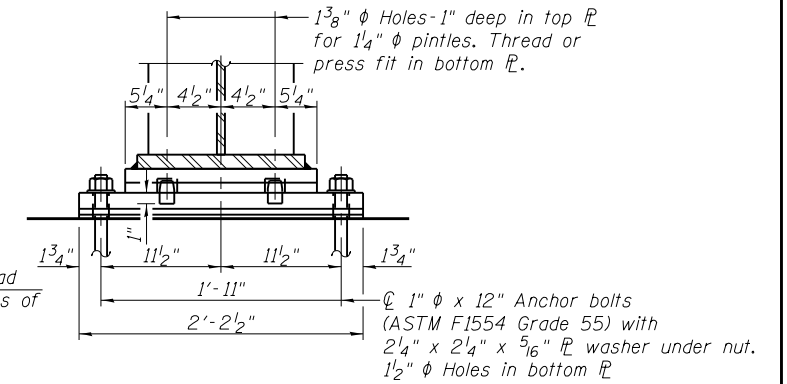


SECTION A-A

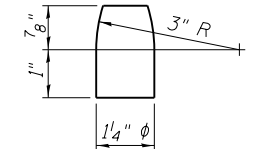


ELEVATION

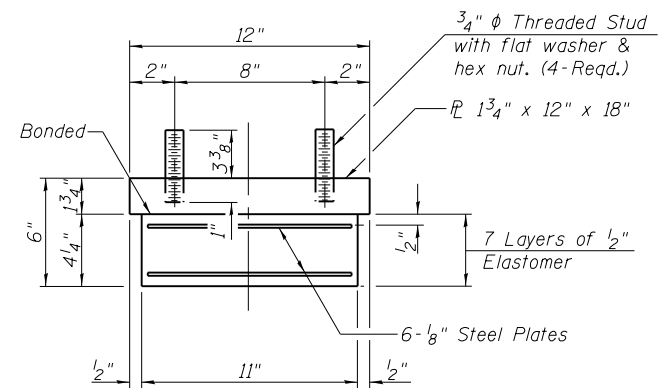
FIXED BEARING
(Piers 1, 2, and 3)



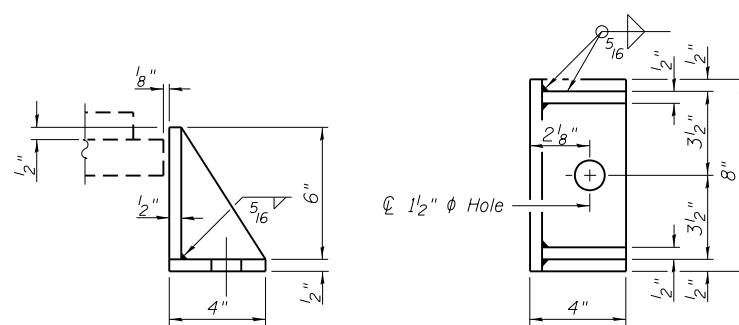
SECTION B-B



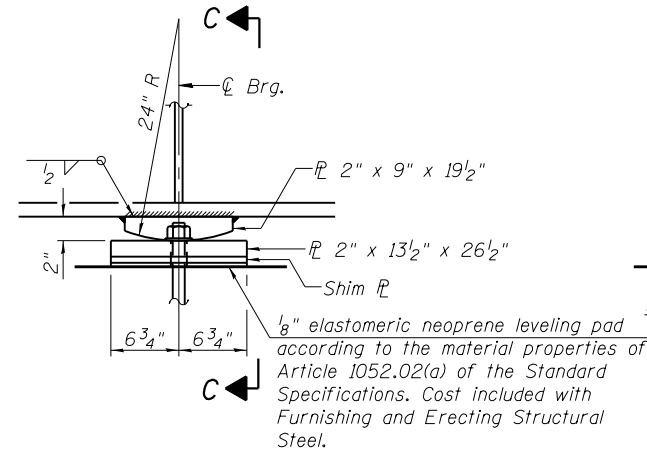
PINTLE



BEARING ASSEMBLY

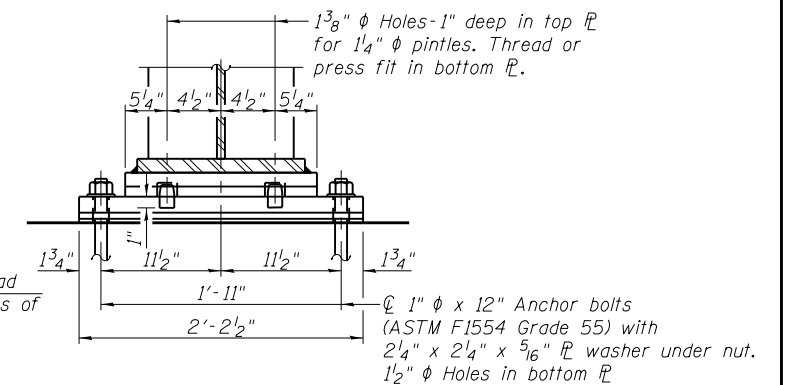


SIDE RETAINER (9)



ELEVATION

FIXED BEARING
(Pier 6)



SECTION C-C

TYPE I ELASTOMERIC EXP. BRG.
(North Abutment)

BEARING SHIM PLATES

	Girder 1	Girder 2	Girder 3	Girder 4	Girder 5	Girder 6
Pier 1	-	-	3/4"	3/8"	-	-
Pier 2	-	-	7/8"	5/8"	-	-
Pier 3	-	-	1/4"	-	-	-
Pier 6	-	-	1/2"	3/4"	-	-
N. Abut.	-	-	5/8"	7/8"	-	-

BILL OF MATERIAL

Item	Unit	Total
Elastomeric Bearing Assembly, Type I	Each	6
Anchor Bolts, 1"	Each	60

Notes:

- Anchor bolts shall be ASTM F1554 all-thread or an Engineer approved alternate material of the grade and diameter specified. The corresponding specified grade of AASHTO M314 anchor bolts may be used in lieu of ASTM F1554.
- Anchor bolts at fixed bearings may be either cast in place or installed in holes drilled after the supported member is in place.
- Anchor bolts for side retainers may be cast in place or installed in holes drilled before or after members are in place.
- Drilled and set anchor bolts shall be installed according to Article 521.06 of the Standard Specifications.
- Side retainers and other steel members required for the elastomeric bearing assembly shall be included in the cost of Elastomeric Bearing Assembly, Type I.
- The structural steel plates of the Bearing Assembly shall conform to the requirements of AASHTO M 270 Grade 50W except bearings below expansion joints which shall conform to the requirements of AASHTO M 270 Grade 50.
- For bearings below expansion joints, all bearing plates, shim plates, and side retainers shall be metallized according to the Special Provision for Metallizing Structural Steel. At the Contractor's option, in lieu of metallizing, the bearing plates, shim plates, and side retainers may be galvanized according to the Special Provision for Hot Dip Galvanizing for Structural Steel.
- Two 1/8 in. adjusting shims shall be provided for each bearing in addition to all other plates or shims and placed as shown on bearing details. For bearings below expansion joints, these plates shall be metallized according to the Special Provision for Metallizing Structural Steel. If the galvanizing option is chosen for the bearings, in lieu of metallizing, these shims shall be galvanized according to the Special Provision for Hot Dip Galvanizing for Structural Steel.
- Equivalent rolled angle with stiffeners will be allowed in lieu of welded plates.