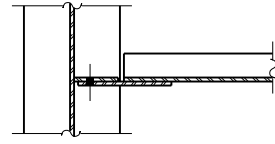
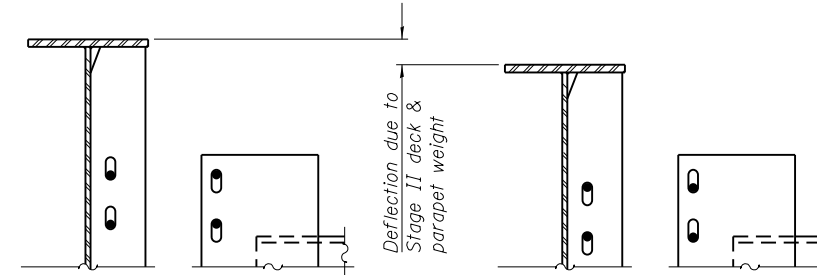


SECTION B-B



SECTION C-C

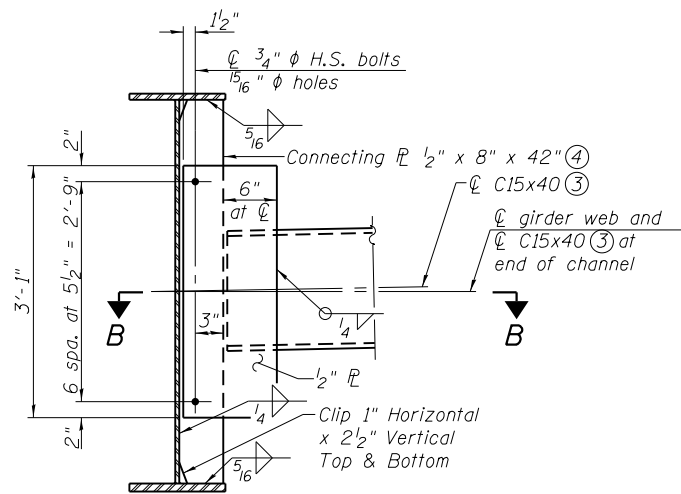


PRIOR TO STAGE II DECK POUR
(Steel weight only)

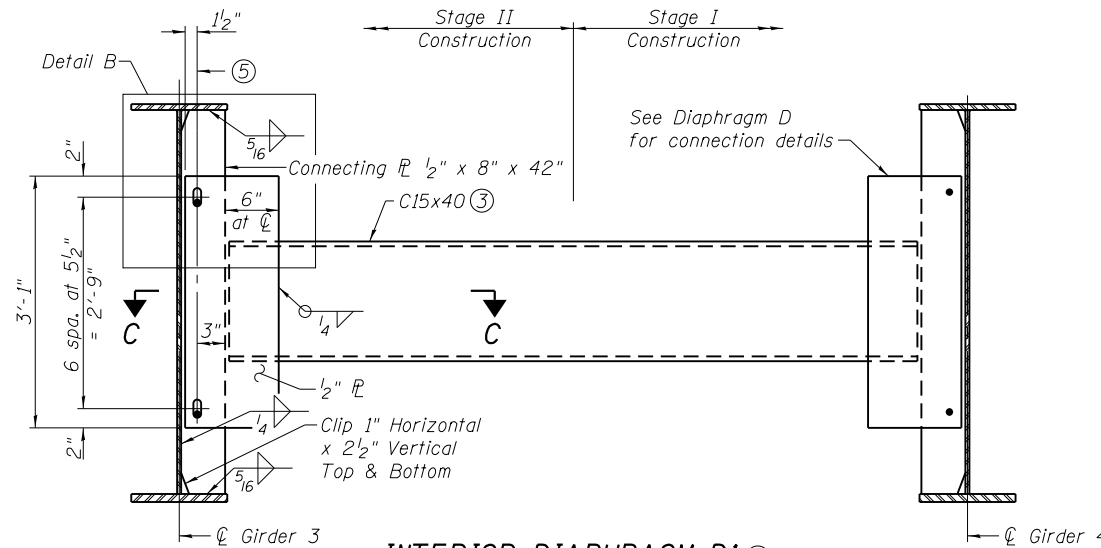
AFTER STAGE II DECK POUR
(Including parapet weight)

DETAIL B

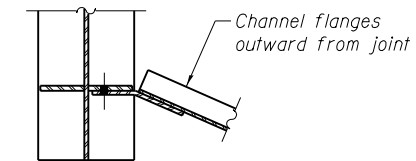
● Denotes bolt location
○ Denotes slotted hole



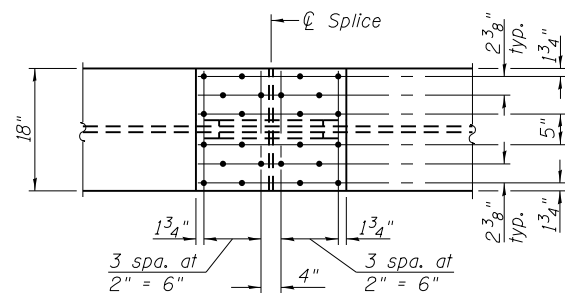
INTERIOR DIAPHRAGM D
(108 Required)



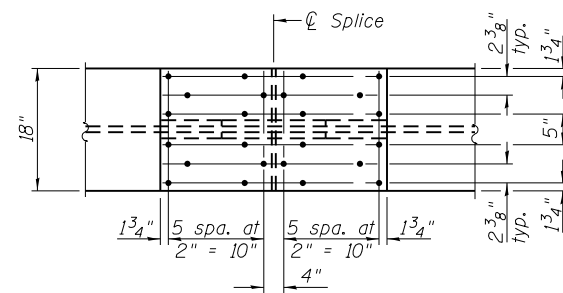
INTERIOR DIAPHRAGM D1 (27 Required)



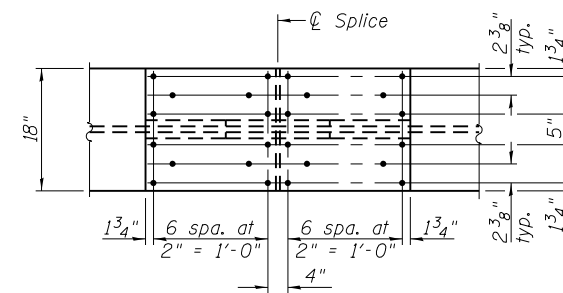
SECTION D-D



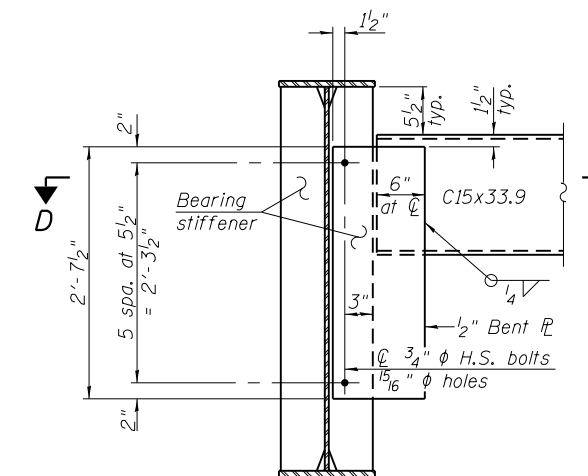
TOP & BOTTOM PLAN



TOP & BOTTOM PLAN



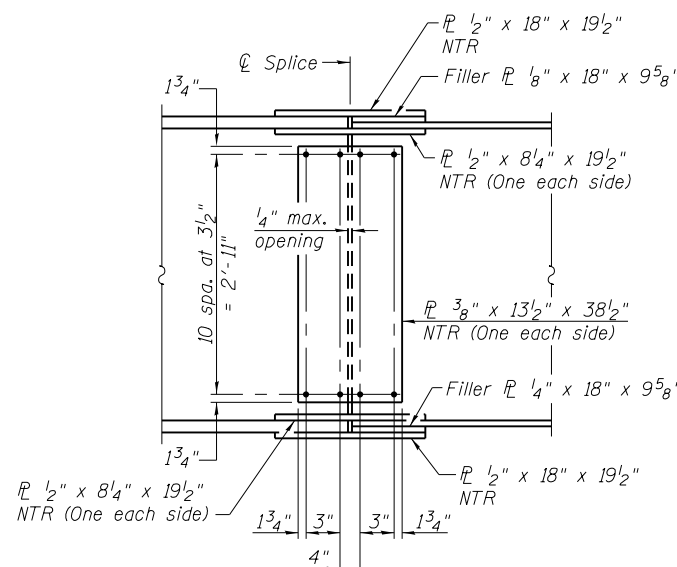
TOP & BOTTOM PLAN



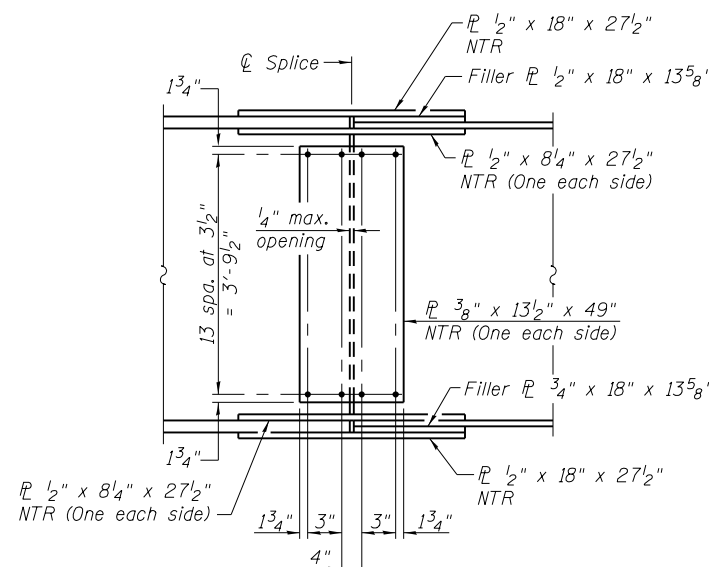
END DIAPHRAGM D2
(4 Required)
(Galvanized)

Notes:

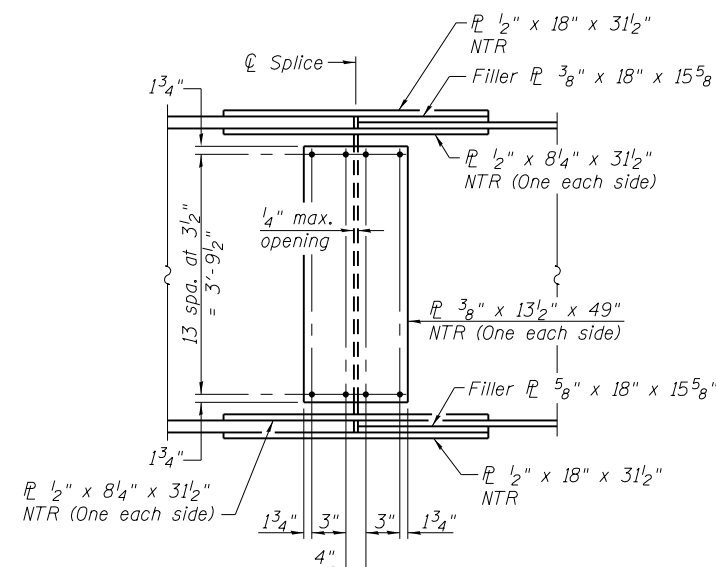
- Load carrying components designated "NTR" shall conform to the Impact Testing Requirement, Zone 2.
- Two hardened washers required for each set of oversized holes.
- Alternate channels C15x50 are permitted to facilitate material acquisition. Calculated weight of structural steel is based on C15x40 sections. The alternate, if utilized, shall be provided at no extra cost to the department.
- Do not provide plate on exterior face of fascia girders.
- Use 3/4 inch diameter high-strength bolts. Provide 1 3/8 inch x 1 7/8 inch vertical slotted holes in connection plate attached to channel diaphragms and girder. Two 3/16 inch structural plate washers required for each set of slotted holes.
- The fabricator shall detail connection plate locations on channel to allow for differential deflection during Stage II deck and parapet pour. The bolts shall be finger tight until the Stage II deck and parapet concrete is poured, allowing the Stage II girders to deflect vertically without stressing the DI diaphragms or Stage I girders. The bolts shall be fully tightened after the Stage II deck and parapet concrete is poured. The diaphragm connection shall be detailed so that the centerline of girder web and centerline of diaphragm channel align in their final position.



SPLICE 1, 2, & 3 DETAIL
(18 Required)



SPLICE 4 & 7 DETAIL
(12 Required)



SPLICE 5 & 6 DETAIL
(12 Required)



OATES ASSOCIATES
Engineering + Architecture
100 Lamar Court, Suite 1
Chicago, IL 60654
Tel: 312.345.2200
Fax: 312.345.2201
www.oatesassociates.com

USER NAME =	DESIGNED - SJN	REVISOR
PLOT SCALE =	CHECKED - JAD	REVISOR
PLOT DATE =	DRAWN - SJN	REVISOR
	CHECKED - JAD	REVISOR

STATE OF ILLINOIS
DEPARTMENT OF TRANSPORTATION

GIRDER DETAILS
STRUCTURE NO. 048-0100

SHEET NO. 31 OF 62 SHEETS

F.A.P. RTE.	SECTION	COUNTY	TOTAL SHEETS	SHEET NO.
626	(44-B-1)BR	KNOX	122	61
CONTRACT NO. 68759				

ILLINOIS FED. AID PROJECT