

Joint Size	"C" at 50°F	"D" at 50°F
2"	2"	1 1/2" Min.
2 1/2"	2 1/2"	1 3/4" Min.
4"	3"	2 1/2" Min.

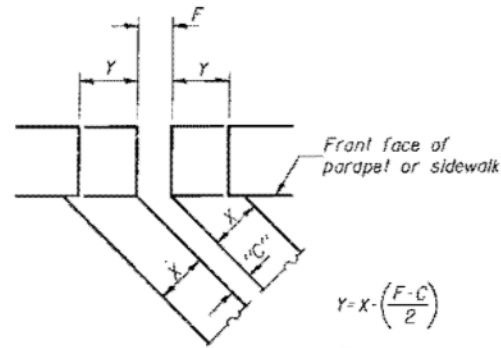
**INSTALLATION NOTES**

1. Install sponge mandrels into positions shown to form flap convolution.
2. Install parapet or sidewalk piece (trim roadway flap to fit before applying epoxy).
3. Install continuous seal in roadway.
4. Install anchor blocks as indicated.

NOTE A: Maximum spacing of anchor bolts shall be 12" centers.

**SKEW LIMITATIONS**

The details of the anchor blocks and the elastomeric membrane in the parapet, as shown, are for up to 50° skews. For skews greater than 50°, the anchor blocks and the elastomeric membrane, installed in accordance with dimension "D", might require modifications to insure a minimum clearance of 1/2" from centerline of anchor studs to edge of parapet opening. The anchor blocks and the elastomeric membrane shall also be installed to the top of the parapet with the anchor studs spaced at 12" cts.

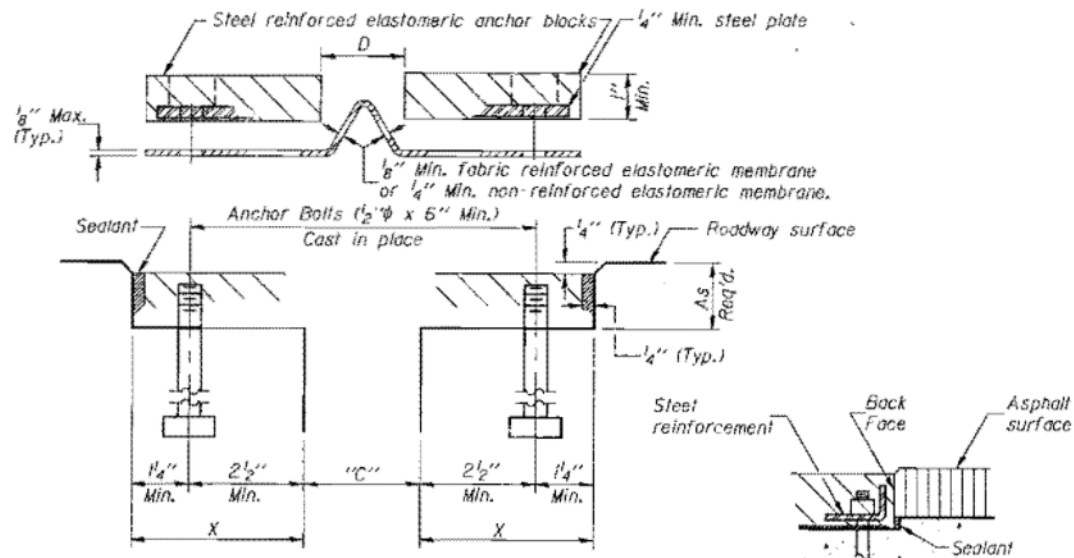


**FORMING BLOCKOUT SKETCH**

$$Y = X \cdot \left( \frac{F - C}{2} \right)$$

For dimension "F" see sheet # 7 of 15.

**DEPARTMENT OF TRANSPORTATION**

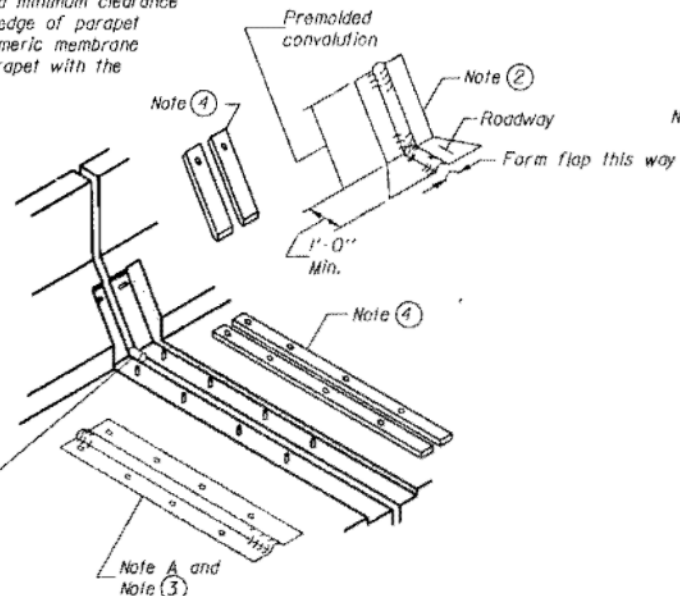


**CROSS SECTION**

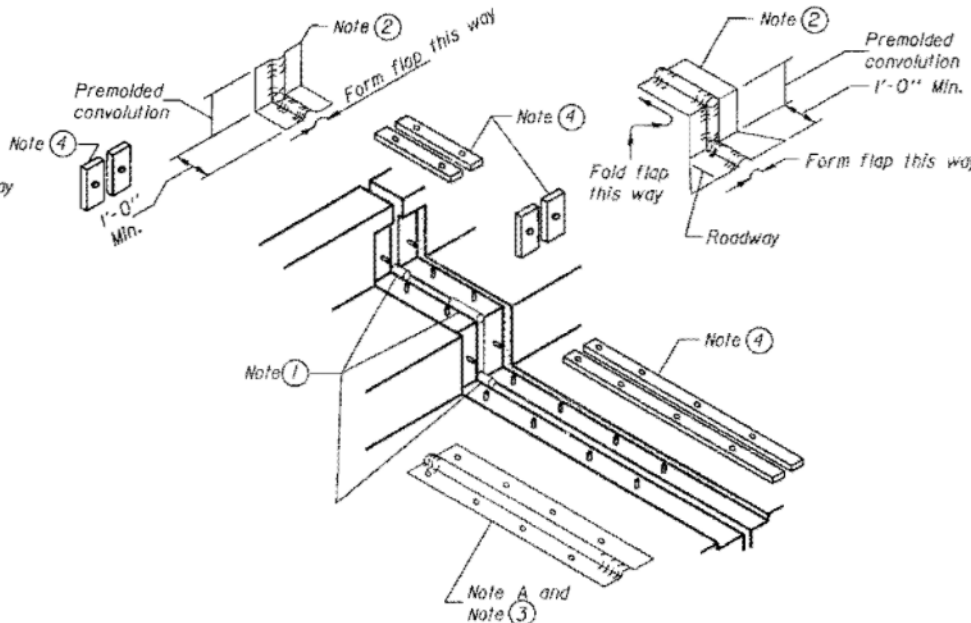
**ANCHOR BLOCK REINFORCEMENT WITH ASPHALT SURFACE**

**GENERAL NOTES**

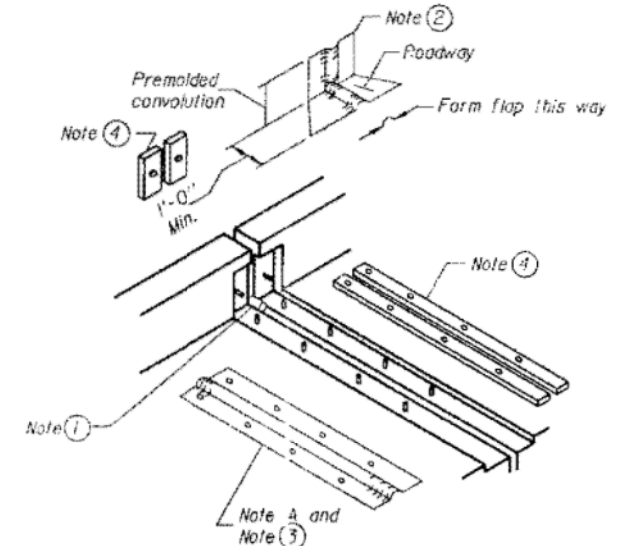
Continuous Seal Neoprene Expansion Joint shall consist of mold, anchor blocks of elastomer and steel, field assembled over continuous lengths of elastomeric membrane. See Special Provisions.  
 The elastomeric membrane shall be premolded with a single or a double upward convolution that will have a "memory" to return to its molded position upon joint closure.  
 The steel reinforcement must extend up the back face of anchor blocks when asphalt surfaces are used but is optional in concrete blockout.  
 The convolution length shall be such that the extended length will not be greater than the manufactured length when the joint is fully expanded in its design range and will not protrude above the anchor blocks when the joint is fully compressed.  
 Joint openings shall be adjusted in accordance with Article 503.07(c) of the Standard Specifications when the deck is poured at an ambient temperature other than 50° F.  
 The parapet and sidewalk flaps may be furnished factory vulcanized to the roadway membrane provided the centerline of the convolution is maintained and the process and method meet the approval of the Engineer.  
 Anchor bolts, washers and nuts, to be placed against corrosion in accordance with the special provisions, shall be zinc-coated by the mechanical plating method conforming to ASTM B65 class 50. Zinc-coated nuts shall be topped over size in accordance with the requirements of AASHTO M291 and shall meet the supplemental requirements 51.1 thru 51.2.1 of the same specifications for lubricant and testing.



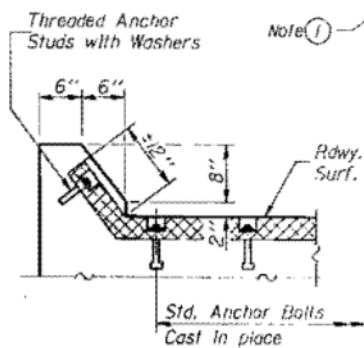
**AT PARAPET**



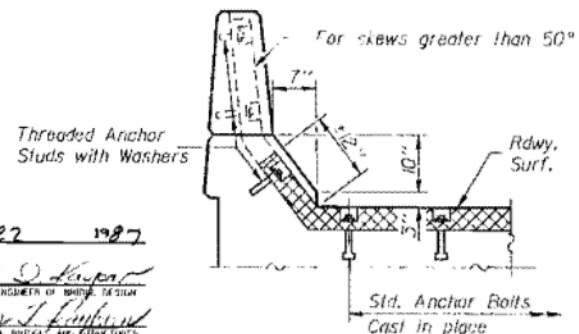
**AT SIDEWALK OR MEDIAN**



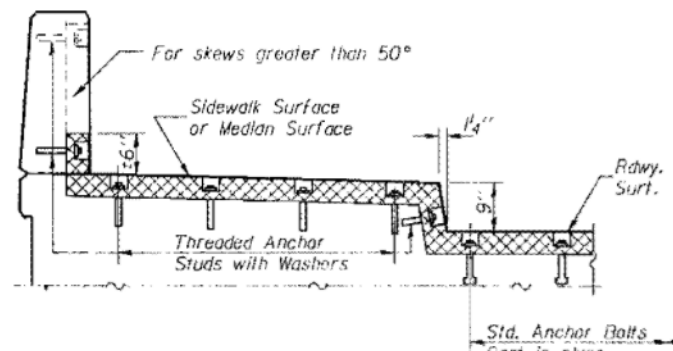
**AT WALL**



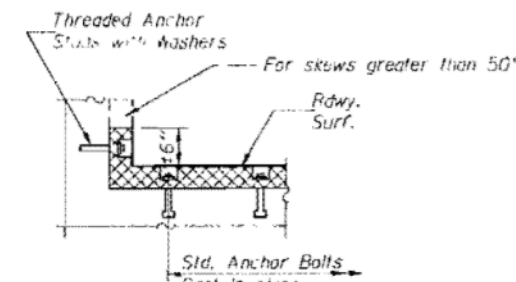
**AT CURB**



**AT PARAPET**



**AT SIDEWALK OR MEDIAN TYPICAL END TREATMENTS**



**AT WALL**

**FOR INFORMATION ONLY**

CONTINUOUS SEAL TYPE NEOPRENE EXPANSION JOINTS For 2", 2 1/2" and 4" Movement

FA ROUTE 100 SECTION 10 GRUNDY COUNTY STATION 136 + 58.25

DESIGNED VECTOR VELTZ  
 CHECKED Eric Blawie  
 DRAWN RITA WILLIAMS  
 CHECKED V.V. EEG pmp  
 E.J.-CS 12-1-83

EXAMINED May 22 1987  
 PASSED  
 APPROVED