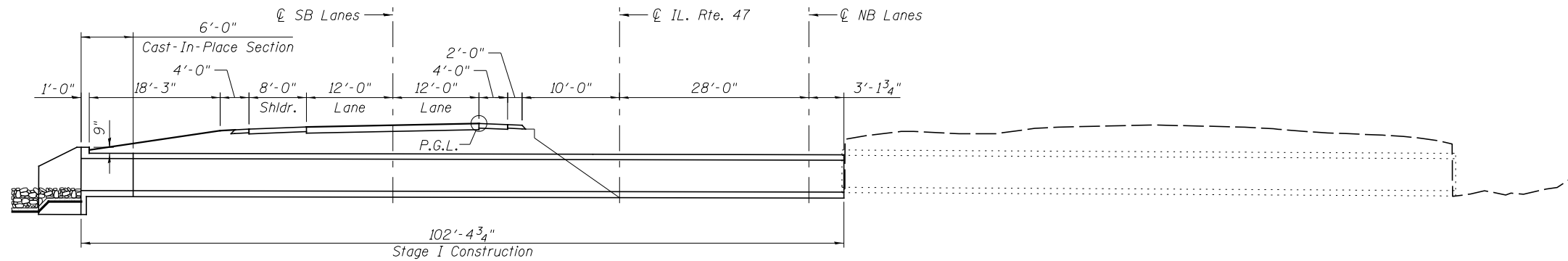
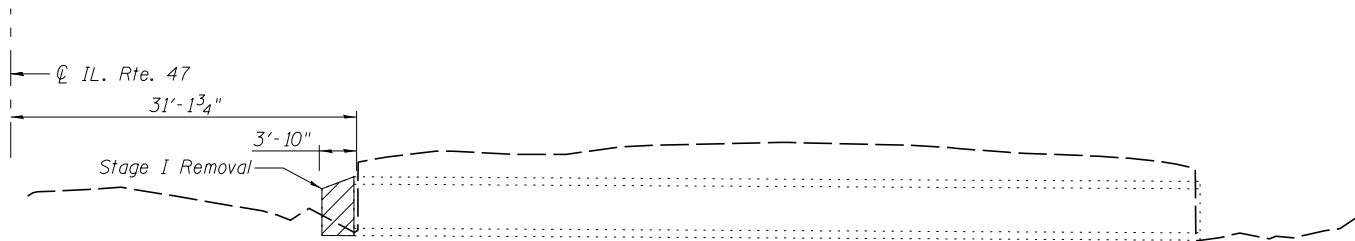
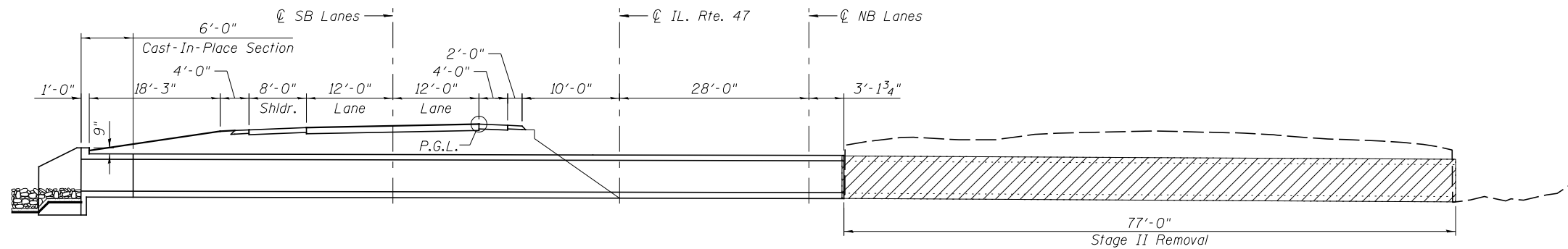


STAGE I REMOVAL
(Looking North)

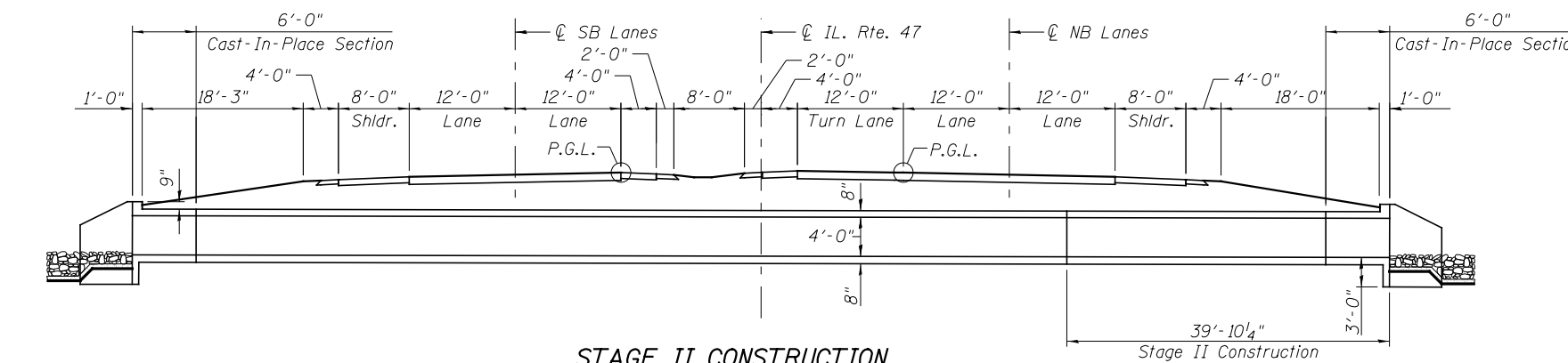


STAGE I CONSTRUCTION
(Looking North)

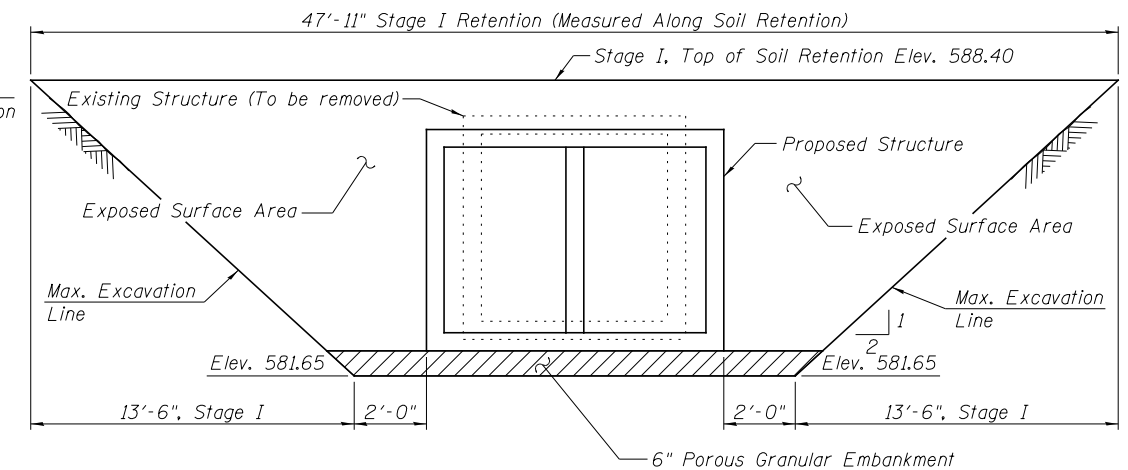


STAGE II REMOVAL
(Looking North)

A cantilevered sheet piling design does not appear feasible and additional members or other retention systems may be necessary. The Contractor shall submit a temporary soil retention system design including plan details and calculations for review and acceptance by the Engineer.
Slopes shown are parallel to CL of Roadway, unless noted otherwise.



STAGE II CONSTRUCTION
(Looking North)



TEMPORARY SOIL RETENTION

REVISED -	USER NAME =	DESIGNED - PSS
REVISED -	FILE NAME =	CHECKED - VPT
REVISED -	PLOT SCALE =	DRAWN - AJF
REVISED -	PLOT DATE =	CHECKED - VPT



STATE OF ILLINOIS
DEPARTMENT OF TRANSPORTATION

GENERAL DATA
STRUCTURE NO. 032-2536

SHEET NO. 2 OF 4 SHEETS

F.A.P. RTE.	SECTION	COUNTY	TOTAL SHEETS	SHEET NO.
326	(110)R, BR & BR-1	GRUNDY	644	390
CONTRACT NO. 66B83				
ILLINOIS FED. AID PROJECT				