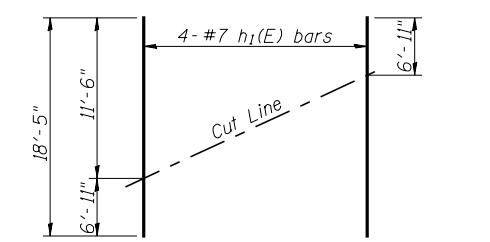
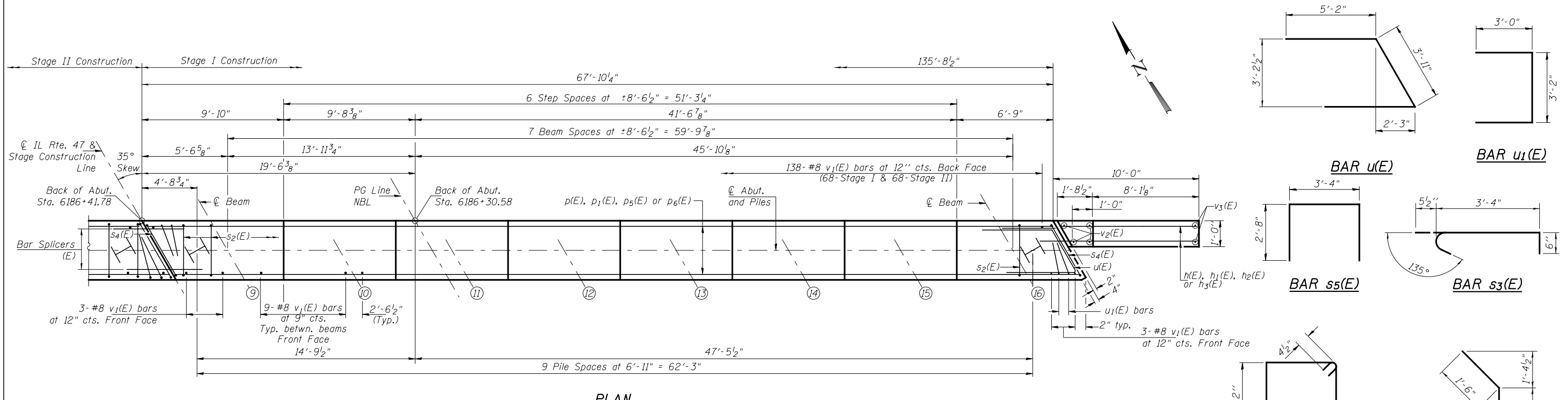


**FIELD CUTTING DIAGRAM**  
Order v<sub>3</sub>(E) and v<sub>5</sub>(E) full length. Cut as shown and use remainder of bars in opposite face.



**FIELD CUTTING DIAGRAM**  
Order h<sub>1</sub>(E) full length. Cut as shown and use remainder of bars in opposite face.



**Notes:**  
Four steps monolithically with cap.  
See sheet 23 of 30 for Pile Details.  
See sheet 24 of 30 for Bar Splicer Details.  
See sheet 21 of 30 for Pile Data.  
See sheet 21 of 30 for Bill of Materials  
See sheet 21 of 30 for Section Thru Abutment.

V:\3195\Structure\032-0123\0320123-66883-02-NORTH ABUT 2.dgn	USER NAME = bdecrane	DESIGNED - NPH	<b>Hutchison Engineering, Inc.</b> JACKSONVILLE-SHOREWOOD-PEORIA	<b>STATE OF ILLINOIS</b> <b>DEPARTMENT OF TRANSPORTATION</b>	<b>NORTH ABUTMENT</b> <b>STRUCTURE NO. 032-0123</b>	F.A.P. RTE.	SECTION	COUNTY	TOTAL SHEETS	SHEET NO.
	PLOT SCALE = NONE	DRAWN - RMD				326	110BR-1	GRUNDY	644	380
PLOT DATE = 8/6/2013	CHECKED - JOH/NPH					CONTRACT NO. 66B83				
						ILLINOIS FED. AID PROJECT				