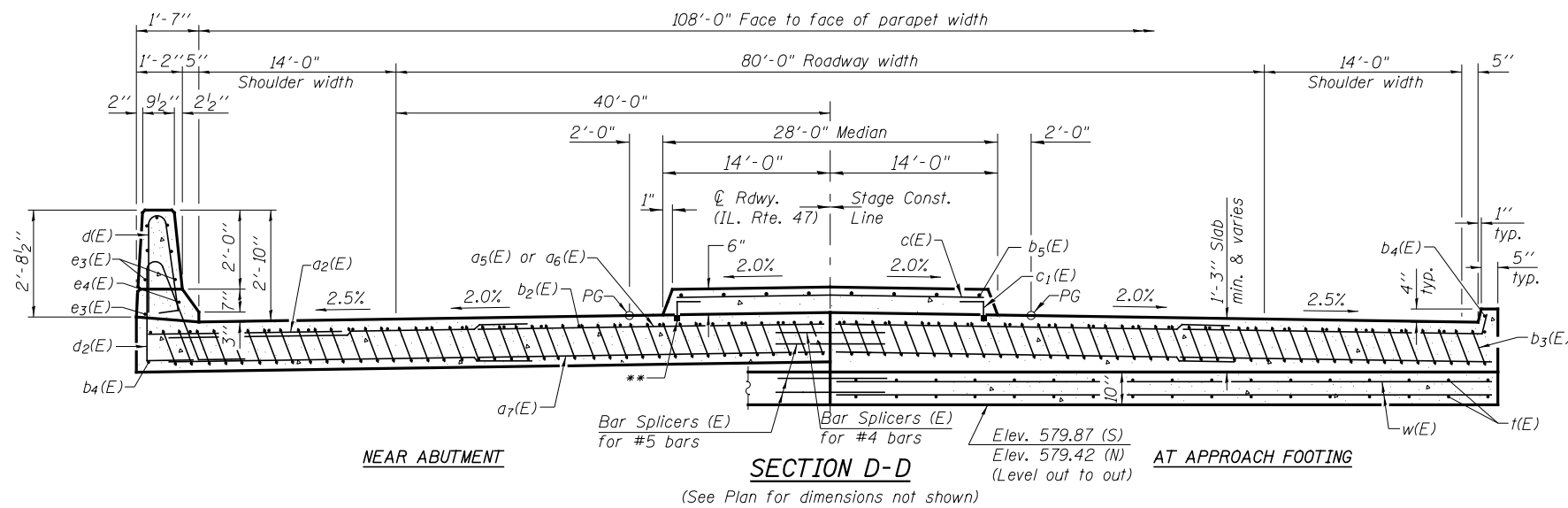


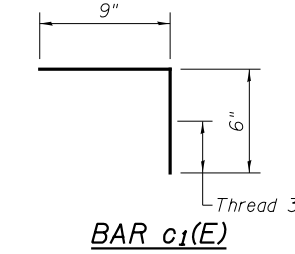
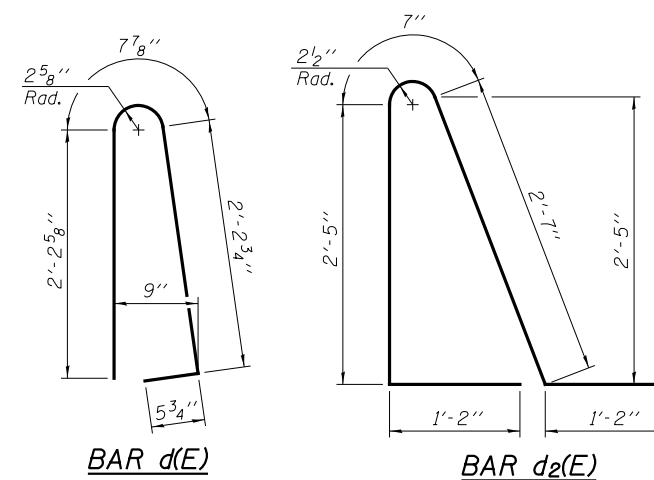
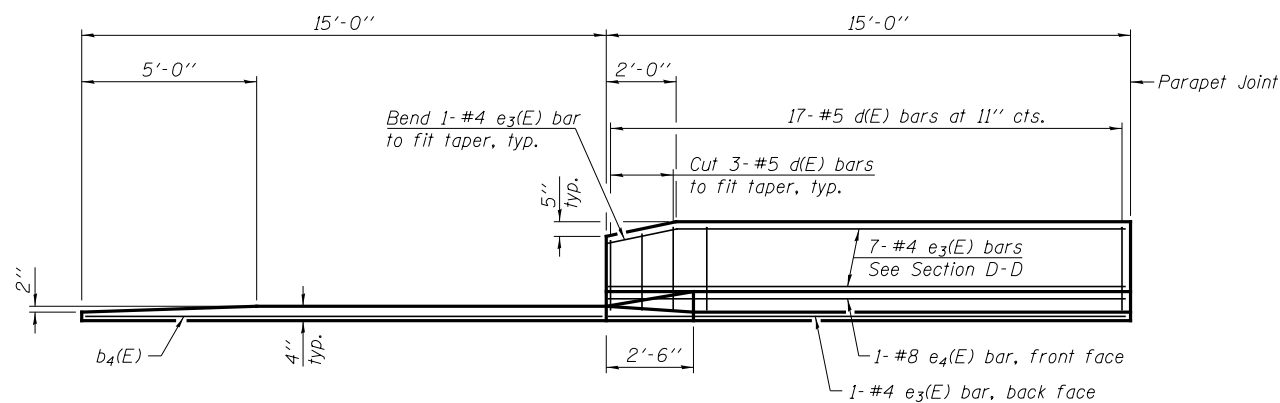
Notes:
 See sheet 14 of 30 for Detail A, Detail B, View B-B & View F-F.
 Approach slab, parapet, and median concrete shall be paid for as Concrete Superstructure.
 Approach footing concrete shall be paid for as Concrete Structures.
 Reinforcement shall be paid for as Reinforcement Bars, Epoxy Coated.
 See sheet 12 of 30 for v(E) bar details.
 The approach footing maximum applied service bearing pressure (Qmax) = 2.0 ksf.
 See sheet 24 of 30 for Bar Splicer Details.
 Cost of excavation for approach footing included with Concrete Structures.
 See sheet 2 of 30 for Granular Backfill and drainage treatment details.
 See sheet 12 of 30 for additional parapet details.
 Median is to be poured after Stage II construction has been completed.



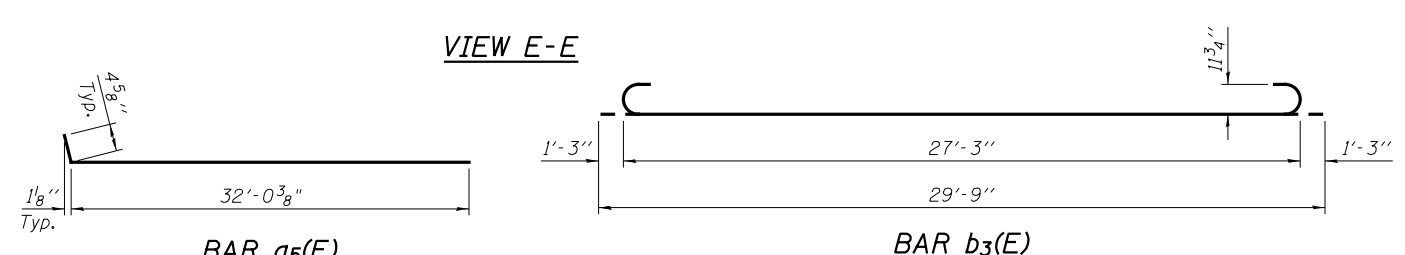
* Tilt #9 b3(E) bars as required to maintain clearance.
 ** 3/4" φ Galvanized expansion anchor or Ferrule Loop Slab Insert (Proof Load 6600 lbs). Cost is included in the cost of Reinforcement Bars, Epoxy Coated.
 *** Cost included with Concrete Superstructure.

**NORTH AND SOUTH APPROACH
 BILL OF MATERIAL**

Bar	No.	Size	Length	Shape
a2(E)	48	#6	6'-6"	—
a5(E)	100	#4	32'-2"	—
a6(E)	100	#4	36'-9"	—
a7(E)	368	#5	35'-0"	—
b2(E)	180	#4	29'-9"	—
b3(E)	528	#9	29'-9"	—
b4(E)	8	#4	14'-9"	—
b5(E)	58	#5	29'-9"	—
c1(E)	124	#5	1'-3"	—
c2(E)	62	#5	33'-8"	—
d(E)	68	#5	5'-7"	—
d2(E)	68	#5	7'-11"	—
e3(E)	32	#4	14'-9"	—
e4(E)	4	#8	14'-9"	—
t(E)	448	#4	11'-11"	—
w(E)	320	#5	35'-0"	—
Concrete Superstructure	CU YD		396.6	
Concrete Structures	CU YD		83.0	
Reinforcement Bars, Epoxy Coated	POUND		96,390	



MIN. BAR LAP
 #4 = 2'-1"
 #5 = 2'-7"



(Sheet 2 of 2)