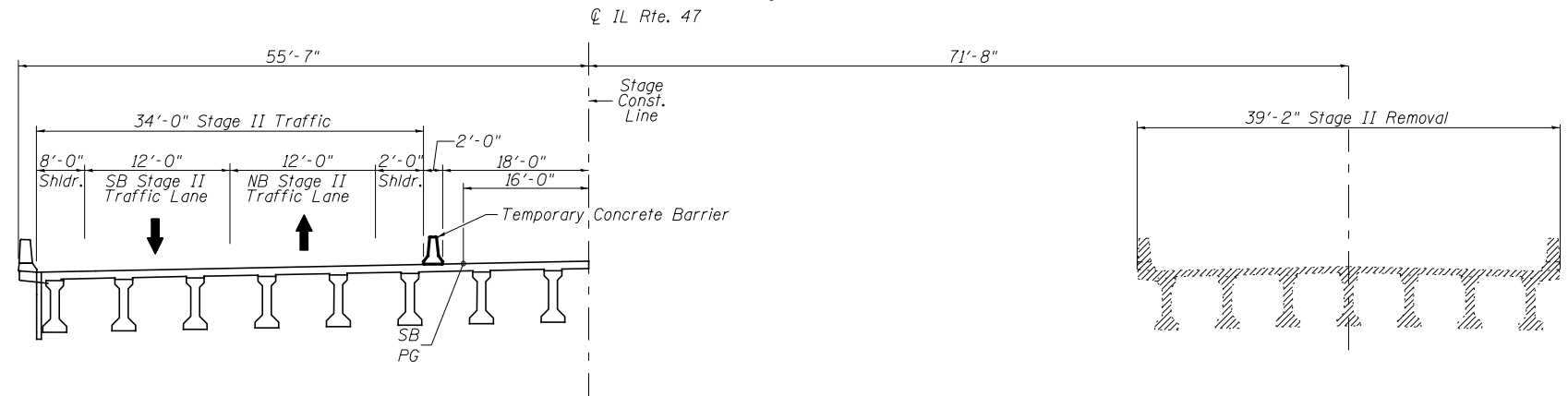


**STAGE I CONSTRUCTION**

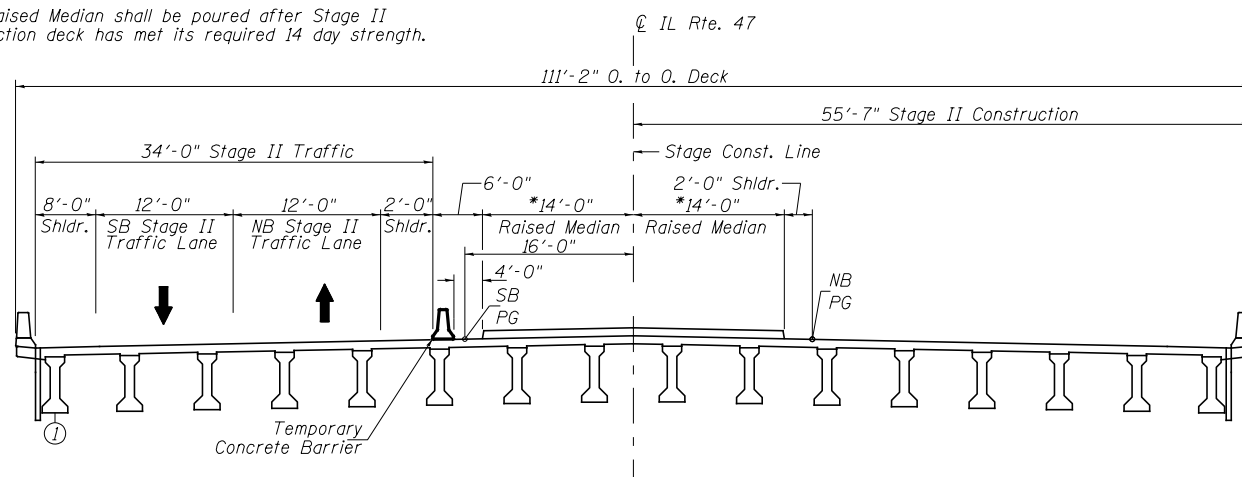
(Looking North)



**STAGE II REMOVAL**

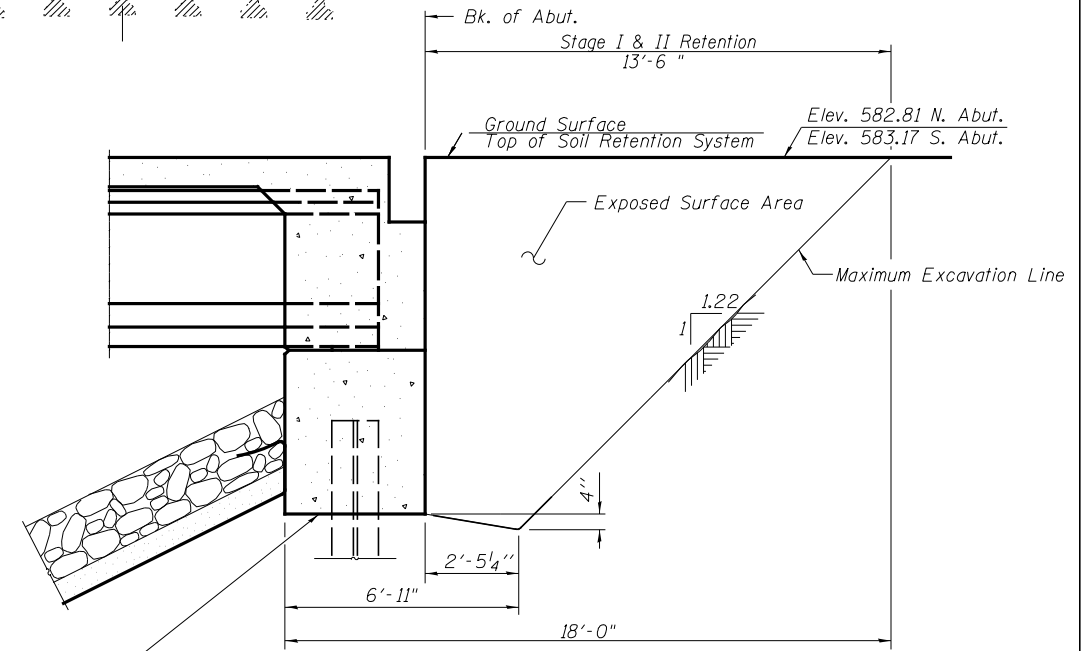
(Looking North)

\*The Raised Median shall be poured after Stage II Construction deck has met its required 14 day strength.



**STAGE II CONSTRUCTION AND TRAFFIC**

(Looking North)



**TEMPORARY SOIL RETENTION SYSTEM**

Horizontal Dimensions Parallel to Roadway  
(North Abutment shown, South Abutment similar)

A cantilevered sheet piling design does not appear feasible and additional members or other retention systems may be necessary. The Contractor shall submit a temporary soil retention system design including plan details and calculations for review and acceptance by the Engineer.

Notes:  
See sheet 4 of 30 for Temporary Concrete Barrier Details.  
See Roadway Plans for quantity of Temporary Concrete Barrier.  
Existing utilities to be relocated by others prior to bridge construction.

V:\3195\Structure\032-0123\0320123-66883-043-STAGING SEQU.dgn	USER NAME = bdecrane	DESIGNED - NPH	<b>Hutchison Engineering, Inc.</b> JACKSONVILLE-SHOREWOOD-PEORIA	<b>STATE OF ILLINOIS</b> <b>DEPARTMENT OF TRANSPORTATION</b>	<b>STAGE CONSTRUCTION DETAILS</b> <b>STRUCTURE NO. 032-0123</b>	F.A.P. RTE.	SECTION	COUNTY	TOTAL SHEETS	SHEET NO.
	PLOT SCALE = NONE	DRAWN - RMD				326	110BR-1	GRUNDY	644	361
	PLOT DATE = 8/6/2013	CHECKED - JOH/NPH				CONTRACT NO. 66B83				
						ILLINOIS FED. AID PROJECT				