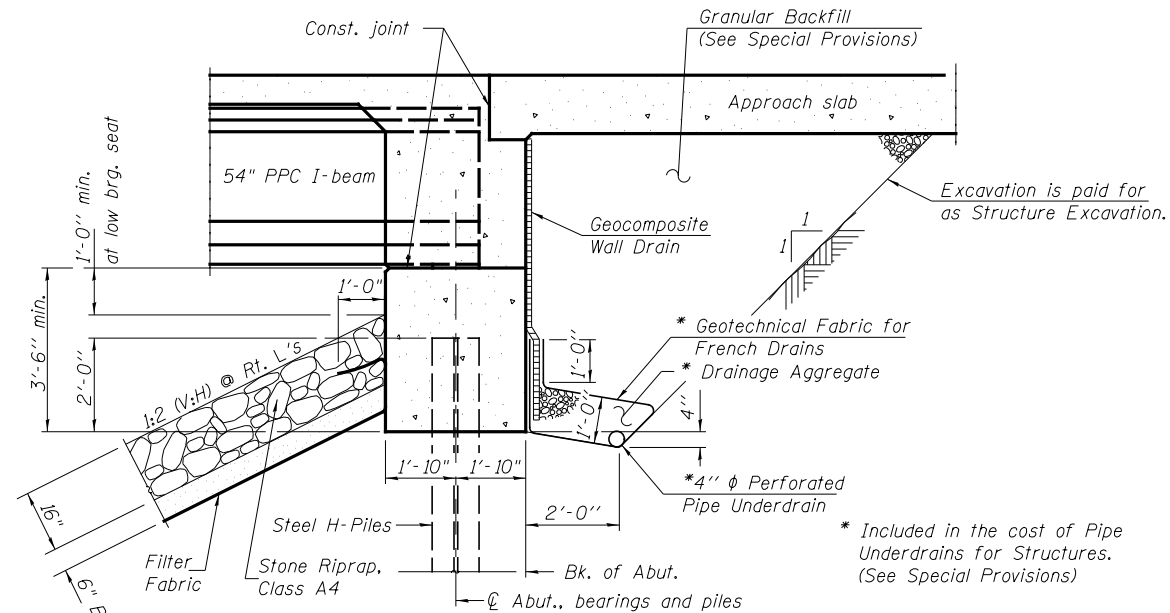


**TOTAL BILL OF MATERIAL**

ITEM	UNIT	SUPER	SUB	TOTAL
Removal of Existing Structures No. 2	EACH	—	—	1
Structure Excavation	CU YD	—	970	970
Concrete Structures	CU YD	—	247.4	247.4
Concrete Superstructure	CU YD	882.7	—	882.7
Bridge Deck Grooving	SQ YD	1,293	—	1,293
Protective Coat	SQ YD	1,962	—	1,962
Reinforcement Bars, Epoxy Coated	POUND	173,230	24,330	197,560
Name Plates	EACH	1	—	1
Furnishing and Erecting Precast Prestressed Concrete I-Beams, 54 in.	FOOT	1,473.5	—	1,473.5
Furnishing Steel Piles HPI2x63	FOOT	—	1,717	1,717
Driving Piles	FOOT	—	1,717	1,717
Test Pile Steel HPI2x63	EACH	—	1	1
Pile Shoes	EACH	—	40	40
Granular Backfill for Structures	CU YD	—	593	593
Bar Splicers	EACH	438	100	538
Pipe Underdrains for Structures 4"	FOOT	—	350	350
Geocomposite Wall Drain	SQ YD	—	300	300
Stone Riprap, Class A4	SQ YD	—	1,390	1,390
Filter Fabric	SQ YD	—	1,390	1,390
Temporary Soil Retention System	SQ FT	—	165	165
Floor Drains	EACH	10	—	10

**GENERAL NOTES**

Reinforcement bars designated (E) shall be epoxy coated.  
 Layout of slope protection system may be varied to suit ground conditions in the field as directed by the Engineer.  
 Protective coat shall be applied to the top and sides of the deck, and top and sides of curbs.  
 The embankment configuration shown shall be the minimum that must be placed and compacted prior to construction of the abutments.  
 The existing fixed bearings contain a 1/8" lead plate. The Contractor shall take appropriate precautions to deal with the presence of lead on this project.



All drainage system components shall extend 2'-0" from the end of each wingwall except an outlet pipe shall extend until intersecting with the side slopes. The pipes shall drain into concrete headwalls. (See Article 601.05 of the Standard Specifications and Highway Standard 601101).

**SECTION THRU INTEGRAL ABUTMENT**  
 (Horiz. dim. @ Rt. L's)

**STATION 6185+94.00**  
**BUILT 201\_ BY**  
**STATE OF ILLINOIS**  
**F.A.P. RT. 326 SEC. 110BR-1**  
**LOADING HL-93**  
**STR. NO. 032-0123**

**NAME PLATE**  
 (See Std. 515001)

**INDEX OF SHEETS**

SHEET #'s	DESCRIPTION
1	General Plan & Elevation
2	General Notes & Details
3	Stage Construction Details
4	Temporary Concrete Barrier For Stage Construction
5 - 8	Top of Slab Elevations
9 - 10	Top of Approach Slab Elevations
11	Superstructure
12	Superstructure Details
13	Diaphragm Details
14 - 15	Bridge Approach Slab Details
16	Framing Plan
17	54" PPC I-Beam
18	54" PPC I-Beam Details
19 - 20	South Abutment
21 - 22	North Abutment
23	HP Pile Details
24	Bar Splicer Assembly & Mechanical Splicer Details
25	Concrete Parapet Slipforming Option
26-30	Boring Logs