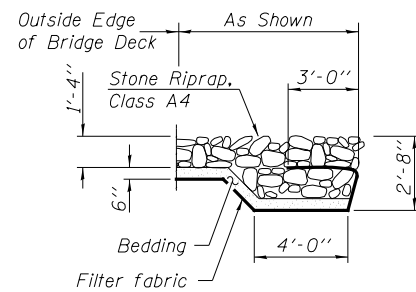


GENERAL NOTES

Reinforcement bars designated (E) shall be epoxy coated.
 Layout of slope protection system may be varied in the field to suit ground conditions as directed by the engineer.
 Protective coat shall be applied to the top of the deck, top and sides of the median, and inside face and top of the parapets.
 The embankment configuration shown shall be the minimum that must be placed and compacted prior to construction of the abutments.
 The existing fixed bearings contain 1/8" lead plate. The Contractor shall take appropriate precautions to deal with the presence of lead on this project.

TOTAL BILL OF MATERIAL

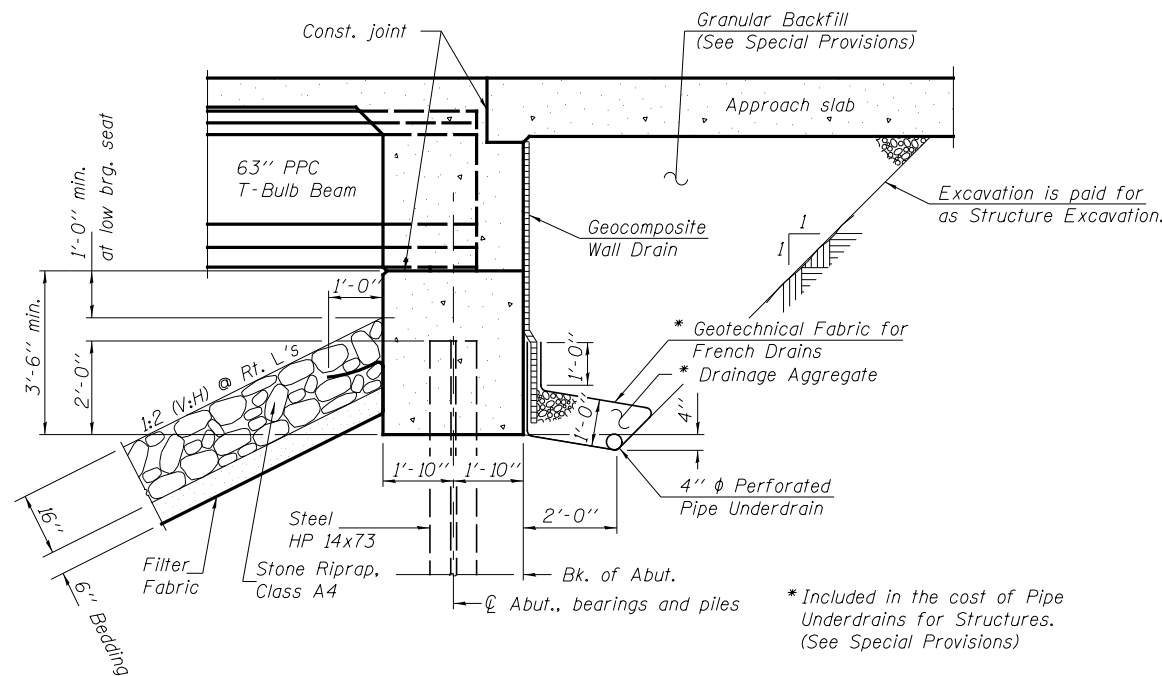
ITEM	UNIT	SUPER	SUB	TOTAL
Granular Backfill For Structures	CU YD	—	650	650
Stone Riprap, Class A4	SQ YD	—	1,530	1,530
Filter Fabric	SQ YD	—	1,530	1,530
Removal of Existing Structures No. 1	EACH	—	1	1
Structure Excavation	CU YD	—	920	920
Concrete Structures	CU YD	—	243.0	243.0
Concrete Superstructure	CU YD	973.5	—	973.5
Bridge Deck Grooving	SQ YD	1,360	—	1,360
Protective Coat	SQ YD	2,065	—	2,065
Furnishing and Erecting Precast Prestressed Concrete Bulb T-Beams 63"	FOOT	1,399	—	1,399
Reinforcement Bars, Epoxy Coated	POUND	185,120	27,980	213,100
Bar Splicers	EACH	587	20	607
Furnishing Steel Piles HP14x73	FOOT	—	1,475	1,475
Driving Piles	FOOT	—	1,475	1,475
Test Pile Steel HP14x73	EACH	—	2	2
Pile Shoes	EACH	—	37	37
Name Plates	EACH	1	—	1
Geocomposite Wall Drain	SQ YD	—	290	290
Pipe Underdrains For Structures 4"	FOOT	—	340	340
Temporary Soil Retention System	SQ FT	—	213	213



SECTION A-A

**STATION 6118+40.00
 BUILT 201_ BY
 STATE OF ILLINOIS
 F.A.P. RT. 326 SEC. 110BR
 LOADING HL-93
 STR. NO. 032-0122**

NAME PLATE
 (See Std. 515001)



Note:
 All drainage system components shall extend to 2'-0" from the end of each wingwall except an outlet pipe shall extend until intersecting with the side slopes. The pipes shall drain into concrete headwalls. (See Article 601.05 of the Standard Specifications and Highway Standard 60110)

SECTION THRU INTEGRAL ABUTMENT

(Horizontal Dimensions @ Right Angles)

INDEX OF SHEETS

SHEET #'s	DESCRIPTION
1	General Plan
2	General Notes and Details
3	Stage Construction Details for Stage Construction
4	Temporary Concrete Barrier For Stage Construction
5-8	Top of Slab Elevations
9-10	Top of Approach Slab Elevations
11	Superstructure
12	Superstructure Details
13	Diaphragm Details
14-17	Bridge Approach Slab Details
18	Framing Plan and Details
19	63" PPC Bulb T-Beam
20	63" PPC Bulb T-Beam Details
21-22	South Abutment
23-24	North Abutment
25	HP Pile Details
26	Bar Splicer Assembly and Mechanical Splicer Details
27	Concrete Parapet Slipforming Option
28-32	Boring Logs