

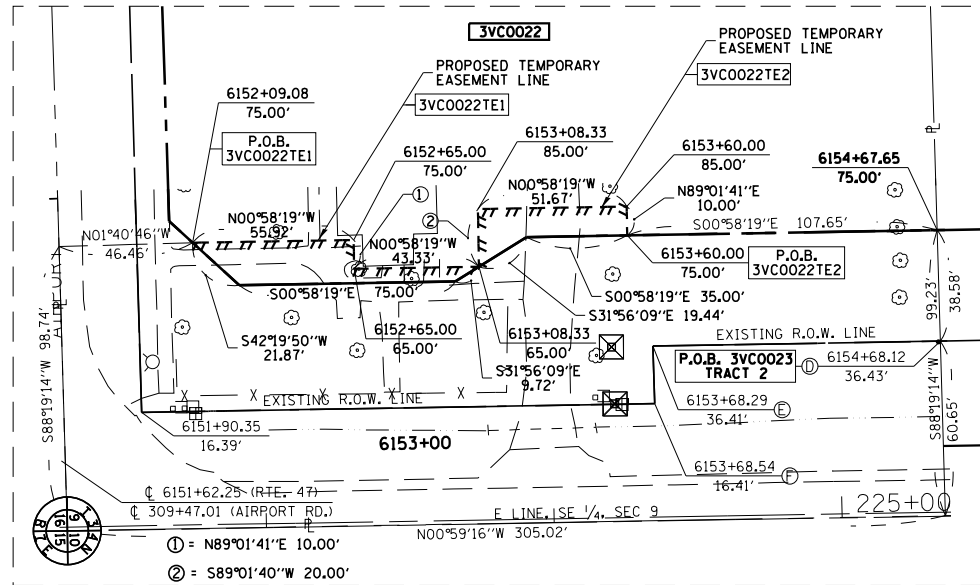
SE 1/4 OF SEC. 9, T.34 N., R.7 E. OF THE 3RD P.M.

RECOVERED MONUMENT TABLE	
A	R.O.W. 0.19' N & 0.28' W
B	I.P. 2.03' S & 0.09' E
C	R.O.W. 0.16' N & 0.22' E
D	TEE 0.65' S & 0.27' E
E	R.O.W. 14.33' S & 0.38' E
F	R.O.W. 13.85' S & 0.38' E

3VC0024

KIRK ANDERSON, et al

TOTAL HOLDING	=	117.412 AC.±
TOTAL R.O.W. REQUIRED	=	0.360 AC.±
AREA IN EXIST. R.O.W.	=	0.215 AC.±
NET R.O.W. REQUIRED	=	0.145 AC.±
REMAINDER	=	117.052 AC.±



DETAIL A
NO SCALE

3VC0023

A-G ROUTE 47 PROPERTIES 112, LLC

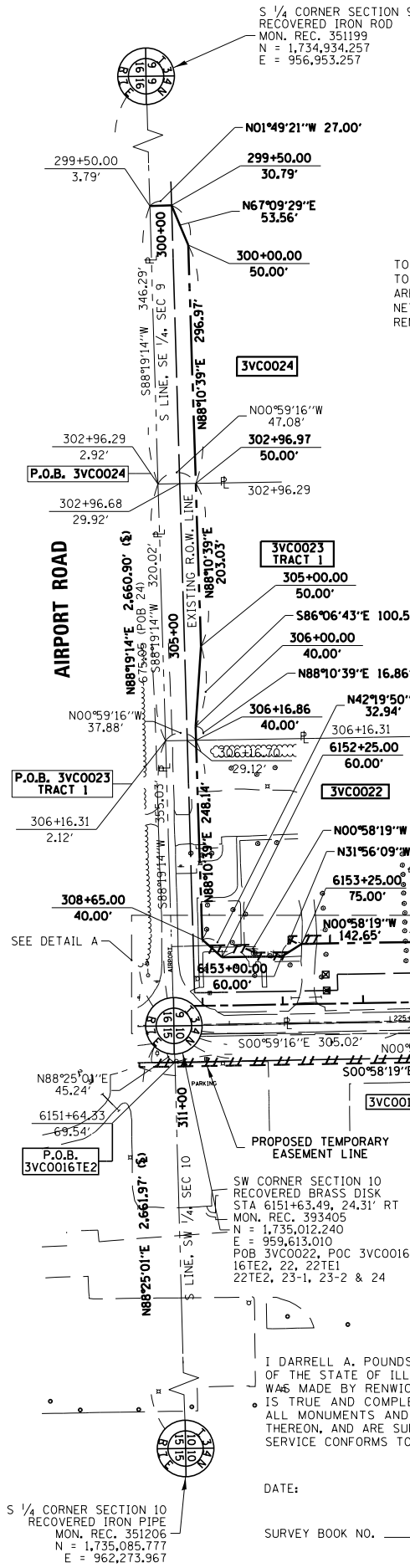
TOTAL HOLDING	=	33.310 AC.±
TOTAL R.O.W. REQUIRED	=	3.382 AC.±
TRACT 1	=	0.333 AC.±
TRACT 2	=	3.049 AC.±
AREA IN EXIST. R.O.W.	=	0.199 AC.±
TRACT 1	=	0.199 AC.±
TRACT 2	=	0.000 AC.±
NET R.O.W. REQUIRED	=	3.183 AC.±
TRACT 1	=	0.134 AC.±
TRACT 2	=	3.049 AC.±
REMAINDER	=	29.928 AC.±

PROP. CURVE IL47P12.07
 PI STA. = 6171+98.97
 Δ = 4° 28' 05" (RT)
 D = 0° 42' 58"
 R = 8,000.00'
 T = 312.08'
 L = 623.85'
 E = 6.08'
 P.C. STA. = 6168+86.89
 P.T. STA. = 6175+10.73

3VC0022
GRACE EVANGELICAL LUTHERAN CHURCH

TOTAL HOLDING	=	2.550 AC.±
TOTAL R.O.W. REQUIRED	=	0.887 AC.±
AREA IN EXIST. R.O.W.	=	0.525 AC.±
NET R.O.W. REQUIRED	=	0.362 AC.±
REMAINDER	=	1.663 AC.±
TEMPORARY EASEMENT 1	=	0.021 AC.± (915 SQ. FT.±)
PURPOSE: ENTRANCE AND SIDEWALK CONSTRUCTION		
TEMPORARY EASEMENT 2	=	0.014 AC.± (600 SQ. FT.±)
PURPOSE: ENTRANCE AND SIDEWALK CONSTRUCTION		

PROP. CURVE IL47P12.06
 PI STA. = 6165+80.55
 Δ = 4° 23' 24" (LT)
 D = 0° 42' 58"
 R = 8,000.00'
 T = 306.64'
 L = 612.98'
 E = 5.87'
 P.C. STA. = 6162+73.91
 P.T. STA. = 6168+86.89



3VC0016

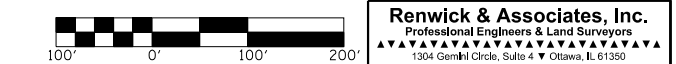
CITY OF MORRIS
 (SEE SHEET 7 FOR AREAS)

I DARRELL A. POUNDSTONE, HEREBY CERTIFY THAT I AM A PROFESSIONAL LAND SURVEYOR OF THE STATE OF ILLINOIS, THAT THE SURVEY OF PROPOSED F.A.P. 326 (ILLINOIS ROUTE 47) WAS MADE BY RENWICK & ASSOCIATES, INC. UNDER MY DIRECTION, AND THAT THE SURVEY IS TRUE AND COMPLETE AS SHOWN TO THE BEST OF MY KNOWLEDGE AND BELIEF, THAT ALL MONUMENTS AND MARKS ARE OF THE CHARACTER AND OCCUPY THE POSITION SHOWN THEREON, AND ARE SUFFICIENT TO ENABLE THE SURVEY TO BE RETRACED. THIS PROFESSIONAL SERVICE CONFORMS TO THE CURRENT ILLINOIS MINIMUM STANDARDS FOR A BOUNDARY SURVEY.

DATE: _____
 ILLINOIS PROFESSIONAL LAND SURVEYOR
 NO. 3485
 SURVEY BOOK NO. _____
 11-30-2012
 EXPIRATION DATE

SW 1/4 OF SEC. 10, T.34 N., R.7 E. OF THE 3RD P.M.

- NOTES:
- ALL BEARINGS AND DISTANCES (GRID) ARE REFERENCED TO THE ILLINOIS STATE PLANE COORDINATE SYSTEM, EAST ZONE (N.A.D. 83-2007 ADJ.)
 - GRID DISTANCE (AS LABELED) x 1.00004933 = GROUND DISTANCE



Renwick & Associates, Inc.
 Professional Engineers & Land Surveyors
 1304 Genl'l Circle, Suite 4 • Ottawa, IL 61350

FILE NAME:	USER NAME = MITCHELL	DESIGNED -	REVISED - PARCEL 16 1/17/13 MKB	STATE OF ILLINOIS DEPARTMENT OF TRANSPORTATION	RIGHT OF WAY PLANS		F.A.P. R.T.E. SECTION COUNTY TOTAL SHEETS NO.	
PLOT SCALE = 1" = 100'	CHECKED -	REVISED - PARCEL 16 2/04/13 MKB			PROJECT	JOB NO. R-93-003-08	(110R, BR & BR-1)	GRUNDY & LASALLE 64 246
PLOT DATE: JULY 25, 2012	DATE -	REVISED -			SCALE: 1"=100'	SHEET NO. 9 OF 36 SHEETS	STA. 6151+63.49 TO STA. 6178+16.93	CONTRACT NO. 66B83
								FED. ROAD DIST. NO. - ILLINOIS FED. AID PROJECT