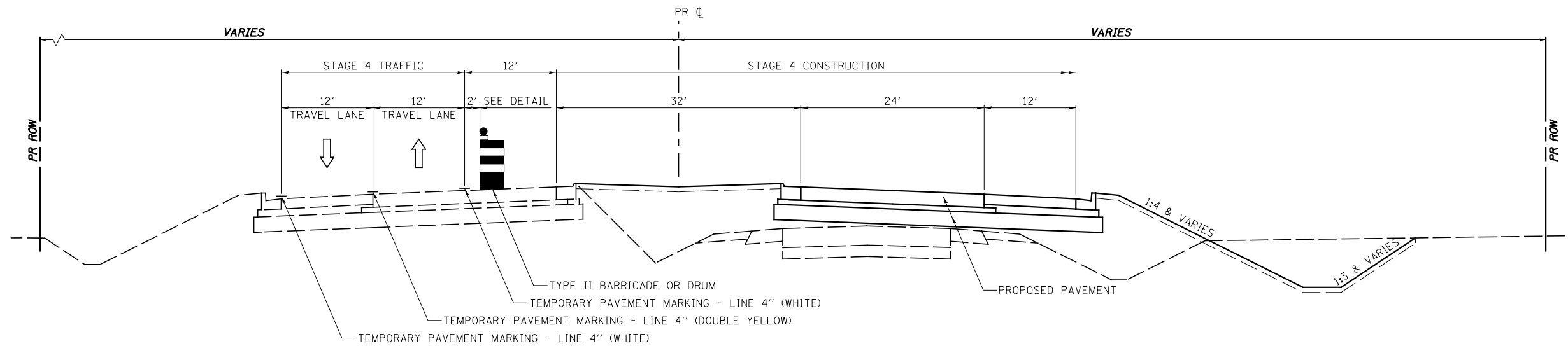


**DETAIL AT STRUCTURE**

STA. 6117+27 TO STA. 6119+30



**STAGE 4 TYPICAL SECTION**

**IL. RTE. 47**

STA. 6104+00 TO STA. 6185+00

**TRAFFIC CONTROL AND PROTECTION**

TRAFFIC CONTROL AND PROTECTION SHALL BE PERFORMED IN ACCORDANCE WITH THE TRAFFIC CONTROL PLAN, SECTION 701 OF THE STANDARD SPECIFICATIONS AND THE SPECIAL PROVISIONS.

TWO-WAY TRAFFIC SHALL BE ACCOMMODATED AT ALL TIMES EXCEPT DURING ISOLATED FLAGGER CONTROLLED LANE CLOSURES.

EXISTING TRAFFIC CONTROL SIGNS AND DEVICES IN CONFLICT WITH STAGE 4 CONSTRUCTION ARE TO BE REMOVED BY THE CONTRACTOR AFTER THE PROPOSED TRAFFIC CONTROL AND PROTECTION REQUIREMENTS ARE MET OR AS AUTHORIZED BY THE ENGINEER. SIGNS OR DEVICES LEFT IN PLACE AT THIS TIME ARE TO BE PROTECTED FROM DAMAGE.

NO DROP-OFF GREATER THAN 18" WITHIN 3' OF THE TRAVEL LANE OR GREATER THAN 24" WITHIN 12' OF THE TRAVEL LANE WILL BE ALLOWED UNLESS A FLAGGER CONTROLLED LANE CLOSURE IS PROVIDED. THE CONTRACTOR SHALL SCHEDULE HIS OPERATIONS TO ENSURE THESE CONDITIONS DO NOT OCCUR DURING NON-WORKING HOURS DURING STAGE 4.

VERTICAL PANELS, TYPE II BARRICADES OR DRUMS WITH WARNING LIGHTS ARE REQUIRED TO DELINEATE THE WORK AREA. THE MAXIMUM SPACING SHALL BE 100 FEET ALONG THE TANGENTS, 50 FEET ALONG THE TAPERS AND 25 FEET ALONG RADII TO SIDE ROADS AND ENTRANCES.

THE FOLLOWING TRAFFIC CONTROL STANDARDS ARE THE MINIMUM REQUIREMENTS FOR TRAFFIC CONTROL AND PROTECTION DURING THIS STAGE: 701001, 701006, 701011, 701201, 701301, 701326, 701602 & 701901.

**STAGE 4 CONSTRUCTION**

AT THE VERY BEGINNING OF STAGE 4 WHEN TRAFFIC IS SHIFTED INTO STAGE 4 CONFIGURATION THE CONTRACTOR SHALL IMMEDIATELY COMPLETE VARIABLE DEPTH MILLING AND RESURFACING AND TEMPORARY PAVEMENT MARKING AT THE NORTH END OF THE SOUTHBOUND CONNECTION.

CONSTRUCT NORTHBOUND PAVEMENT, CULVERTS AND BRIDGE PORTIONS FROM STA 6104+00± TO STA 6265+00±.

THE MAIN AIRPORT ENTRANCE AT STA 6151+62± SHALL REMAIN OPEN AT ALL TIMES.

STAGE 4 SHALL BE CONSTRUCTED IN A MANNER TO ENSURE ONE OF THE FOLLOWING ROADS ARE OPEN AT ALL TIMES:  
MINOOKA RD. (EAST LEG)  
SHERRILL RD. (EAST LEG)

EACH SIDE ROAD CLOSURE IS LIMITED TO 30 CALENDAR DAYS.

UPON COMPLETION OF THE NORTHBOUND LANES AND CONNECTION, NORTHBOUND TRAFFIC WILL BE SHIFTED TO THE COMPLETED LANES. THE TEMPORARY PAVEMENT BETWEEN STA 6100+00 & STA 6105+00 WILL BE REMOVED AND THE REMAINING MEDIAN AREA WILL BE COMPLETED.

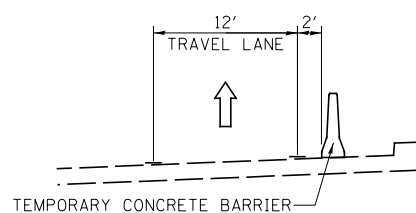
THE CONTRACTOR IS REQUIRED TO PROVIDE AND MAINTAIN TEMPORARY DRAINAGE. UNLESS OTHERWISE NOTED PROPOSED DRAINAGE ITEMS ARE TO BE USED FOR TEMPORARY DRAINAGE. ADJUSTMENT TO INLETS OR MANHOLES FROM TEMPORARY ELEVATIONS TO FINAL ELEVATIONS WILL BE INCLUDED IN THE COST OF THE PROPOSED DRAINAGE STRUCTURES.

CONSTRUCTION OF THE MEDIAN CURB IS TO BE GAPPED TO ALLOW ENTRANCE ACCESS FROM:

- STA 6110+75 TO STA 6111+25
- STA 6112+75 TO STA 6113+25
- STA 6144+75 TO STA 6145+25
- STA 6153+00 TO STA 6153+50
- STA 6157+00 TO STA 6157+50
- STA 6171+25 TO STA 6171+75
- STA 6173+75 TO STA 6174+25
- STA 6178+50 TO STA 6179+00

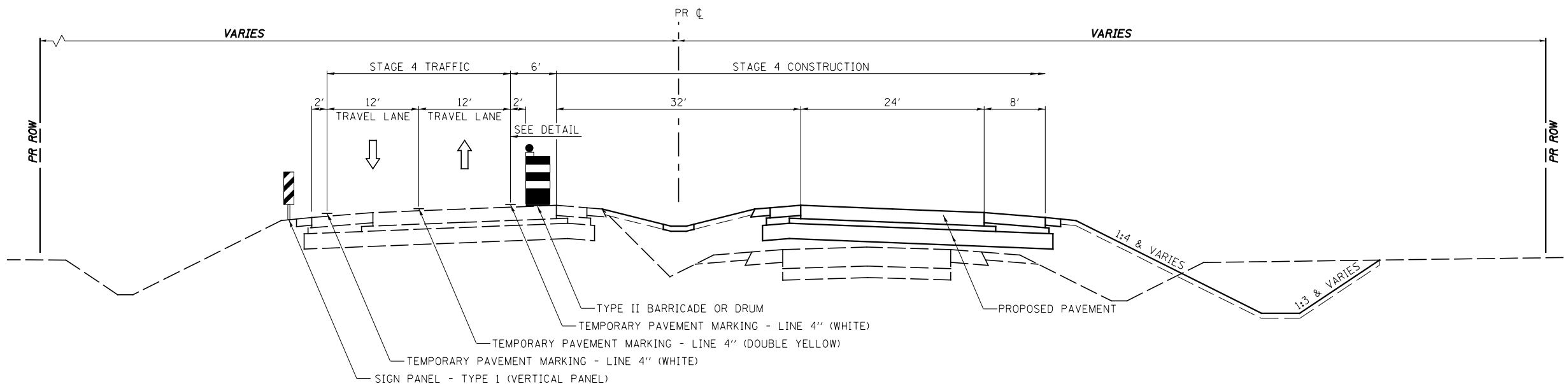
POST STAGE 4, WHEN TRAFFIC IS IN FINAL CONFIGURATION, ALL REMAINING MEDIAN GAPS ARE TO BE COMPLETED.

TEMPORARY PAVEMENT MARKING ON FINAL WEARING SURFACE SHALL BE PAVEMENT MARKING TAPE, TAPE IV



**DETAIL AT STRUCTURE**

STA. 6185+05 TO STA. 6187+09



**STAGE 4 TYPICAL SECTION**

**IL. RTE. 47**

STA. 6185+00 TO STA. 6265+00

|   |                       |                  |           |
|---|-----------------------|------------------|-----------|
| FILE NAME =   | USER NAME = bdecreane | DESIGNED - LDZ   | REVISED - |
| V:\3195\66883 (South Section)\CADD Sheets\0366883-sh4-staging4typical-1.dgn |                       | DRAWN - SRH/RMD  | REVISED - |
| PLOT SCALE = 16.000' / 1" =   |                       | CHECKED - DJD    | REVISED - |
| PLOT DATE = 8/6/2013  |                       | DATE - 7/15/2013 | REVISED - |

STATE OF ILLINOIS  
DEPARTMENT OF TRANSPORTATION

|  |                         |          |             |
|--|-------------------------|----------|-------------|
| <b>IL. RTE. 47</b>                                       |                         |          |             |
| <b>STAGE 4 CONSTRUCTION NOTES &amp; TYPICAL SECTIONS</b> |                         |          |             |
| SCALE: N/A   | SHEET NO. 1 OF 1 SHEETS | STA. N/A | TO STA. N/A |

|                           |                   |        |              |           |
|---------------------------|-------------------|--------|--------------|-----------|
| F.A.P. RTE.               | SECTION           | COUNTY | TOTAL SHEETS | SHEET NO. |
| 326                       | (110)R, BR & BR-1 | GRUNDY | 644          | 177       |
| CONTRACT NO.              |                   |        |              |           |
| ILLINOIS FED. AID PROJECT |                   |        |              |           |