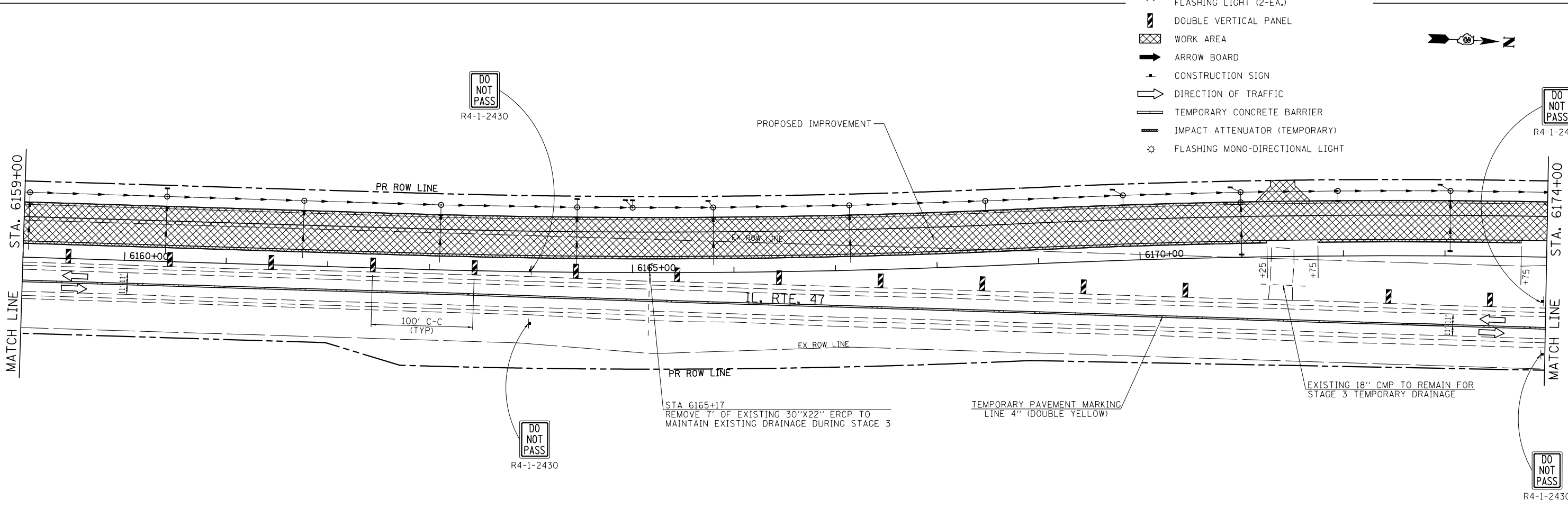


**LEGEND**

- ↑ DIRECTION INDICATOR BARRICADE WITH STEADY BURN MONDIRECTIONAL LIGHT
- ↓ TYPE II BARRICADE, DRUM OR VERTICAL BARRICADE WITH STEADY BURN BI-DIRECTIONAL LIGHT
- ↔ TYPE III BARRICADE WITH FLASHING LIGHT (2-EA.)
- ▬ DOUBLE VERTICAL PANEL
- ▨ WORK AREA
- ➔ ARROW BOARD
- ⚠ CONSTRUCTION SIGN
- ➡ DIRECTION OF TRAFFIC
- ▬ TEMPORARY CONCRETE BARRIER
- ▬ IMPACT ATTENUATOR (TEMPORARY)
- ⚡ FLASHING MONO-DIRECTIONAL LIGHT



FILE NAME = V:\3195\66883 (South Section)\CADD Sheets\0366883-sht-staging3-5.dgn	USER NAME = bdecreene	DESIGNED - LDZ	REVISED -	<b>STATE OF ILLINOIS DEPARTMENT OF TRANSPORTATION</b>	<b>IL. RTE. 47 STAGE 3 CONSTRUCTION &amp; TRAFFIC CONTROL</b>			F.A.P. RTE. 326	SECTION (110)R, BR & BR-1	COUNTY GRUNDY	TOTAL SHEETS 644	SHEET NO. 167
SHT_DOUBLE PLAN	PLOT DATE = 8/6/2013	DRAWN - SRH/RMD	REVISED -					SCALE: 1"=50'	SHEET 6 OF 10 SHEETS	STA. 6144+00 TO STA. 6174+00	CONTRACT NO. 66883	
		CHECKED - DJD	REVISED -		ILLINOIS FED. AID PROJECT							
		DATE - 7/15/2013	REVISED -									