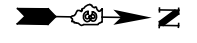
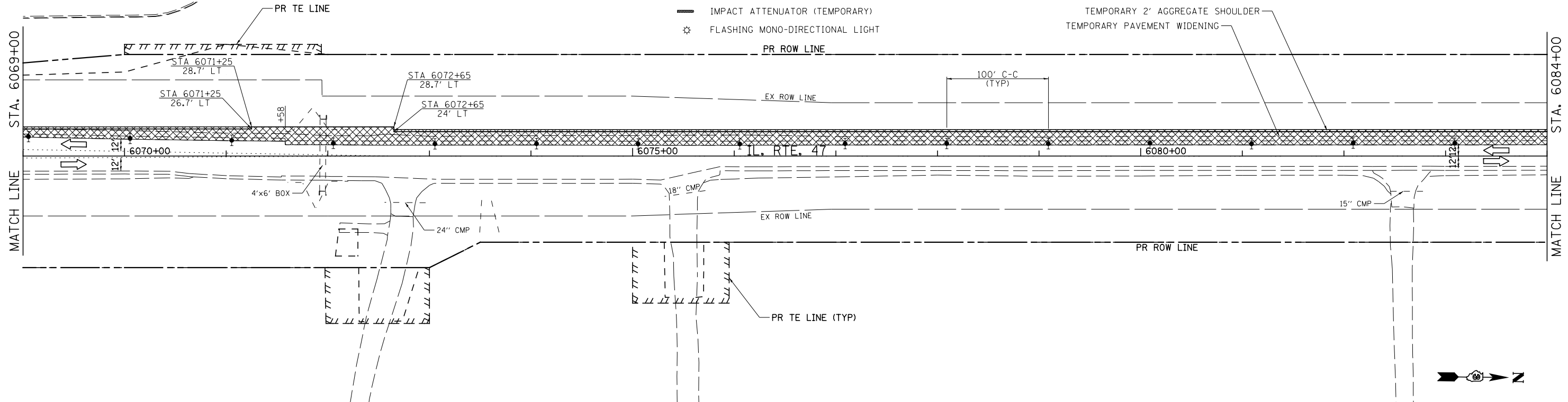
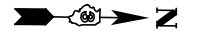


STA 6060+56
 PIPE CULVERT, TYPE 1, 18"x16" (TEMPORARY)
 INV 552.50, STA 6060+50, 61.0' LT
 INV 552.25, STA 6060+62, 49.3' LT

- LEGEND**
- ↑ DIRECTION INDICATOR BARRICADE WITH STEADY BURN MONDIRECTIONAL LIGHT
 - ↓ TYPE II BARRICADE, DRUM OR VERTICAL BARRICADE WITH STEADY BURN BI-DIRECTIONAL LIGHT
 - ↑↑ TYPE III BARRICADE WITH FLASHING LIGHT (2-EA.)
 - ▬ DOUBLE VERTICAL PANEL
 - ▨ WORK AREA
 - ➔ ARROW BOARD
 - ⊥ CONSTRUCTION SIGN
 - ➔ DIRECTION OF TRAFFIC
 - ▬ TEMPORARY CONCRETE BARRIER
 - ▬ IMPACT ATTENUATOR (TEMPORARY)
 - ⊛ FLASHING MONO-DIRECTIONAL LIGHT

WORK ZONE W21-1115(0)-3618
 SPEED LIMIT 45
 PHOTO ENFORCED R10-19aP-3618
 #375 FINE MINIMUM R2-1106-3618



FILE NAME =	USER NAME = bdecreene	DESIGNED - LDZ	REVISED -
V:\3195\66883 (South Section)\CADD Sheets\0366883-sht-staging1-2.dgn		DRAWN - SRH/RMD	REVISED -
	PLOT SCALE = 100.0000' / in.	CHECKED - DJD	REVISED -
SHT.DOUBLE.PLAN	PLOT DATE = 8/6/2013	DATE - 7/15/2013	REVISED -

**STATE OF ILLINOIS
 DEPARTMENT OF TRANSPORTATION**

IL. RTE. 47 STAGE 1 CONSTRUCTION & TRAFFIC CONTROL

SCALE: 1"=50' SHEET 2 OF 4 SHEETS STA. 6054+00 TO STA. 6084+00

F.A.P. RTE.	SECTION	COUNTY	TOTAL SHEETS	SHEET NO.
326	(110)R, BR & BR-1	GRUNDY	644	148
CONTRACT NO. 66883				
ILLINOIS FED. AID PROJECT				