

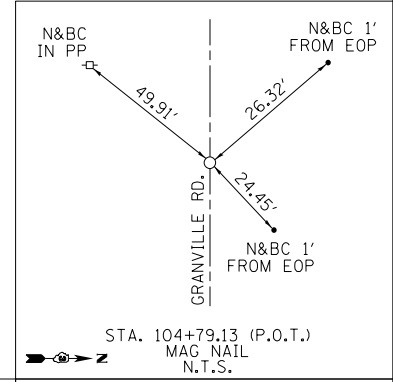
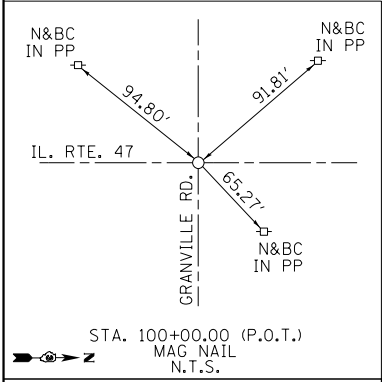
MATCH LINE STA. 6240+00
SEE PREVIOUS SHEET

BM #719
RR SPIKE IN W. FACE OF
PP LOCATED ON E. SIDE
OF IL. RTE. 47
S. OF 2ND HOUSE S.
OF SHERRILL RD.
127.5' RT, STA 6252+10.7
ELEV. 592.26

BM #718
RR SPIKE IN W. FACE
OF LAST PP ON W. SIDE
OF IL. RTE. 47 N. OF
SHERRILL RD.
4.4' LT, STA 6257+77.6
ELEV. 594.19

BM #7020/720
CUT "+" N. END OF E.
HEADWALL ON BOX CULVERT
950' S. OF SHERRILL RD.
107.3' RT, STA 6248+01.9
ELEV. 587.90

END IMPROVEMENT
STA. 6265+00



SIDE ROAD TIES

