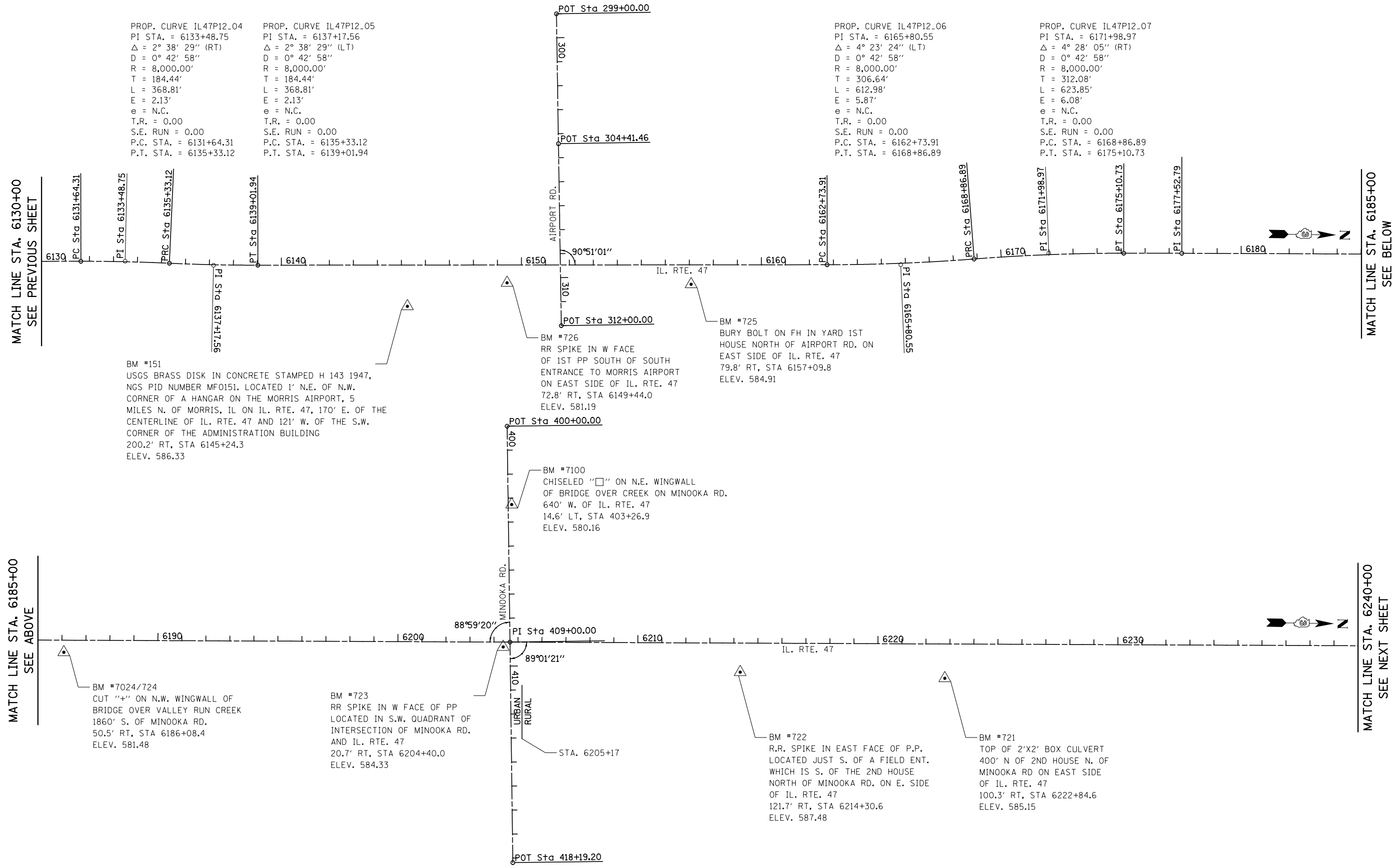


PROP. CURVE IL47P12_04
 PI STA. = 6133+48.75
 $\Delta = 2^\circ 38' 29''$ (RT)
 $D = 0^\circ 42' 58''$
 $R = 8,000.00'$
 $T = 184.44'$
 $L = 368.81'$
 $E = 2.13'$
 $e = \text{N.C.}$
 $T.R. = 0.00$
 $S.E. \text{ RUN} = 0.00$
 $P.C. \text{ STA.} = 6131+64.31$
 $P.T. \text{ STA.} = 6135+33.12$

PROP. CURVE IL47P12_05
 PI STA. = 6137+17.56
 $\Delta = 2^\circ 38' 29''$ (LT)
 $D = 0^\circ 42' 58''$
 $R = 8,000.00'$
 $T = 184.44'$
 $L = 368.81'$
 $E = 2.13'$
 $e = \text{N.C.}$
 $T.R. = 0.00$
 $S.E. \text{ RUN} = 0.00$
 $P.C. \text{ STA.} = 6135+33.12$
 $P.T. \text{ STA.} = 6139+01.94$

PROP. CURVE IL47P12_06
 PI STA. = 6165+80.55
 $\Delta = 4^\circ 23' 24''$ (LT)
 $D = 0^\circ 42' 58''$
 $R = 8,000.00'$
 $T = 306.64'$
 $L = 612.98'$
 $E = 5.87'$
 $e = \text{N.C.}$
 $T.R. = 0.00$
 $S.E. \text{ RUN} = 0.00$
 $P.C. \text{ STA.} = 6162+73.91$
 $P.T. \text{ STA.} = 6168+86.89$

PROP. CURVE IL47P12_07
 PI STA. = 6171+98.97
 $\Delta = 4^\circ 28' 05''$ (RT)
 $D = 0^\circ 42' 58''$
 $R = 8,000.00'$
 $T = 312.08'$
 $L = 623.85'$
 $E = 6.08'$
 $e = \text{N.C.}$
 $T.R. = 0.00$
 $S.E. \text{ RUN} = 0.00$
 $P.C. \text{ STA.} = 6168+86.89$
 $P.T. \text{ STA.} = 6175+10.73$



MATCH LINE STA. 6130+00
SEE PREVIOUS SHEET

MATCH LINE STA. 6185+00
SEE BELOW

MATCH LINE STA. 6185+00
SEE ABOVE

MATCH LINE STA. 6240+00
SEE NEXT SHEET



FILE NAME =	USER NAME = bdecreane	DESIGNED - AS	REVISED -
V:\3195\66883 (South Section)\CADD Sheets\0366883-sh1-ATB-02.dgn		DRAWN - AS	REVISED -
	PLOT SCALE = 400.0000' / in.	CHECKED - ST	REVISED -
SHT.PLAN	PLOT DATE = 8/6/2013	DATE - 7/15/2013	REVISED -

**STATE OF ILLINOIS
DEPARTMENT OF TRANSPORTATION**

IL. RTE. 47 ALIGNMENT, TIES & BENCHMARKS		
SCALE: 1"=200'	SHEET NO. 2 OF 4 SHEETS	STA. 6130+00.00 TO STA. 6240+00.00

F.A.P. RTE.	SECTION	COUNTY	TOTAL SHEETS	SHEET NO.
326	(110)R, BR & BR-1	GRUNDY	644	96
			CONTRACT NO. 66B83	
ILLINOIS FED. AID PROJECT				