

F.A.S. RTE.	SECTION	COUNTY	TOTAL SHEETS	SHEET NO.
1323	102BR	KANKAKEE	53	1
		ILLINOIS	CONTRACT NO. 66B66	

STATE OF ILLINOIS
DEPARTMENT OF TRANSPORTATION
DIVISION OF HIGHWAYS
**PROPOSED
HIGHWAY PLANS**

FAS ROUTE 1323 (IL 115)
SECTION 102 BR
PROJECT: *ACRS-1323(115)*
SUPERSTRUCTURE REPLACEMENT
KANKAKEE COUNTY
C-93-015-13

INDEX OF SHEETS

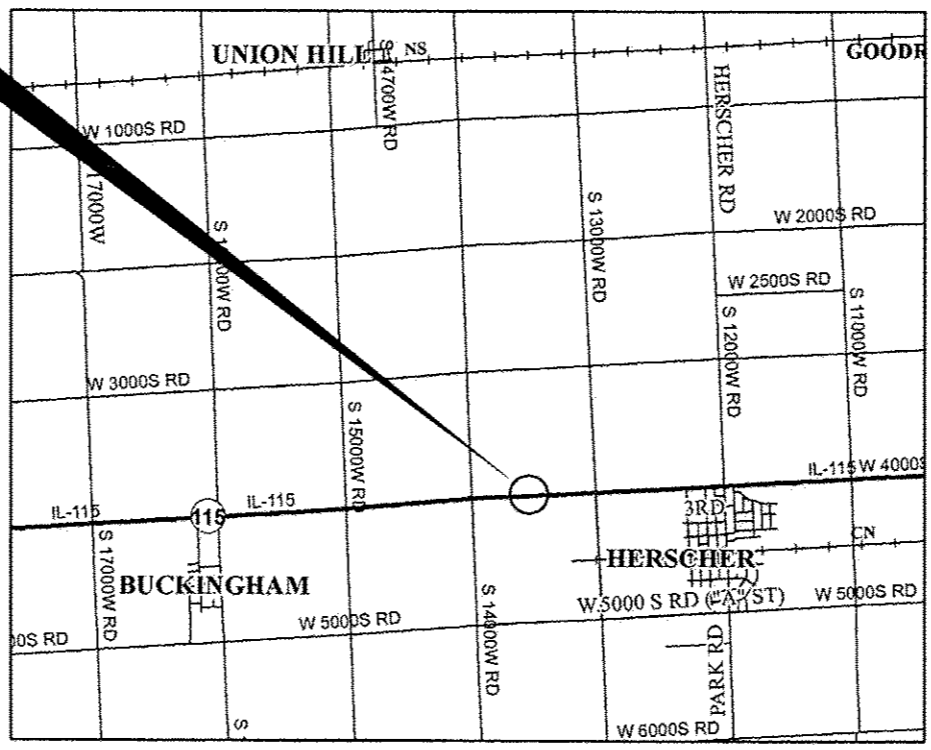
- 1 COVER SHEET
- 2 HIGHWAY STANDARDS & GENERAL NOTES
- 3 - 7 SUMMARY OF QUANTITIES
- 8 TYPICAL SECTIONS
- 9 SCHEDULE OF QUANTITIES
- 10 - 11 ALIGNMENT, TIES & BENCHMARKS
- 12 - 14 PLAN & PROFILE SHEETS
- 15 DETOUR PLANS
- 16 RIGHT OF WAY PLAN
- 17 - 38 SN 046-0109 STRUCTURE PLANS
- 39 - 44 FOR INFORMATION ONLY
- 45 - 46 DETAILS
- 47 - 53 CROSS SECTIONS

FOR HIGHWAY STANDARDS, SEE SHEET NO. 2

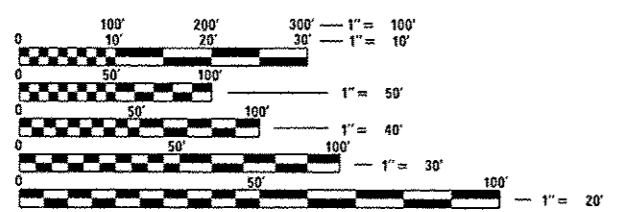
P-93-044-04
D-93-016-13



**SN 046-0109
REMOVE AND REPLACE
EXISTING SUPERSTRUCTURE**



MICROFILMED _____
REEL NUMBER _____
AWARDED _____
RESIDENT ENGINEER _____
AS BUILT CHANGES WERE MADE
ON THE FOLLOWING SHEETS _____



FULL SIZE PLANS HAVE BEEN PREPARED USING STANDARD ENGINEERING SCALES. REDUCED SIZED PLANS WILL NOT CONFORM TO STANDARD SCALES. IN MAKING MEASUREMENTS ON REDUCED PLANS, THE ABOVE SCALES MAY BE USED.

J.U.L.I.E.
JOINT UTILITY LOCATION INFORMATION FOR EXCAVATION
1-800-892-0123
OR 811

PROJECT ENGINEER: CRAIG REED, P.E.
UNIT CHIEF: BRAD DUNCAN, P.E.
DISTRICT 3 NO. (815) 434-6131
CONTRACT NO. 66B66

GROSS LENGTH = 505 FT. = 0.10 MILE
NET LENGTH = 505 FT. = 0.10 MILE

MAJOR COLLECTOR (RURAL)
2011 ADT = 1750

PV = 96% SU = 2% MU = 2%

STATE OF ILLINOIS
DEPARTMENT OF TRANSPORTATION
DIVISION OF HIGHWAYS

SUBMITTED *August 13 2013*
Paul A. Casper
DEPUTY DIRECTOR OF HIGHWAYS, REGION ENGINEER

October 4 2013
John D. Baranzelli, P.E.
ENGINEER OF DESIGN AND ENVIRONMENT

October 4 2013
Omer Asham, P.E.
DIRECTOR OF HIGHWAYS, CHIEF ENGINEER

**PRINTED BY THE AUTHORITY
OF THE STATE OF ILLINOIS**