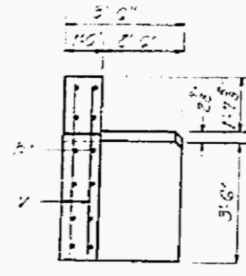
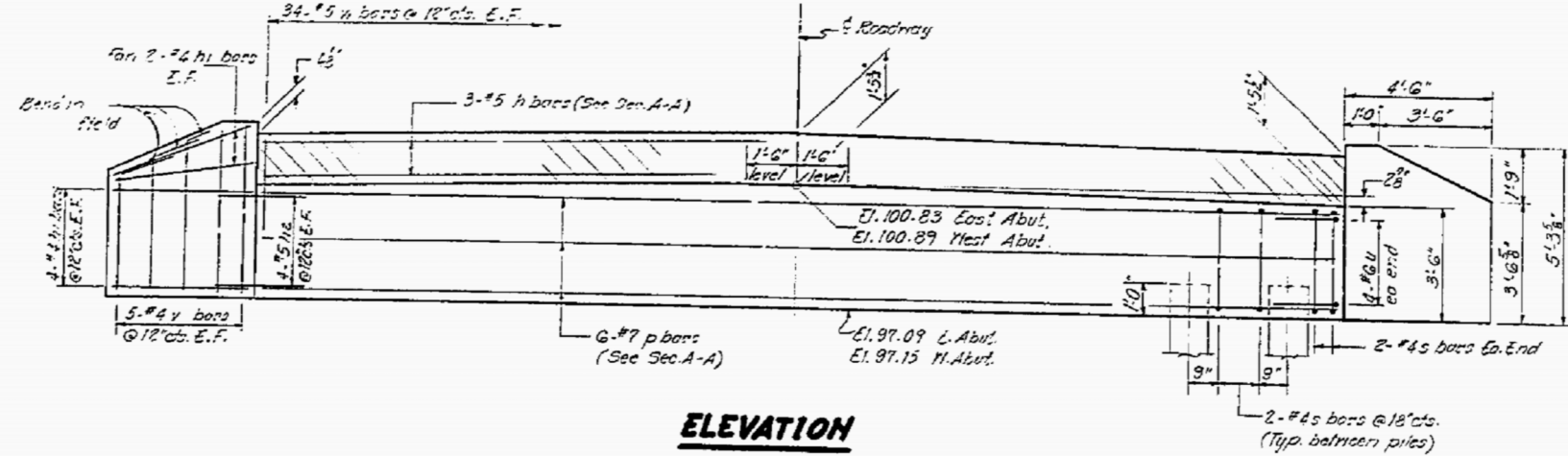


STATE OF ILLINOIS  
DEPARTMENT OF TRANSPORTATION

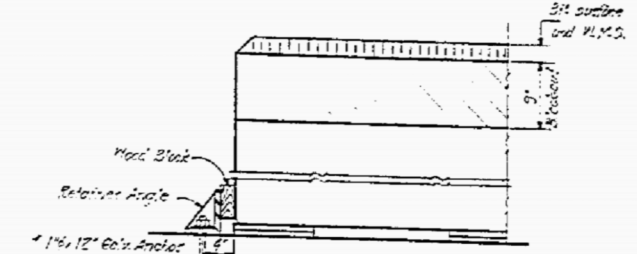
DATE	SECTION	PROJECT	SHEET NO.	TOTAL SHEETS
10/28/02	KANKAKEE	25	15	7



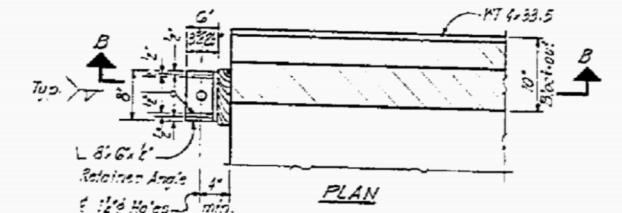
**END VIEW**



**ELEVATION**



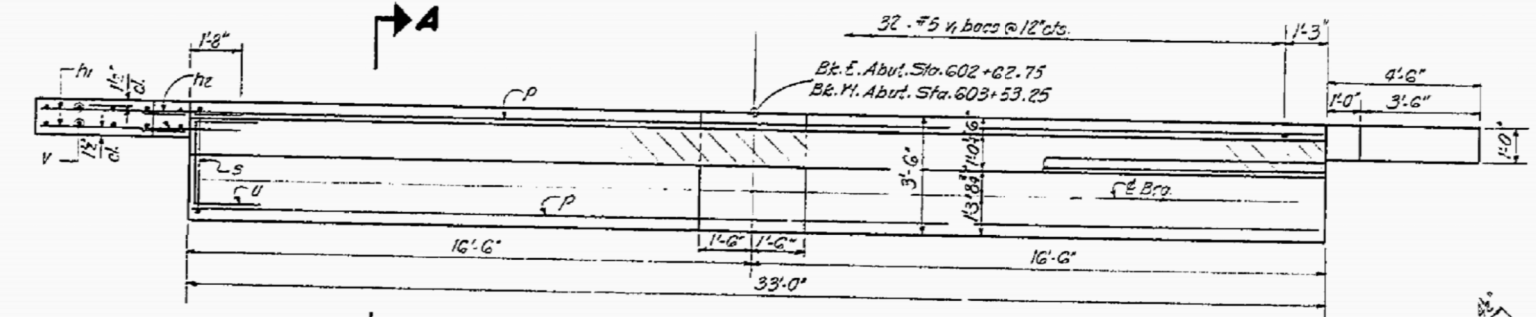
**SEC. B-B**



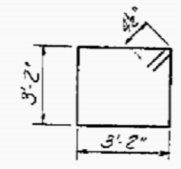
**PLAN**

**RETAINER ANGLE AT EXPANSION JT.**

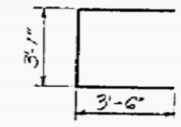
\*Anchor bolts may be cast into the masonry or placed in drilled holes and grouted in place. Cast including Retainer Angle and Accessories Incidental to Beams.  
Note: After block-outs are poured and cured the retainer angles shall be removed. Anchor bolts may be left in place.



**PLAN**



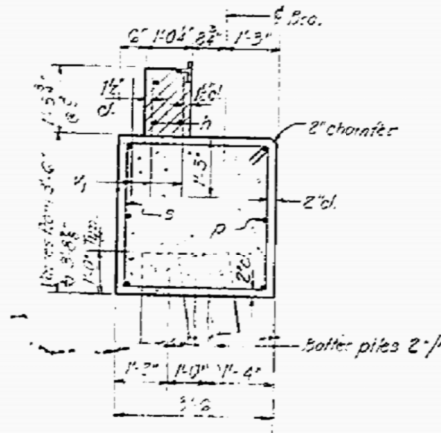
**BAR S**



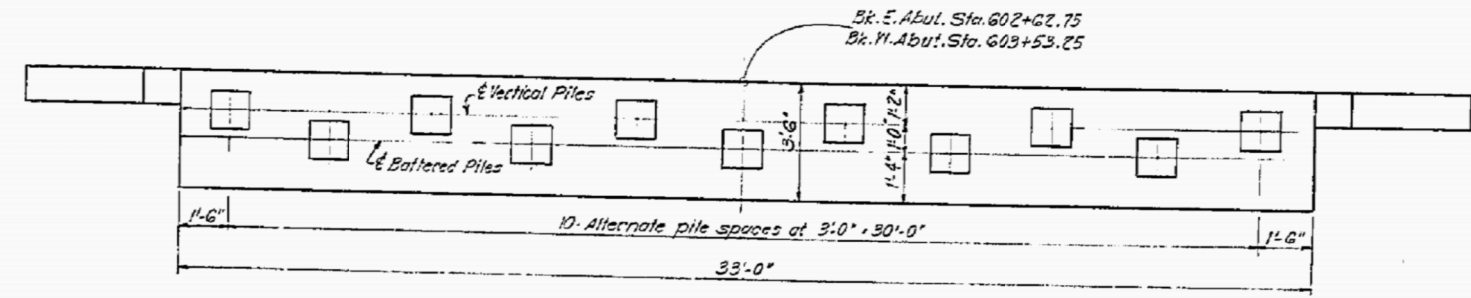
**BAR U**

**PILE DATA**

Type: Concrete  
Capacity: 30 Tons  
Est. Length: 18'-0" East Abut.  
17'-0" West Abut.  
No. Required: East Abut. 10 plus 1 test pile  
West Abut. 11.



**SEC. A-A**



**PILE LAYOUT**

Notes:  
Hatched area shall be poured after beams are in place.  
All edges shall have standard 3/4" chamfers except as noted.

**TWO ABUTMENTS  
BILL OF MATERIAL**

Bar	No.	Size	Length	Shape
h	6	#5	32'-9"	—
h1	48	#4	4'-3"	—
h2	32	#5	3'-4"	—
p	12	#7	32'-9"	—
s	48	#4	13'-5"	□
u	16	#6	10'-1"	□
v	40	#4	5'-0"	—
v1	200	#5	2'-6"	—
Class X Concrete		Cu. Yd.	32.7	
Reinforcement Bars		Pound	2580	
Concrete Piles		Lin. Ft.	367	
Test Pile (Concrete)		Each	1	

**ABUTMENTS  
S.B.I. RT. 115 SEC. 102 BR  
KANKAKEE CO.  
STA. 603+08.00**

DESIGNED: <i>Han 7-11-02</i>	EXAMINED: <i>[Signature]</i> July 22 1020
CHECKED: <i>D.F. Schaub</i>	PASSED: <i>[Signature]</i>
DRAWN: <i>[Signature]</i>	APPROVED: <i>[Signature]</i>
CHECKED: <i>D.F.S.</i>	