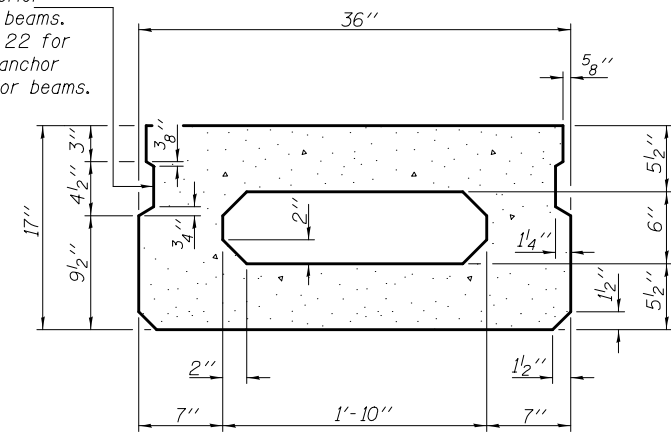
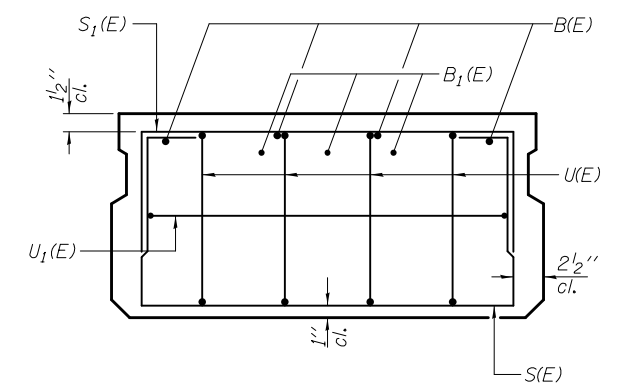


**SECTION A-A**

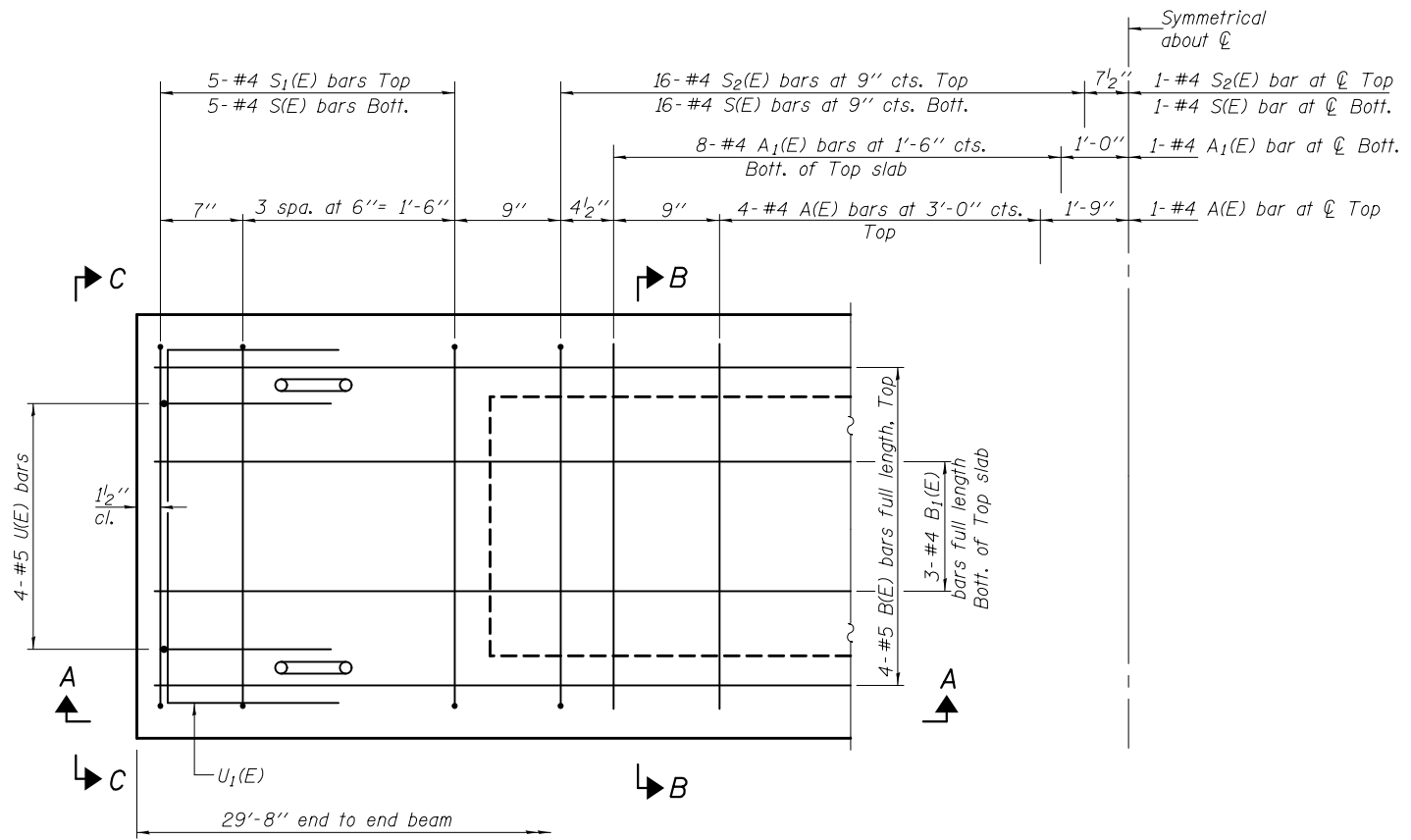
Omit key on exterior face of outside beams. See sheet 4 of 22 for location of rail anchor device on exterior beams.



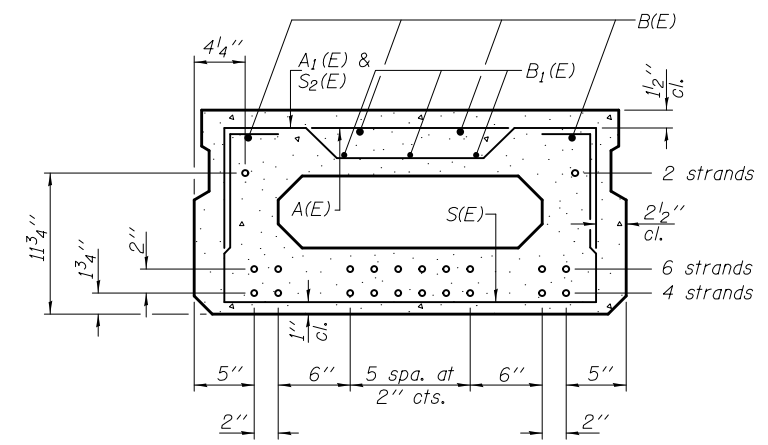
**SECTION B-B**  
(Showing dimensions)



**VIEW C-C**



**PLAN VIEW**



**SECTION B-B**

(Showing reinforcement and permissible strand locations)

Note: Place the number of strands specified in each row symmetrically about the centerline of beam in the permissible strand locations shown.

**BAR LIST**  
**ONE BEAM ONLY**  
(For information only)

Bar	No.	Size	Length	Shape
A(E)	9	#4	2'-7"	—
A1(E)	17	#4	2'-10"	—
B(E)	4	#5	29'-5"	—
B1(E)	3	#4	29'-5"	—
*D(E)	12	#4	2'-9"	□
S(E)	43	#4	5'-9"	□
S1(E)	10	#4	4'-3"	□
S2(E)	33	#4	4'-6"	□
U(E)	8	#5	3'-8"	□
U1(E)	2	#4	5'-0"	□

\*D(E) bars located on exterior face of outside beams only.

**MIN. BAR LAPS**

- #4 bar = 2'-0"
- #5 bar = 2'-6"

Note: Spacing of S(E) and S2(E) bars may be adjusted up to 4" in the immediate area of the transverse tie diaphragms to miss the block outs for the transverse ties.

Note: See sheet 9 of 22 for additional details and Bill of Material. See sheet 3 of 22 for detail of D(E) bar.