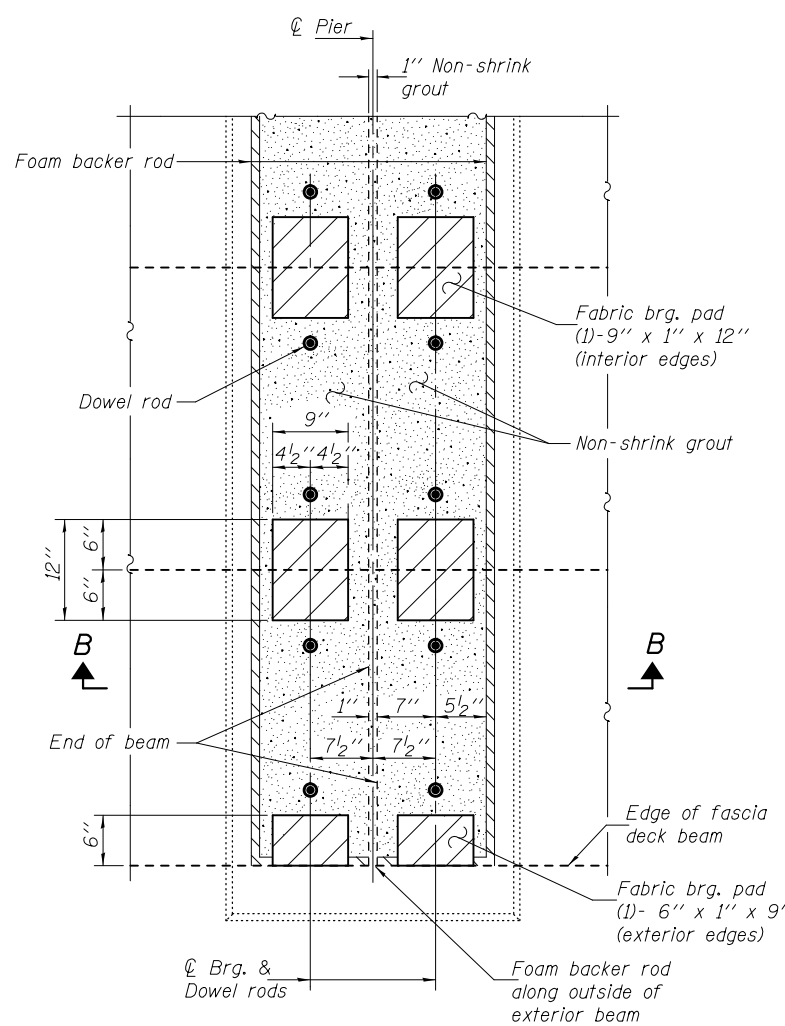
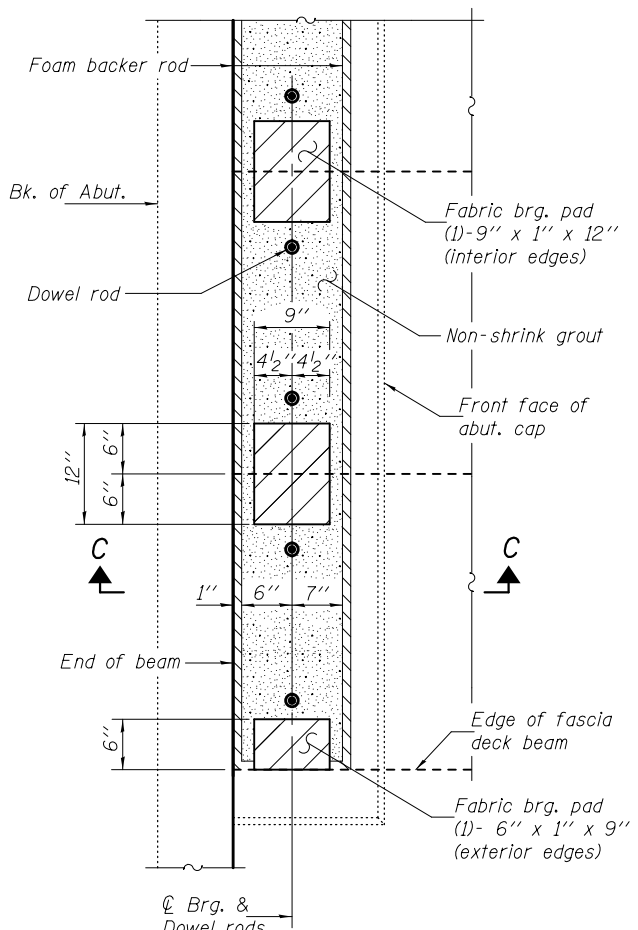


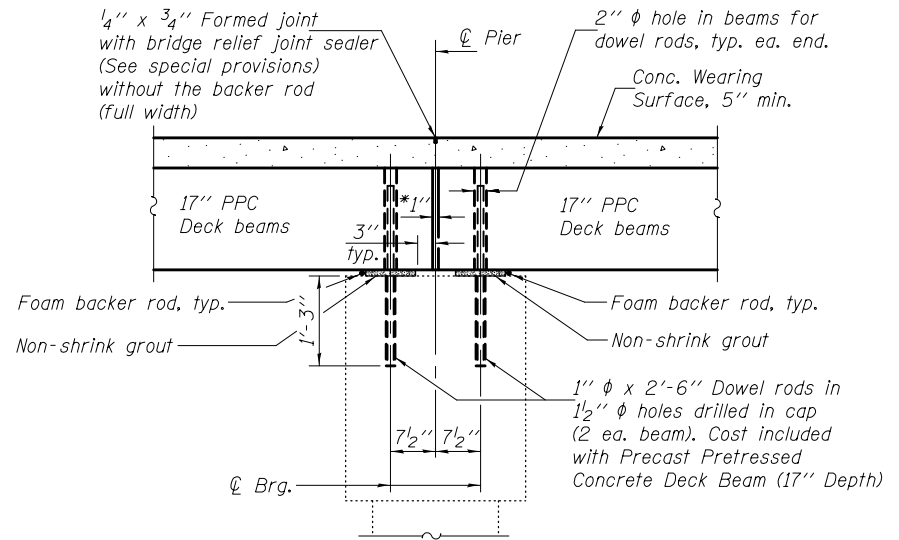
RAIL POST SPACING



PLAN
(At Pier)

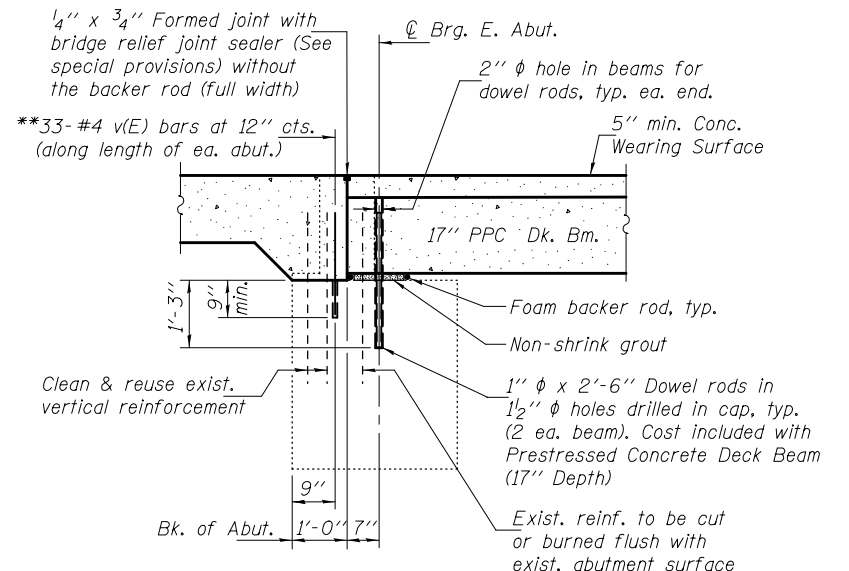


PLAN
(At Abutments)



SECTION B-B

*1" Jt. shall be filled with non-shrink grout. 1" dimension may vary to accommodate tolerance in beam lengths.



SECTION C-C

(West abut. similar by rotation)

**Epoxy grout v(E) bars in 9" min. drilled holes according to Section 584 of the Std. Specs.

Notes: All concrete wearing surfaces shall be placed prior to casting the approach slab. See sheets 9, 11, 13, & 15 of 22 for fabric bearing pad details. Existing vertical reinforcement bars extending into the new construction shall be cleaned, straightened and incorporated into the new construction. Cost included with Removal of Existing Superstructures. Burn existing dowel rods flush with existing abutment and pier surfaces. Cost included with Removal of Existing Superstructures. The bearing seat surfaces shall be adjusted by shimming the bearing to assure firm and even bearing prior to placement of grout. 2 1/8" fabric adjusting shims of the dimensions of the exterior bearing pad shown shall be provided for each bearing.

DESIGNED - Fess Teklehaimanot	EXAMINED - <i>Joanne F. Joffe</i> ACTING ENGINEER OF BRIDGE DESIGN	DATE - OCTOBER 1, 2013	STATE OF ILLINOIS DEPARTMENT OF TRANSPORTATION	SUPERSTRUCTURE DETAILS STRUCTURE NO. 046-0109	F.A.S. RTE.	SECTION	COUNTY	TOTAL SHEETS	SHEET NO.	
CHECKED - Ray Ahanchi	PASSED - <i>Carl Pinger</i> ACTING ENGINEER OF BRIDGES AND STRUCTURES	REVISED			1323	102-BR	KANKAKEE	53	20	
DRAWN - h.t. duong		REVISED			CONTRACT NO. 66B66					
CHECKED - FT/GRA					SHEET NO. 4 OF 22 SHEETS					