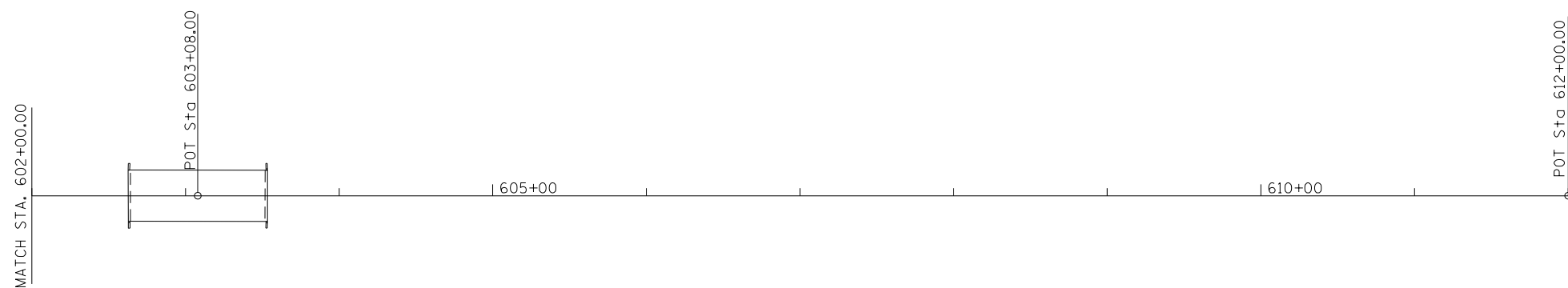
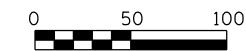


HORIZONTAL CONTROL POINTS				
POINT	NORTHING	EASTING	STATION EXISTING ALIGNMENT	DESCRIPTION
POINT 10	1598866.8430	1042892.9410	588+58.98	POT
CP 115505	1598819.8270	1041964.0670	597+88.80	CONTROL POINT
POINT 12	1598840.2994	1041944.3902	598+07.90	POT
POINT 13	1598826.3104	1041444.4859	603+08	POT
POINT 14	1598801.3591	1040552.8349	612+00	POT



BENCHMARKS						
NO.	NORTHING	EASTING	STATION EXISTING ALIGNMENT	OFFSET EXISTING ALIGNMENT	ELEVATION	DESCRIPTION
CP 115505	1598819.8270	1041964.0670	597+88.80	21.02' LT	646.96	80d SPIKE IN FIELD ENTRANCE (S.E. QUAD)
BM 1	1598802.0130	1041912.2570	598+41.09	37.37' LT	647.05	CHIS SQUARE TOP NORTH EDGE CONC GRAIN BIN FOUNDATION
BM 2	1598867.7940	1041705.2680	600+46.16	34.17' RT	645.43	RAILROAD SPIKE IN POWER POLE
BM 3	1598844.2260	1041488.3320	602+63.67	16.68' RT	648.03	CHIS SQUARE ON TOP NE WINGWALL
			604+43	RT	645.78	RAILROAD SPIKE IN POWER POLE



FILE NAME =	USER NAME = duncanbd	DESIGNED -	REVISED -
c:\pwork\work\pwork\duncanbd\dms68355\EP04404-sh1-ATB.dgn		DRAWN -	REVISED -
Default	PLOT SCALE = 100.0000' / in.	CHECKED -	REVISED -
	PLOT DATE = 8/12/2013	DATE -	REVISED -

**STATE OF ILLINOIS
DEPARTMENT OF TRANSPORTATION**

ALIGNMENT, TIES & BENCHMARKS

SCALE: 1"=50' SHEET 1 OF 2 SHEETS STA. TO STA.

F.A.S. RTE.	SECTION	COUNTY	TOTAL SHEETS	SHEET NO.
1323	102 BR	KANKAKEE	53	10
CONTRACT NO. 66B66				
ILLINOIS FED. AID PROJECT				