

FOR INDEX OF SHEETS, SEE SHEET NO. 2

STATE OF ILLINOIS
DEPARTMENT OF TRANSPORTATION
DIVISION OF HIGHWAYS

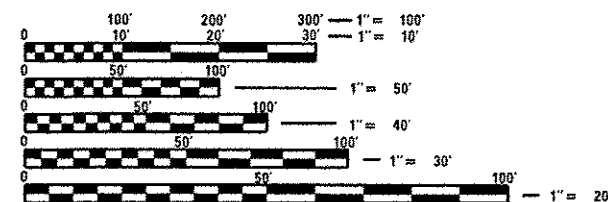
PROPOSED HIGHWAY PLANS

FAI ROUTE 57 (I-57)
SECTION (140)BR, BR-1 & I(1)
PROJECT: ACNHPP-0057(307)
TYPE of IMPROVEMENT: REMOVE & REPLACE
STRUCTURES, APPROACH PAVEMENT WORK
KANKAKEE COUNTY

C-93-027-08

LIST OF ILLINOIS DOT HIGHWAY STANDARDS

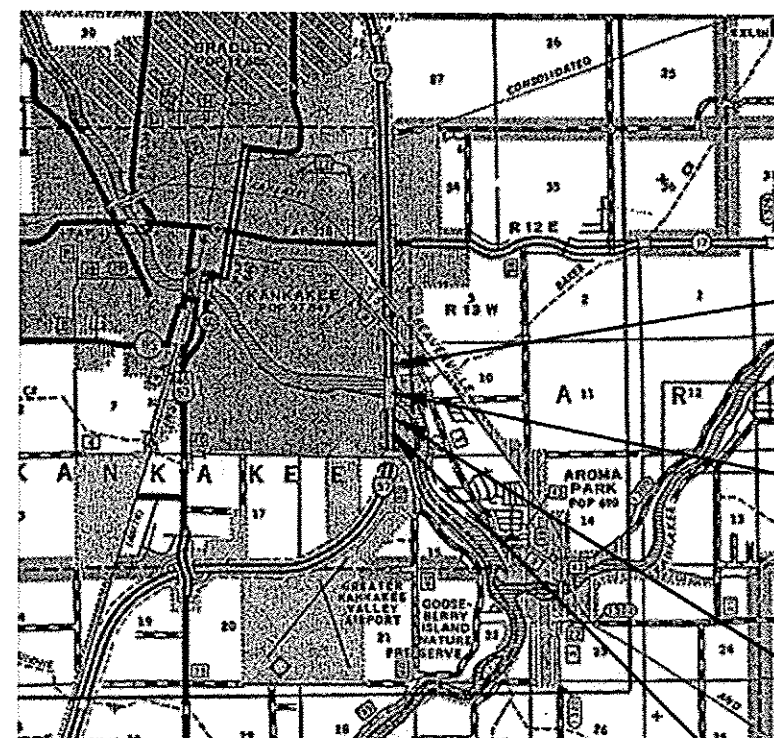
000001-06	STANDARD SYMBOLS, ABBREVIATIONS AND PATTERNS
001001-02	AREAS OF REINFORCEMENT BARS
001006	DECIMAL OF AN INCH AND OF A FOOT
202001-01	EARTH MEDIAN DITCH CHECK
280001-07	TEMPORARY EROSION CONTROL SYSTEMS
442101-07	CLASS B PATCHES
515001-03	NAME PLATE FOR BRIDGES
542401-01	METAL END SECTION FOR PIPE CULVERTS
609006-05	BRIDGE APPROACH PAVEMENT (DRAIN DETAIL)
630001-10	STEEL PLATE BEAM GUARDRAIL
630106-01	LONG-SPAN GUARDRAIL OVER CULVERT
630201-06	PCC/HMA STABILIZATION AT STEEL PLATE BEAM GUARDRAIL
630301-06	SHOULDER WIDENING FOR TYPE 1 (SPECIAL) GUARDRAIL TERMINALS
631011-09	TRAFFIC BARRIER TERMINAL, TYPE 2
631031-11	TRAFFIC BARRIER TERMINAL, TYPE 6
635001-01	DELINEATORS
635006-03	REFLECTOR AND TERMINAL MARKER PLACEMENT
635011-02	REFLECTOR MARKER AND MOUNTING DETAILS
637001-05	CONCRETE BARRIER, DOUBLE FACE, 32 in. (815mm) HEIGHT
637006-03	CONCRETE BARRIER, DOUBLE FACE, 42 in. (1065mm) HEIGHT
638001-02	GLARE SCREEN BLADES
642001-02	SHOULDER RUMBLE STRIPS, 16 INCH
643001-01	SAND MODULE IMPACT ATTENUATORS
664001-02	CHAIN LINK FENCE
665001-02	WOVEN WIRE FENCE
667101-02	PERMANENT SURVEY MARKERS
701400-06	APPROACH TO LANE CLOSURE, FREEWAY/EXPRESSWAY
701401-07	LANE CLOSURE, FREEWAY/EXPRESSWAY
701402-09	LANE CLOSURE, FREEWAY/EXPRESSWAY, WITH BARRIER
701406-07	LANE CLOSURE, FREEWAY/EXPRESSWAY, DAY OPERATIONS ONLY
701901-02	TRAFFIC CONTROL DEVICES
704001-07	TEMPORARY CONCRETE BARRIER
780001-03	TYPICAL PAVEMENT MARKINGS
781001-03	TYPICAL APPLICATIONS RAISED REFLECTIVE PAVEMENT MARKERS
825001-01	LIGHTING CONTROLLER, POLE MOUNTED, 240V
830026	TEMPORARY ROADWAY LIGHTING



FULL SIZE PLANS HAVE BEEN PREPARED USING STANDARD
ENGINEERING SCALES. REDUCED SIZED PLANS WILL NOT
CONFORM TO STANDARD SCALES. IN MAKING MEASUREMENTS
ON REDUCED PLANS, THE ABOVE SCALES MAY BE USED.

J.U.L.I.E.
JOINT UTILITY LOCATION INFORMATION FOR EXCAVATION
1-800-892-0123
OR 811

PROJECT ENGINEER - CRAIG REED, P.E.
UNIT CHIEF - PAT BRABOY, P.E.
KANKAKEE TOWNSHIP
CONTRACT NO. 66750



STA. 235+04 PROJECT BEGINS

S.N. 046-0003 (I-57 NB) &
S.N. 046-0004 (I-57 SB) EXISTING
STRUCTURES TO BE REPLACED
WITH S.N. 046-0135 (I-57 NB) &
S.N. 046-0136 (I-57 SB)

REMOVE AND REPLACE EXISTING
PEDESTRIAN CULVERT EXIST SN 046-2543
PROP SN 046-2552

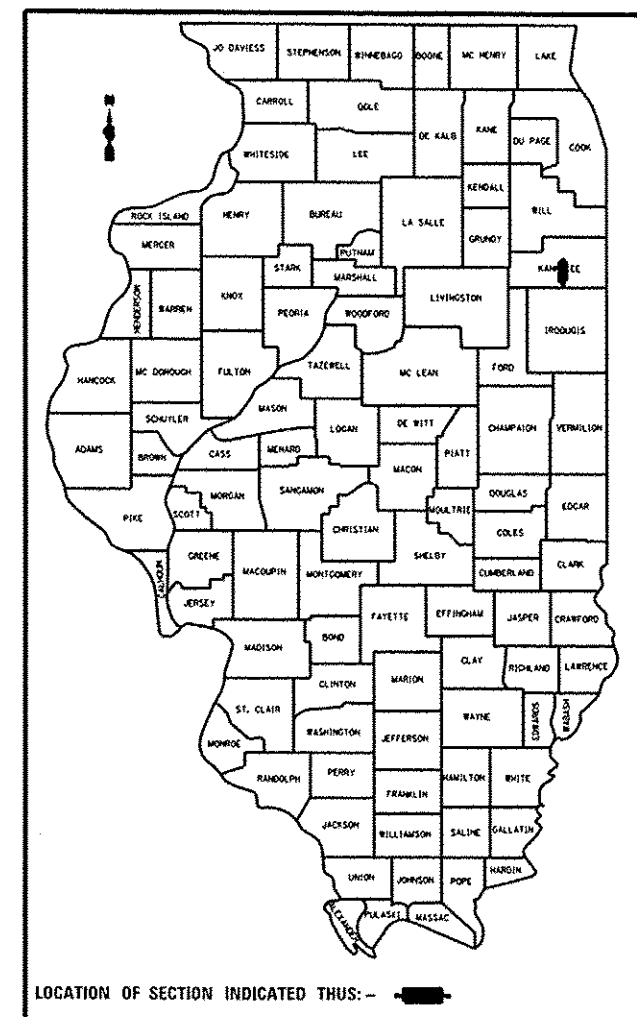
STA. 280+72 PROJECT ENDS

GROSS LENGTH = 4568.0 FT. = 0.87 MILE
NET LENGTH = 4568.0 FT. = 0.87 MILE

FAI ROUTE	SECTION	COUNTY	TOTAL SHEETS	SHEET NO.
57	(140)BR, BR-1 & I(1)	KANKAKEE	183	1
CONTRACT NO. 66750				

D-93-014-08
P-93-029-02

*183-1=182



LOCATION OF SECTION INDICATED THUS: -

FUNCTIONAL CLASSIFICATION

FAI INTERSTATE

2012 ADT = 21500

PV = 70.4% SU = 3.1% MU = 26.5%

STATE OF ILLINOIS
DEPARTMENT OF TRANSPORTATION
DIVISION OF HIGHWAYS

SUBMITTED 8/22/13
Paul A. Lusk
DEPUTY DIRECTOR OF HIGHWAYS, REGION ENGINEER
October 4, 2013
John D. Baranowski, P.E.
ENGINEER OF DESIGN AND ENVIRONMENT
October 4, 2013
Omer Osman, P.E.
DIRECTOR OF HIGHWAYS, CHIEF ENGINEER

PRINTED BY THE AUTHORITY
OF THE STATE OF ILLINOIS

Rev. 10-29-13

GENERAL NOTES

THE THICKNESS OF HMA SHOWN ON THE PLANS IS THE NOMINAL THICKNESS. DEVIATIONS FROM THE NOMINAL THICKNESS WILL BE PERMITTED WHEN SUCH DEVIATIONS OCCUR DUE TO IRREGULARITIES IN THE EXISTING SURFACE OR BASE ON WHICH THE HMA IS PLACED.

EXCEPT AS NOTED ON THE PLANS, PAVEMENT GRADES SHOWN ARE AT THE TOP OF PAVEMENT SURFACES.

BEFORE ORDERING PIPE CULVERTS OR PIPE DRAINS, THE CONTRACTOR SHALL CONSULT THE ENGINEER FOR EXACT LENGTHS.

THE ENGINEER WILL BE THE SOLE JUDGE CONCERNING CURING TIME FOR THE VARIOUS HMA LIFTS.

FOR STABILIZATION, ALL TYPE III BARRICADES WILL REQUIRE A MINIMUM OF FOUR SAND BAGS PER BARRICADE.

SEEDING WILL NOT BE PERMITTED AT ANY TIME WHEN THE GROUND IS FROZEN, WET, OR IN AN UNTILLABLE CONDITION. LOCATIONS TO BE SEEDED WILL BE DETERMINED BY THE ENGINEER.

ONLY THOSE TREES DESIGNATED BY THE ENGINEER OR LISTED IN THE TREE REMOVAL SCHEDULE SHALL BE REMOVED. THE CONTRACTOR SHALL PROTECT ALL REMAINING TREES FROM DAMAGE DUE TO HIS OPERATIONS.

THE FINISHED EARTHWORK SHALL HAVE A VEGETATION SUSTAINING SOIL COVERING THE TOP FOUR INCHES (100 MILLIMETERS) IN AREAS TO BE SEEDED OR SODDED. THE VEGETATION SUSTAINING SOIL REQUIRED WILL NOT BE PAID FOR SEPARATELY BUT WILL BE INCLUDED IN THE COST OF FURNISHED EXCAVATION

ALL ELEVATIONS REFERRING TO U.S.G.S. MEAN SEA LEVEL DATUM.

ABANDONED UNDERGROUND UTILITIES THAT CONFLICT WITH CONSTRUCTION SHALL BE DISPOSED OF OUTSIDE THE LIMITS OF THE RIGHT OF WAY ACCORDING TO ARTICLE 202.03 OF THE STANDARD SPECIFICATIONS AND AS DIRECTED BY THE ENGINEER. THIS WORK WILL NOT BE PAID FOR SEPARATELY, BUT WILL BE INCLUDED IN THE COST OF EARTH EXCAVATION.

ANY REFERENCE TO A STANDARD IN THESE PLANS SHALL BE INTERPRETED TO MEAN THE EDITION AS INDICATED BY THE SUBNUMBER SHOWN IN THE LIST OF STANDARDS OR THE COPY INCLUDED IN THESE PLANS.

THE FOLLOWING RATES OF APPLICATION HAVE BEEN USED IN CALCULATING PLAN QUANTITIES:

GRANULAR MATERIALS	2.05	TONS / CU YD
HMA RESURFACING	112	LBS / SQ YD / IN
SHORT TERM PAVEMENT MARKING	10	FT /100 FT OF APPLICATION
MIX FOR CRACKS, JTS & FLGWYS	0.0003	TONS / SQ YD
LEVEL BINDER (HAND METHOD)	0.0005	TONS / SQ YD
SUPPLEMENTAL WATERING	3	GAL / SQ YD / APPLICATION
CALCIUM CHLORIDE	2	LB / SQ YD / APPLICATION
AGGREGATE DITCH CHECKS	5	TONS AGGREGATE

ALL DAMAGE TO DEPARTMENT OWNED UNDERGROUND FACILITIES, CAUSED BY THE CONTRACTOR SHALL BE REPAIRED TO THE SATISFACTION OF THE DEPARTMENT AT THE CONTRACTOR'S EXPENSE. THIS SHALL INCLUDE ALL TEMPORARY REPAIRS REQUIRED TO KEEP THE FACILITY OPERATIONAL WHILE MATERIAL IS BEING OBTAINED TO MAKE PERMANENT REPAIRS. SPLICING OF ELECTRIC CABLE WILL NOT BE ALLOWED. ELECTRIC CABLE SHALL BE REPLACED FROM POLE TO POLE OR CONTROLLER.

THE WORK REQUIRED TO CONNECT ANY SEWER TO AN EXISTING DRAINAGE STRUCTURE OR PIPE WILL NOT BE PAID FOR SEPARATELY, BUT WILL BE CONSIDERED AS INCLUDED IN THE CONTRACT UNIT PRICE BID FOR THE SEWER ITEMS.

THE CONTRACTOR SHALL CONTACT JULIE AT LEAST 48 HOURS PRIOR TO EXCAVATION TO DETERMINE WHICH UTILITIES ARE IN THE AREA.



STA. 235+04 BEGIN
PROJECT N. END
OF CROSSOVER

EXIST S.N. 046-0004
PROP SN 046-0136
1-57 SB

EXIST S.N. 046-0003
PROP SN 046-0135
1-57 NB

STA. 267+00 REM & REPL
BOX CULVERT EXIST SN 046-2543
PROP SN 046-2552

STA. 281+82 END
PROJECT S. END
OF CROSSOVER

LOCATION MAP

COMMITMENTS:

- 1) ENVIRONMENTAL COORDINATION
- 2) CONTRACTOR TO CLOSE BOX CULVERT NO MORE THAN 45 CALENDAR DAYS DURING STAGE 1 AND 45 CALENDAR DAYS DURING STAGE 2. SEE SPECIAL PROVISIONS.

3. STORM WATER POLLUTION PROTECTION PLAN

4. NOI PERMIT

5. R.E. TO CONTACT OPERATIONS AT THE COMPLETION OF PROJECT TO BEGIN NEW BILLING OF PEDESTRIAN LIGHTING

6. 404 PERMIT

7. STRUCTURE STATUS AND VERTICAL CLEARANCE FORMS

8. LIST OF NON-MOWABLE AREAS

9. EXECUTED PARK DISTRICT-STATE AGREEMENT

10. KANKAKEE RIVER CHANNEL DEPTHS

INDEX

1	COVER SHEET
2	GENERAL NOTES & LOCATION
3-13	SUMMARY OF QUANTITIES
14	TYPICAL SECTIONS
15-21	SCHEDULES
22	TIE POINTS
23-31	PLAN & PROFILE SHEETS
32	STAGE I CONSTRUCTION TYPICAL SECTIONS
33-34	STAGE I TRAFFIC CONTROL
35	STAGE II CONSTRUCTION TYPICAL SECTIONS
36-37	STAGE II TRAFFIC CONTROL
38	EROSION CONTROL
39	ALTERNATE ROUTE SIGNING
40	TEMPORARY LIGHTING
41-119	BRIDGE PLANS FOR S.N. 046-0135 & S.N. 046-0136
120-128	STRUCTURE PLANS FOR PEDESTRIAN CULVERT S.N. 046-2552
129-135	LIGHTING DETAILS FOR PEDESTRIAN CULVERT S.N. 046-2552
136-159	EXISTING BRIDGE PLANS FOR S.N. 046-0003 & S.N. 046-0004
160-168	DETAILS
169-183	CROSS SECTIONS

* 135 - DELETED

MIXTURES TABLE					
	POLY HMA SURFACE	POLY HMA BINDER AND BSE CSE	HMA SURF (10' SHLD TOP 2")	HMA SHLDS 10" & BINDER	HMA SHLDS 6"
PG GRADE	SBS PG 70-22	SBS PG 70-22	PG 64-22	PG 64-22	PG 64-22
DESIGN AIR VOIDS	4.0% @ N90	4.0% @ N90	4.0% @ N50	4.0% @ N50	2.0% @ N30
MIXTURE COMPOSITION	IL 9.5	IL 19.0 FG	IL 9.5	IL 19.0	OTHER
FRICTION AGGREGATE	MIXTURE D		MIXTURE C		
DENSITY TEST METHOD	CORES/ COORELATION	CORES/ COORELATION	CORES/ COORELATION	CORES	SATISFACTION OF ENGINEER

STATE OF ILLINOIS DEPARTMENT OF TRANSPORTATION DISTRICT THREE

PREPARED BY: Dan Beomil
DISTRICT STUDIES & PLANS ENGINEER

DATE: 8-21-13

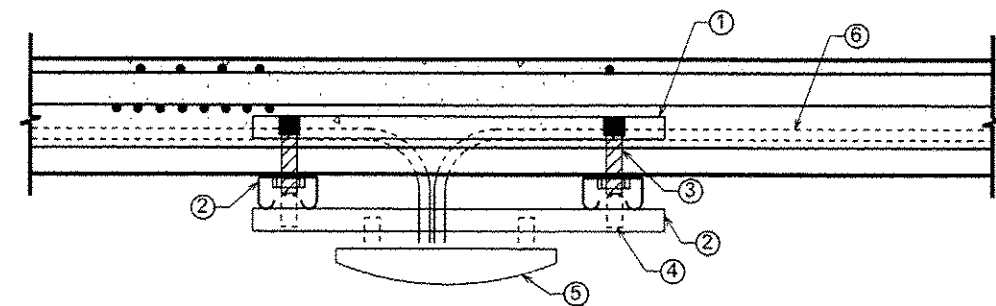
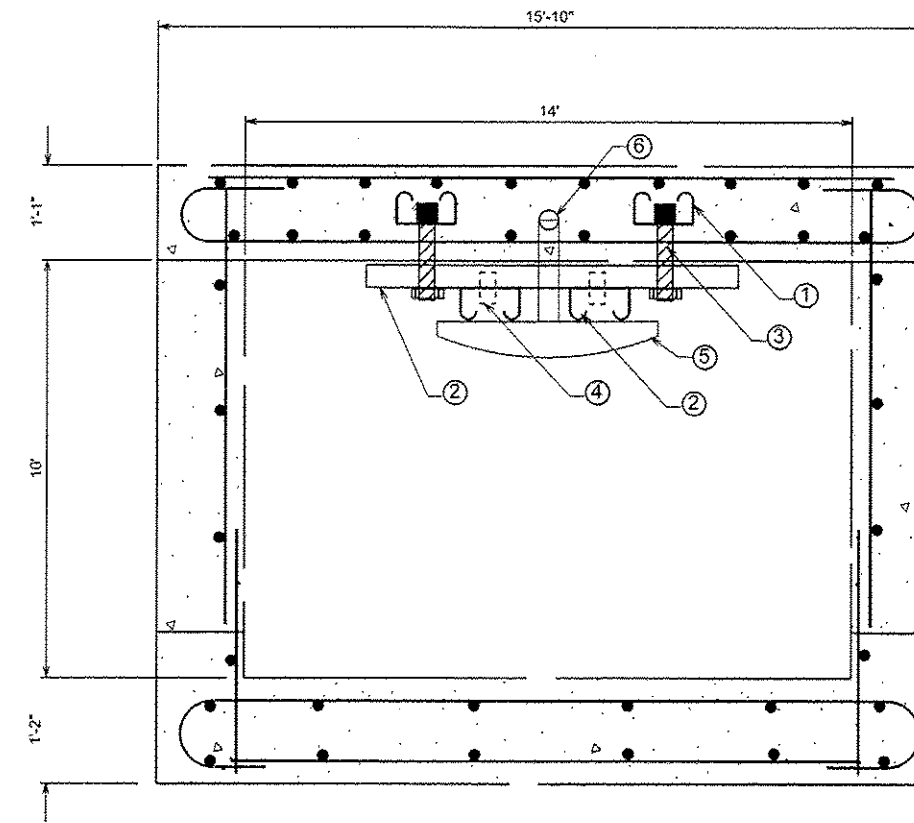
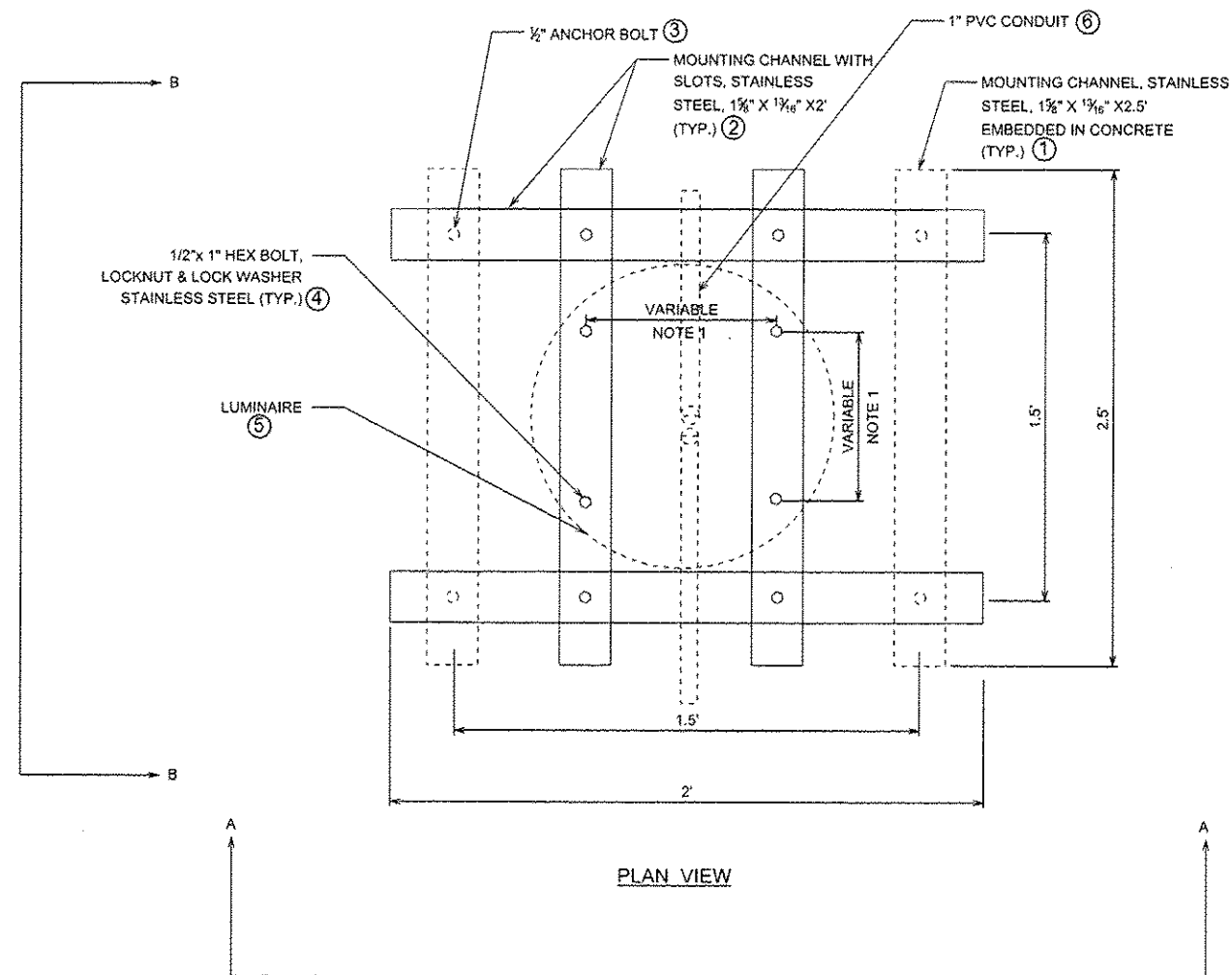
EXAMINED BY: Hubert J. [Signature]
DISTRICT CONSTRUCTION ENGINEER

Wanda [Signature]
DISTRICT MATERIALS ENGINEER

[Signature]
DISTRICT OPERATIONS ENGINEER

Rev. 10-19-13

FILE NAME *	USER NAME * USER#	DESIGNED -	REVISED -	STATE OF ILLINOIS DEPARTMENT OF TRANSPORTATION		GENERAL NOTES & LOCATION MAP		F.A.I. RTE.			
*FILE#		DRAWN -	REVISED -					57	(140)BR, BR-1 & II)	KANKAKEE	TOTAL SHEETS 183
MODELNAME		CHECKED -	REVISED -								SHEET NO. 2
		DATE -	REVISED -								CONTRACT NO. 66750
				SCALE: _____		SHEET _____ OF _____ SHEETS		STA. _____ TO STA. _____		ILLINOIS FED. AID PROJECT	

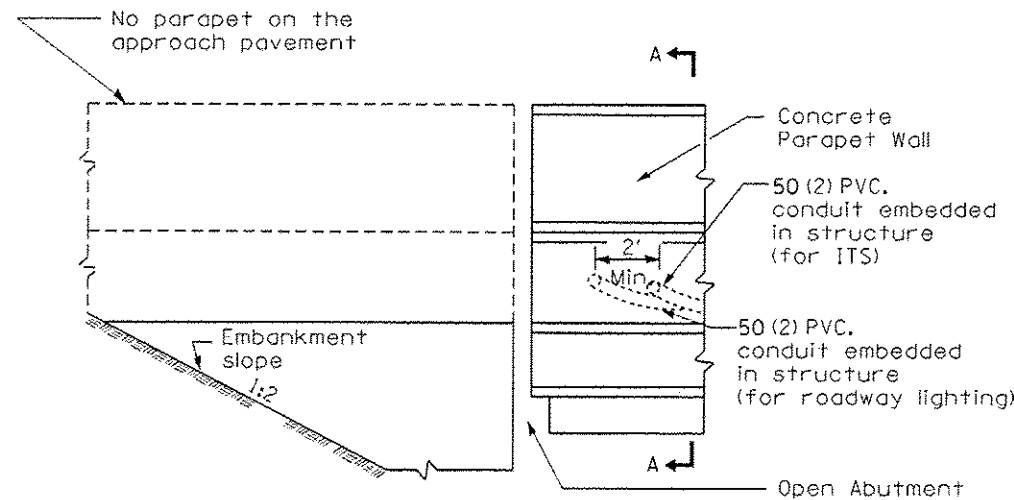


NOTE:
1. THE DISTANCE AS PER LUMINAIRE MANUFACTURE RECOMMENDATION.

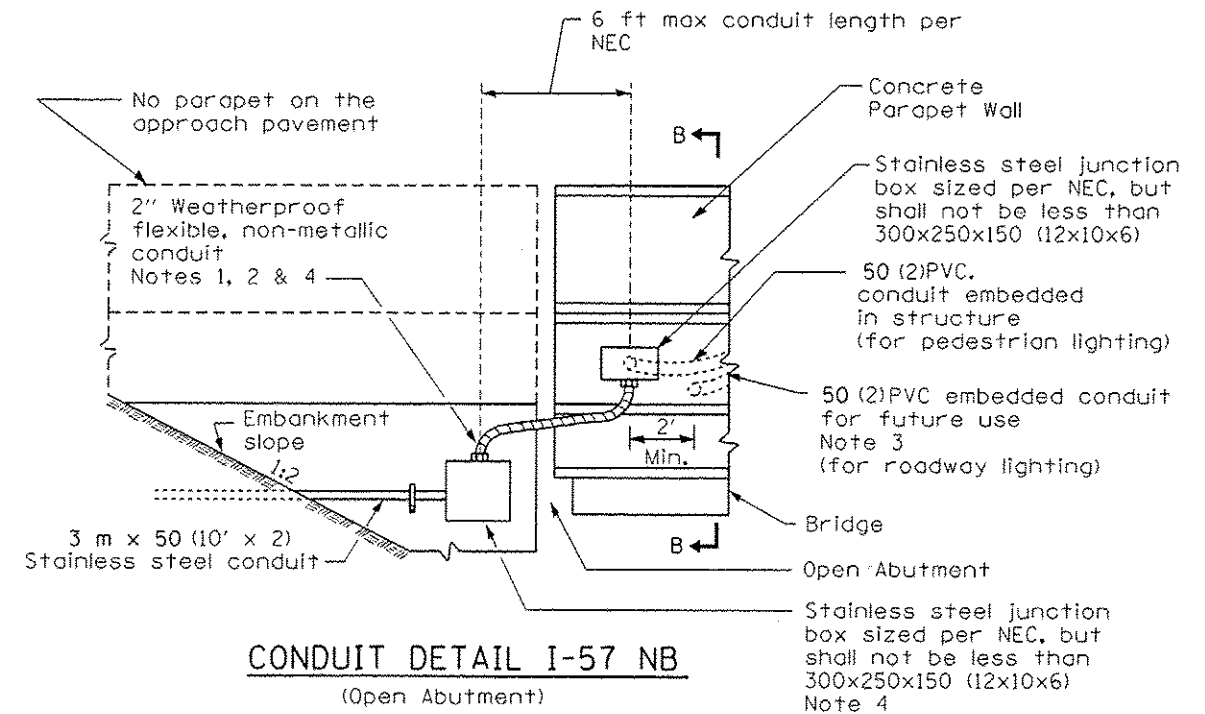
LUMINAIRE MOUNTING DETAILS
NOT TO SCALE

Rev. 10-29-13

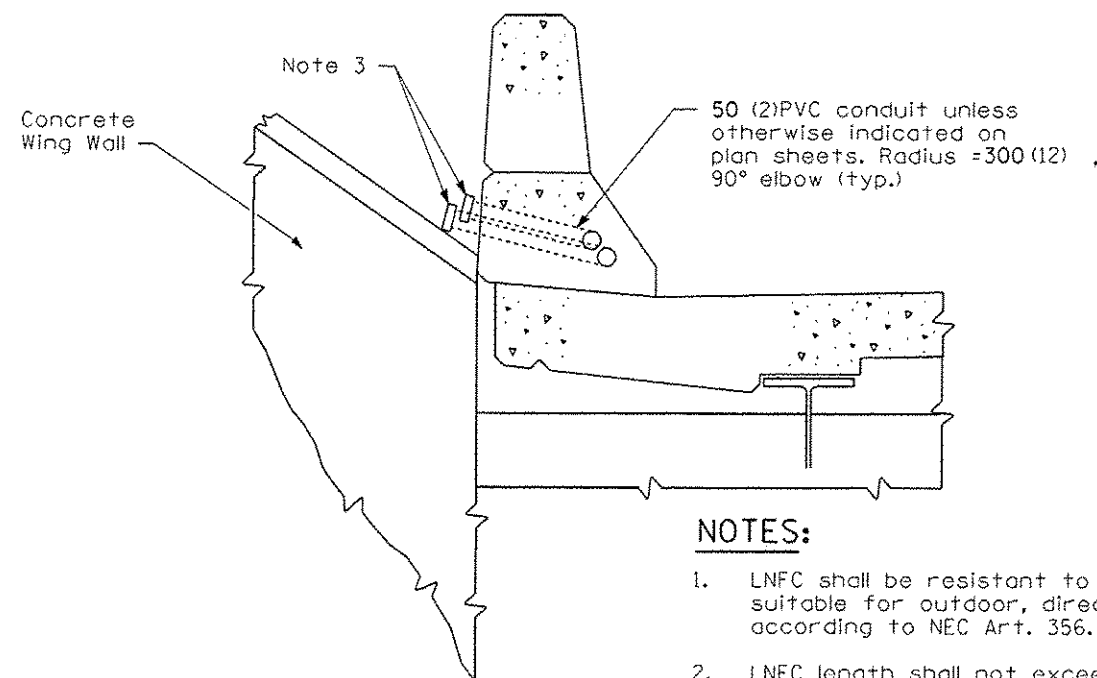
FILE NAME =	USER NAME = rpatel	DESIGNED -	REVISED -	STATE OF ILLINOIS DEPARTMENT OF TRANSPORTATION	WALKWAY UNDER I-57 LUMINAIRE MOUNTING DETAILS		F.A. RTE.	SECTION	COUNTY	TOTAL SHEETS	SHEET NO.
EtProject\I-57 Walkway\CA00 file\0366799-Sht-light-02.dgn		DRAWN -	REVISED -				57	(140)BR, BR-1 & (1)	KANKAKEE	183	130
PLOT SCALE = 5/8"=1'		CHECKED -	REVISED -				CONTRACT NO. 66750				
Default	PLOT DATE = 22-AUG-2013 14:48	DATE -	REVISED -		SCALE: _____ SHEET _____ OF _____ SHEETS STA. _____ TO STA. _____		ILLINOIS FED. AID PROJECT				



CONDUIT DETAIL I-57 SB
(Open Abutment)



CONDUIT DETAIL I-57 NB
(Open Abutment)

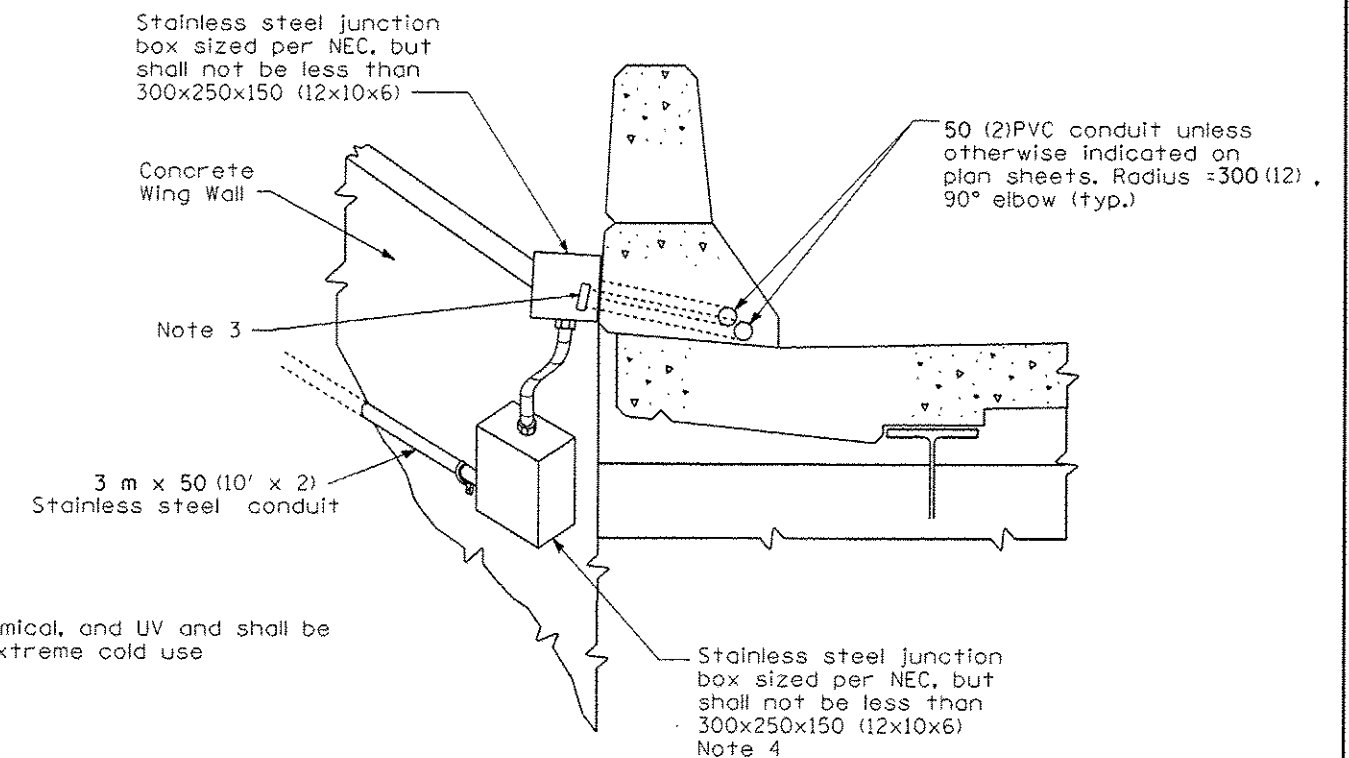


SECTION A-A

DETAIL "A"

NOTES:

1. LNFC shall be resistant to oil, water, chemical, and UV and shall be suitable for outdoor, direct bury, and extreme cold use according to NEC Art. 356.
2. LNFC length shall not exceed 6'.
3. Contractor shall provide threaded cap at each conduit end and pull rope in each empty conduit. Extend conduit out of concrete just enough to cap.
4. The 2" stainless steel conduit and 2" LNFC shall not be measured for payment but shall be included in cost of each "Junction box, stainless steel, attached to structure, 12"x10"x6".



SECTION B-B

DETAIL "B"

FILE NAME =	USER NAME = rpatel	DESIGNED -	REVISED -	STATE OF ILLINOIS DEPARTMENT OF TRANSPORTATION	LIGHT POLE FOUNDATIONS AND CONDUIT IN BRIDGE PARAPET	F.A. RTE.				SECTION	COUNTY	TOTAL SHEETS	SHEET NO.
EnProject\I-57 Walkway\CADD File\03667	0-Sht-light-06.dgn	DRAWN -	REVISED -			57	(140)BR, BR-1 & (11)	KANKAKEE	183	134			
Default	PLOT SCALE = 0.012706H	CHECKED -	REVISED -			CONTRACT NO. 66750							
	PLOT DATE = 22-AUG-2013 14:46	DATE -	REVISED -			ILLINOIS FED. AID PROJECT							

Rev. 10-29-13