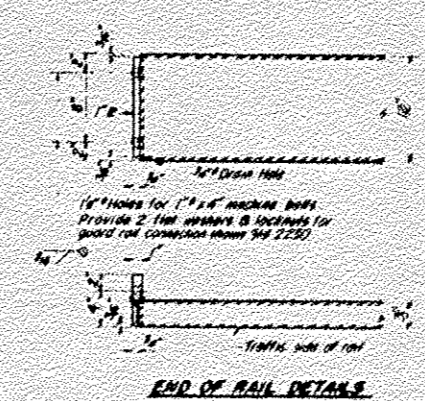
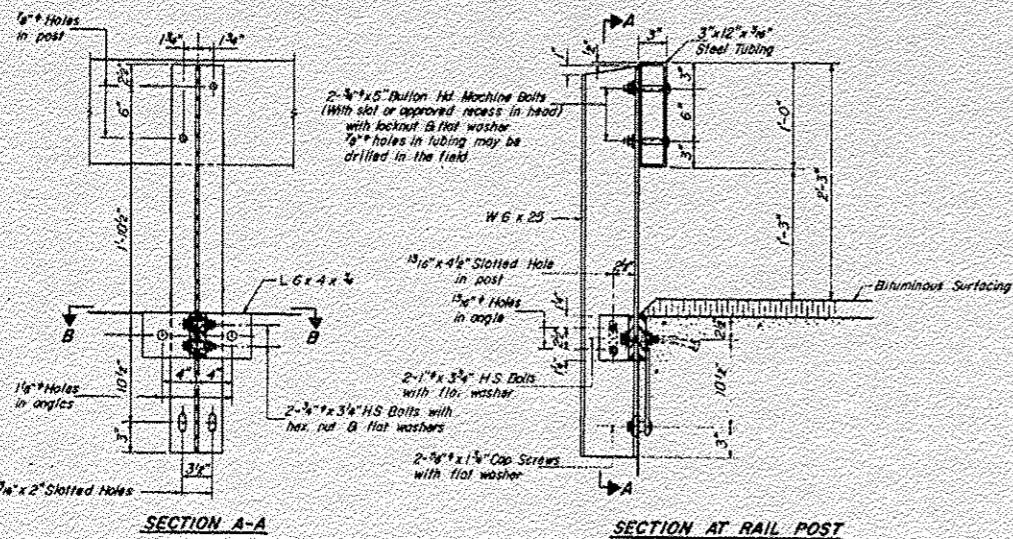
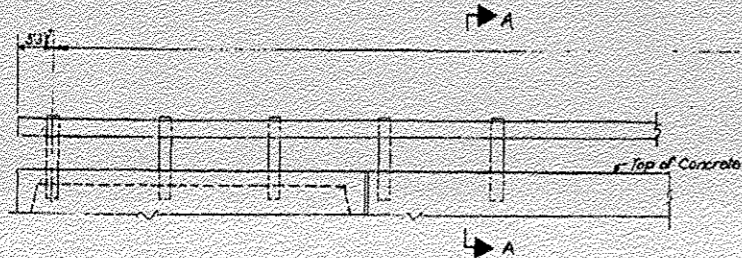


# EXISTING STRUCTURE PLANS (FOR REFERENCE ONLY)

STATE OF ILLINOIS  
DEPARTMENT OF TRANSPORTATION

DATE	DESIGNED	CHECKED	DRAWN	SCALE	SHEET NO.
U.S. 2011	J. HENRY	A	7	5	5 SHEETS



**NOTES**

Follow structural steel tubing shall conform to the requirements of ASTM designation A-500 Grade B or A-501 Structural Steel Tubing.

All other steel shapes and plates shall conform to the requirements of ASTM designation A-36 except posts shall conform to ASTM A-441.

Bolts, cap screws, and nuts shall conform to the requirement of ASTM designation A-307 except for high strength bolts, nuts and washers noted which shall conform to ASTM designation A-325.

All bolts, nuts, cap screws, washers and lock washers shall be galvanized in accordance with ASTM designation A-153.

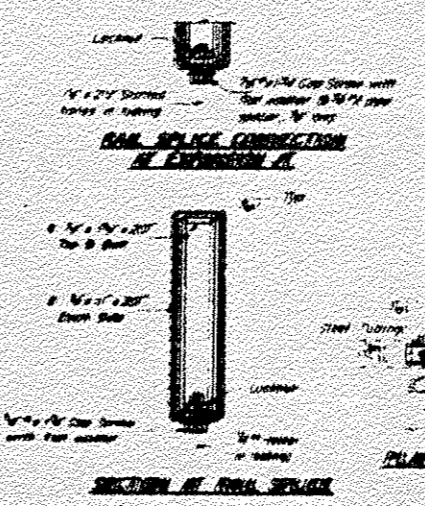
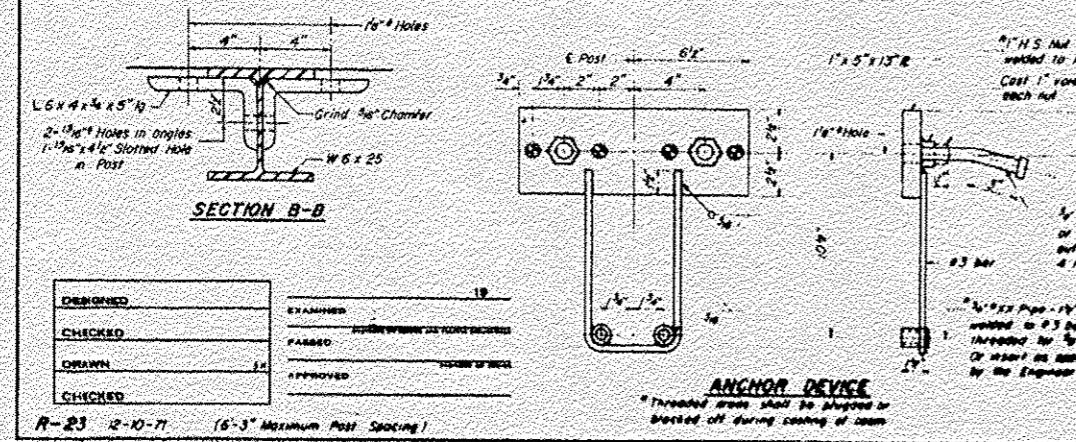
All posts, railings, rail spikes, anchor devices and angles shall be galvanized other than fabrication in accordance with ASTM designation A-123 and A-305. Galvanized rail shall not be painted.

Painting shall be in accordance with Section 508 of the Standard Specifications, except as noted, and shall be paid for at the contract unit price per linear foot for STEEL RAILING, TYPE S.

All field drilled holes shall be coated with an approved zinc rich paint before erection.

The lower portion of the post flange in contact with concrete shall receive two coats of asphalt paint conforming to Section 714.08 Type B or place 1/2" fabric (sealing joint) between the post and concrete.

The 5/8" high strength bolts used to connect the 6 x 4 x 1/2" angles to the post shall be tightened in accordance with Article 902.04(a)(3) of the Standard Specifications. The 1" high strength bolts connecting the angles to the concrete shall be tightened to a snug fit and given an additional 1/2 turn.



**BILL OF MATERIAL**

Item	Unit	Quantity
Steel Railing, Type S	Lin Ft	10

**TYPE S STEEL RAILING**

S&L P. 7, SEC. 5.01  
HENRY COUNTY  
7A-477-86

DESIGNED	EXAMINED	19
CHECKED	DRAWN	
DRAWN	APPROVED	
CHECKED		

R-23 12-10-71 (6'-3" Maximum Post Spacing)

STATE OF ILLINOIS  
DEPARTMENT OF TRANSPORTATION

EXISTING STRUCTURE PLANS

F.A.S. RTE.	SECTION	COUNTY	TOTAL SHEETS	SHEET NO.
226	3T & 3BR-1	HENRY	210	59
CONTRACT NO. 64F25				

FILE NAME	USER NAME	DESIGNED	REVISED
01\pwwork\pwwork\d0169186\0228809-struct-details.dgn	cushmanbw	-	-
PLOT SCALE	CHECKED	REVISOR	REVISION
1" = 20.0000'	-	-	-
PLOT DATE	DATE	REVISOR	REVISION
Fri Oct 19 12:51:23 2012	-	-	-

SCALE: SHEET OF SHEETS STA. TO STA.

[ILLINOIS] FED. AID PROJECT