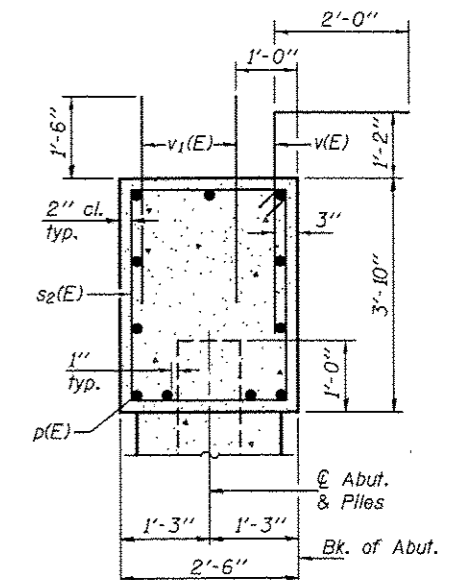
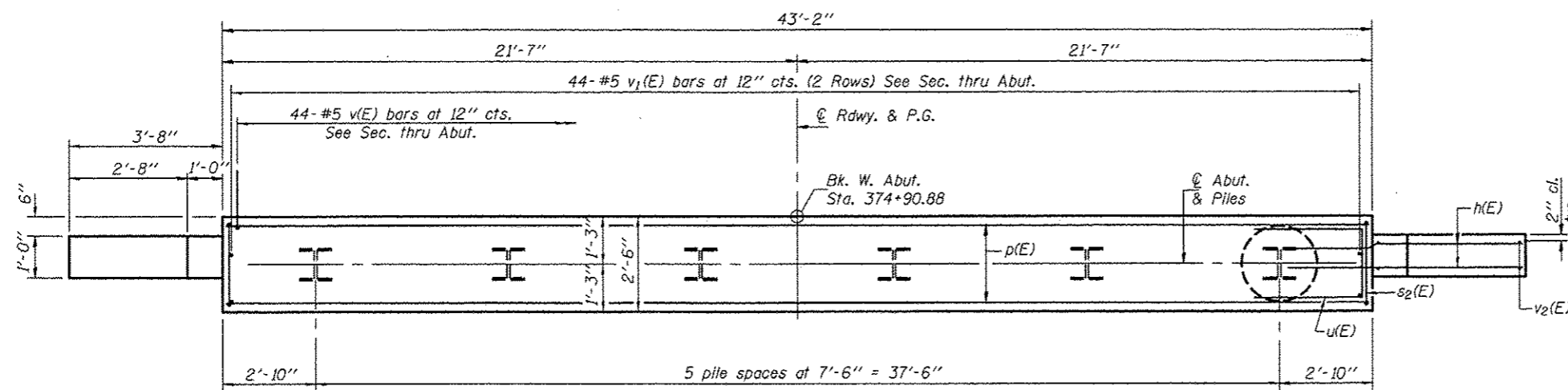


ELEVATION
(Looking West)



SEC. THRU ABUT.



PLAN

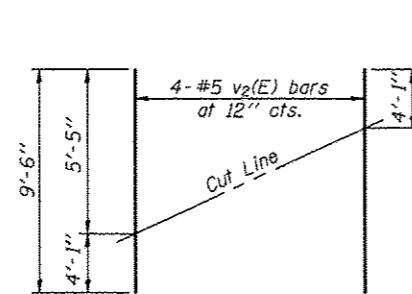
BILL OF MATERIAL

Bar	No.	Size	Length	Shape
n(E)	32	#5	6'-0"	—
p(E)	11	#8	42'-10"	—
s2(E)	41	#4	12'-1"	□
u(E)	8	#6	8'-1"	—
v(E)	44	#5	4'-8"	—
v1(E)	88	#5	3'-0"	—
v2(E)	8	#5	9'-6"	—
Structure Excavation		Cu. Yd.	28.1	
Concrete Structures		Cu. Yd.	16.8	
Reinforcement Bars, Epoxy Coated		Pound	2460	
Furnishing Steel Piles HP12x53		Foot	135	
Driving Piles		Foot	135	
Test Pile Steel HP12x53		Each	1	
Concrete Encasement		Cu. Yd.	2.1	

For details of piles and concrete encasement, see sheet 14 of 15.

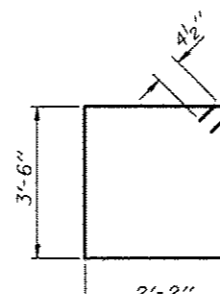
PILE DATA

Type: Steel HP12x53
 Nominal Required Bearing: 419 Kips
 Factored Resistance Available: 230 Kips
 Est. Length: 27'
 No. Production Piles: 5
 No. Test Piles: 1

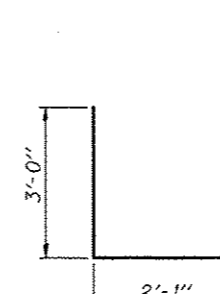


FIELD CUTTING DIAGRAM

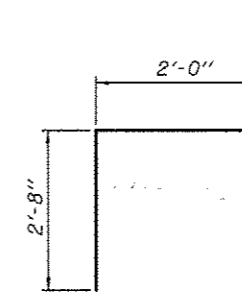
Order v2(E) full length. Cut as shown and use remainder of bars in opposite face.



BAR s2(E)



BAR u(E)



BAR v(E)

DESIGNED - FESSEHA TEKLEHAIMANOT	EXAMINED - <i>Jayne F. Joffe</i>	DATE - December 4, 2012
CHECKED - STEPHEN M. RYAN	ACTING ENGINEER OF BRIDGE DESIGN	
DRAWN - h.t. duong	PASSED - <i>Carl Kasper</i>	REVISED
CHECKED - GRA/FT	ACTING ENGINEER OF BRIDGES AND STRUCTURES	REVISED

STATE OF ILLINOIS
 DEPARTMENT OF TRANSPORTATION

WEST ABUTMENT
 STRUCTURE NO. 037-0178

SHEET NO. 11 OF 15 SHEETS

F.A.S. RTE. 226	SECTION 3T & 3BR-1	COUNTY HENRY	TOTAL SHEETS 210	SHEET NO. 52
			CONTRACT NO. 64F25	
ILLINOIS FED. AID PROJECT				