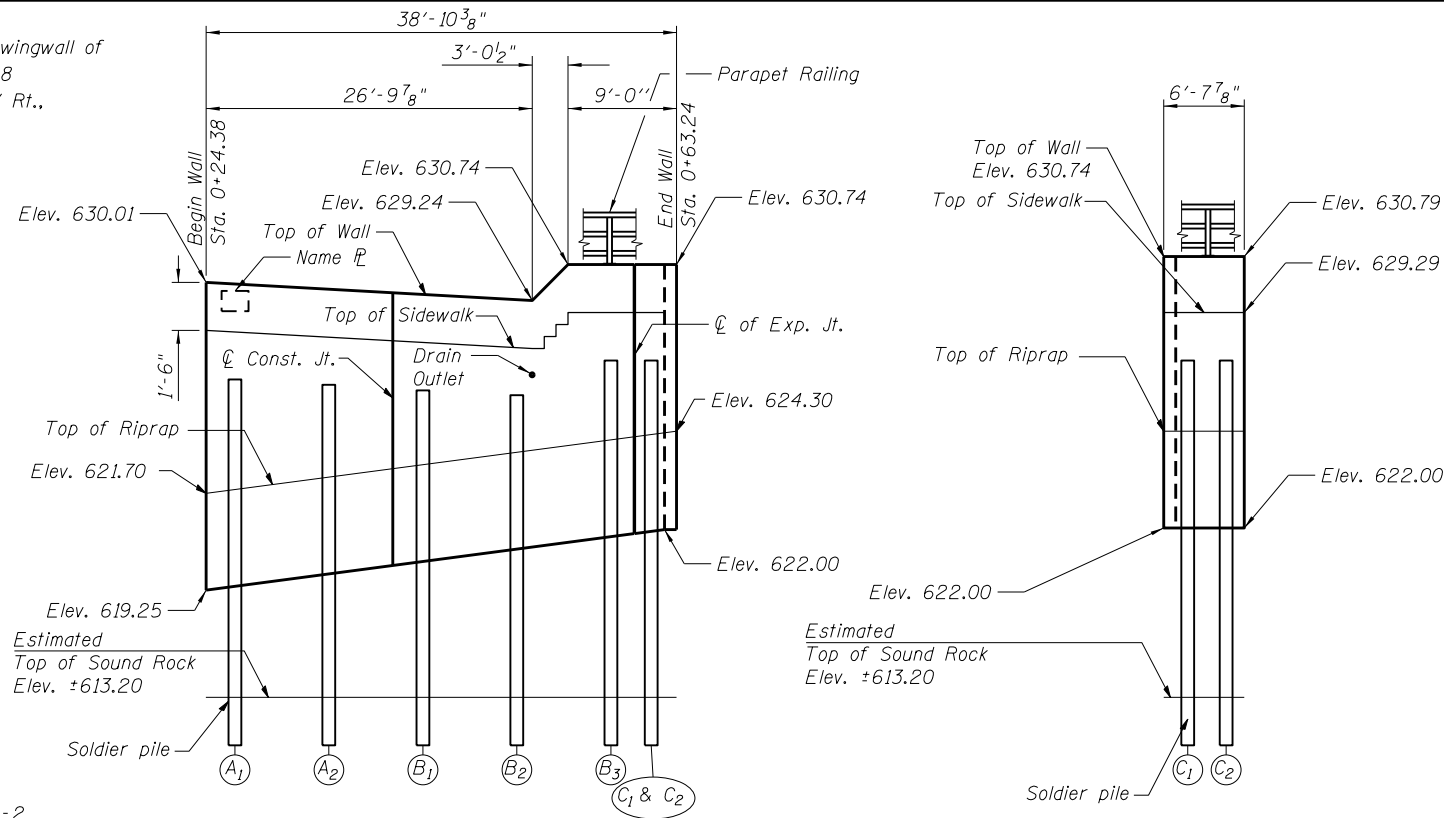


Bench Mark: Brass disc on the S.E. wingwall of Structure No. 043-0028
Sta. 318+60.35, 29.08' Rt., Elev. 634.33



STATION 318+50.36 LT
FAP RTE. 308 SEC. 103BR-4
BUILT 20XX
STR. NO. 043-7014

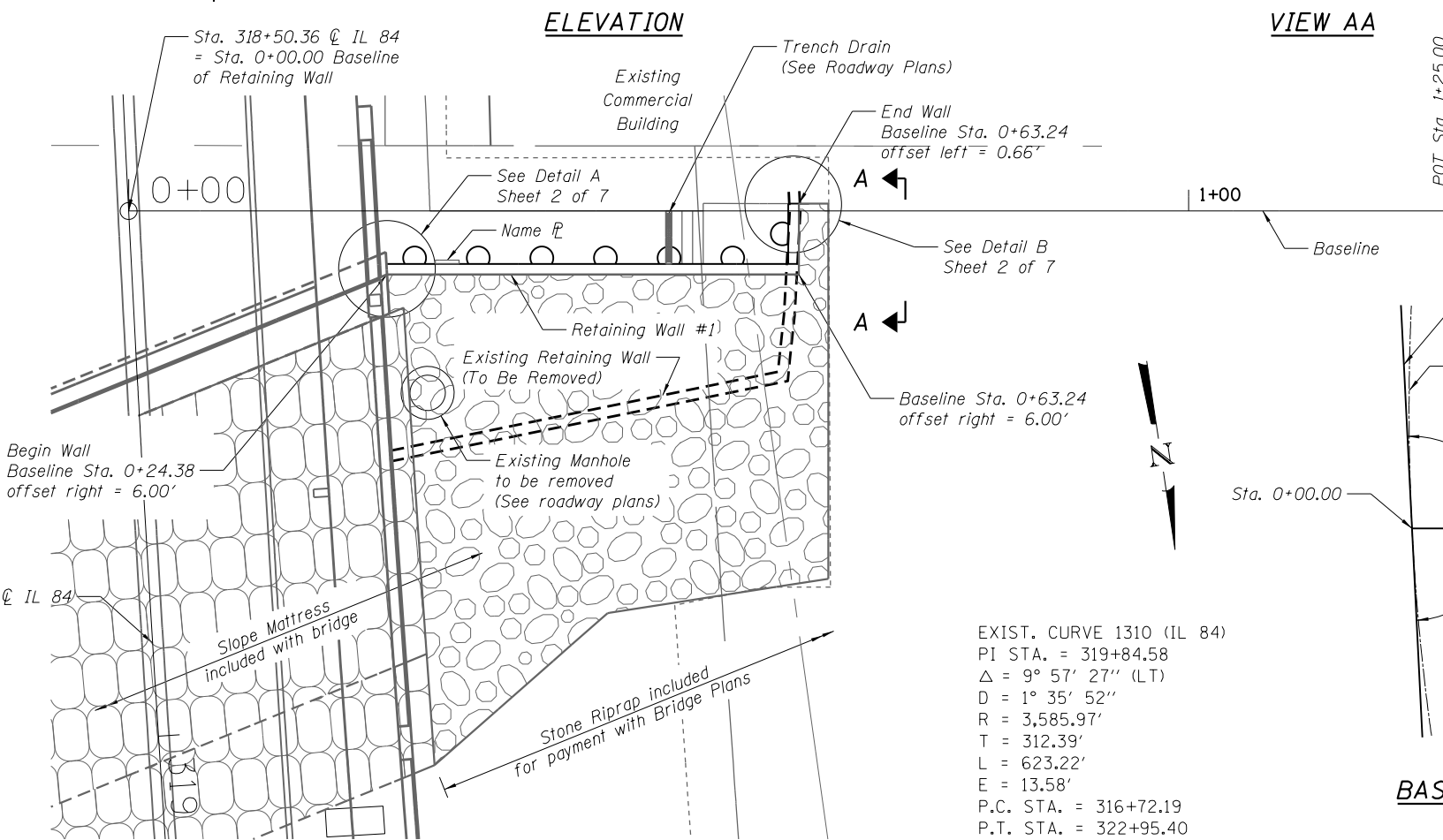
NAME PLATE
(See Dist. 2 Std. 88.2)

INDEX OF SHEETS

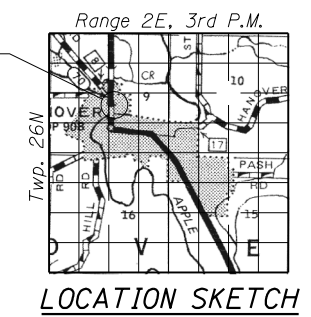
1. Plan and Elevation
2. General Notes, Cross Section
3. Panels A, B & C
4. Soldier Pile Wall Data
5. Soldier Pile Wall Details
6. Parapet Railing
7. Soil Borings

TOTAL BILL OF MATERIAL

ITEM	UNIT	Quantity
Structure Excavation	Cu. Yd.	60
Concrete Structures	Cu. Yd.	15.8
Stud Shear Connectors	Each	102
Reinforcement Bars, Epoxy Coated	Pound	2570
Parapet Railing	Foot	45
Geocomposite Wall Drain	Sq. Yd.	19
Drilling and Setting Soldier Piles (In Soil)	Cu. Ft.	574
Drilling and Setting Soldier Piles (In Rock)	Cu. Ft.	172
Retaining Wall Removal	Foot	48
Untreated Timber Lagging	Sq. Ft.	229
Furnishing Soldier Piles (Built-up Section)	Foot	18
Furnishing Soldier Piles (W Section)	Foot	99
Pipe Underdrains for Structures 4"	Foot	66
Name Plate	Each	1



BASELINE LAYOUT



DESIGN SPECIFICATIONS

2010 AASHTO LRFD Bridge Design Specifications, 5th Edition and 2010 Interims

DESIGN LOADING

Equivalent Fluid Lateral Soil Pressure = 50 lbs/cu.ft.
Surcharge load = 120 lbs/sq.ft.

DESIGN STRESSES

FIELD UNITS
f_c = 3,500 psi
f_y = 60,000 psi (Reinforcement)
f_y = 50,000 psi (Soldier Piles)

**GENERAL PLAN & ELEVATION
IL RTE 84 - RETAINING WALL #1**

FAP ROUTE 308
SEC. 103BR-4
JO DAVIESS COUNTY
STA 318+50.36 LT

FILE NAME = Z64E08-001-GPE.dgn
MODEL = Default
PLOT DRIVER = VBA_IDOT_PDF...11x17.pltcfgr



USER NAME = kchapman	DESIGNED -	REVISED
PLOT SCALE = 1/8" = 1'-0"	CHECKED -	REVISED
PLOT DATE = 8/6/2013	DRAWN -	REVISED
	CHECKED -	REVISED

STATE OF ILLINOIS
DEPARTMENT OF TRANSPORTATION

PLAN AND ELEVATION
RETAINING WALL #1
SHEET NO. 1 OF 7 SHEETS

F.A.P. RTE.	SECTION	COUNTY	TOTAL SHEETS	SHEET NO.
308	103BR-4	JO DAVIESS	159	111
CONTRACT NO. 64E08				
ILLINOIS FED. AID PROJECT				