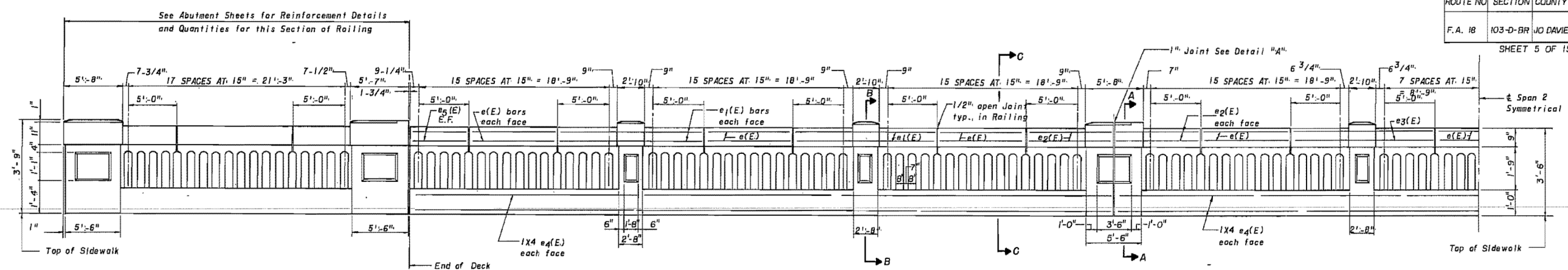


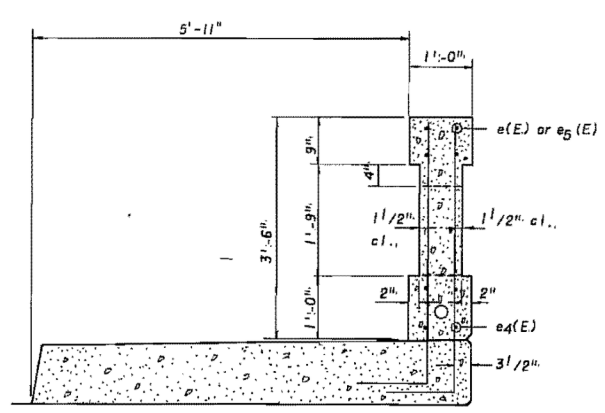
ROUTE NO.	SECTION	COUNTY	TOTAL SHEETS	SHEET NO.
F.A. 18	103-D-BR	JO DAVIESS	27	13

SHEET 5 OF 15

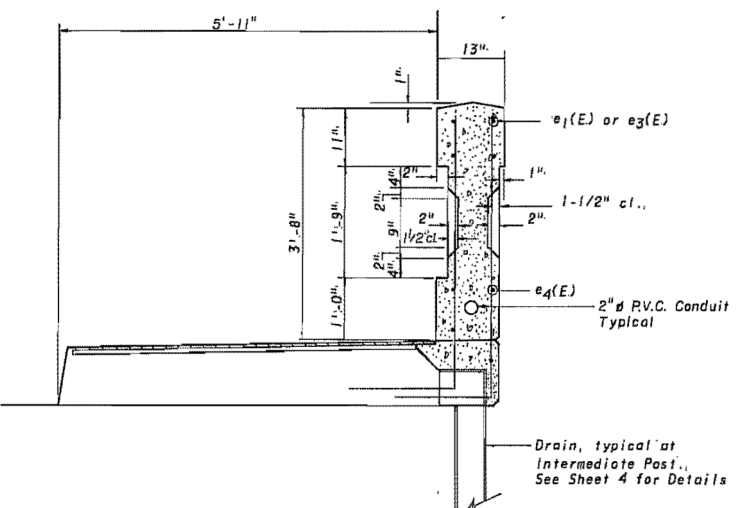


RAILING - EXTERIOR HALF ELEVATION

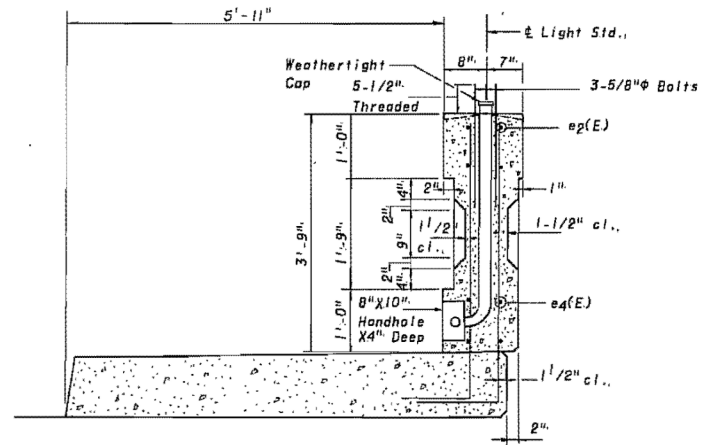
NOTE: 3-5/8"φ X 24" bolts (or rods with nut at bottom) shall be placed to match pattern for existing poles. All material shall be galv., per AASHTO M32. Provide 2 washers and 2 nuts at top - set thread after installation.  
 Cast of 5/8"φ bolts, nuts, 8 washers, 2"φ PVC conduit (schedule 40) & required fittings, and 8"X10" handholes shall be considered incidental to Class X Concrete.



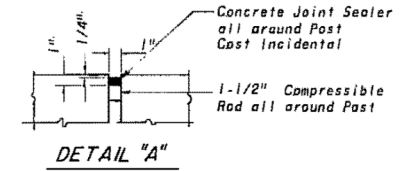
SECTION C-C THROUGH RAIL



SECTION B-B AT INTERMEDIATE POST



SECTION A-A AT LIGHT STANDARD POST

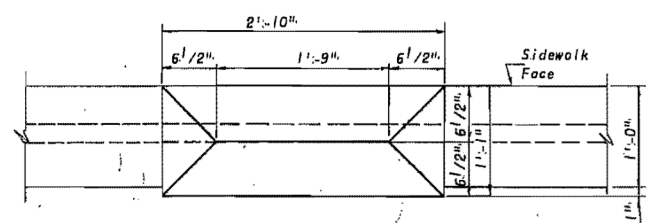


DETAIL "A"

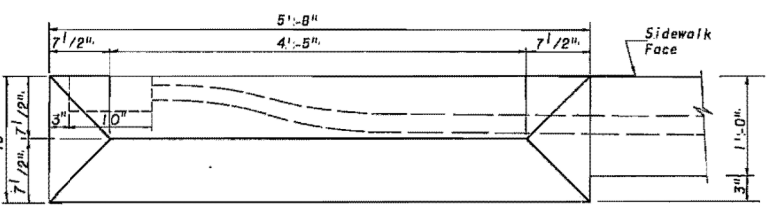
BILL OF MATERIAL

Bar	No.	Size	Length	Shape
e(E)	72	#4	8'-5"	—
e1(E)	32	#4	14'-0"	—
e2(E)	32	#4	8'-1"	—
e3(E)	16	#4	13'-8"	—
e4(E)	96	#4	18'-4"	—
e5(E)	16	#4	5'-6"	—

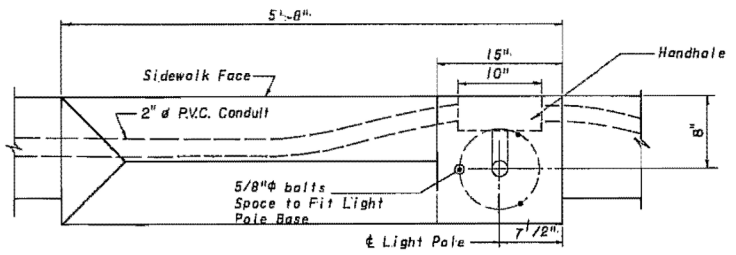
Class X Concrete	C. Y.	39.9
Reinf. Bars Epoxy Coat	Lbs.	2260



TOP VIEW AT INTERMEDIATE POST



TOP VIEW AT END POST



TOP VIEW AT LIGHT POLE

DESIGNED:	D.H.C.
CHECKED:	K.L.F.
DRAWN:	K.D.J.
CHECKED:	K.L.F.

RAILING  
 F.A. RTE. 18 OVER APPLE RIVER  
 SECTION 103-D-BR  
 JO DAVIESS COUNTY  
 STATION 259+08.20

FOR INFORMATION ONLY



USER NAME = dheberling	DESIGNED -	REVISD -
FILE NAME = 0430028-64E08.dgn	CHECKED -	REVISD -
PLOT SCALE = 0:2.00000 '1' / in.	DRAWN -	REVISD -
PLOT DATE = 8/5/2013	CHECKED -	REVISD -

STATE OF ILLINOIS  
 DEPARTMENT OF TRANSPORTATION

EXISTING PLANS  
 STRUCTURE NO. 043-0080  
 SHEET NO. 51 OF 60 SHEETS

F.A.P. RTE.	SECTION	COUNTY	TOTAL SHEETS	SHEET NO.
308	103BR-4	JoDAVIESS	159	101

CONTRACT NO. 64E08  
 ILLINOIS FED. AID PROJECT