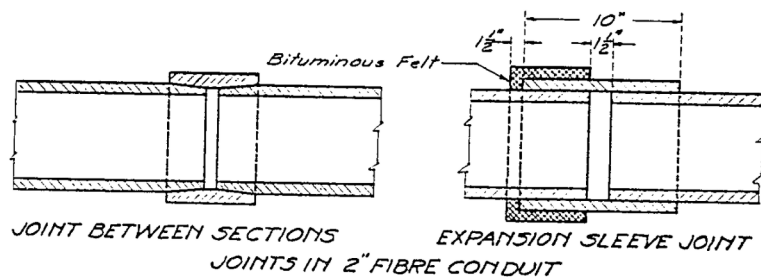
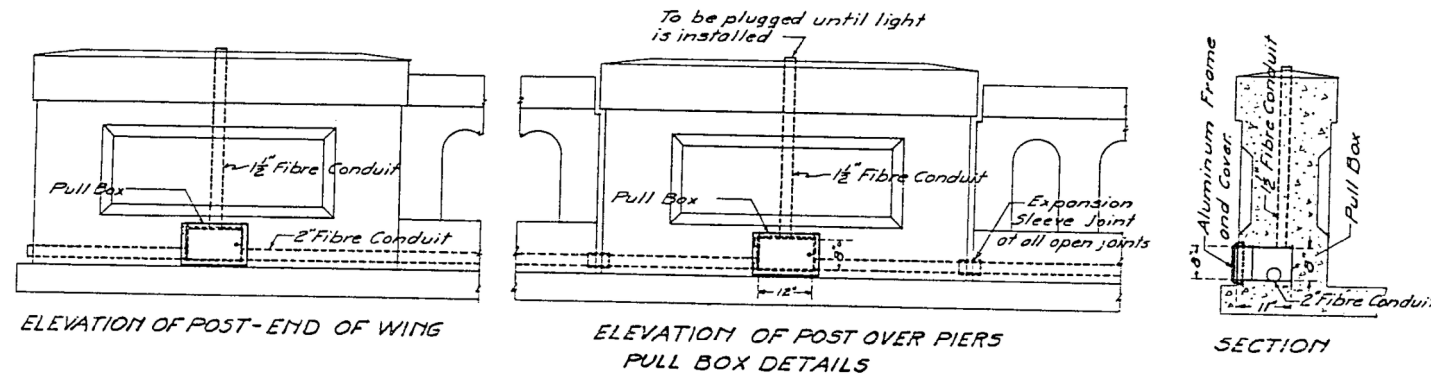
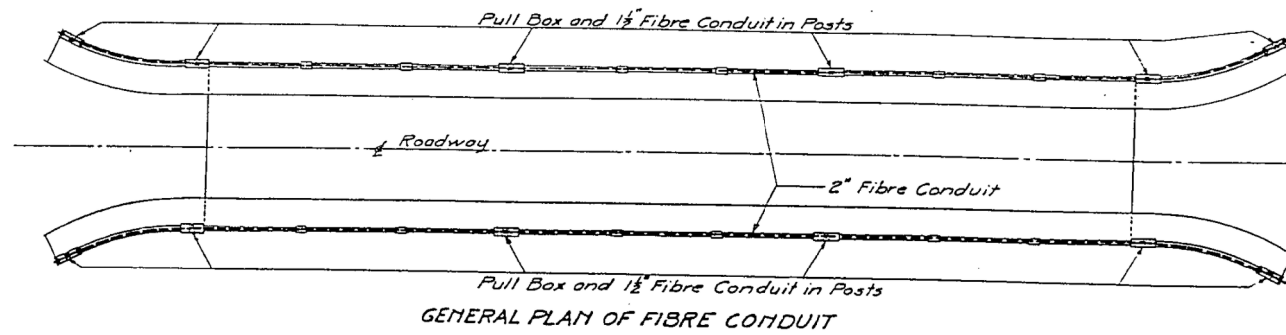


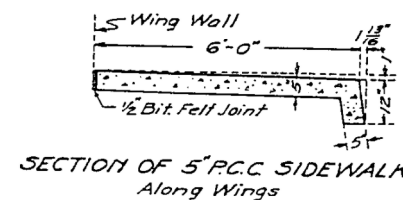
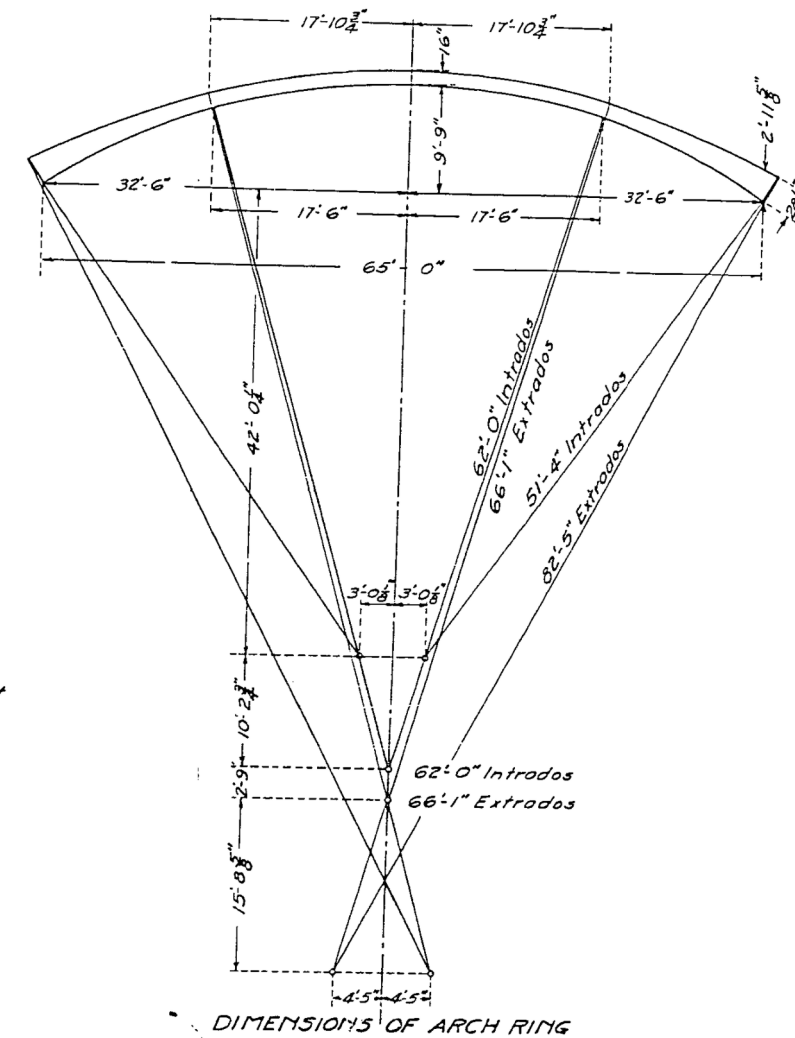
ROAD DISTRICT NO.	SEC.	COUNTY	TOTAL SHEETS	SHEET NO.
80	103-D	Jo Daviess	11	10
FED. ROAD DIST. NO. 7		ILLINOIS	FED. AID PROJECT	

SHEET NO. 5
6 SHEETS



**BILL OF MATERIAL
LIGHTING CONDUIT COMPLETE**

Pull Box Frame & Covers - Each	12
Expansion Sleeves for 2\"/>	
2\"/>	
1 1/2\"/>	



Note:-
Pull Boxes shall be formed in concrete and shall be weather proof.
Pull Box Frames and Covers shall be made of Aluminum, and shall be attached in such a manner as to be weather proof.
Bituminous fiber conduit shall be placed to carry all wiring.
All material and workmanship shall conform to the requirements of the National Electric Code.

The item of "Lighting Conduit Complete" shall include furnishing and installation of Pull Box Forms, Pull Box Frames and Covers, Expansion Sleeves for Conduits, Bituminous Fiber Conduits

STANDARD	COMPUTED - J. W. Williams	EXAMINED - 9-21-1933
	CHECKED - W. Hansen	
SPECIAL	DRAWN - J. W. Williams	PASSED - [Signature]
	CHECKED - [Signature]	ENGINEER OF DESIGN
	ASSEMBLED -	APPROVED - [Signature]
	CHECKED -	CHIEF HIGHWAY ENGINEER

DETAILS
HANOVER BRIDGE
S.B.I. ROUTE 80 SECTION 103-D
JO DAVIESS COUNTY
STATION 259+18

FOR INFORMATION ONLY

USER NAME = dheberling	DESIGNED -	REVISED -
FILE NAME = 0430028-64E08.dgn	CHECKED -	REVISED -
PLOT SCALE = 0:2.00000 '1' / in.	DRAWN -	REVISED -
PLOT DATE = 8/5/2013	CHECKED -	REVISED -

F.A.P. RTE.	SECTION	COUNTY	TOTAL SHEETS	SHEET NO.
308	103BR-4	JO DAVIESS	159	96
CONTRACT NO. 64E08				
ILLINOIS FED. AID PROJECT				