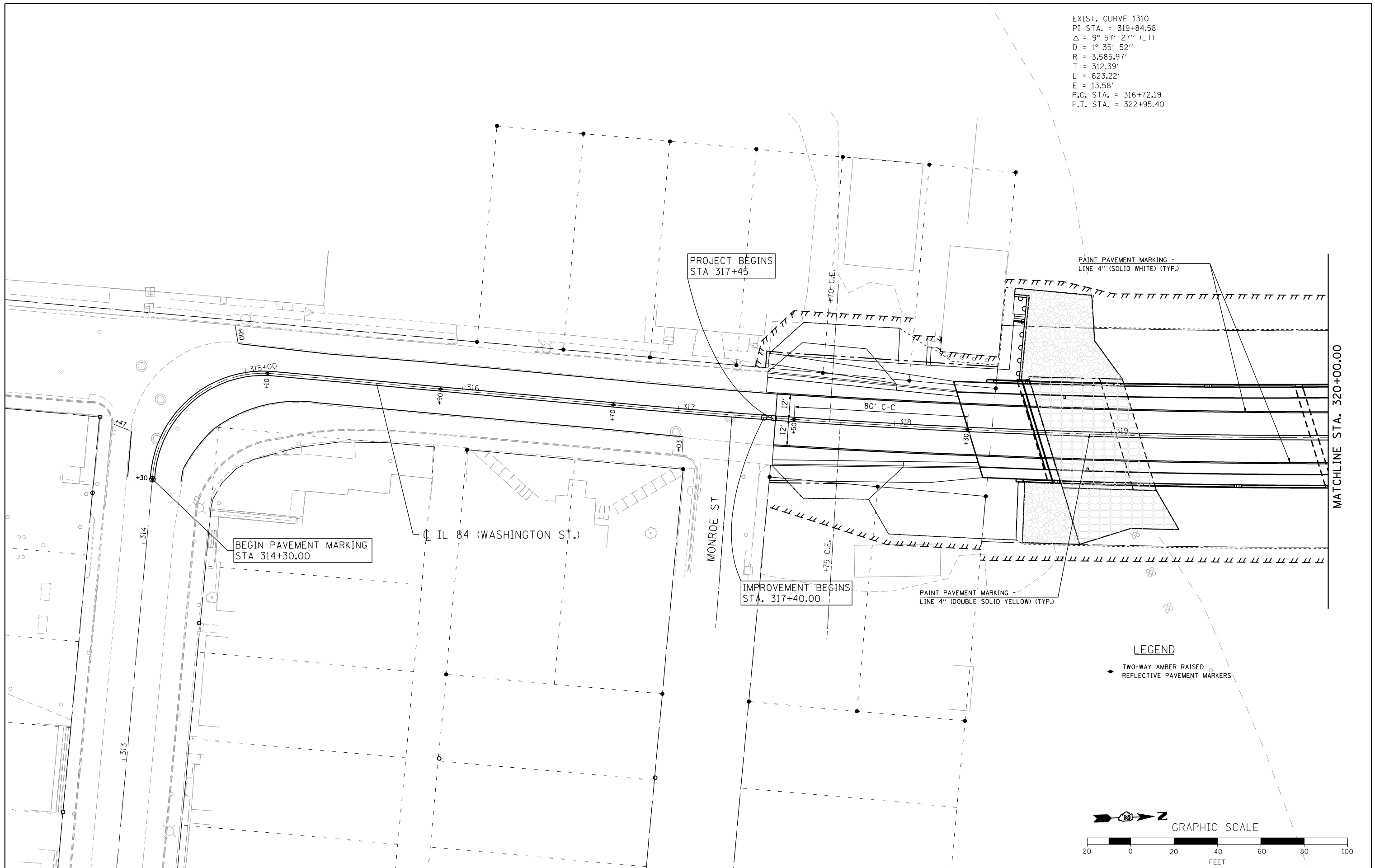


EXIST. CURVE 1310  
 PI STA. = 319+84.58  
 $\Delta = 9^\circ 57' 27''$  (LT)  
 $D = 1^\circ 35' 52''$   
 $R = 3,585.97'$   
 $T = 312.39'$   
 $L = 623.22'$   
 $E = 13.58'$   
 P.C. STA. = 316+72.19  
 P.T. STA. = 322+95.40



BEGIN PAVEMENT MARKING  
 STA 314+30.00

PROJECT BEGINS  
 STA 317+45

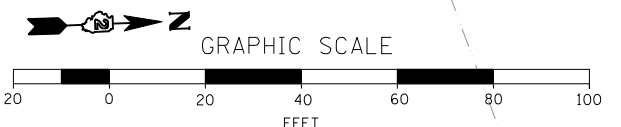
IMPROVEMENT BEGINS  
 STA. 317+40.00

PAINT PAVEMENT MARKING -  
 LINE 4" (SOLID WHITE) (TYP.)

PAINT PAVEMENT MARKING  
 LINE 4" (DOUBLE SOLID YELLOW) (TYP.)

LEGEND

- ◆ TWO-WAY AMBER RAISED REFLECTIVE PAVEMENT MARKERS



design firm  
 no. 184001036  
**whks**  
 engineers • planners • land surveyors

USER NAME = gjameson	DESIGNED -	REVISED -
FILE NAME = Z64E08-SHT-PMK-EXTEND	CHECKED -	REVISED -
PLOT SCALE = 3/8" = 1' IN.	DRAWN -	REVISED -
PLOT DATE = 8/5/2013	CHECKED -	REVISED -

**STATE OF ILLINOIS  
 DEPARTMENT OF TRANSPORTATION**

**PAVEMENT MARKING AND SIGNING PLANS  
 IL ROUTE 84 OVER APPLE RIVER**

F.A.P. RTE. 308	SECTION 1103-D-BRID	COUNTY JO DAVIESS	TOTAL SHEETS 159	SHEET NO. 49
CONTRACT NO. 64E08			ILLINOIS FED. AID PROJECT	

SCALE: 1"=20" SHEET NO. 1 OF 2 SHEETS STA. TO STA.