

FILE NAME : F:\2010\ME\10010.PT\154-23.WHKS\CADD\Bases\Z64E08-SHT\_Stage2B2\_20.dgn  
 USER : JLN  
 MILLENNIA PROFESSIONAL SERVICES



2600 Warrenville Road, Suite 203, Downers Grove, IL 60515-1761  
 630.705.0110 voice, 630.839.3566 fax  
 www.mps-il.com  
**MILLENNIA PROFESSIONAL SERVICES**

DESIGNED -	TVN	REVISED -	
DRAWN -	TVN/BB	REVISED -	
CHECKED -	MG	REVISED -	
DATE -	8/2/2013	REVISED -	

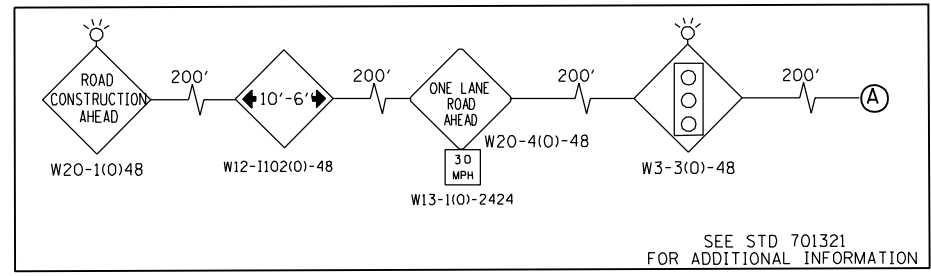
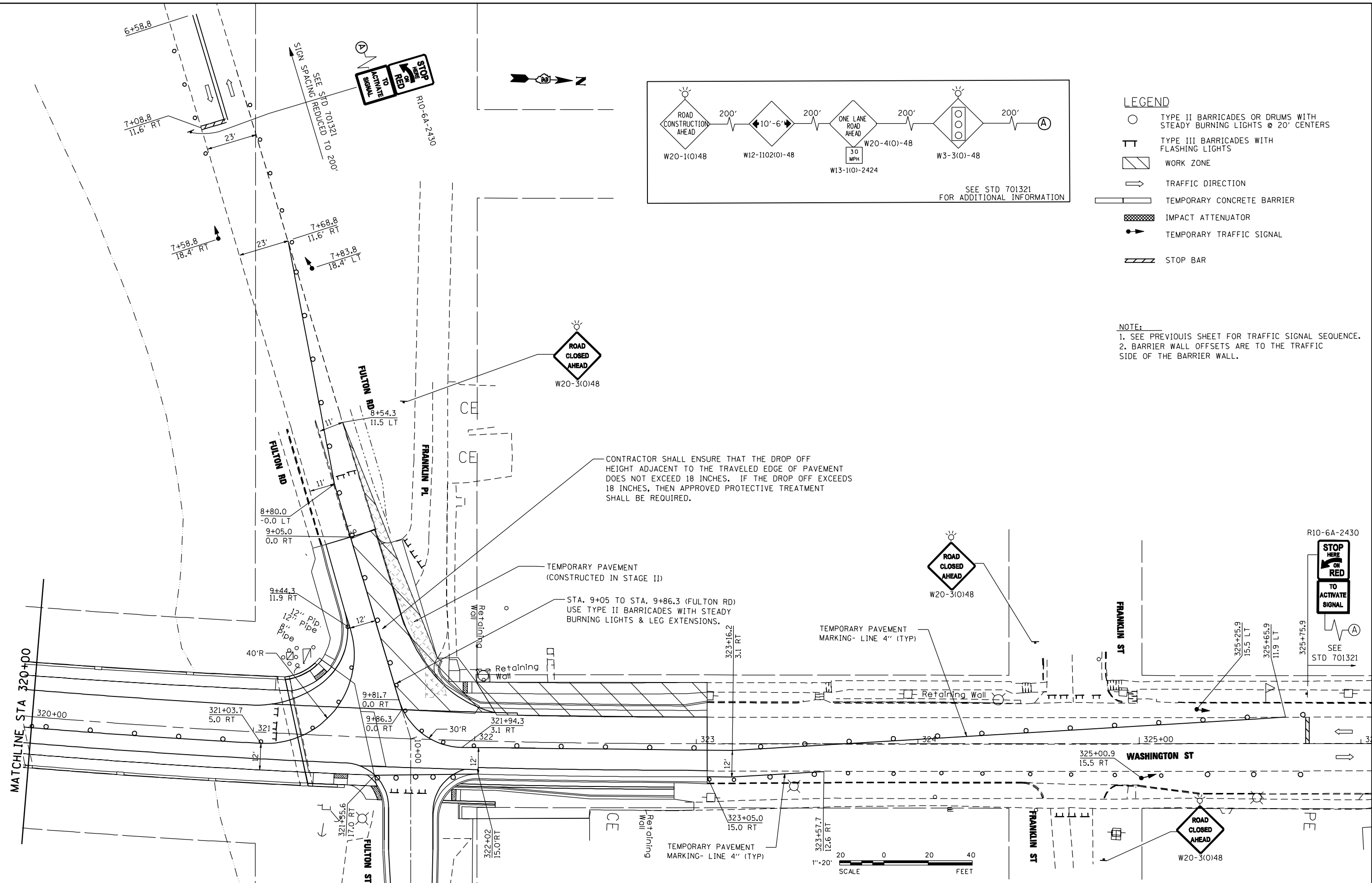
**STATE OF ILLINOIS  
 DEPARTMENT OF TRANSPORTATION**

**IL ROUTE 84  
 OVER APPLE RIVER**  
 SCALE: 1"=20'

**STAGES OF CONSTRUCTION  
 & TRAFFIC CONTROL  
 STAGE IIB**

F.A.P. RTE.	SECTION	COUNTY	TOTAL SHEETS	SHEET NO.
308	103BR-4	JO DAVIESS	159	37
CONTRACT NO. 64E08				

FED. ROAD DIST. NO. 1 | ILLINOIS FED. AID PROJECT  
 P:\2010\ME\10010.PT\154-23.WHKS\CADD\Bases\Z64E08-SHT\_Stage2B2\_20.dgn



- LEGEND**
- TYPE II BARRICADES OR DRUMS WITH STEADY BURNING LIGHTS @ 20' CENTERS
  - ⊥ TYPE III BARRICADES WITH FLASHING LIGHTS
  - ▨ WORK ZONE
  - TRAFFIC DIRECTION
  - ▬ TEMPORARY CONCRETE BARRIER
  - ▩ IMPACT ATTENUATOR
  - TEMPORARY TRAFFIC SIGNAL
  - ▬ STOP BAR

**NOTE:**  
 1. SEE PREVIOUS SHEET FOR TRAFFIC SIGNAL SEQUENCE.  
 2. BARRIER WALL OFFSETS ARE TO THE TRAFFIC SIDE OF THE BARRIER WALL.

CONTRACTOR SHALL ENSURE THAT THE DROP OFF HEIGHT ADJACENT TO THE TRAVELED EDGE OF PAVEMENT DOES NOT EXCEED 18 INCHES. IF THE DROP OFF EXCEEDS 18 INCHES, THEN APPROVED PROTECTIVE TREATMENT SHALL BE REQUIRED.

