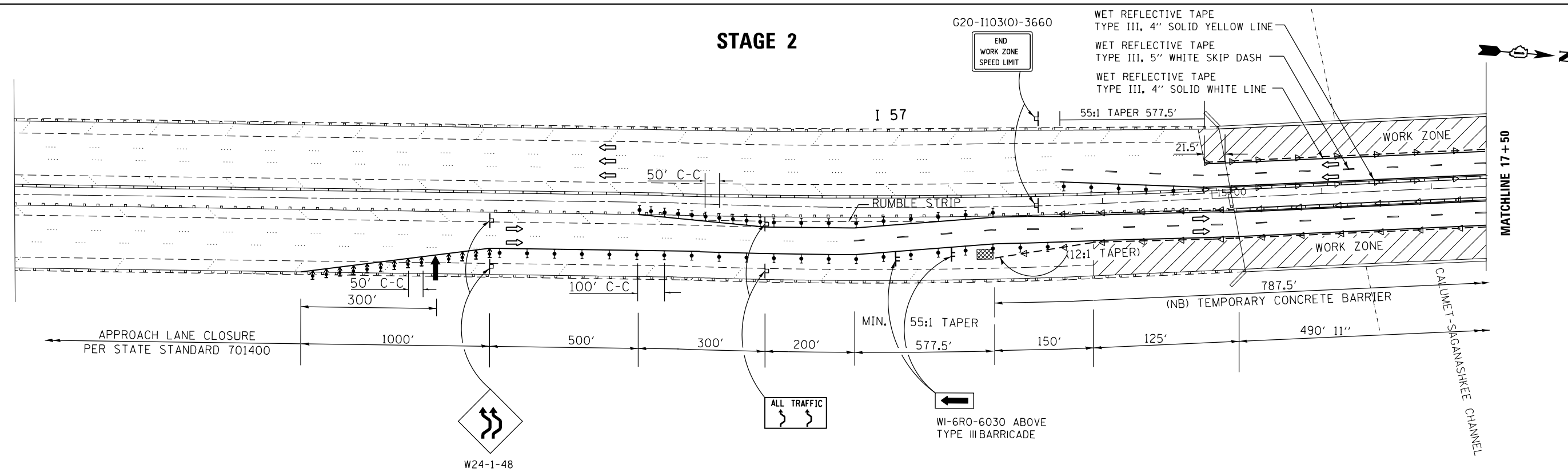


STAGE 2

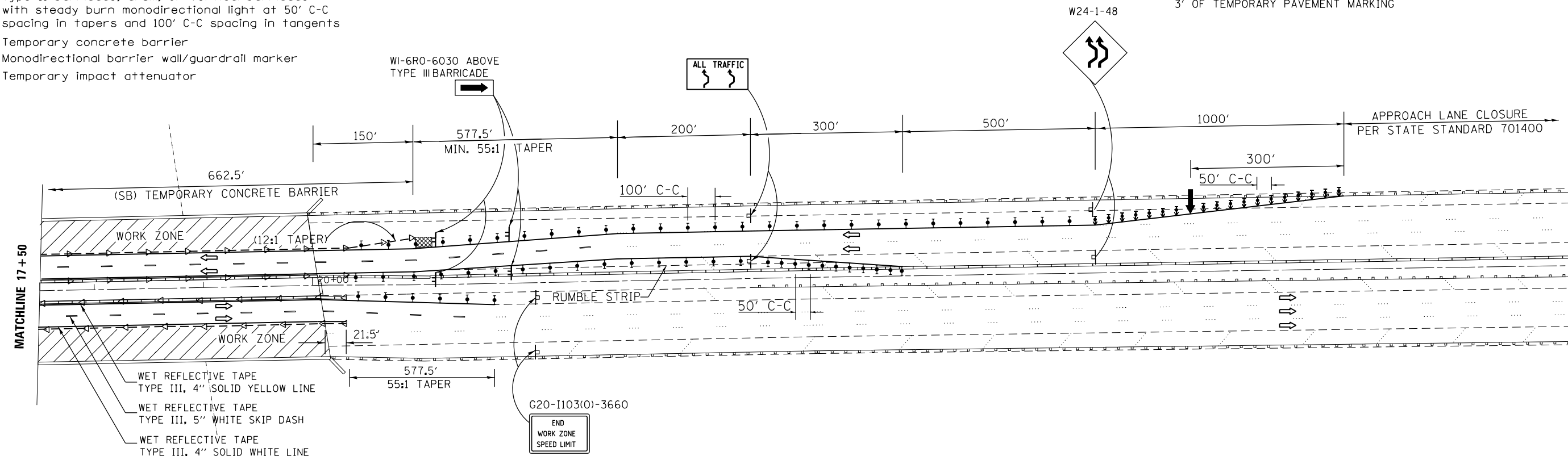


- WET REFLECTIVE TAPE TYPE III, 4" SOLID YELLOW LINE
- WET REFLECTIVE TAPE TYPE III, 5" WHITE SKIP DASH
- WET REFLECTIVE TAPE TYPE III, 4" SOLID WHITE LINE

SYMBOLS

- ↑ Arrow board
- ▨ Work area
- ⊥ Sign
- ↑ Direction indicator barricade with steady burn monodirectional light at 50' C-C spacing
- ⊥ Type II barricade, drum, or vertical barricade with steady burn monodirectional light at 50' C-C spacing in tapers and 100' C-C spacing in tangents
- Temporary concrete barrier
- ◁ Monodirectional barrier wall/guardrail marker
- ▣ Temporary impact attenuator

- NOTES:
- ① EXISTING CONFLICTING PAVEMENT MARKING LINES SHALL BE REMOVED
 - ② ALL SIGNS SHALL BE POST MOUNTED UNLESS THE SIGNS ARE LOCATED ON THE PAVEMENT OR DEFINE A MOVING OR INTERMITTENT OPERATION
 - ③ REMOVE ALL PERMANENT PAVEMENT MARKING WITHIN 3' OF TEMPORARY PAVEMENT MARKING



FILE NAME =	USER NAME = hardnettr	DESIGNED -	REVISED -	STATE OF ILLINOIS DEPARTMENT OF TRANSPORTATION	STAGING PLAN I-57 OVER CAL-SAG CHANNEL			F.A.I RTE.	SECTION	COUNTY	TOTAL SHEETS	SHEET NO.		
Default	ca:\pw\work\p\midot\hardnettr\d0345314\034313-sh1-plan.dgn	DRAWN -	REVISED -		SCALE:	SHEET 2	OF 2 SHEETS	STA.	TO STA.	57	2013-025-I	COOK	23	18
	PLOT SCALE = 100.0000' / in.	CHECKED -	REVISED -											
	PLOT DATE = 8/30/2013	DATE -	REVISED -											

ILLINOIS FED. AID PROJECT