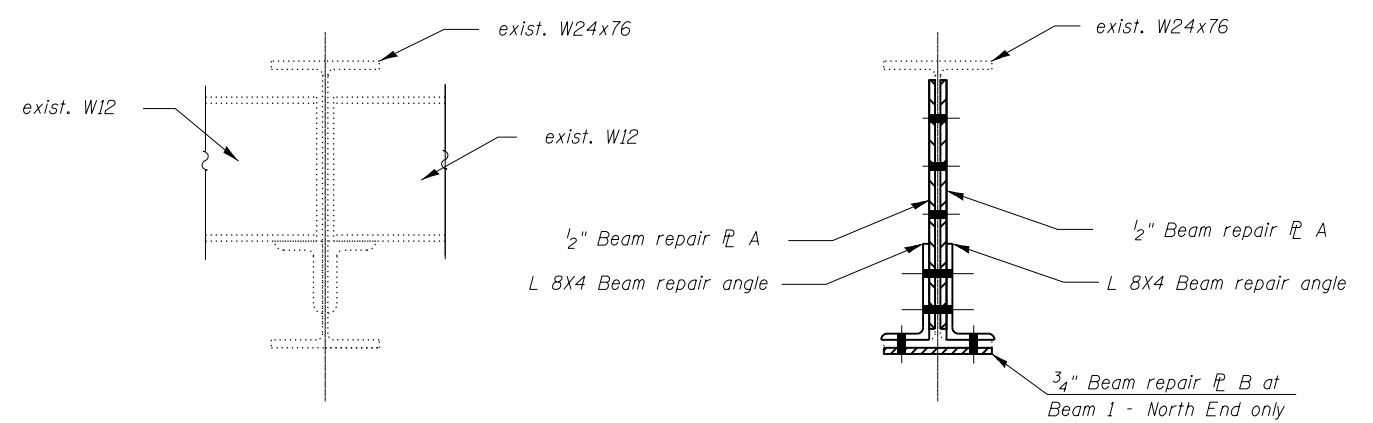


DETAIL A

ELEVATION BEAM 1 (N.E.), Beam 1 (S.E.) AND Beam 1A (S.E.)

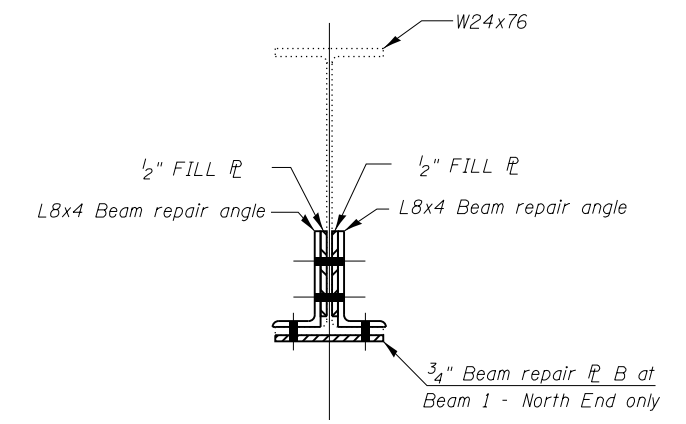
3 Required
Field Drill holes in existing beam's web and flange using new plates and angles as template

N.E. - North End
S.E. - South End

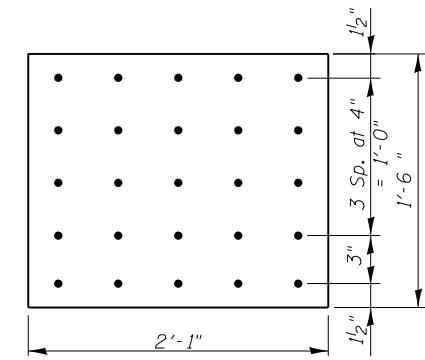


SECTION A-A

SECTION B-B

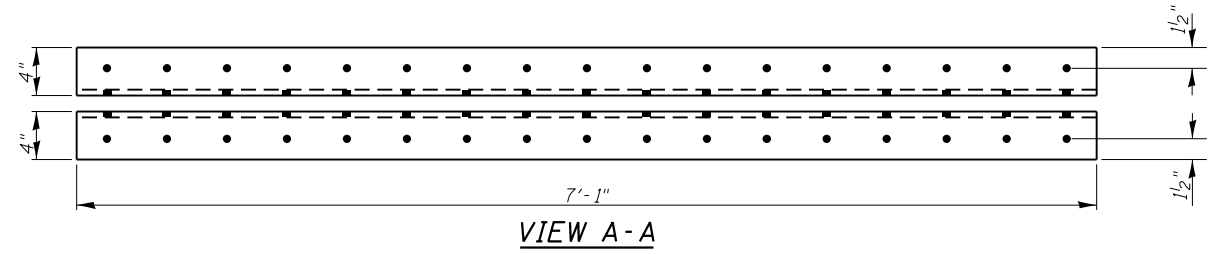


SECTION C-C

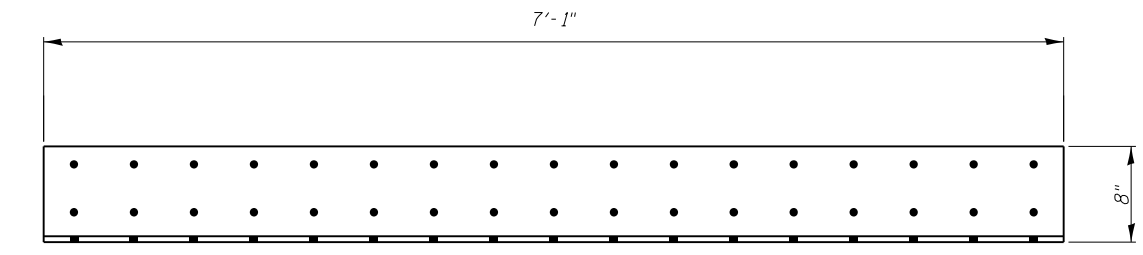


BEAM REPAIR PLATE A

PL 1/2" x 1'-6" x 2'-1"
3 Pairs = 6 Total Required

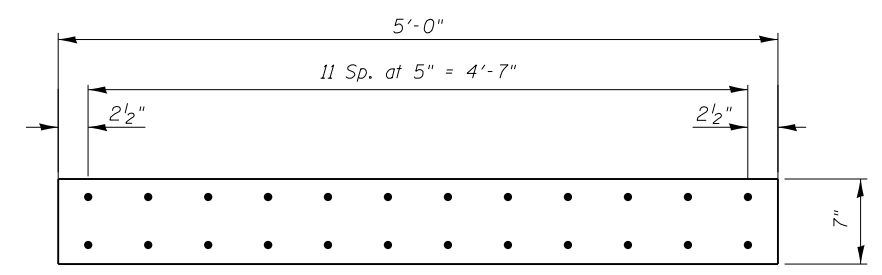


VIEW A-A



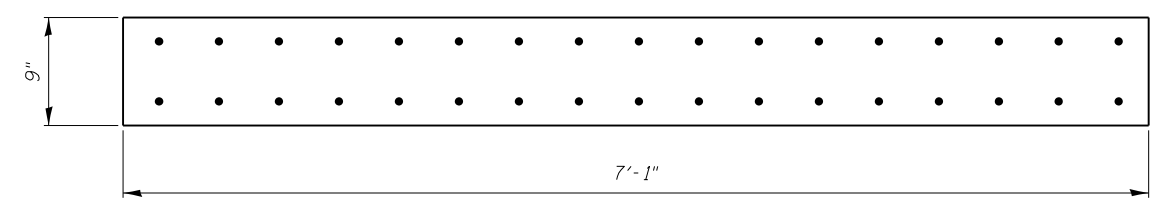
BEAM REPAIR ANGLE

L 8x4x1/2
3 Pairs = 6 Total Required



BEAM REPAIR FILL PL A

PL 1/2" x 7" x 5'-0"
3 Pairs = 6 Total Required



BEAM REPAIR PLATE B

PL 7'-1" x 9" x 3/4"
1 Required

Field Drill holes in beam repair plate B using beam repair angle L8x4 as template

DESIGNED RAD	EXAMINED _____	DATE - _____	STATE OF ILLINOIS DEPARTMENT OF TRANSPORTATION	IL RTE 83 AT SALT CREEK STEEL REPAIR DETAILS (S.N. 022-0045)			F.A.P. RTE. 344	SECTION 543-X-B-I-2	COUNTY _____	TOTAL SHEETS 31	SHEET NO. 15	
CHECKED RB	PASSED _____	REVISOR _____		SHEET NO. 12 OF 13 SHEETS			CONTRACT NO. 60T76			ILLINOIS FED. AID PROJECT		
DRAWN RAD	ENGINEER OF STRUCTURAL SERVICES _____	REVISOR _____										
CHECKED JAM	ENGINEER OF BRIDGES AND STRUCTURES _____	REVISOR _____										