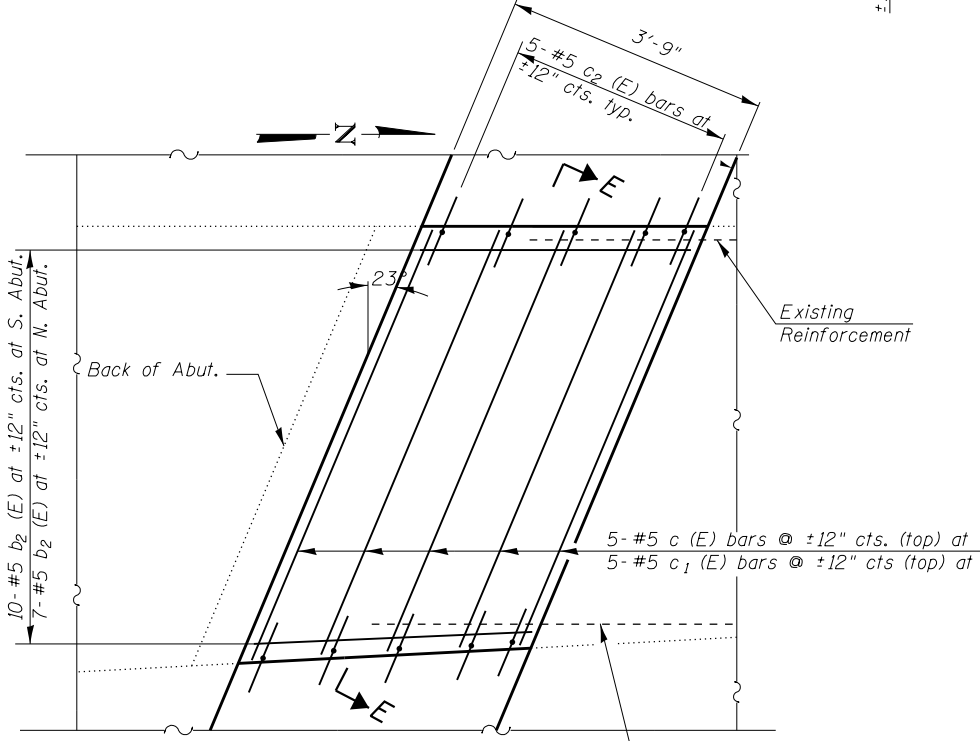
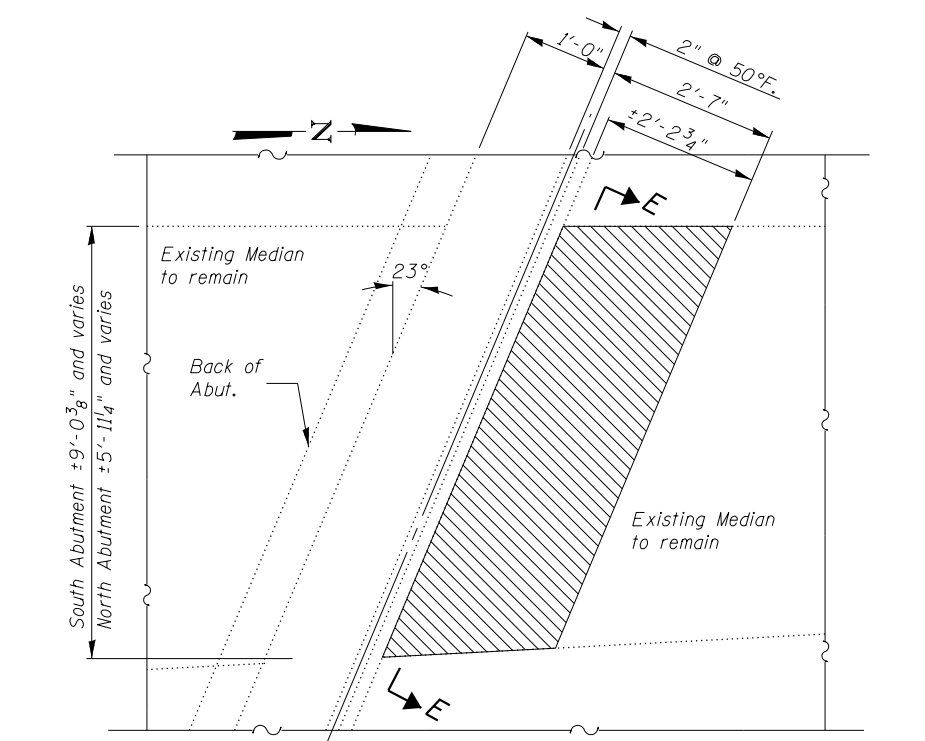


BILL OF MATERIAL				
Bar	No.	Size	Length	Shape
a (E)	229	#6	3'-7"	U
a1 (E)	173	#6	4'-11"	U
a2 (E)	90	#5	26'-3"	U
a3 (E)	30	#5	41'-3"	U
a4 (E)	30	#5	25'-6"	U
a5 (E)	12	#6	4'-0"	U
a6 (E)	8	#5	12'-3"	U
b (E)	36	#5	32'-2"	U
b1 (E)	8	#6	23'-0"	U
b2 (E)	524	#5	3'-10"	U
c (E)	5	#5	8'-3"	U
c1 (E)	5	#5	5'-6"	U
c2 (E)	20	#5	2'-4"	U
d (E)	16	#4	5'-5"	U
d1 (E)	16	#5	4'-2"	U
m (E)	12	#6	41'-3"	U
m1 (E)	24	#6	38'-0"	U
m2 (E)	12	#6	25'-6"	U
m3 (E)	32	#6	4'-0"	U
m4 (E)	112	#6	8'-0"	U
m5 (E)	4	#6	9'-0"	U
m6 (E)	4	#6	10'-5"	U
s (E)	274	#5	8'-2"	U
v (E)	548	#5	3'-0"	U
Concrete Removal		Cu. Yd.	47	
Reinforcement Bars, Epoxy Coated		Pound	19,350	
Concrete Superstructure		Cu. Yd.	90	
Protective Coat		Sq. Yd.	178	

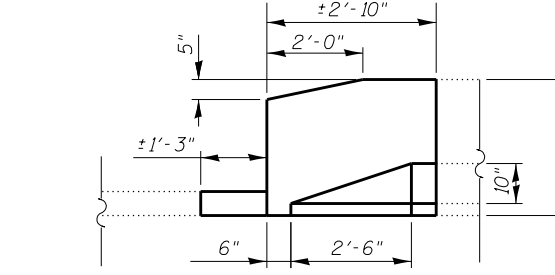
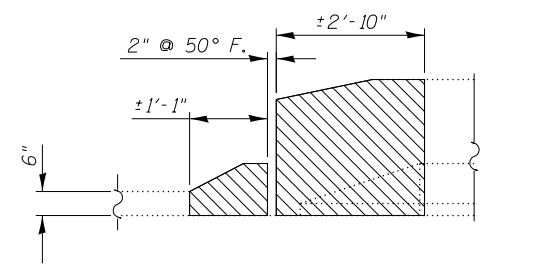
Bars indicated thus 4x2 #6 etc. indicates 4 lines of bars with 2 lengths per line

**LEGEND:**  
 Hatched area indicates Concrete Removal



**EXISTING PLAN**  
 South Abutment shown  
 North Abutment Similar by rotation 180°

**PROPOSED PLAN**  
 South Abutment shown  
 North Abutment Similar by rotation 180°



**INSIDE ELEVATION OF PARAPET F-F**  
 (EXISTING)

**INSIDE ELEVATION OF PARAPET F-F**  
 (PROPOSED)

DESIGNED RAD	EXAMINED	DATE
CHECKED RB	ENGINEER OF STRUCTURAL SERVICES	
DRAWN RAD	PASSED	REVISED
CHECKED JAM	ENGINEER OF BRIDGES AND STRUCTURES	REVISED

STATE OF ILLINOIS  
 DEPARTMENT OF TRANSPORTATION

IL RTE 83 AT SALT CREEK  
 MEDIAN PLAN AND SECTION

F.A.P. RTE.	SECTION	COUNTY	TOTAL SHEETS	SHEET NO.
344	543-X-B-I-2	DUPAGE	31	9
CONTRACT NO. 60T76				

SHEET NO. 6 OF 13 SHEETS

ILLINOIS FED. AID PROJECT