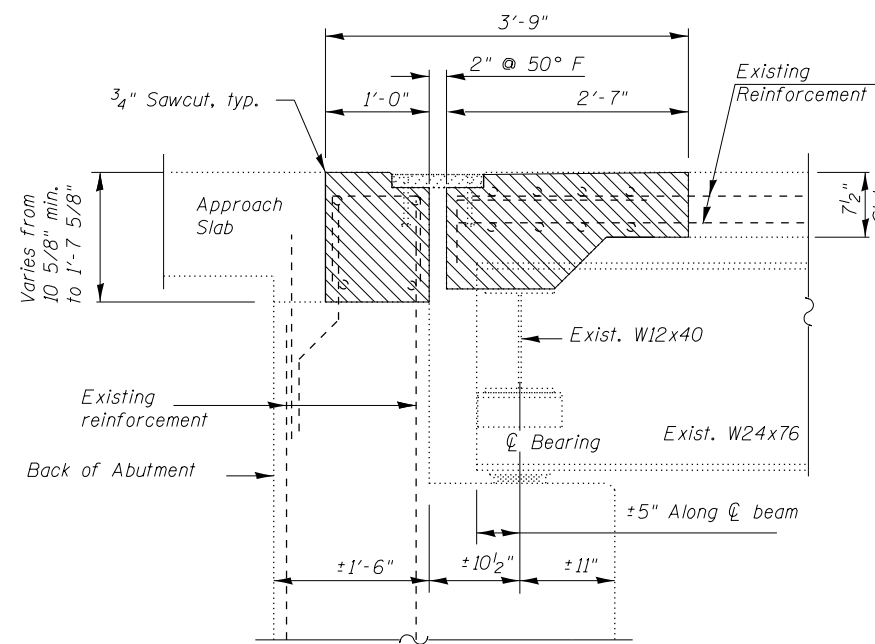


SECTION B-B
(EXISTING)

* Epoxy grout #5 v(E) bars in 7/8" ϕ drilled holes. See Art. 584 Std. Specs. Cost included with Reinforcement Bars, Epoxy Coated.

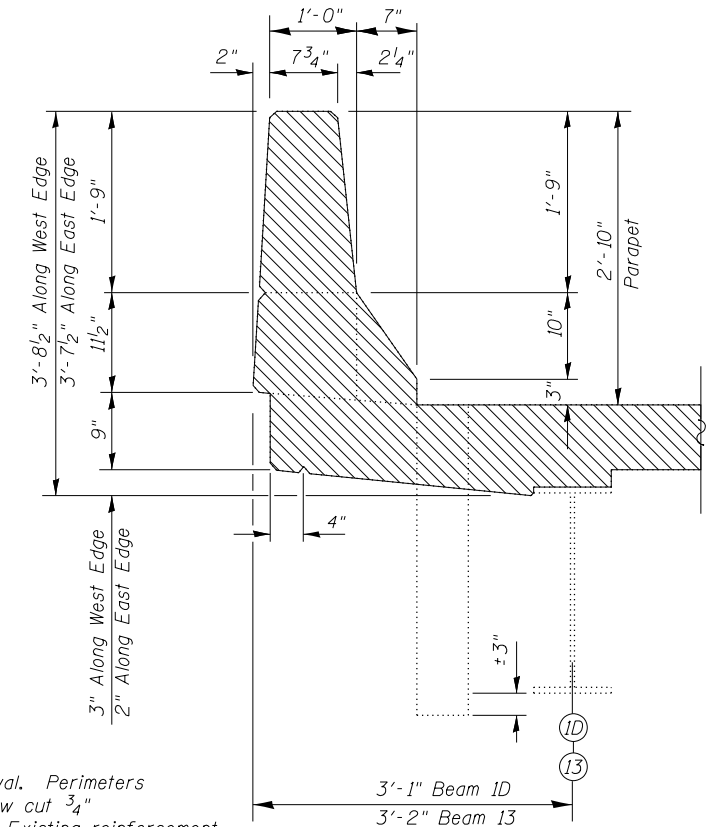


SECTION C-C
(EXISTING)

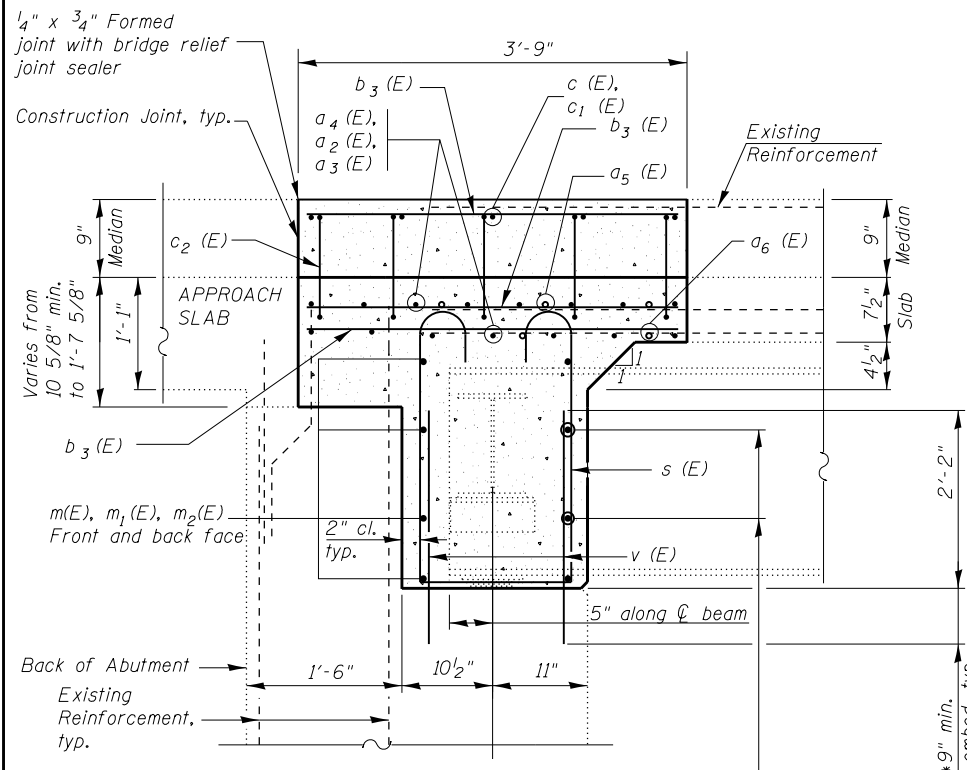
LEGEND:



Hatched area indicates Concrete Removal. Perimeters of Concrete Removal areas shall be saw cut 3/4" prior to the removal of the concrete. Existing reinforcement extending into removed area shall be cleaned, straightened and incorporated into the new construction. Cost included with Concrete Removal.

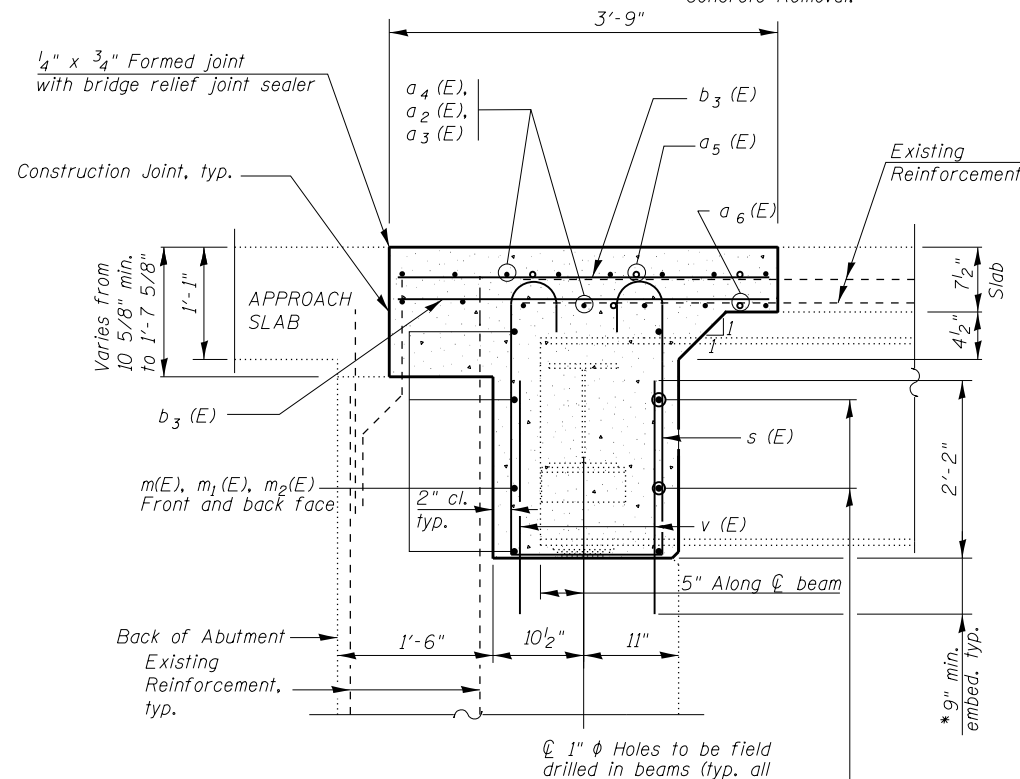


SECTION D-D
(EXISTING)



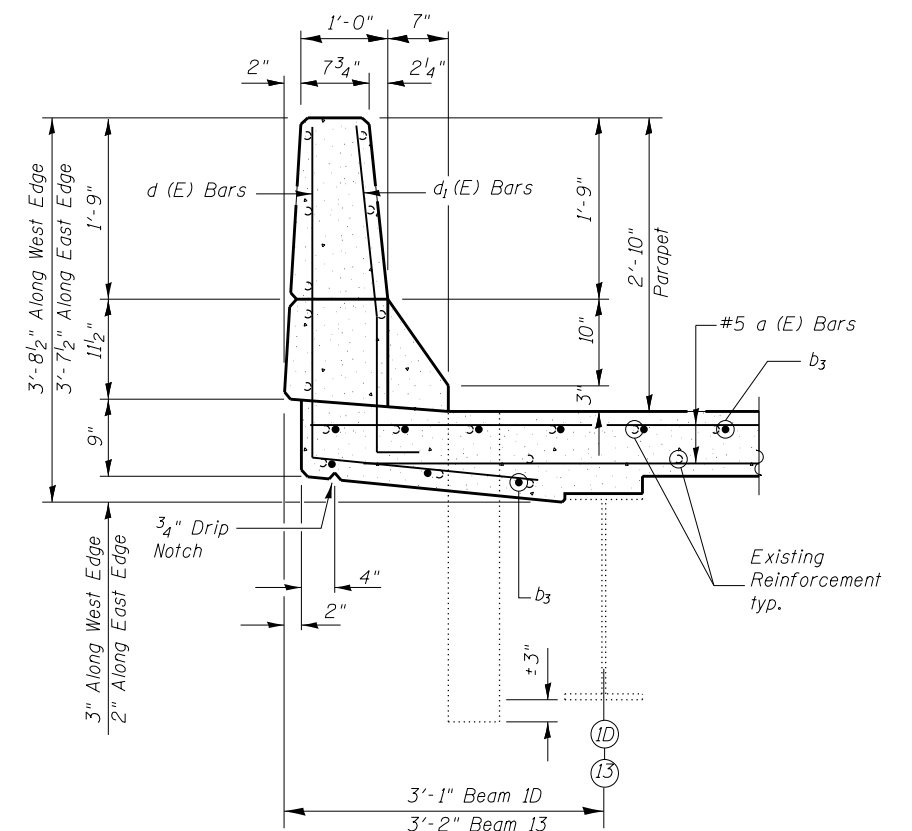
SECTION B-B
(PROPOSED)

Dimensions at right angles to abutment, except as shown



SECTION C-C
(PROPOSED)

Dimensions at right angles to abutment, except as shown



SECTION D-D
(PROPOSED)

DESIGNED	RAD
CHECKED	RB
DRAWN	RAD
CHECKED	JAM

EXAMINED	DATE
PASSED	REVISOR
ENGINEER OF STRUCTURAL SERVICES	REVISOR
ENGINEER OF BRIDGES AND STRUCTURES	REVISOR

DATE	REVISOR
REVISOR	REVISOR

STATE OF ILLINOIS
DEPARTMENT OF TRANSPORTATION

IL RTE 83 AT SALT CREEK
SECTIONS AND DETAILS (S.N. 022-0045)

SHEET NO. 5 OF 13 SHEETS

F.A.P. RTE.	SECTION	COUNTY	TOTAL SHEETS	SHEET NO.
344	543-X-B-1-2	DUPAGE	31	8
CONTRACT NO. 60T76				

ILLINOIS FED. AID PROJECT