

STATE OF ILLINOIS
DEPARTMENT OF TRANSPORTATION

F.A.P. RTE.	SECTION	COUNTY	TOTAL SHEETS	SHEET NO.
VAR	2025-2043-GRF	COOK	7	1
		ILLINOIS	CONTRACT NO. 80B73	

*1) 1-55 2) 1-57 3) 1-90 4) 1-94

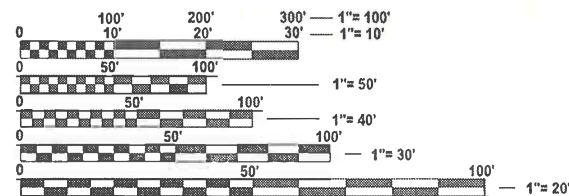
D-91-027-26

FOR INDEX OF SHEETS, SEE SHEET NO.

PROPOSED
HIGHWAY PLANS

FAP ROUTES: VARIOUS
SECTION 2025-2043-GRF
GRAFFITI REMOVAL
COOK COUNTY

C-91-032-26



FULL SIZE PLANS HAVE BEEN PREPARED USING STANDARD ENGINEERING SCALES. REDUCED SIZED PLANS WILL NOT CONFORM TO STANDARD SCALES. IN MAKING MEASUREMENTS ON REDUCED PLANS, THE ABOVE SCALES MAY BE USED.

J.U.L.I.E.
JOINT UTILITY LOCATION INFORMATION FOR EXCAVATION
1-800-892-0123
OR 811

PROJECT ENGINEER: OSCAR OLIVEROS
PROJECT MANAGER: JACEK EJMONT

847-705-4548
847-705-4641

CONTRACT NO. 80B73

SEE SHEETS 4 THROUGH
6 FOR LOCATION MAPS

STATE OF ILLINOIS
DEPARTMENT OF TRANSPORTATION

SUBMITTED Aug 20th 2025
[Signature] REGIONAL ENGINEER

October 3, 2025
[Signature] ENGINEER OF DESIGN AND ENVIRONMENT

October 3, 2025
[Signature] DIRECTOR OF HIGHWAYS PROJECT IMPLEMENTATION

PRINTED BY THE AUTHORITY
OF THE STATE OF ILLINOIS

MODEL: Index and Standards [Sheet]
FILE NAME: c:\p\work\pilot\illinois.gov_jacek.ejmont@illinois.gov\1152251D102726-shk-genote.dgn

INDEX OF SHEETS

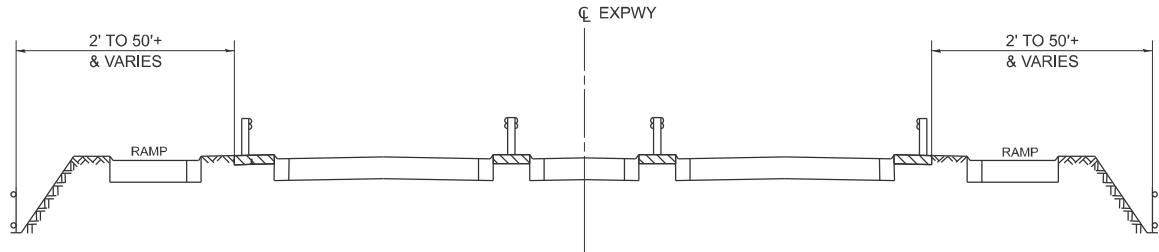
SHEET NO.	DESCRIPTION
1.	TITLE SHEET
2.	INDEX OF SHEETS, APPLICABLE STATE STANDARDS
3.	SUMMARY OF QUANTITIES, GENERAL NOTES, TYPICAL SECTIONS
4.	EXPRESSWAY GRAFFITI CLEANING LOCATION MAP NORTH AREA
5.	EXPRESSWAY GRAFFITI CLEANING LOCATION MAP CENTRAL AREA
6.	EXPRESSWAY GRAFFITI CLEANING LOCATION MAP SOUTH AREA
7.	TRAFFIC CONTROL DETAILS FOR FREEWAY SHOULDER CLOSURES AND PARTIAL RAMP CLOSURES (TC-17)

STATE STANDARDS

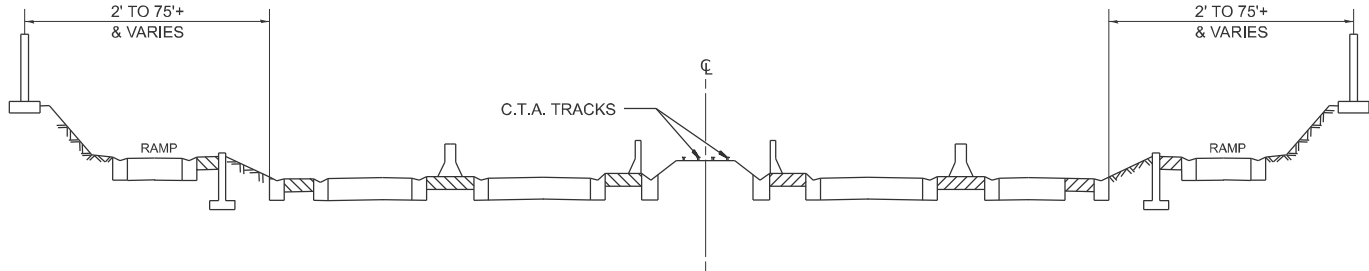
STANDARD NO.	DESCRIPTION
701106-02	OFF-ROAD OPERATION MULTILANE, MORE THAN 15' AWAY
701426-09	LANE CLOSURE, MULTILANE, INTERMITTENT OR MOVING OPER., FOR SPEEDS > 45 MPH
701901-10	TRAFFIC CONTROL DEVICES

	USER NAME = Jacek.Ejmont	DESIGNED -	REVISED -	STATE OF ILLINOIS DEPARTMENT OF TRANSPORTATION	INDEX OF SHEETS, STATE STANDARDS, AND GENERAL NOTES			F.A.P RTE.	SECTION	COUNTY	TOTAL SHEETS	SHEET NO.
		DRAWN -	REVISED -					*VAR	2025-2043-GRF	COOK	7	2
		CHECKED -	REVISED -					CONTRACT NO. 80B73				
	PLOT DATE = 8/19/2025	DATE -	REVISED -		SCALE:	SHEET 1	OF 1 SHEETS	STA.	TO STA.	ILLINOIS FED. AID PROJECT		

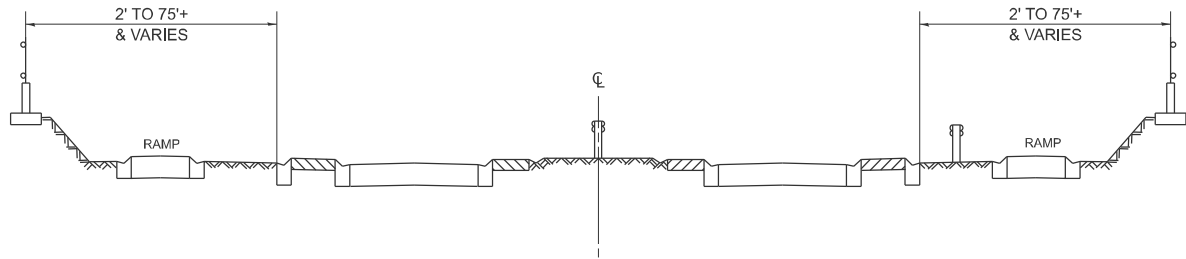
MODEL: TypicalNotes-SOO
FILE NAME: c:\p\work\pwork\illinois.gov_jacek.ejmont\illinois.gov\d1152251\102726-shk-typical.dgn



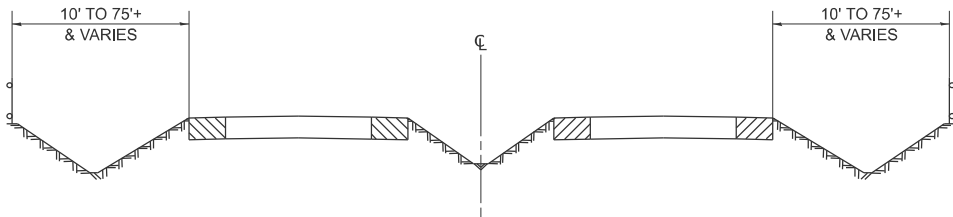
TYPICAL EXPRESSWAY CROSS-SECTION NO. 1



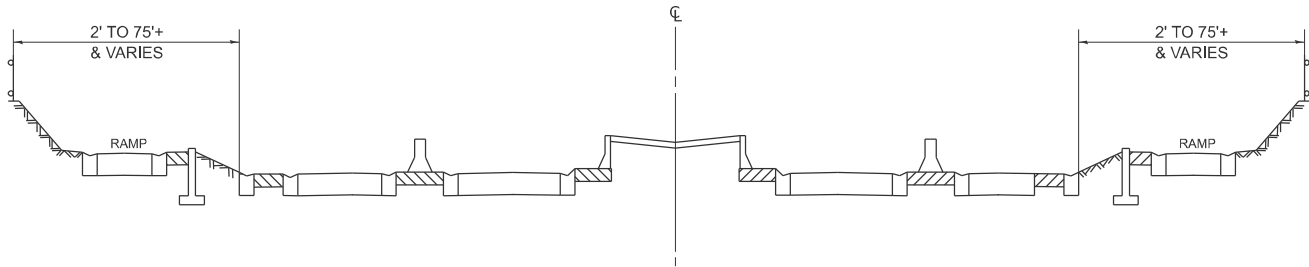
TYPICAL EXPRESSWAY CROSS-SECTION NO. 2



TYPICAL EXPRESSWAY CROSS-SECTION NO. 3



TYPICAL EXPRESSWAY CROSS-SECTION NO. 4



TYPICAL EXPRESSWAY CROSS-SECTION NO. 5

NOTES:

- SCOPE LIMITS: GRAFFITI REMOVAL IS RESTRICTED TO SHOULDERS, MEDIANS WITH FULL SHOULDERS, AND THE AREA FROM THE EDGE OF PAVEMENT TO THE STATE RIGHT-OF-WAY. TYPICAL REMOVAL LOCATIONS INCLUDE BRIDGE PIERS, ABUTMENTS, AND RETAINING WALLS.

OVERHEAD ACCESS: WHERE NEEDED, PROVIDE AND USE AERIAL LIFTS TO SAFELY ACCESS OVERHEAD SURFACES AT NO ADDITIONAL COST; TAKE PRECAUTIONS TO PREVENT PAINT OR DEBRIS FROM FALLING ONTO TRAFFIC.
- WORK ORDER CONTRACT: THIS PROJECT IS A WORK ORDER CONTRACT - LOCATIONS, QUANTITIES, AND DAILY WORK SCHEDULE ARE VARIABLE AND BASED ON WORK ORDERS ISSUED BY THE ENGINEER.
- DAILY COORDINATION: CONTRACTOR SHALL NOT BEGIN WORK WITHOUT AN ISSUED WORK ORDER AND SHALL COORDINATE THE DAILY WORK PLAN WITH THE ENGINEER; THE ENGINEER/PROJECT SUPERVISOR DETERMINES APPROVAL BASED ON CONDITIONS.
- SITE VERIFICATION: AT LEAST 24 HOURS BEFORE WORK, PHYSICALLY VERIFY EACH SITE TO DETERMINE METHOD OF GRAFFITI REMOVAL; SUBMIT ANY REQUIRED CATALOG CUTS/PRODUCT DATA FOR APPROVAL BEFORE USE.
- CLOSURE APPROVALS: REQUEST AND OBTAIN EXPRESSWAY TRAFFIC OPERATIONS APPROVAL AT IDOTLCS.COM. DAILY CLOSURE REQUESTS MUST BE SUBMITTED BY 9:00 AM THE BUSINESS DAY BEFORE.
- PEAK-HOUR RESTRICTIONS: SHOULDER CLOSURES ARE NOT PERMITTED MON-FRI FROM 5:00-9:00 AM AND 3:00-7:00 PM; ADDITIONAL RESTRICTIONS MAY APPLY FOR SPECIAL EVENTS.
- ADVERSE WEATHER: ALL LANE/SHOULDER CLOSURES SHALL BE IMMEDIATELY REMOVED DURING ADVERSE WEATHER (RAIN, WET PAVEMENT SPRAY, MIST, DRIZZLE, SLEET, SNOW, FOG) OR WHEN DETERMINED UNSAFE BY THE ENGINEER.
- MOVING OPERATIONS: CLEANING EQUIPMENT AND WORKERS SHALL MOVE IN THE SAME DIRECTION AS TRAFFIC AND REMAIN WITHIN BARRICADED WORK ZONES; NO CROSSING THE EXPRESSWAY.
- CONTRACTOR PARKING: NO PRIVATE VEHICLES IN THE WORK ZONE. DO NOT PARK EQUIPMENT/VEHICLES ON SHOULDERS OR IN THE MEDIAN DURING NON-WORKING HOURS UNLESS AT LOCATIONS APPROVED BY THE ENGINEER.
- HOLIDAY MORATORIUM: NO WORK ALLOWED ON EASTER, MEMORIAL DAY, INDEPENDENCE DAY, LABOR DAY, THANKSGIVING, OR CHRISTMAS EVE/NEW YEAR'S EVE UNLESS DESIGNATED AN EMERGENCY OR FIRST-PRIORITY CORRECTIVE ACTION BY THE DEPARTMENT.
- SNOW/ICE OPERATIONS: PROMPTLY REMOVE CLOSURES WHEN MAINTENANCE FORCES ARE DEPLOYED FOR SNOW AND ICE REMOVAL, AND AS OTHERWISE DIRECTED BY THE ENGINEER.

SUMMARY OF QUANTITIES

CODE NO.	ITEM	UNIT	URBAN	100 % STATE 0044
			TOTAL QUANTITIES	EXPRESSWAY
X0300062	GRAFFITI REMOVAL	SQ YD	20000	20000
67100100	MOBILIZATION	LUMP SUM	1	1

PLOT DATE = 8/19/2025	USER NAME = Jacek.Ejmont	DESIGNED -	REVISED -
		DRAWN -	REVISED -
		CHECKED -	REVISED -
	DATE -	REVISED -	

STATE OF ILLINOIS
DEPARTMENT OF TRANSPORTATION

TYPICAL CROSS SECTION
GENERAL NOTES AND SUMMARY OF QUANTITIES

SCALE: SHEET 1 OF 1 SHEETS STA. TO STA.

F.A.P RTE.	SECTION	COUNTY	TOTAL SHEETS	SHEET NO.
*VAR	2025-2043-GRF	COOK	7	3
CONTRACT NO. 80B73				
ILLINOIS FED. AID PROJECT				

*1) I-55 2) I-57 3) I-90 4) I-94

MODEL: North Area [Sheet]
FILE NAME: c:\p\work\pvt\illinois.gov_jack.ejmont@illinois.gov\d1152251\102726-shk-details.dgn



GRAFFITI REMOVAL

Kennedy Expressway

Interstate 90 (Kennedy) Expressway and all ramps from River Road to Ohio Street

ACCIDENT INVESTIGATION SITES:

- 1 INBOUND INTERSTATE 90/94 AT ADDISON STREET OFF RAMP.
- 2 INBOUND INTERSTATE 90/94 ALONG FULLERTON AVENUE UNDER INTERSTATE 90/94.
- 3 INBOUND INTERSTATE 90/94 IN THE OHIO STREET INFIELD.
- 4 INTERSTATE 90/94 AT POLK AVENUE.
- 5 OUTBOUND INTERSTATE 90/94 ALONG DIVISION STREET OFF RAMP.
- 6 OUTBOUND INTERSTATE 90/94 ALONG INTERSTATE 90/94 AT DAMEN AVENUE.
- 7 OUTBOUND INTERSTATE 90/94 ALONG FULLERTON AVENUE UNDER INTERSTATE 90/94.
- 8 OUTBOUND INTERSTATE 90/94 ALONG KIMBALL STREET OFF RAMP.
- 9 OUTBOUND INTERSTATE 94 ALONG FOSTER AVENUE OFF RAMP.
- 10 OUTBOUND INTERSTATE 90/94 JUST BEFORE LAWRENCE AVENUE OFF RAMP.

DISTRICT NO. 1

- STATE HIGHWAYS & EXPRESSWAYS
WITHIN STATE JURISDICTION
(EXCEPT TOLLWAYS)
- STATE HIGHWAYS & EXPRESSWAYS
TO BE CLEANED OF GRAFFITI
- FUTURE HIGHWAYS
- VARIOUS AGENCIES HIGHWAYS

USER NAME = Jacek.Ejmont	DESIGNED -	REVISED -
	DRAWN -	REVISED -
	CHECKED -	REVISED -
PLOT DATE = 8/19/2025	DATE -	REVISED -

STATE OF ILLINOIS
DEPARTMENT OF TRANSPORTATION

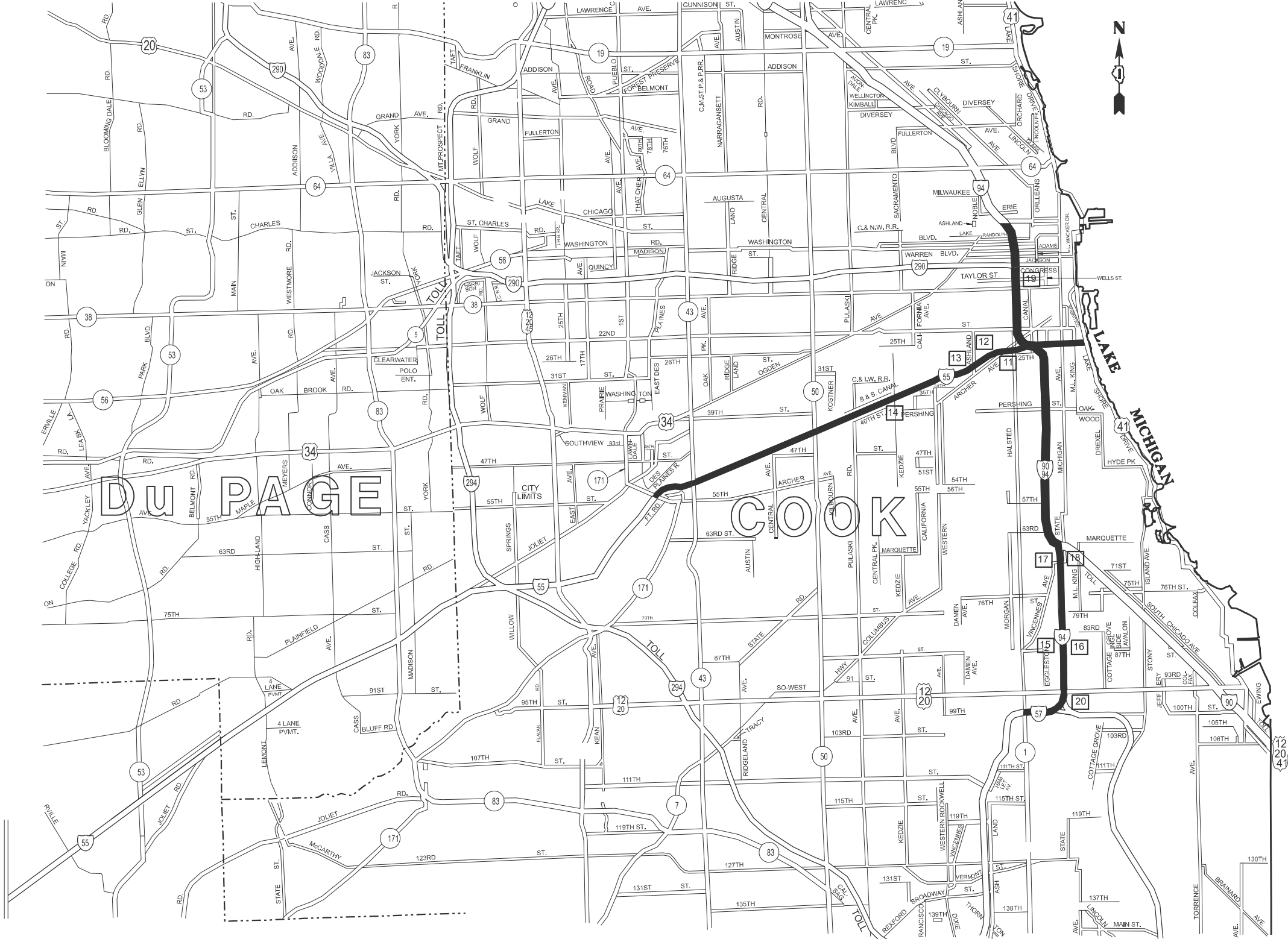
EXPRESSWAY GRAFFITI CLEANING LOCATION MAP
NORTH AREA

SCALE: SHEET 1 OF 3 SHEETS STA. TO STA.

F.A.P RTE.	SECTION	COUNTY	TOTAL SHEETS	SHEET NO.
*VAR	2025-2043-GRF	COOK	7	4
CONTRACT NO. 80B73				

*1) I-55 2) I-57 3) I-90 4) I-94

MODEL: Central Area [Sheet]
FILE NAME: c:\pawork\work\illinois.gov\jacek.ejmont\illinois.gov\d1152251D102726-shk-details.dgn



GRAFFITI REMOVAL

Stevenson Expressway
Interstate 55 (Stevenson) Expressway and all ramps from IL-171 to Lake Shore Drive.

Dan Ryan Expressway
Interstate 90/94 (Dan Ryan) from Ohio Street to Interstate 57 and Bishop Ford Split;
including Interstate 57 to Halsted Street.

ACCIDENT INVESTIGATION SITES:
FOR LOCATONS 1-10, SEE INNER CITY EXPRESSWAY (NORTH SECTION)

- 11 INBOUND INTERSTATE 55 AT HALSTED STREET
- 12 OUTBOUND INTERSTATE 55 AT THROOP STREET
- 13 INBOUND INTERSTATE 55 AT WOOD STREET. (LOCATED UNDER I-55)
- 14 OUTBOUND INTERSTATE 55 AT KEDZIE AVENUE
- 15 INTERSTATE 90/94 AT 87th STREET (NORTHBOUND AND SOUTHBOUND)
- 16 INTERSTATE 90/94 AT 71st STREET (NORTHBOUND AND SOUTHBOUND)
- 17 INTERSTATE 90/94 AT POLK STREET
- 18 INTERSTATE 90/94 AT KING DRIVE
- 19 INTERSTATE 90/94 AT POLK STREET
- 20 INTERSTATE 90/94 AT KING DRIVE

DISTRICT NO. 1

- STATE HIGHWAYS & EXPRESSWAYS
WITHIN STATE JURISDICTION
(EXCEPT TOLLWAYS)
- STATE HIGHWAYS & EXPRESSWAYS
TO BE CLEANED OF GRAFFITI
- FUTURE HIGHWAYS
- VARIOUS AGENCIES HIGHWAYS

USER NAME = Jacek.Ejmont	DESIGNED -	REVISED -
	DRAWN -	REVISED -
	CHECKED -	REVISED -
PLOT DATE = 8/19/2025	DATE -	REVISED -

STATE OF ILLINOIS
DEPARTMENT OF TRANSPORTATION

EXPRESSWAY GRAFFITI CLEANING LOCATION MAP CENTRAL AREA			
SCALE:	SHEET 2	OF 3	SHEETS
	TO STA.		

F.A.P RTE.	SECTION	COUNTY	TOTAL SHEETS	SHEET NO.
*VAR	2025-2043-GRF	COOK	7	5
CONTRACT NO. 80B73				
ILLINOIS FED. AID PROJECT				

*1) I-55 2) I-57 3) I-90 4) I-94

COOK

WILL

INDIANA



GRAFFITI REMOVAL

Bishop Ford/Kingery Expressway

I-94 (Bishop Ford) from I-57/I-94 Junction to 130th including Stony Island Ave from I-94 to US-12 (95th St); and 103rd St from Cottage Grove Ave to Stony Island Ave

I-57 Expressway

Interstate 57 from Halsted Street to 147th / Sibley Blvd (IL 83)

ACCIDENT INVESTIGATION SITES:

- 21 - 23 INTERSTATE 57-3 LOCATIONS IN THE MEDIAN BETWEEN HALSTED AND 147th ST.
- 24 OUTBOUND INTERSTATE 57 AT 111th STREET EXIT RAMP
- 25 - 26 INTERSTATE 57 - 2 LOCATIONS ON THE 167th STREET RAMPS
- 27 INTERSTATE 57 - IN THE MEDIAN AT 119th STREET

DISTRICT NO. 1

- STATE HIGHWAYS & EXPRESSWAYS WITHIN STATE JURISDICTION (EXCEPT TOLLWAYS)
- STATE HIGHWAYS & EXPRESSWAYS TO BE CLEANED OF GRAFFITI
- FUTURE HIGHWAYS
- VARIOUS AGENCIES HIGHWAYS

STATE OF ILLINOIS
DEPARTMENT OF TRANSPORTATION

EXPRESSWAY GRAFFITI CLEANING LOCATION MAP
SOUTH AREA

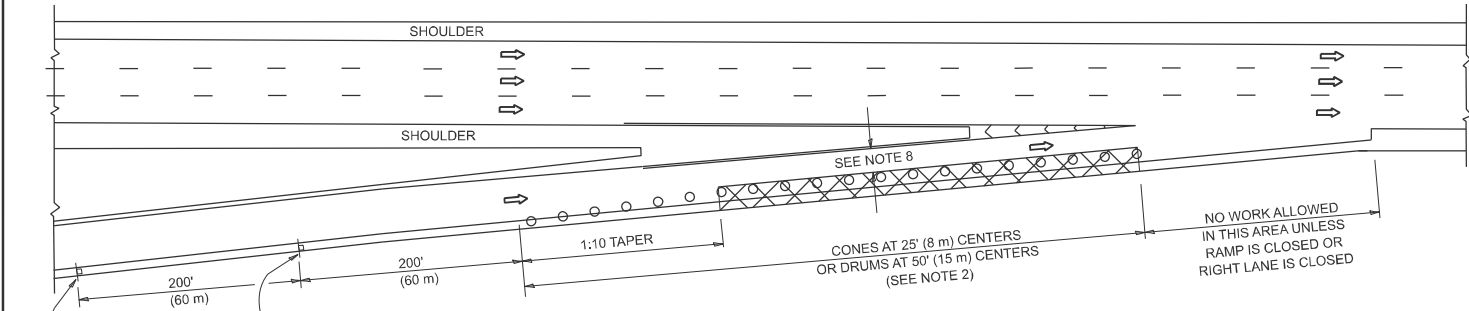
F.A.P RTE.	SECTION	COUNTY	TOTAL SHEETS	SHEET NO.
*VAR	2025-2043-GRF	COOK	7	6
CONTRACT NO. 80B73				
ILLINOIS		FED. AID PROJECT		

SCALE: SHEET 3 OF 3 SHEETS STA. TO STA.

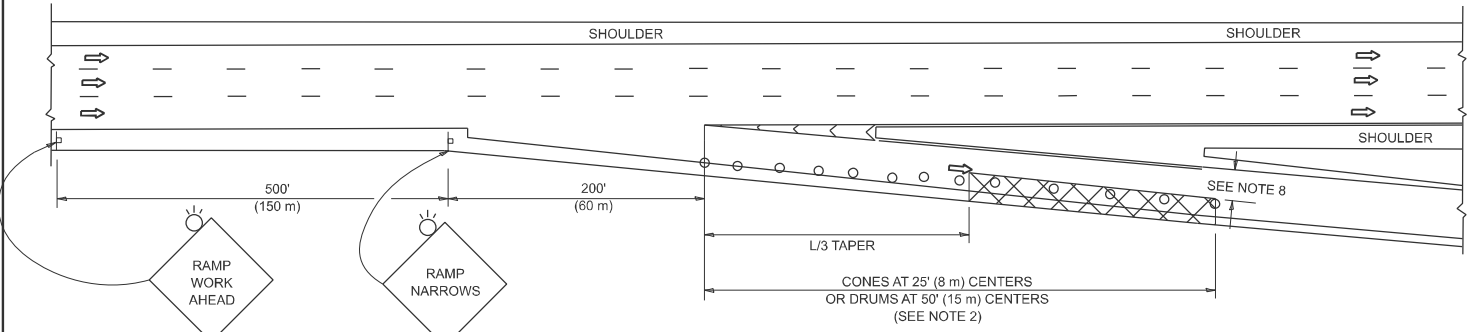
*1) I-55 2) I-57 3) I-90 4) I-94

USER NAME = Jacek.Ejmont	DESIGNED -	REVISED -
	DRAWN -	REVISED -
	CHECKED -	REVISED -
PLOT DATE = 8/19/2025	DATE -	REVISED -

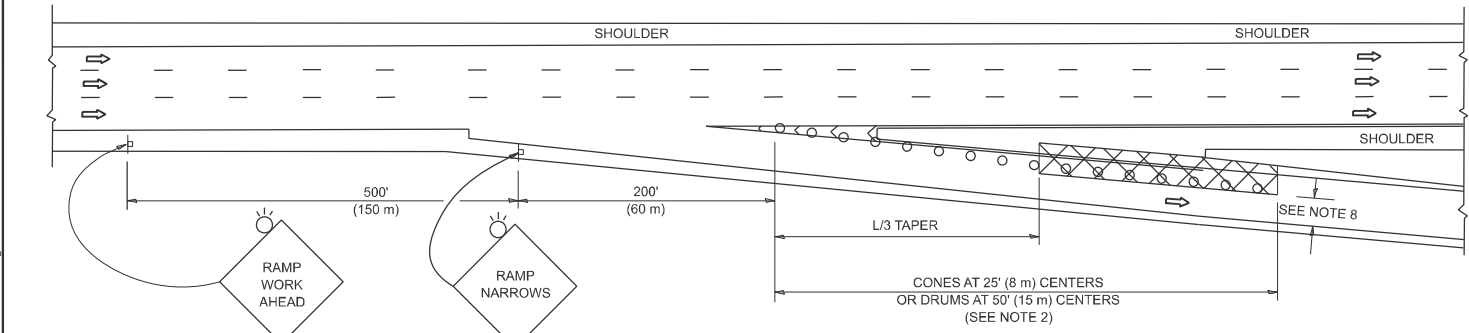
PARTIAL RAMP CLOSURE DETAILS



TYPICAL ENTRANCE RAMP



TYPICAL EXIT RAMP



TYPICAL EXIT RAMP

SYMBOLS

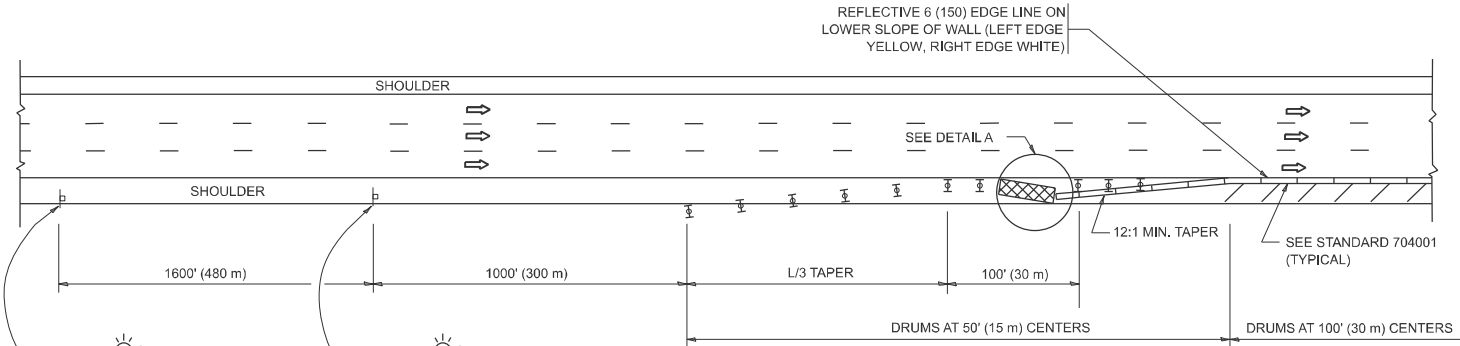
- ACTIVE WORK AREA
- SIGN ON PORTABLE OR PERMANENT SUPPORT
- FLAGGER WITH CONTROL SIGN
- TYPE II BARRICADE OR DRUM
- CONE, DRUM OR BARRICADE
- IMPACT ATTENUATOR OF TYPE AND TEST LEVEL SPECIFIED

GENERAL NOTES:

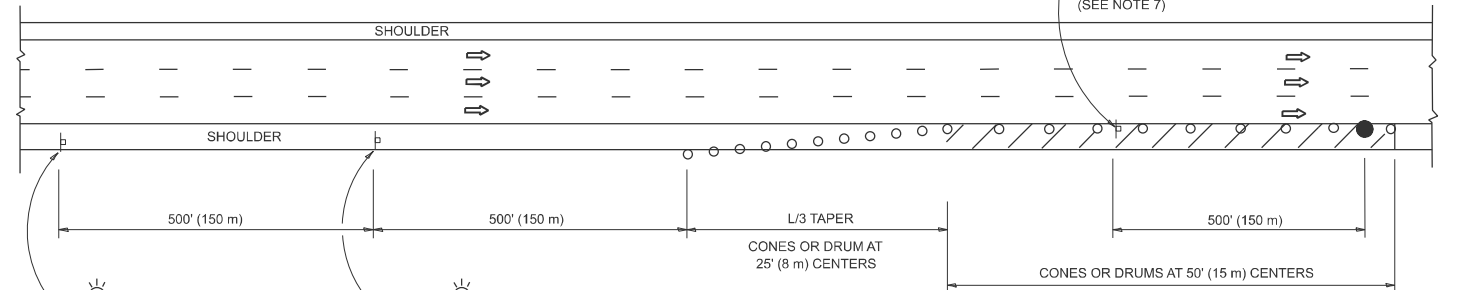
- THE "L" DISTANCE EQUALS:

SPEED LIMIT	FORMULAS
45 mph (80 km/h)	METRIC ENGLISH
OR GREATER:	$L=0.65(W)(S)$ $L=(W)(S)$
W = WIDTH OF OFFSET IN FEET (METERS)	
S = NORMAL POSTED SPEED MPH (KM/H)	
- TYPE II BARRICADES OR DRUMS ARE REQUIRED FOR ALL NIGHTTIME CLOSURES. TYPE II BARRICADES OR DRUMS WITH MONODIRECTIONAL STEADY BURN LIGHTS ARE REQUIRED FOR DELINEATING OBSTACLES, EXCAVATIONS, OR HAZARDS EXCEEDING 100 FT (30m) IN LENGTH AT NIGHT.
- ALL SIGNS SHALL BE POST MOUNTED IF THE CLOSURE TIME EXCEEDS FOUR DAYS.
- FLASHING LIGHTS SHALL BE USED DURING THE HOURS OF DARKNESS AND SHALL BE INSTALLED ABOVE THE FIRST TWO SETS OF SIGNS.

SHOULDER CLOSURE DETAILS

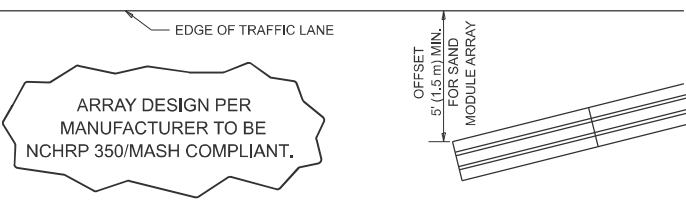


PERMANENT SHOULDER CLOSURE



TEMPORARY SHOULDER CLOSURE

- THIS DETAIL IS USED WHERE:
- VEHICLES, EQUIPMENT, WORKERS OR THEIR ACTIVITIES ENCR OACH IN AN AREA CLOSER THAN 15' (4.5 m) TO THE EDGE OF PAVEMENT FOR A PERIOD IN EXCESS OF 15 MINUTES.



DETAIL "A"
IMPACT ATTENUATOR, TEMPORARY
(SEE NOTE 5)

- THE IMPACT ATTENUATOR, TEMPORARY IS NOT REQUIRED WHEN THE TEMPORARY CONCRETE BARRIER WALL IS PROTECTED BY OR IS TIED INTO THE EXISTING GUARDRAIL. IF OFFSET IS LESS THAN 5 FEET USE NARROW USE TYPE DEVICE TO MEET NCHRP350/MASH.
- AUTHORIZATION FROM THE DISTRICT'S BUREAU OF TRAFFIC IS REQUIRED FOR ALL FREEWAY CLOSURES.
- THE FLAGGER AND FLAGGER SIGN ARE REQUIRED AT THE ABOVE WORK SITES WHEN:
 - FOUR OR MORE WORK VEHICLES ENTER THE TRAFFIC LANES IN A ONE HOUR PERIOD.
 - THE WORK AVTIVITY REQUIRES FREQUENT ENCR OACHMENT INTO THE LANE OPEN TO TRAFFIC.THE FLAGGER SHALL BE STATIONED APPROXIMATELY 100' (30 m) TO 200' (60 m) IN ADVANCE OF THE WORKERS.
- 12' MIN. WIDTH TANGENT SECTION
16' MIN. WIDTH CURVE SECTION.
- TEMPORARY SHOULDER AND NON-SYSTEM INTERCHANGE PARTIAL RAMP CLOSURES ARE ALLOWED WEEKDAYS BETWEEN 9:00 A.M. AND 3:00 P.M. AND BETWEEN 7:00 P.M. AND 5:00 A.M. OR AS APPROVED BY THE EXPRESSWAY TRAFFIC OPERATIONS ENGINEER. PERMANENT SHOULDER AND PARTIAL RAMP CLOSURES WILL ONLY BE PERMITTED IF CALLED FOR IN THE PLANS OR AS APPROVED BY THE EXPRESSWAY OPERATIONS ENGINEER.

ALL DIMENSIONS ARE IN INCHES (MILLIMETERS)
UNLESS OTHERWISE SHOWN.

STATE OF ILLINOIS
DEPARTMENT OF TRANSPORTATION

TRAFFIC CONTROL DETAILS FOR FREEWAY
SHOULDER CLOSURES AND PARTIAL RAMP CLOSURES

SCALE: NONE SHEET 1 OF 1 SHEETS STA. TO STA.

F.A.P RTE.	SECTION	COUNTY	TOTAL SHEETS	SHEET NO.
*VAR	2025-2043-GRF	COOK	7	7
TC-17		CONTRACT NO. 80B73		
ILLINOIS		FED. AID PROJECT		

*1) I-55 2) I-57 3) I-90 4) I-94