

STATE OF ILLINOIS
DEPARTMENT OF TRANSPORTATION

F.A.P. KTE.	SECTION	COUNTY	TOTAL SHEETS	SHEET NO.
856	2025-1087-RS	WILL	24	1
		ILLINOIS	CONTRACT NO. 80B14	

D-91-167-25

FOR INDEX OF SHEETS, SEE SHEET NO. 2

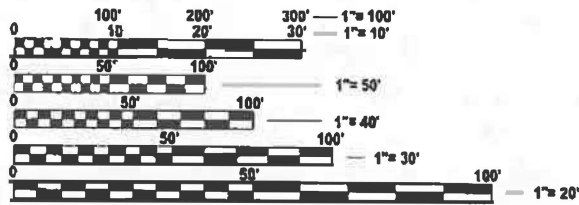
THIS IMPROVEMENT IS LOCATED IN THE CITY OF JOLIET

TRAFFIC DATA
US 6 (CHANNAHON ROAD)
2023 ADT: 10,250
POSTED SPEED: 55 MPH

PROPOSED
HIGHWAY PLANS

FAP ROUTE 856: US 6 (CHANNAHON RD.)
FROM TERRY AVE TO IL-7 (LARKIN AVE)
SECTION 2025-1087-RS
PROJECT: NHPP-5ST1(012)
DESIGNED OVERLAY
WILL COUNTY

C-91-247-25

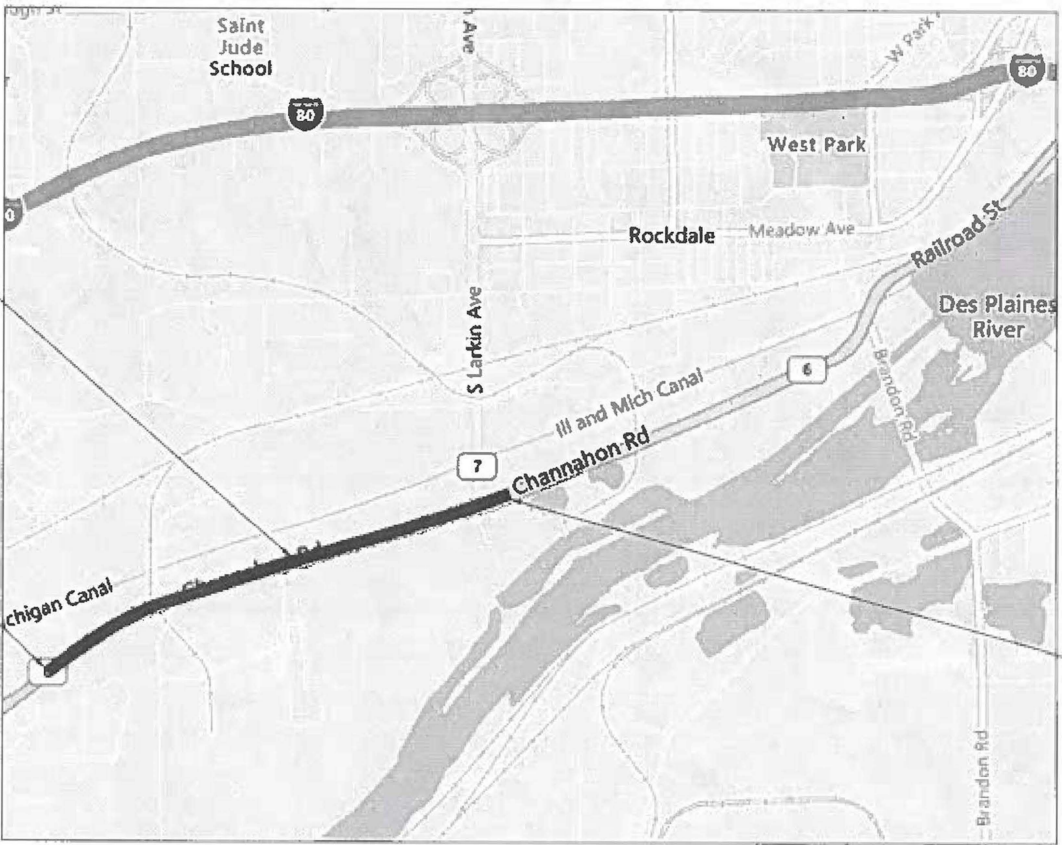


FULL SIZE PLANS HAVE BEEN PREPARED USING STANDARD
ENGINEERING SCALES. REDUCED SIZED PLANS WILL NOT
CONFORM TO STANDARD SCALES. IN MAKING MEASUREMENTS
ON REDUCED PLANS, THE ABOVE SCALES MAY BE USED.

J.U.L.I.E.
JOINT UTILITY LOCATION INFORMATION FOR EXCAVATION
1-800-892-0123
OR 811

PROJECT ENGINEER: RODRIGO LEDEZMA (847) 705-4580
PROJECT MANAGER: J. ALAIN MIDY (847) 221-3056

CONTRACT NO. 80B14



JOLIET TOWNSHIP

GROSS LENGTH = 6,285 FT. = 1.19 MILE
NET LENGTH = 6,285 FT. = 1.19 MILE

STATE OF ILLINOIS
DEPARTMENT OF TRANSPORTATION

SUBMITTED Aug 8th 2025 12:25 PM REGIONAL ENGINEER

October 3, 2025 Scott A. Etkin ENGINEER OF DESIGN AND ENVIRONMENT

October 3, 2025 Quarry DIRECTOR OF HIGHWAYS PROJECT IMPLEMENTATION

PRINTED BY THE AUTHORITY
OF THE STATE OF ILLINOIS

INDEX OF SHEETS

STATE STANDARDS

GENERAL NOTES

SHEET NO.

DESCRIPTION

STANDARD NO.

DESCRIPTION

1

TITLE SHEET

000001-08

STANDARD SYMBOLS, ABBREVIATIONS, AND PATTERNS

1. BEFORE STARTING ANY EXCAVATION, THE CONTRACTOR SHALL CALL "JULIE AT (800) 892-0123 OR 811 FOR FIELD LOCATIONS OF BURIED ELECTRIC, TELEPHONE AND GAS FACILITIES, (48 HOURS NOTIFICATION IS REQUIRED).

2

INDEX OF SHEETS, STATE STANDARDS, AND GENERAL NOTES

604001-05

FRAME AND LIDS TYPE 1

2. THE CONTRACTOR SHALL COORDINATE CONSTRUCTION ACTIVITIES WITH UTILITY COMPANIES, AND THE CITY OF JOLIET.

3 - 4

SUMMARY OF QUANTITIES

606006-04

OUTLETS FOR CONCRETE CURB AND GUTTER, TY B-6.24

3. THE CONTRACTOR WILL NOT BE ALLOWED TO SET UP A YARD OR FIELD OFFICE ON STATE PROPERTY WITHOUT WRITTEN PERMISSION FROM THE DEPARTMENT.

5

EXISTING AND PROPOSED CROSS SECTIONS

701101-05

OFF-RD OPERATIONS, MULTILANE, 15' TO 24' FROM PAVEMENT EDGE

4. BEFORE BEGINNING ANY WORK, THE CONTRACTOR SHALL RETAIN AND RECORD FOR FUTURE REFERENCE, ALL EXISTING PAVEMENT MARKING LINES (AND RAISED REFLECTIVE PAVEMENT MARKERS) IN ORDER THAT THESE LOCATIONS CAN BE RE-ESTABLISHED FOR STRIPING. EXACT LOCATIONS OF ALL PAVEMENT MARKINGS SHALL BE AS DIRECTED BY THE ENGINEER.

6 - 8

ROADWAY PLANS

701106-02

OFF-RD OPERATIONS, MULTILANE, MORE THAN 15' AWAY

5. BUTT JOINTS WILL BE INSTALLED AT THE ENDS OF ALL RESURFACING (WHERE RESURFACING MEETS EXISTING PAVEMENT) ACCORDING TO THE "BUTT JOINT AND HOT-MIX ASPHALT TAPER DETAILS" SHEET INCLUDED IN THE PLANS, UNLESS OTHERWISE SPECIFIED.

9

DRAINAGE DETAIL

701421-08

LANE CLOSURE MULTILANE DAY OPERATIONS ONLY 45-55 MPH

6. THE RESIDENT ENGINEER SHALL CONTACT ERIC CAMPOS AREA TRAFFIC FIELD TECHNICIAN, AT ERIC.CAMPOS@ILLINOIS.GOV, A MINIMUM OF TWO (2) WEEKS PRIOR TO THE PLACEMENT OF PERMANENT PAVEMENT MARKINGS.

10 - 12

DETECTOR LOOP PLANS

701426-09

LANE CLOSURE MULTILANE INTERMITTENT OR MOVING OPERATIONS 45PMH OR MORE

7. FRAMES AND GRATES ADJUSTMENT OF PRIVATE UTILITIES WITHIN THE PROJECT LIMITS SHALL BE DONE BY THEIR RESPECTIVE OWNERS AND ARE NOT PART OF THIS CONTRACT.

13

FRAMES AND LIDS ADJUSTMENT WITH MILLING (BD-08)

701601-09

URBAN LANE CLOSURE MULTILANE, 1W 2W WITH NONTRAVERSABLE MEDIAN

8. THE CONTRACTOR SHALL CONTACT THE DISTRICT TRAFFIC CONTROL SUPERVISOR AT KALPANA.KANNAN-HOSADURGA@ILLINOIS.GOV A MINIMUM OF 72 HOURS IN ADVANCE OF BEGINNING WORK.

14

PAVEMENT PATCHING FOR HMA SURFACED PAVEMENT (BD-22)

701701-10

URBAN LANE CLOSURE, MULTILANE INTERSECTION

9. IT SHALL BE THE CONTRACTOR'S RESPONSIBILITY TO VERIFY ALL DIMENSIONS AND CONDITIONS EXISTING IN THE FIELD PRIOR TO ORDERING MATERIALS AND BEGINNING CONSTRUCTION. THIS SHALL INCLUDE LOCATING THE MAST ARM AND FOUNDATIONS AND VERIFYING THE MAST ARM LENGTHS.

15

CURB AND GUTTER REMOVAL AND REPLACEMENT (BD-24)

701901-10

TRAFFIC CONTROL DEVICES

10. RAISED REFLECTIVE PAVEMENT MARKERS SHALL BE PLACED THROUGHOUT THE IMPROVEMENT ACCORDING TO THE DISTRICT STANDARDS AS NOTED IN THE DETAIL.

16

BUTT JOINT AND HMA TAPER DETAILS (BD-32)

886001-01

DETECTOR LOOP INSTALLATIONS

11. ALL MILLED SURFACES SHALL BE A UNIFORM CROSS SLOPE PER LANE AND FREE OF RIDGES BETWEEN PASSES. ANY DEVIATIONS SHALL BE CORRECTED AT NO COST TO THE DEPARTMENT.

17

DETECTOR LOOP INSTALLATION DETAIL FOR ROADWAY SURFACING (TS-07)

12. ALL PAVEMENT PATCHING LOCATIONS WILL BE DETERMINED IN THE FIELD BY THE ENGINEER.

18

TRAFFIC CONTROL AND PROTECTION FOR SIDEROADS, INTERSECTIONS, AND DRIVEWAYS (TC-10)

13. LOCATION OF COMBINATION CONCRETE CURB AND GUTTER REMOVAL AND REPLACEMENT, WILL BE DETERMINED IN THE FIELD BY THE ENGINEER.

19

RAISED REFLECTIVE PAVEMENT MARKERS (SNOWPLOW RESISTANT) (TC-11)

14. TEN (10) FOOT TRANSITIONS SHALL BE USED TO MATCH PROPOSED CURB AND GUTTER AND MEDIAN ITEMS OF WORK TO EXISTING CURBS AND GUTTER AND MEDIANS IN THE FIELD, UNLESS OTHERWISE SHOWN.

20

DISTRICT ONE PAVEMENT MARKINGS (TC-13)

15. DRAINAGE ADJUSTMENT OR RECONSTRUCTION LOCATIONS WILL BE DETERMINED IN THE FIELD BY THE ENGINEER.

21

TRAFFIC CONTROL AND PROTECTIONS AT TURN BAYS (TO REMAIN OPEN TO TRAFFIC) (TC-14)

16. EXISTING BROKEN FRAMES AND LIDS SHALL BE REMOVED AND DISPOSED OF BY THE CONTRACTOR AND SHALL BE REPLACED AS DIRECTED BY THE ENGINEER. REPLACEMENT FRAMES AND LIDS WILL BE PAID FOR ACCORDING TO ARTICLE 109.04 OF THE STANDARD SPECIFICATIONS UNLESS A SEPARATE PAY ITEM HAS BEEN PROVIDED.

22

SHORT TERM PAVEMENT MARKING LETTERS AND SYMBOLS (TC-16)

17. PAVEMENT MARKING TAPE, TYPE IV SHALL BE USED FOR SHORT TERM PAVEMENT MARKINGS ON ALL FINAL SURFACES.

23

ARTERIAL ROAD INFORMATION SIGNING (TC-22)

18. OVERNIGHT LANE CLOSURES SHALL NOT BE ALLOWED FOR REHABILITATION PROJECTS INVOLVING DAYTIME MILLING AND RESURFACING OPERATIONS AND CLASS D PATCHING UNLESS OTHER CONDITIONS WARRANT EXTENDED LANE CLOSURES AS DETERMINED AND APPROVED IN WRITING BY THE ENGINEER OR AS PROVIDED FOR IN THE CONTRACT SPECIFICATIONS.

24

DRIVEWAY ENTRANCE SIGNING (TC-26)

FILE NAME: C:\p\proj\wmdoc\m1087rs\p\justin.king\m1087rs.dwg 1/22/2025 10:23:59 AM

USER NAME = justin.king

DESIGNED -

REVISED -

DRAWN -

REVISED -

CHECKED -

REVISED -

PLOT DATE = 8/13/2025

DATE -

REVISED -

STATE OF ILLINOIS

DEPARTMENT OF TRANSPORTATION

INDEX OF SHEETS, STATE STANDARDS, AND GENERAL NOTES

US 6 (CHANNAHON RD.) - TERRY AVE. TO IL-7 (LARKIN AVE.)

SCALE: SHEET 1 OF 1 SHEETS STA. TO STA.

F.A.P RTE. 856

SECTION 2025-1087-RS

COUNTY WILL

TOTAL SHEETS 24

SHEET NO. 2

CONTRACT NO. 80B14

MODEL: SOQ01 [Sheet]
FILE NAME: c:\p\work\pwid\illinois.gov_justin.king@illinois.gov\d1122512\ID116725-sh-SOQ.dgn

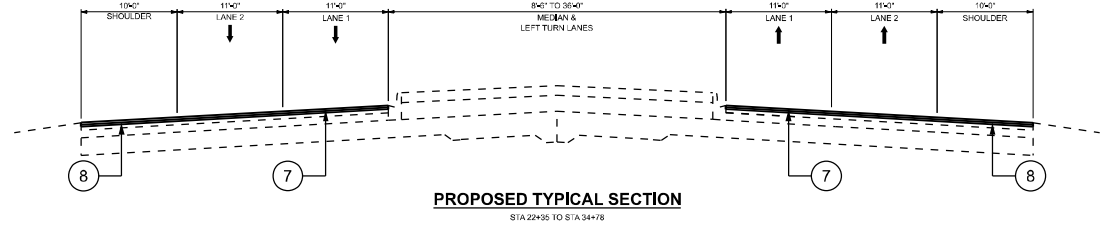
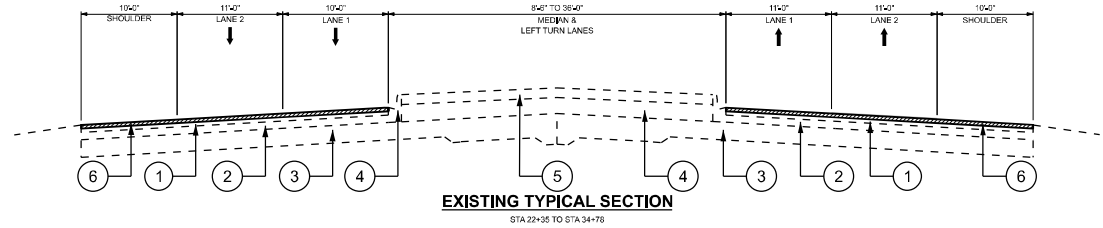
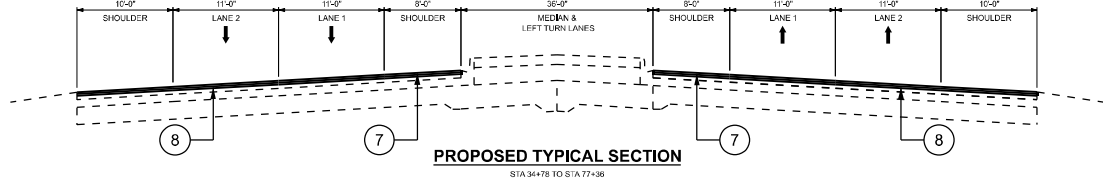
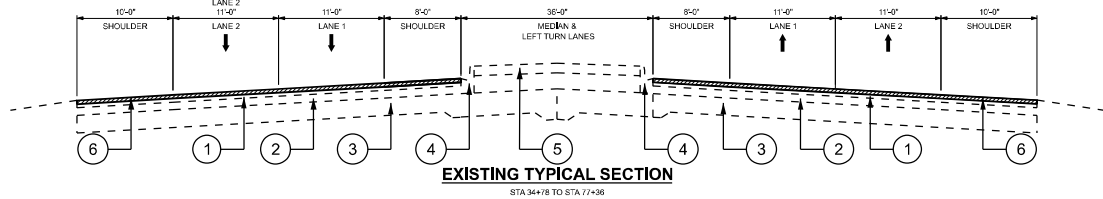
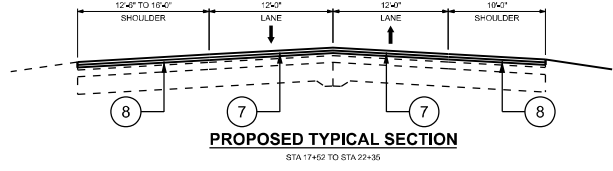
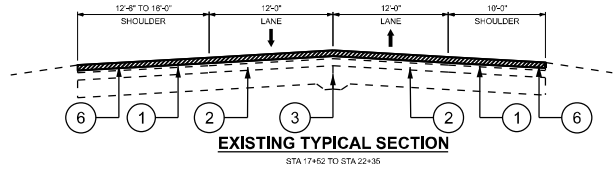
SUMMARY OF QUANTITIES					TYPE CODE					
					URBAN	URBAN	URBAN	URBAN	URBAN	URBAN
					ROADWAY	ROADWAY				
					80% FED 20% STATE	100% STATE				
	Code No.	Item	Unit	Total Quantity	0005	0005				
	20200100	EARTH EXCAVATION	CU YD	10	10					
	21101615	TOPSOIL FURNISH AND PLACE, 4"	SQ YD	1034	1034					
	25000400	NITROGEN FERTILIZER NUTRIENT	POUND	19	19					
	25000500	PHOSPHORUS FERTILIZER NUTRIENT	POUND	19	19					
	25000600	POTASSIUM FERTILIZER NUTRIENT	POUND	19	19					
	25200110	SODDING, SALT TOLERANT	SQ YD	1034	1034					
	25200200	SUPPLEMENTAL WATERING	UNIT	10	10					
	40600290	BITUMINOUS MATERIALS (TACK COAT)	POUND	36202	36202					
	40600370	LONGITUDINAL JOINT SEALANT	FOOT	11236	11236					
	40600400	MIXTURE FOR CRACKS, JOINTS, AND FLANGEWAYS	TON	81	81					
	40600982	HOT-MIX ASPHALT SURFACE REMOVAL - BUTT JOINT	SQ YD	728	728					
	40602985	HOT-MIX ASPHALT BINDER COURSE, IL-9.5, N70	TON	6007	6007					
	40605026	POLYMERIZED HOT-MIX ASPHALT SURFACE COURSE, STONE MATRIX ASPHALT, 9.5, MIX "F", N80	TON	5257	5257					
	44000164	HOT-MIX ASPHALT SURFACE REMOVAL, 3 3/4"	SQ YD	53633	53633					
	44003510	MEDIAN REMOVAL PARTIAL DEPTH	SQ FT	10209	10209					
	44201785	CLASS D PATCHES, TYPE I, 12 INCH	SQ YD	135	135					
	44201789	CLASS D PATCHES, TYPE II, 12 INCH	SQ YD	1073	1073					
	44201794	CLASS D PATCHES, TYPE III, 12 INCH	SQ YD	805	805					
	44201796	CLASS D PATCHES, TYPE IV, 12 INCH	SQ YD	671	671					
	60618300	CONCRETE MEDIAN SURFACE, 4 INCH	SQ FT	10209	10209					
	64200116	SHOULDER RUMBLE STRIPS, 16 INCH	FOOT	14453	14453					
* SPECIALTY ITEM										

SUMMARY OF QUANTITIES					TYPE CODE					
					URBAN	URBAN	URBAN	URBAN	URBAN	URBAN
					ROADWAY	ROADWAY				
					80% FED 20% STATE	100% STATE				
	Code No.	Item	Unit	Total Quantity	0005	0005				
*	66900200	NON-SPECIAL WASTE DISPOSAL	CU YD	10	10					
	67100100	MOBILIZATION	L SUM	1	1					
	70100310	TRAFFIC CONTROL AND PROTECTION, STANDARD 701421	L SUM	1	1					
	70102630	TRAFFIC CONTROL AND PROTECTION, STANDARD 701601	L SUM	1	1					
	70102635	TRAFFIC CONTROL AND PROTECTION, STANDARD 701701	L SUM	1	1					
	70300100	SHORT TERM PAVEMENT MARKING	FOOT	16138	16138					
	70300150	SHORT TERM PAVEMENT MARKING REMOVAL	SQ FT	5379	5379					
	70300211	TEMPORARY PAVEMENT MARKING LETTERS AND SYMBOLS - PAINT	SQ FT	512	512					
	70300221	TEMPORARY PAVEMENT MARKING - LINE 4"- PAINT	FOOT	22434	22434					
	70300241	TEMPORARY PAVEMENT MARKING - LINE 6"- PAINT	FOOT	1695	1695					
	70300251	TEMPORARY PAVEMENT MARKING - LINE 8"- PAINT	FOOT	3521	3521					
	70300261	TEMPORARY PAVEMENT MARKING - LINE 12"- PAINT	FOOT	1624	1624					
	70300281	TEMPORARY PAVEMENT MARKING - LINE 24"- PAINT	FOOT	329	329					
	72400205	REMOVE AND RELOCATE SIGN PANEL ASSEMBLY - TYPE A	EACH	1	1					
*	78000100	THERMOPLASTIC PAVEMENT MARKING - LETTERS AND SYMBOLS	SQ FT	552	552					
*	78000200	THERMOPLASTIC PAVEMENT MARKING - LINE 4"	FOOT	22434	22434					
*	78000400	THERMOPLASTIC PAVEMENT MARKING - LINE 6"	FOOT	1695	1695					
*	78000500	THERMOPLASTIC PAVEMENT MARKING - LINE 8"	FOOT	3521	3521					
*	78000600	THERMOPLASTIC PAVEMENT MARKING - LINE 12"	FOOT	1624	1624					
*	78000650	THERMOPLASTIC PAVEMENT MARKING - LINE 24"	FOOT	329	329					
*	78100100	RAISED REFLECTIVE PAVEMENT MARKER	EACH	132	132					

				STATE OF ILLINOIS DEPARTMENT OF TRANSPORTATION				SUMMARY OF QUANTITIES US 6 (CHANNAHON RD.) - TERRY AVE. TO IL-7 (LARKIN AVE.)				F.A.P RTE.	SECTION	COUNTY	TOTAL SHEETS	SHEET NO.
												856	2025-1087-RS	WILL	24	3
												CONTRACT NO. 80B14				
												ILLINOIS		FED. AID PROJECT		
PLOT DATE = 8/15/2025			DATE -	DESIGNED -	REVISED -	SCALE:		SHEET 1	OF 2	SHEETS	STA.	TO STA.				
USER NAME = justin.king			DRAWN -	DESIGNED -	REVISED -											
			CHECKED -	DESIGNED -	REVISED -											
			DATE -	DESIGNED -	REVISED -											

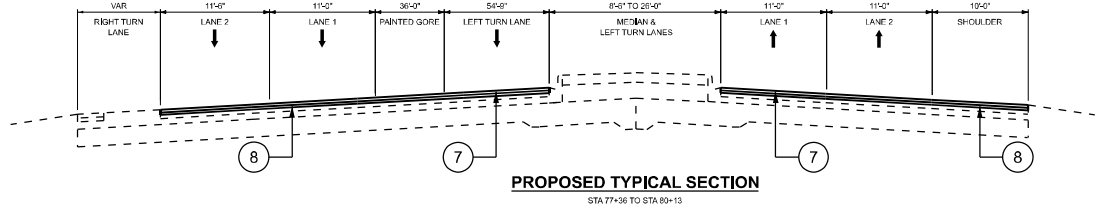
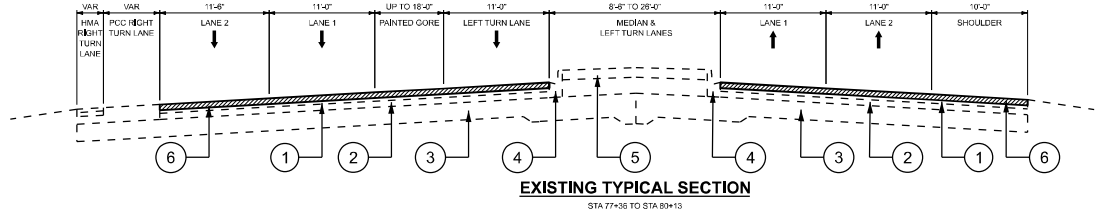
[illegible][illegible]

MODEL: TypicalSections01 [Sheet]
FILE NAME: c:\pawork\work\illinois.gov_justin.king\1122512\116725-shh-typical.dgn



NOTE:

1. THE CONTRACTOR SHALL MILL BEFORE PATCHING
2. THE LONGITUDINAL JOINT SEALANT SHALL BE PLACED ON THE MILLED SURFACE



LEGEND

- 1 EXISTING HOT-MIX ASPHALT PAVEMENT 7"±
- 2 EXISTING PORTLAND CEMENT CONCRETE BASE 8½"±
- 3 EXISTING SUBBASE
- 4 EXISTING CURB AND GUTTER
- 5 EXISTING RAISED MEDIAN
- 6 PROPOSED HOT-MIX ASPHALT REMOVAL, 3¾"
- 7 HOT-MIX ASPHALT SURFACE COURSE, IL-9.5, MIX "F", N80, 1¾"
- 8 HOT-MIX ASPHALT BINDER COURSE, IL-9.5, N70, 2"

HOT-MIX ASPHALT MIXTURE REQUIREMENTS		QMP
MIXTURE TYPE	AIR VOIDS @ Ndesign	
PAVEMENT RESURFACING (DESIGNED OVERLAY)		
HOT-MIX ASPHALT SURFACE COURSE, IL-9.5, MIX "F", N80, 1¾"	3.5% @ 80 Gyr.	QCP
HOT-MIX ASPHALT BINDER COURSE, IL-9.5, N70, 2"	4% @ 70 Gyr.	QCP
TEMPORARY RAMP, SPECIAL		
HOT-MIX ASPHALT BINDER COURSE, IL-9.5, N70	4% @ 70 Gyr.	QC/QA
PATCHING		
CLASS D PATCHES (HMA BINDER IL-19.0)	4% @ 70 Gyr.	QC/QA
QMP Designations: Quality Control/Quality Assurance (QC/QA); Quality Control for Performance (QCP); Pay for Performance (PFP)		

THE UNIT WEIGHT USED TO CALCULATE ALL HMA SURFACE MIXTURE QUANTITIES IS 112 LBS/SQ YD/IN.

THE "AC TYPE" FOR POLYMERIZED HMA MIXES SHALL BE "SBS/SBR PG 76-22" AND FOR NON-POLYMERIZED HMA THE "AC TYPE" SHALL BE "PG 64-22" UNLESS MODIFIED BY RECLAIMED MATERIALS SPECIFICATIONS.

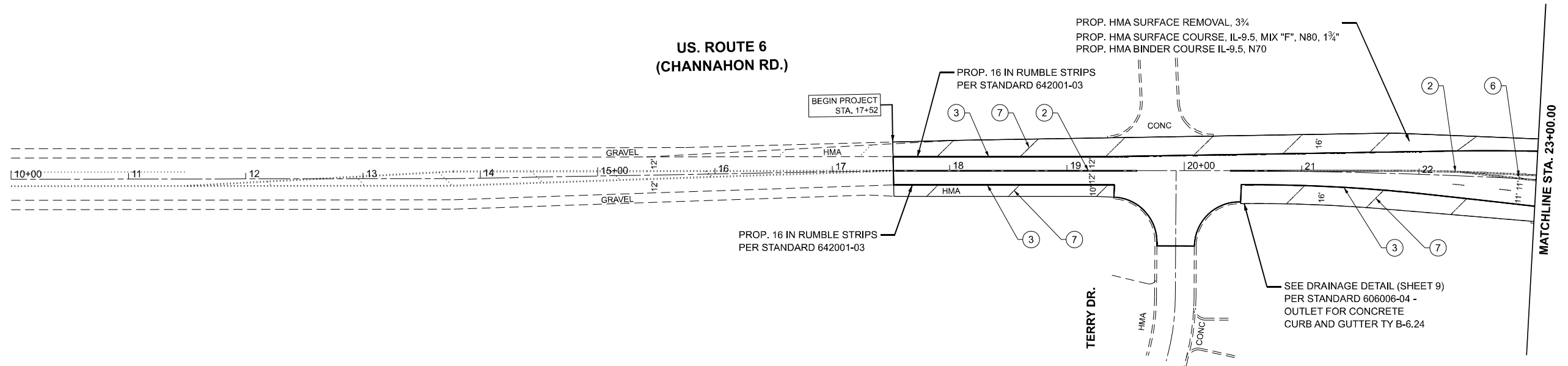
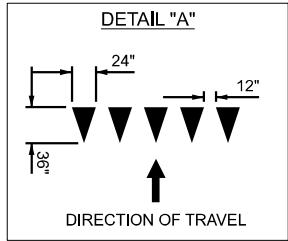
STATE OF ILLINOIS
DEPARTMENT OF TRANSPORTATION

TYPICAL SECTIONS
US 6 (CHANNAHON RD.) - TERRY AVE. TO IL-7 (LARKIN AVE.)

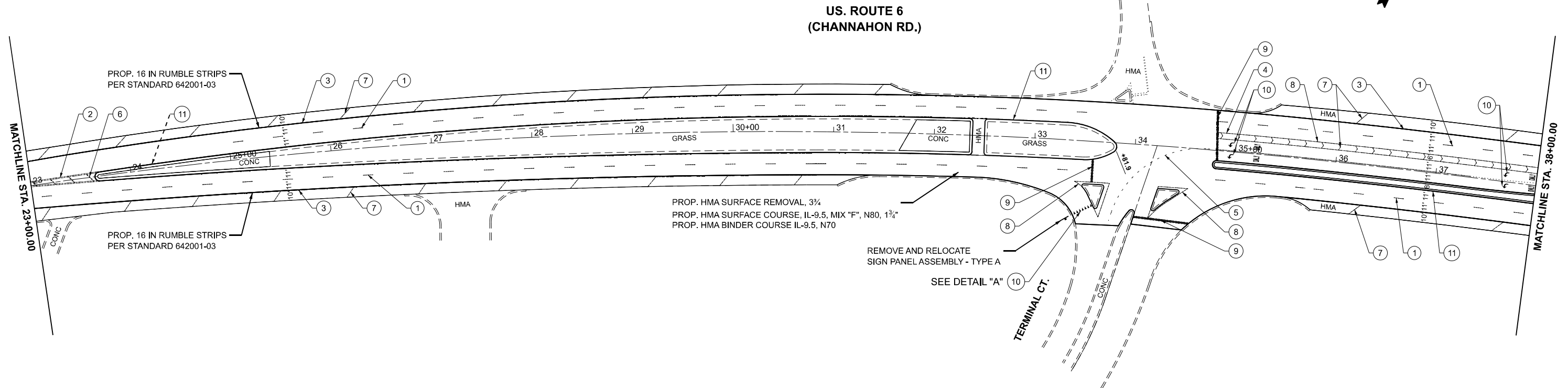
SCALE: SHEET 1 OF 1 SHEETS STA. TO STA.

F.A.P. RTE.	SECTION	COUNTY	TOTAL SHEETS	SHEET NO.
856	2025-1087-RS	WILL	24	5
CONTRACT NO. 80B14				
ILLINOIS FED. AID PROJECT				

USER NAME = justin.king	DESIGNED -	REVISED -
	DRAWN -	REVISED -
	CHECKED -	REVISED -
PLOT DATE = 7/29/2025	DATE -	REVISED -



- | | | |
|---|---|--|
| 1. PROP. THERMOPLASTIC PVMT. MARKING 4".
SKIP DASH, WHITE, 4". 10' DASH 30' SKIP | 5. PROP. THERMOPLASTIC PVMT. MARKING 6".
2' DASH, 6' SKIP WHITE | 9. PROP. THERMOPLASTIC PVMT. MARKING 24".
STOP BAR, WHITE |
| 2. PROP. THERMOPLASTIC PVMT. MARKING 4".
DOUBLE YELLOW @ 11" C-C | 6. PROP. THERMOPLASTIC PVMT. MARKING 12".
DIAGONAL, C-C @ 75' YELLOW | 10. PROP. THERMOPLASTIC PVMT MARKING.
LETTERS AND SYMBOLS, WHITE |
| 3. PROP. THERMOPLASTIC PVMT. MARKING 4".
SOLID WHITE | 7. PROP. THERMOPLASTIC PVMT. MARKING 12".
DIAGONAL WHITE | 11. PROP. THERMOPLASTIC PVMT MARKING 4".
MEDIAN EDGE LINE, SOLID YELLOW |
| 4. PROP. THERMOPLASTIC PVMT. MARKING 6".
SOLID WHITE | 8. PROP. THERMOPLASTIC PVMT. MARKING 8".
SOLID EDGE LINE, WHITE | |



MODEL: Rdwy Plan 1 - Rdwy Plan 1 [Sheet]
FILE NAME: c:\pawork\pawork\illinois.gov\justin.king\1122512\116725-shh-plan.dgn

USER NAME = justin.king	DESIGNED -	REVISED -
	DRAWN -	REVISED -
	CHECKED -	REVISED -
PLOT DATE = 8/13/2025	DATE -	REVISED -

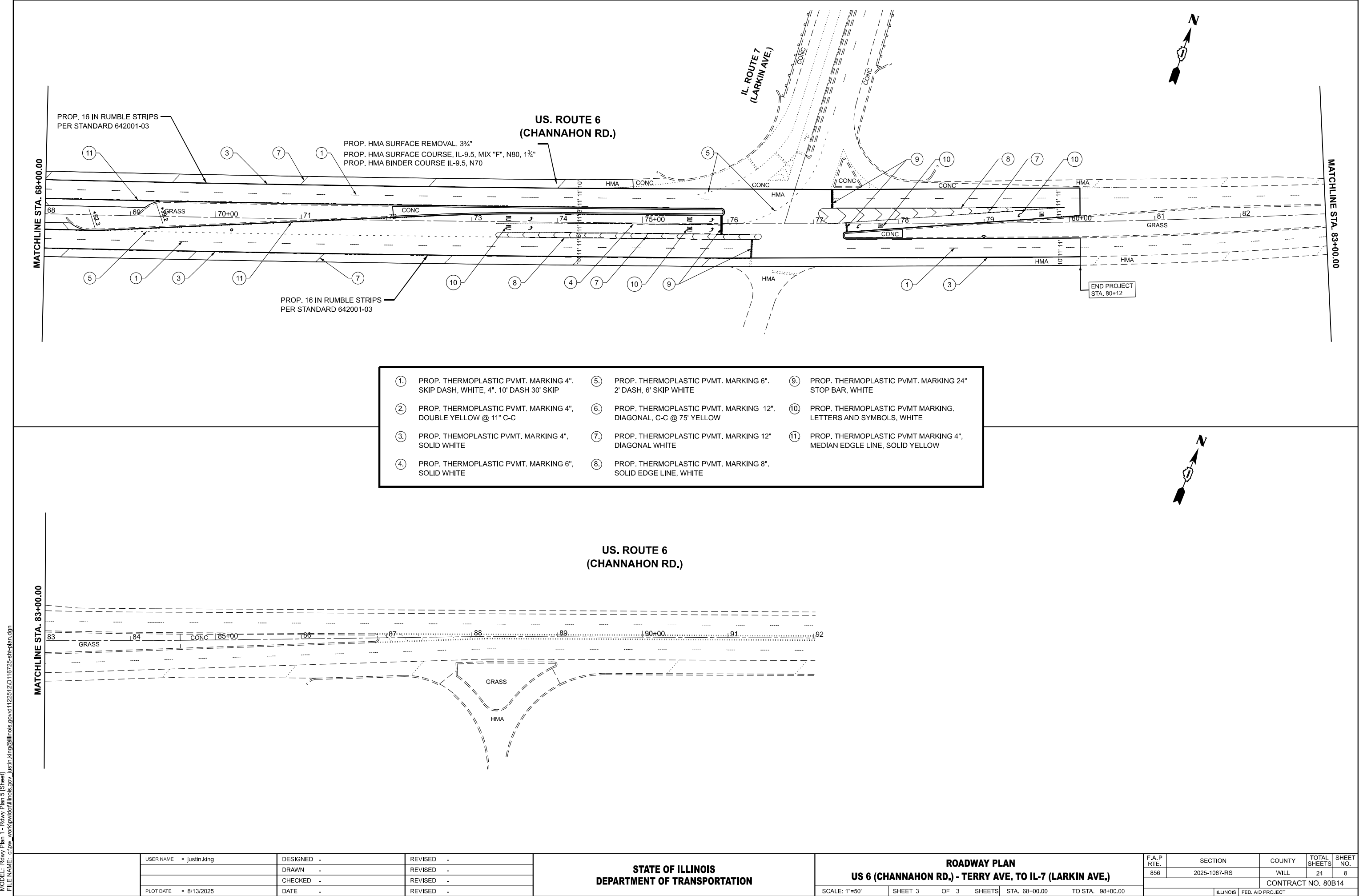
**STATE OF ILLINOIS
DEPARTMENT OF TRANSPORTATION**

**ROADWAY PLAN
US 6 (CHANNAHON RD.) - TERRY AVE. TO IL-7 (LARKIN AVE.)**

SCALE: 1"=50' SHEET 1 OF 3 SHEETS STA. 8+00.00 TO STA. 38+00.00

F.A.P RTE.	SECTION	COUNTY	TOTAL SHEETS	SHEET NO.
856	2025-1087-RS	WILL	24	6
CONTRACT NO. 80B14				
ILLINOIS FED. AID PROJECT				

MODEL: Rdwy Plan 1 - Rdwy Plan 5 [Sheet]
FILE NAME: c:\paw_work\paw\illinois.gov\112512\116725-shh-plan.dgn



	USER NAME = justin.king	DESIGNED -	REVISED -
		DRAWN -	REVISED -
		CHECKED -	REVISED -
	PLOT DATE = 8/13/2025	DATE -	REVISED -

STATE OF ILLINOIS
DEPARTMENT OF TRANSPORTATION

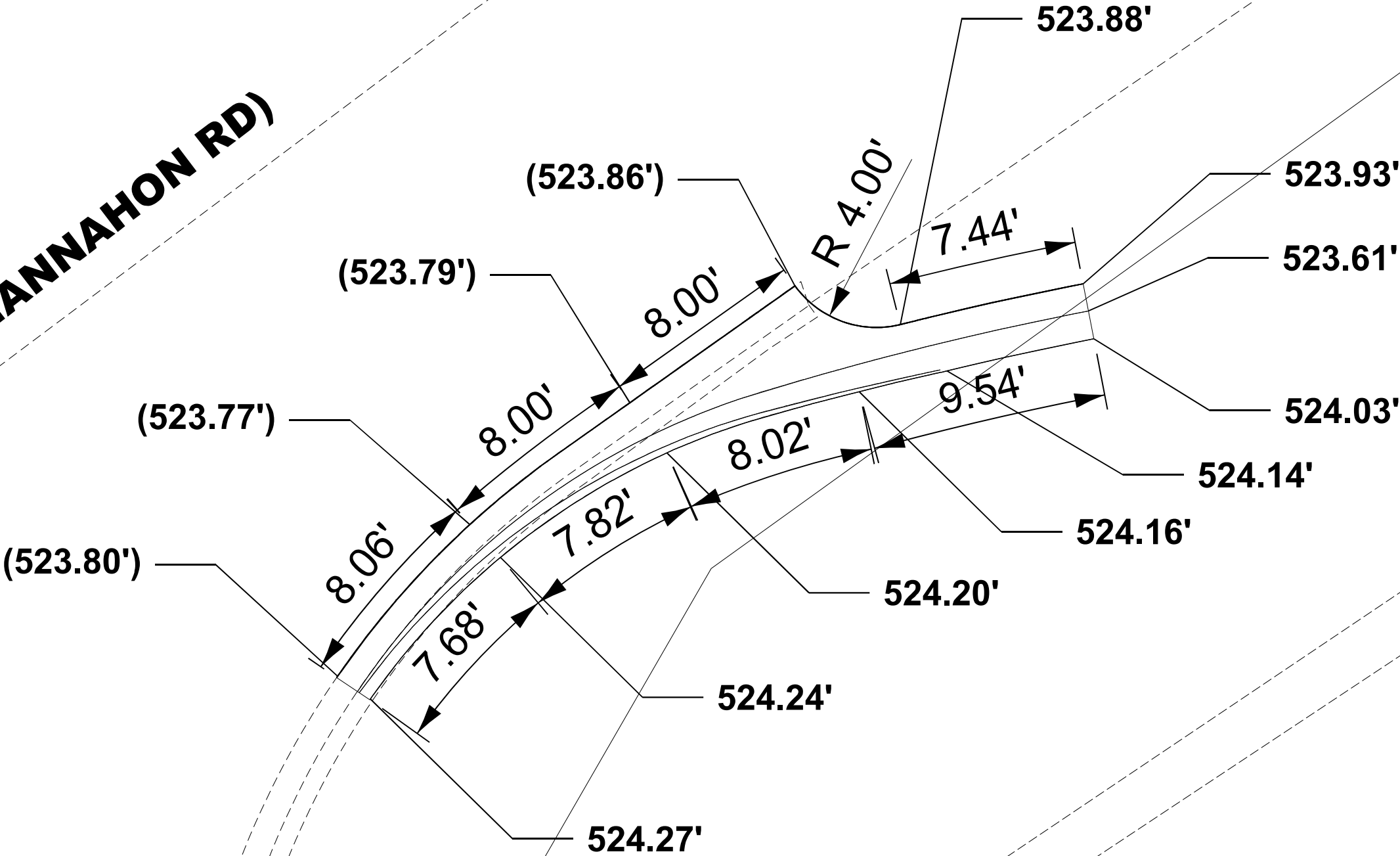
ROADWAY PLAN
US 6 (CHANNAHON RD.) - TERRY AVE. TO IL-7 (LARKIN AVE.)

SCALE: 1"=50' SHEET 3 OF 3 SHEETS STA. 68+00.00 TO STA. 98+00.00

F.A.P RTE.	SECTION	COUNTY	TOTAL SHEETS	SHEET NO.
856	2025-1087-RS	WILL	24	8
CONTRACT NO. 80B14				
ILLINOIS FED. AID PROJECT				

US 6 (CHANNAHON RD)

TERRY DRIVE



CODE	ITEM	QUANTITY	UNIT
21101615	TOPSOIL FURNISH AND PLACE, 4"	1.1	CU YD
44200050	WELDED WIRE REINFORCEMENT	3.0	SQ YD
44213204	TIE BARS 3/4"	12	EACH
60600095	CALSS SI CONCRETE (OUTLET)	2.0	CU YD

MODEL: Curb Return Detail [Sheet]
FILE NAME: c:\p\work\wtd\illinois.gov\justin.king@illinois.gov\1122545\ID116725-Design2.dgn

USER NAME = justin.king	DESIGNED -	REVISED -
	DRAWN -	REVISED -
	CHECKED -	REVISED -
PLOT DATE = 9/19/2025	DATE -	REVISED -

STATE OF ILLINOIS
DEPARTMENT OF TRANSPORTATION

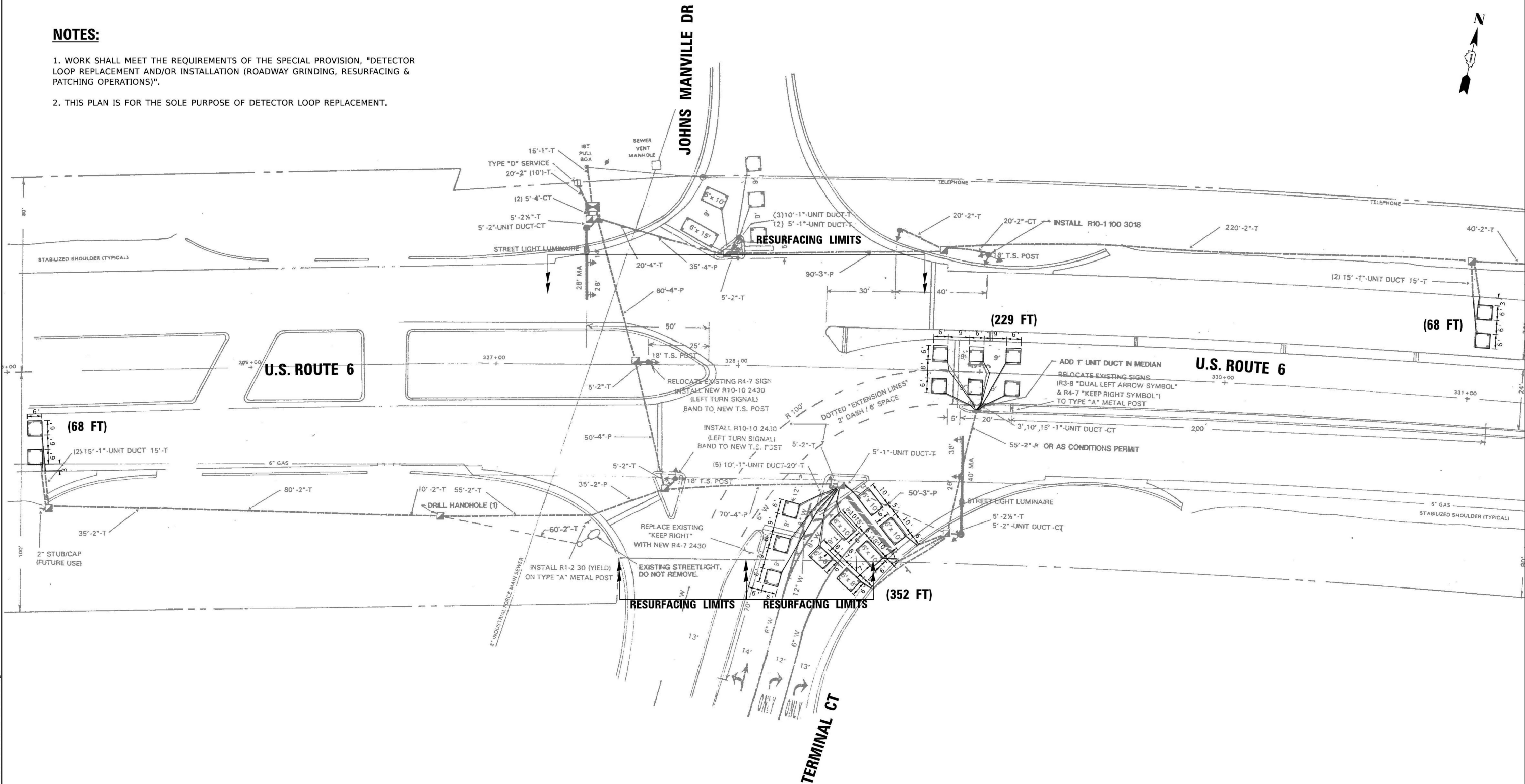
CURB RETURN DETAIL
SEQ OF US 6 AND TERRY DRIVE

SCALE: SHEET OF SHEETS STA. TO STA.

F.A.P RTE.	SECTION	COUNTY	TOTAL SHEETS	SHEET NO.
856	2025-1087-RS	WILL	24	9
CONTRACT NO. 80B14				
ILLINOIS FED. AID PROJECT				

NOTES:

1. WORK SHALL MEET THE REQUIREMENTS OF THE SPECIAL PROVISION, "DETECTOR LOOP REPLACEMENT AND/OR INSTALLATION (ROADWAY GRINDING, RESURFACING & PATCHING OPERATIONS)".
2. THIS PLAN IS FOR THE SOLE PURPOSE OF DETECTOR LOOP REPLACEMENT.



REPLACE ALL DETECTOR LOOPS AS SHOWN
(WITHIN THE RESURFACING LIMITS)

CODE	ITEM	QUANTITY	UNIT
X8860105	DETECTOR LOOP REPLACEMENT	717	FOOT

TS 21880

USER NAME = Justin.King	DESIGNED -	REVISED -
	DRAWN -	REVISED -
	CHECKED -	REVISED -
PLOT DATE = 8/11/2025	DATE -	REVISED -

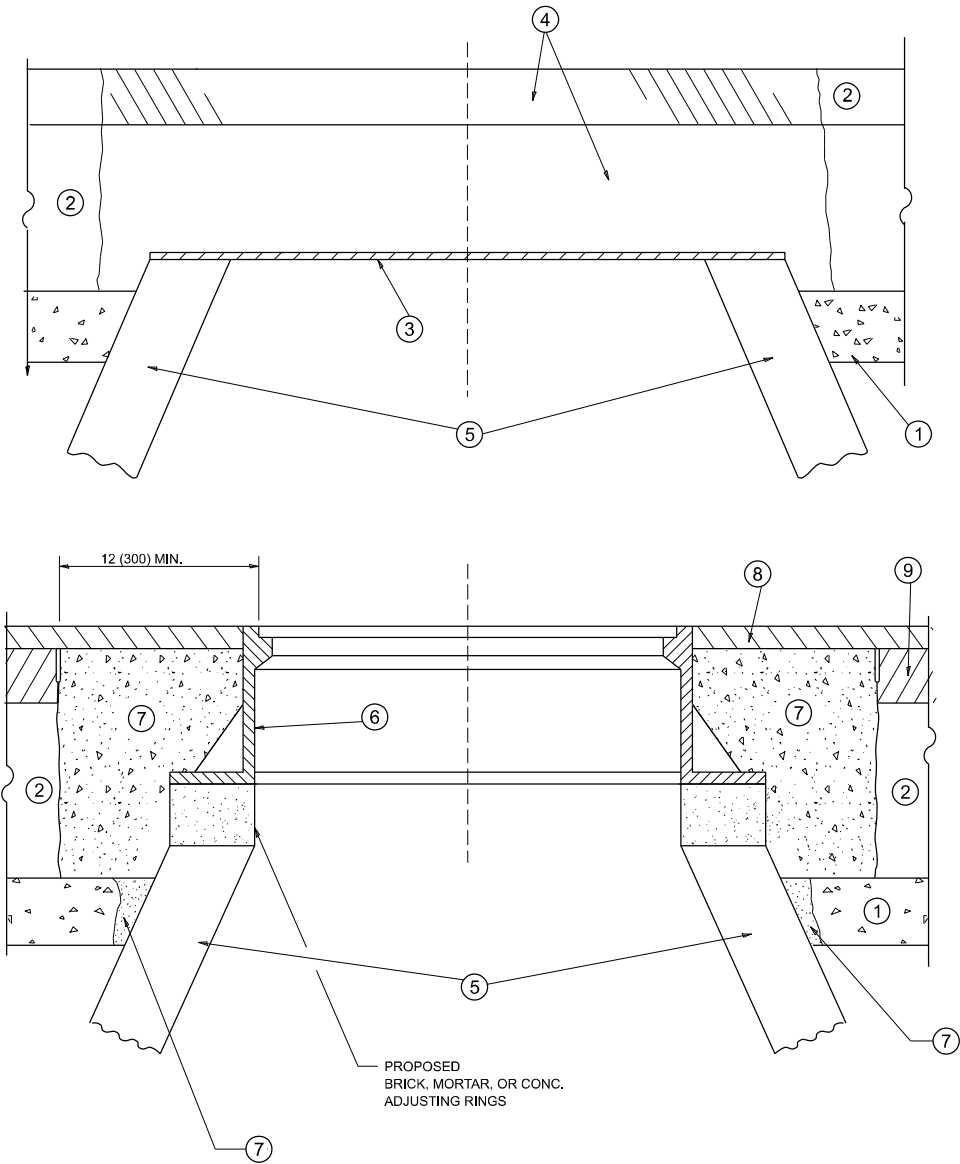
STATE OF ILLINOIS
DEPARTMENT OF TRANSPORTATION

DETECTOR LOOP PLAN
US 6 (CHANNAHON RD.) - TERRY AVE. TO IL-7 (LARKIN AVE.)

SCALE: SHEET 1 OF 3 SHEETS STA. TO STA.

F.A.P. RTE.	SECTION	COUNTY	TOTAL SHEETS	SHEET NO.
856	2025-1087-RS	WILL	24	9
CONTRACT NO. 80B14				
ILLINOIS FED. AID PROJECT				

MODEL: Detector Loop-1 (Sheet)
FILE NAME: c:\p\work\paw\illinois.gov\Justin.King\1122512\116725-shi-exhibits.dgn



DETAILS FOR FRAMES AND LIDS ADJUSTMENT
WITH MILLING

NOTES

- EXISTING BROKEN FRAMES AND LIDS SHALL BE REMOVED AND DISPOSED OF BY THE CONTRACTOR AND SHALL BE REPLACED AS DIRECTED BY THE ENGINEER. REPLACEMENT FRAMES AND LIDS WILL BE PAID FOR IN ACCORDANCE WITH ARTICLE 109.04 OF THE STANDARD SPECIFICATIONS UNLESS A SEPARATE PAY ITEM HAS BEEN PROVIDED.
- IF THE EXISTING LIDS ARE OPEN, THE FRAME WILL BE ADJUSTED TO THE ELEVATION OF THE MILLED PAVEMENT SURFACE PRIOR TO THE MILLING OPERATION. THE FRAME WILL NOT BE REMOVED AND COVERED BY THE METAL PLATE.
- CITY OF CHICAGO CASTINGS ARE THE PROPERTY OF THE CITY AND THE CONTRACTOR SHALL NOTIFY THE CITY FOR REMOVAL AND DISPOSITION OF THE CASTINGS.
- THE METAL PLATE USED TO COVER THE STRUCTURE SHALL REMAIN THE PROPERTY OF THE CONTRACTOR.
- THE CONTRACTOR SHALL REMOVE ALL TRAFFIC CONTROL DEVICES BY THE END OF EACH WORK SHIFT.

CONSTRUCTION PROCEDURES

- STAGE 1** (BEFORE PAVEMENT MILLING)
- REMOVE A MINIMUM OF 12 (300) OF THE PAVEMENT FROM AROUND THE STRUCTURE.
 - REMOVE THE EXISTING FRAME AND LID FROM THE STRUCTURE.
 - COVER THE STRUCTURE OPENING WITH A 36 (900) DIAMETER METAL PLATE.
 - BACKFILL WITH CRUSHED STONE AND HMA SURFACE MIX APPROVED BY THE ENGINEER. (MIN. 3 (80) HMA TO REMAIN AFTER MILLING).

- STAGE 2** (AFTER PAVEMENT MILLING)
- REMOVE THE HMA SURFACE MIX AND CRUSHED STONE.
 - INSTALL THE FRAME AND LID; ADJUST THE FRAME TO ITS FINAL SURFACE ELEVATION.
 - THE SURROUNDING SPACE SHALL BE FILLED WITH CLASS PP-2* CONCRETE TO THE ELEVATION OF THE SURFACE OF THE EXISTING BASE COURSE OR THE BINDER COURSE.

*UNLESS OTHERWISE SPECIFIED IN THE PLANS.

THE PROCEDURE EXPLAINED ABOVE SHALL CONFORM TO THE APPLICABLE PORTIONS OF SECTIONS 353, 406, 602, AND 603 OF THE STANDARD SPECIFICATIONS EXCEPT THAT "THE CONTRACTOR SHALL ADJUST THE STRUCTURES TO THE FINISHED PAVEMENT ELEVATION NO MORE THAN 5 CALENDAR DAYS PRIOR TO PLACEMENT OF THE FINAL LIFT OF SURFACE UNLESS APPROVED BY THE ENGINEER."

LEGEND

- | | |
|--|-------------------------------|
| ① SUB-BASE GRANULAR MATERIAL | ⑥ FRAME AND LID (SEE NOTES) |
| ② EXISTING PAVEMENT | ⑦ CLASS PP-2* CONCRETE |
| ③ 36 (900) DIAMETER METAL PLATE | ⑧ PROPOSED HMA SURFACE COURSE |
| ④ PROPOSED CRUSHED STONE AND HMA SURFACE MIX | ⑨ PROPOSED HMA BINDER COURSE |
| ⑤ EXISTING STRUCTURE | |

LOCATION OF STRUCTURES

THE CONTRACTOR WILL BE REQUIRED TO KEEP A RECORD OF THE LOCATIONS OF THE BURIED STRUCTURES ACCORDING TO THE STATION AND DISTANCE LEFT OR RIGHT OF THE CENTERLINE OF PAVEMENT. UPON COMPLETION OF THE WORK, THE CONTRACTOR WILL DELIVER THE RECORD TO THE ENGINEER.

BASIS OF PAYMENT

- REMOVING FRAMES AND LIDS ON DRAINAGE AND UTILITY STRUCTURES IN THE PAVEMENT PRIOR TO MILLING, AND ADJUSTING TO FINAL GRADE PRIOR TO PLACING THE SURFACE COURSE, WILL BE PAID FOR AT THE CONTRACT UNIT PRICE EACH FOR "FRAMES AND LIDS TO BE ADJUSTED (SPECIAL)."
- THIS WORK WILL NOT BE PAID FOR WHEN DRAINAGE AND UTILITY STRUCTURES ARE SPECIFIED FOR PAYMENT AS STRUCTURE RECONSTRUCTION.
- NEW FRAMES AND LIDS, WHEN SPECIFIED, WILL BE PAID FOR SEPARATELY.
- WHEN STRUCTURES ARE TO BE ADJUSTED OR RECONSTRUCTED, THE LOWERING AND RAISING OF THE FRAMES AND LIDS WILL NOT BE PAID FOR SEPARATELY BUT WILL BE INCLUDED IN THE COST OF THE CORRESPONDING PAY ITEM.

ALL DIMENSIONS ARE IN INCHES (MILLIMETERS) UNLESS OTHERWISE SHOWN

STATE OF ILLINOIS
DEPARTMENT OF TRANSPORTATION

DETAILS FOR
FRAMES AND LIDS ADJUSTMENT WITH MILLING

SCALE: NONE SHEET 1 OF 1 SHEETS STA. TO STA.

F.A.P RTE.	SECTION	COUNTY	TOTAL SHEETS	SHEET NO.
856	2025-1087-RS	WILL	24	13
BD600-03 (BD-08)		CONTRACT NO. 80B14		
ILLINOIS		FED. AID PROJECT		

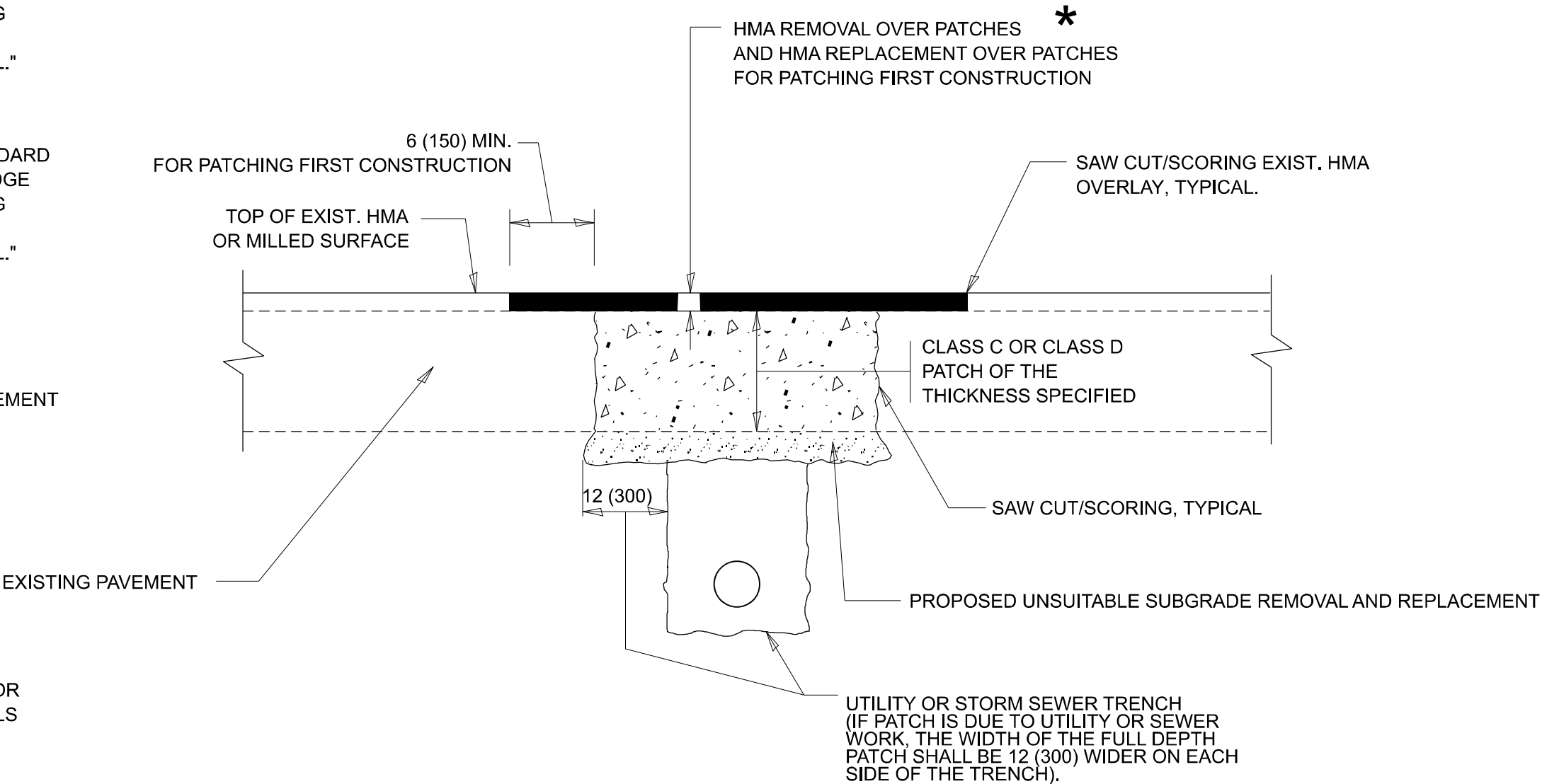
MODEL: BD-08 (Sheet)
FILE NAME: c:\pav_work\pav\illinois.gov_justin.king@illinois.gov\1122512\116725-shh-DistStd.dgn

METHOD OF MEASUREMENT

REFER TO SECTION 442 OF THE STANDARD SPECIFICATIONS FOR ROAD AND BRIDGE CONSTRUCTION AND THE RECURRING SPECIAL PROVISION "PATCHING WITH HOT-MIX ASPHALT OVERLAY REMOVAL."

BASIS OF PAYMENT

- 1. REFER TO SECTION 442 OF THE STANDARD SPECIFICATIONS FOR ROAD AND BRIDGE CONSTRUCTION AND THE RECURRING SPECIAL PROVISION "PATCHING WITH HOT-MIX ASPHALT OVERLAY REMOVAL."
- 2. SAW CUT/SCORING OF EXISTING HMA OVERLAY IS INCLUDED IN THE COST OF PAVEMENT PATCHING.
- 3. SAW CUT/SCORING OF EXISTING PAVEMENT IS INCLUDED IN THE COST OF PAVEMENT PATCHING.



* SEE TYPICAL SECTIONS FOR THICKNESS AND MATERIALS

SEQUENCE OF CONSTRUCTION (PATCHING FIRST)

- 1. REMOVE THE EXISTING HMA MATERIAL OVER THE AREA TO BE PATCHED.
- 2. REMOVE AND REPLACE WITH CLASS C OR D PATCH.
- 3. REPLACE HMA MATERIAL OVER THE AREA TO BE PATCHED.

SEQUENCE OF CONSTRUCTION (MILLING FIRST)

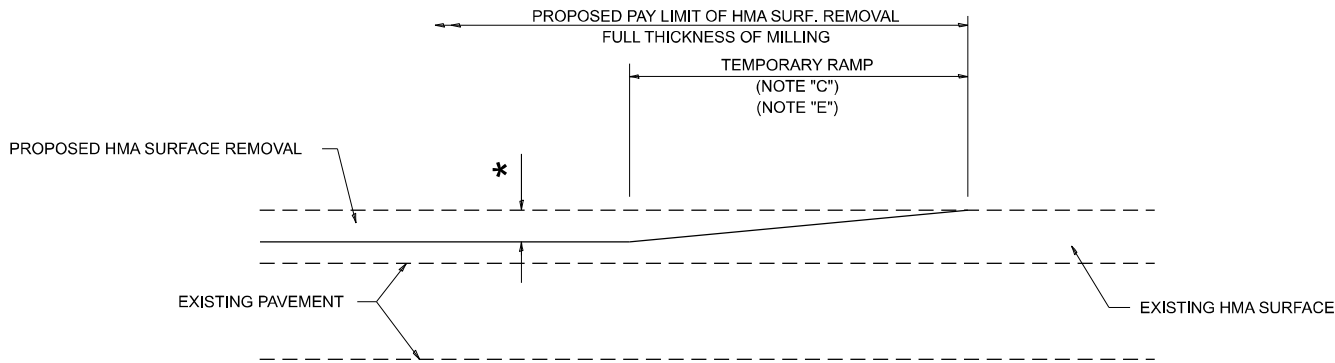
- 1. MILL HMA FIRST IF THERE IS AT LEAST 4 ½ INCHES OR MORE OF HMA MATERIAL ON TOP OF THE EXISTING PAVEMENT OR IF THE PAVEMENT IS FULL DEPTH HMA. A MINIMUM OF 2 INCHES OF HMA MATERIAL SHALL BE IN PLACE AFTER MILLING.
- 2. REMOVE AND REPLACE WITH FULL DEPTH CLASS D PATCHES TO TOP OF MILLED SURFACE.

ALL DIMENSIONS ARE IN INCHES (MILLIMETERS) UNLESS OTHERWISE SHOWN.

MODEL: BD-22 (Sheet)
FILE NAME: c:\pav_work\pav\illinois.gov\112512\116725-shh-DistStd.dgn

	USER NAME = justin.king	DESIGNED - R. SHAH	REVISED - R. BORO 01-01-07	STATE OF ILLINOIS DEPARTMENT OF TRANSPORTATION	PAVEMENT PATCHING FOR HMA SURFACED PAVEMENT				F.A.P RTE.	SECTION	COUNTY	TOTAL SHEETS	SHEET NO.
		DRAWN -	REVISED - R. BORO 09-04-07						856	2025-1087-RS	WILL	24	14
		CHECKED -	REVISED - K. ENG 10-27-08						BD400-04 (BD-22) CONTRACT NO. 80B14				
	PLOT DATE = 8/13/2025	DATE - 10-25-94	REVISED - K. SMITH 11-18-22		ILLINOIS FED. AID PROJECT								
					SCALE: NONE	SHEET 1	OF 1	SHEETS	STA.	TO STA.			

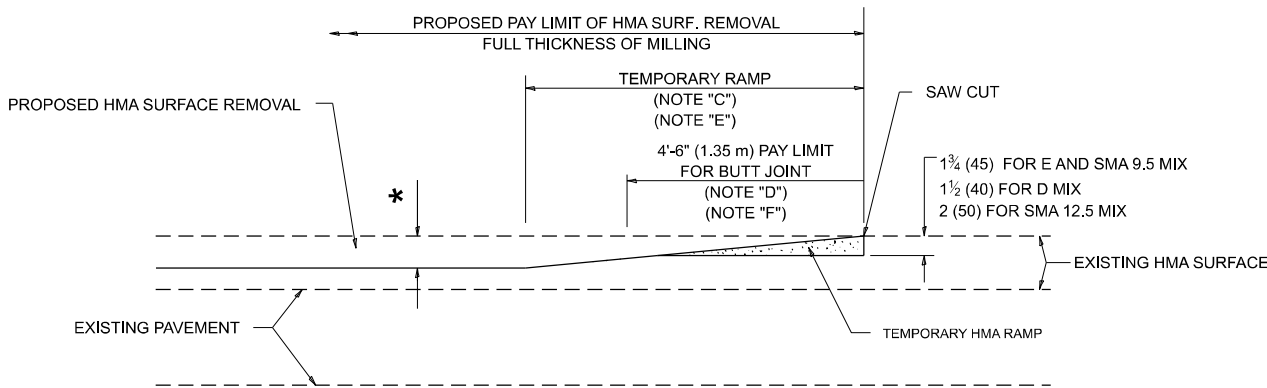
MODEL: BD-32 [Sheet]
FILE NAME: c:\pav_work\pav\illinois.gov\1122512\116725-shh-DJasStd.dgn



MILLED TEMPORARY RAMP

(FOR BUTT JOINT AND HMA TAPER SEE DETAIL BELOW)

OPTION 1

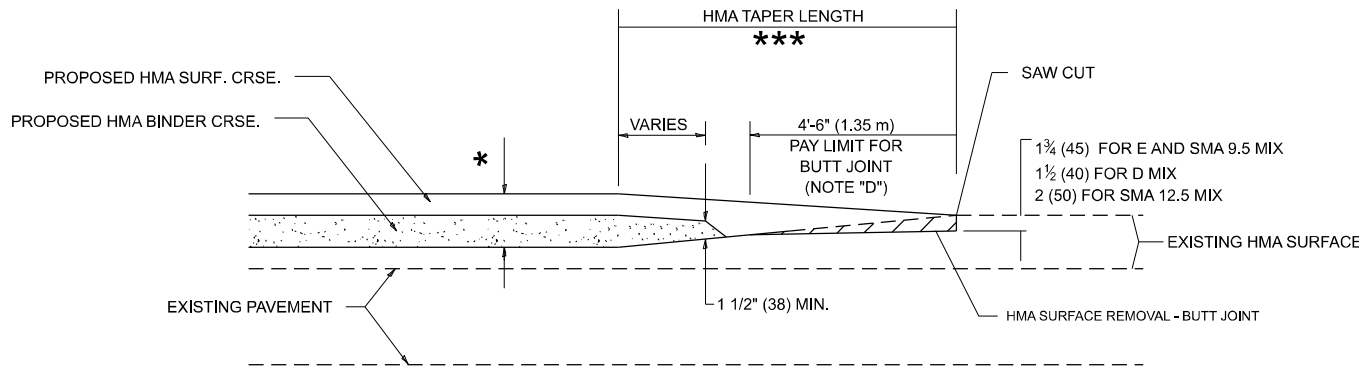


HMA CONSTRUCTED TEMPORARY RAMP

(FOR BUTT JOINT AND HMA TAPER SEE DETAIL BELOW)

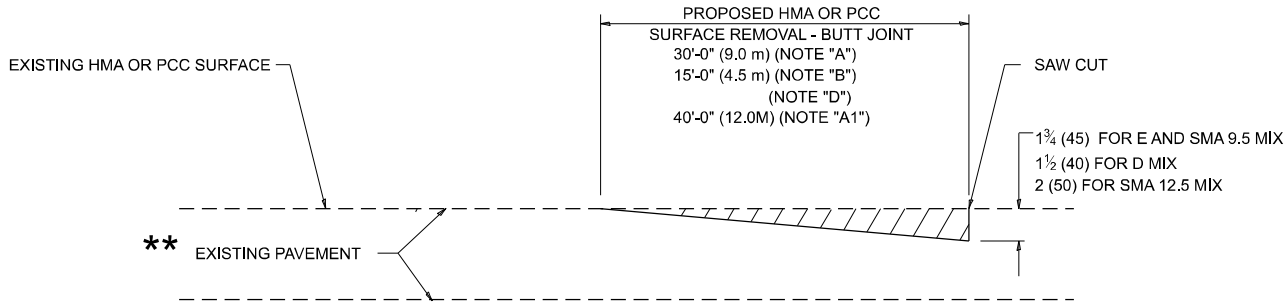
OPTION 2

TYPICAL TEMPORARY RAMP

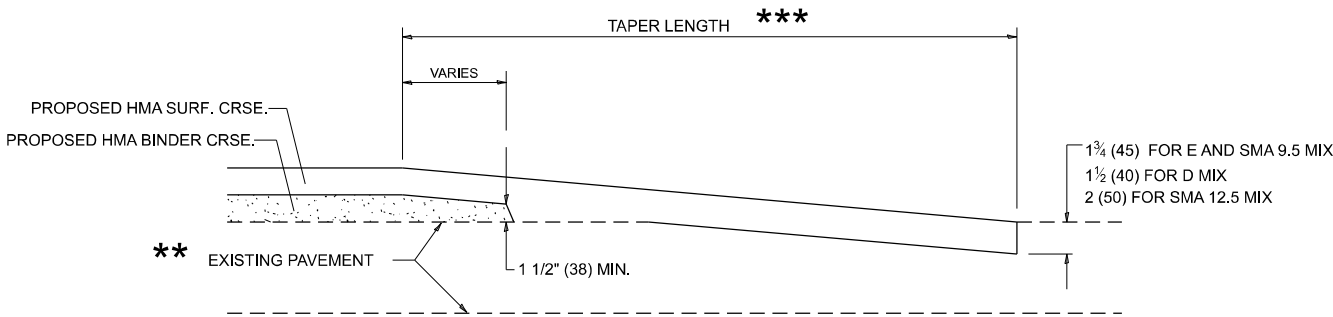


BUTT JOINT AND HMA TAPER

TYPICAL BUTT JOINT AND HMA TAPER FOR MILLING AND RESURFACING



BUTT JOINT DETAIL



HMA TAPER DETAIL

TYPICAL BUTT JOINT AND HMA TAPER FOR RESURFACING ONLY

**

PC CONCRETE, HMA OR HMA RESURFACED PAVEMENT.

GENERAL NOTES

- MAINLINE ARTERIAL ROADWAYS AND MAJOR SIDE ROADS.
- INTERSTATES.
- MINOR SIDE ROADS.
- THE TEMP. RAMP SHALL BE CONSTRUCTED IMMEDIATELY UPON REMOVAL OF THE EXISTING HMA SURFACE.
- THE BUTT JOINT SHALL BE CONSTRUCTED IMMEDIATELY PRIOR TO PLACING THE PROPOSED HMA COURSES.
- TAPER THE TEMP. RAMP AT A RATE OF 3' - 4" (1.02m) PER 1 INCH (25 mm) OF MILLING THICKNESS.
* SEE TYPICAL SECTIONS FOR MILLING THICKNESS.
- SEE ARTICLE 406.08 AND 406.14 OF THE STANDARD SPECIFICATIONS FOR "HMA AND/OR PCC SURFACE REMOVAL, BUTT JOINT".

20'-0" (6.1 m) PER 1 (25) RESURFACING (NOTE "A")
10'-0" (3.0 m) PER 1 (25) RESURFACING (NOTE "B")

BASIS OF PAYMENT

- THE BUTT JOINT WILL BE PAID FOR AT THE CONTRACT UNIT PRICE PER SQUARE YARD (SQUARE METER) FOR "HOT-MIX ASPHALT SURFACE REMOVAL - BUTT JOINT" OR FOR "PORTLAND CEMENT CONCRETE SURFACE REMOVAL- BUTT JOINT".
- THE TEMPORARY RAMP AND SAW CUT SHALL BE INCLUDED IN THE UNIT COST FOR HMA OR PCC SURFACE REMOVAL-BUTT JOINT.

ALL DIMENSIONS ARE IN INCHES (MILLIMETERS) UNLESS OTHERWISE SHOWN.

USER NAME = justin.king	DESIGNED - M. DE YONG	REVISED - A. ABBAS 03-21-97
	DRAWN -	REVISED - M. GOMEZ 04-06-01
	CHECKED -	REVISED - R. BORO 01-01-07
PLOT DATE = 8/13/2025	DATE - 06-13-90	REVISED - K. SMITH 11-18-22

STATE OF ILLINOIS
DEPARTMENT OF TRANSPORTATION

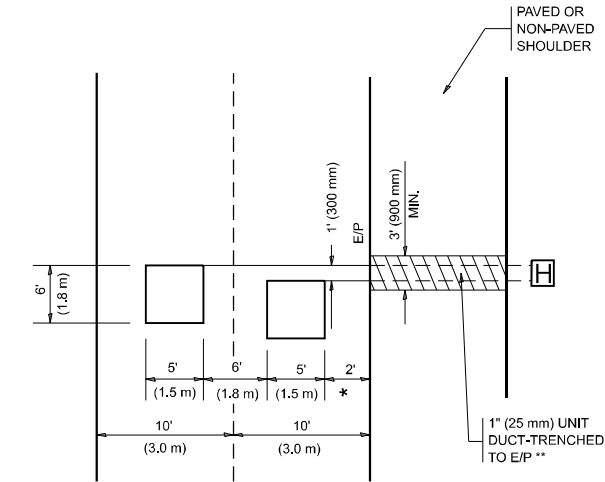
BUTT JOINT AND HMA TAPER DETAILS

SCALE: NONE SHEET 1 OF 1 SHEETS STA. TO STA.

F.A.P RTE.	SECTION	COUNTY	TOTAL SHEETS	SHEET NO.
856	2025-1087-RS	WILL	24	16
BD400-05 BD-32		CONTRACT NO. 80B14		
ILLINOIS		FED. AID PROJECT		

LOOPS NEXT TO SHOULDERS

PROVIDE A PAVEMENT REPLACEMENT
NOTE WHICH SHOULD EQUAL
3' (900 mm) X WIDTH OF
PAVED SHOULDER.



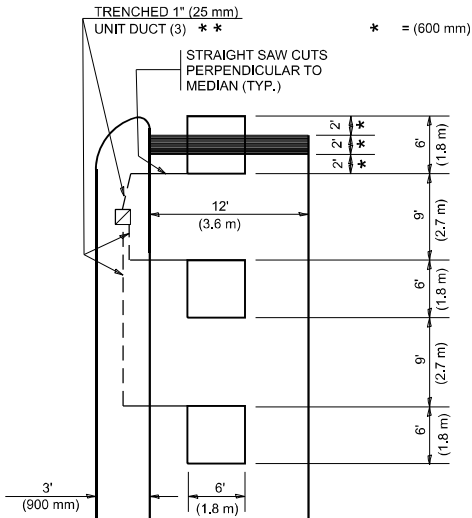
* = (600 mm)

** UNIT DUCT IS TO BE SHOWN ON PLAN SHEETS
BUT SHALL NOT BE INCLUDED IN THE PAY ITEMS.

LEFT TURN LANES WITH MEDIANS

VOLUME DENSITY ("FAR OUT" DETECTION)
ON SAME APPROACH
(PROTECTED / PERMITTED LEFT TURN PHASING)

HANDHOLE LOCATION MAY
VARY DEPENDING ON GEOMETRICS
AND DESIGN OF TRAFFIC SIGNALS.
HEAVY-DUTY HANDHOLES TO BE
USED WHEN THE MEDIAN IS
MOUNTABLE. REFER TO STANDARD
814001 TO ENSURE THAT HANDHOLE
FITS IN MEDIAN.

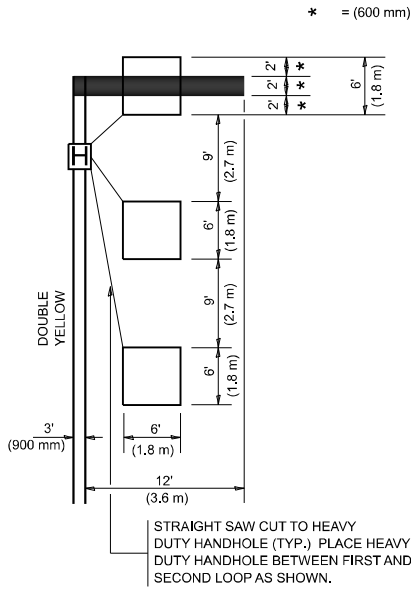


** UNIT DUCT IS TO BE SHOWN ON PLAN SHEETS
BUT SHALL NOT BE INCLUDED IN THE PAY ITEMS.

NOTE: DUAL LEFT TURNS NOT SHOWN REFER TO
PLAN SHEET FOR DETECTOR LOOP REPLACEMENT

LEFT TURN LANES WITHOUT MEDIANS

VOLUME DENSITY ("FAR OUT" DETECTION)
ON SAME APPROACH
(PROTECTED / PERMITTED LEFT TURN PHASING)



NOTE: DUAL LEFT TURNS NOT SHOWN REFER TO
PLAN SHEET FOR DETECTOR LOOP REPLACEMENT

NOTES:

VEHICLES LOOP DETECTORS

- * ALL LEAD IN CABLE SHALL BE TWO CONDUCTOR NO. 14 TWISTED, SHIELDED.
- * EACH DETECTOR LOOP SHALL HAVE ITS OWN SAW CUT FROM THE LOOP TO THE EDGE OF PAVEMENT OR TO A HANDHOLE IN THE PAVEMENT.
- * EACH DETECTOR LOOP SHALL HAVE ITS OWN ONE INCH (25 mm) UNIT DUCT BETWEEN THE EDGE OF PAVEMENT AND THE FIRST HANDHOLE OR JUNCTION BOX. EACH UNIT DUCT RUN SHALL BE SHOWN ON THE PLANS BY THE DESIGNER, BUT SHALL NOT BE PAID FOR SEPARATLY. THIS ITEM IS INCIDENTAL TO THE PAY ITEM FOR DETECTOR LOOPS.
- * ONE DIMENSION OF ALL DETECTOR LOOPS SHALL BE SIX FEET (1.8 m)
- * EACH LANE OF NON-LOCKING, PRESENCE DETECTION AND EACH LANE OF A DOUBLE LEFT TURN LANE REQUIRES A SEPARATE INDUCTIVE LOOP DETECTOR AND LEAD IN CABLE.
- * WHEN NON-LOCKING, PRESENCE DETECTION IS USED, MORE THAN ONE LOOP PER LANE IS REQUIRED BEHIND THE STOP BAR (i.e. 1-1/2, 1-3/4, 2).
- * WHEN SYSTEM LOOPS ARE REQUIRED ON AN APPROACH OF AN INTERSECTION, THE LOOPS USED FOR VOLUME DENSITY AND INTERSECTION TIMING SHALL ALSO BE USED AS SYSTEM DETECTORS. EACH ONE OF THESE TYPE OF LOOPS REQUIRES A SEPARATE TWO CONDUCTOR NO. 14 TWISTED SHIELDED CABLE AND A SEPARATE INDUCTIVE LOOP DETECTOR WHEN NEW CONTROLLERS ARE UTILIZED. THE DESIGNER SHALL LABEL THESE TYPES OF LOOPS AS "INTERSECTION AND SAMPLING (SYSTEM) DETECTORS" ON THE SIGNAL LAYOUT, THE INTERCONNECT PLAN AND THE SYSTEM CABLE PLAN. WHEN AN EXISTING CONTROLLER IS UTILIZED FOR THIS TYPE OF DETECTION, THE PAY ITEM "INDUCTIVE LOOP DETECTOR WITH SYSTEM OUTPUT" SHOULD BE USED.

PLACEMENT OF DETECTORS

THE FOLLOWING FIGURES REPRESENT THE MOST COMMON DETECTOR LOOP LOCATIONS AND SIZES. ADJUSTMENTS WILL BE NECESSARY FOR SPECIFIC GEOMETRIC CONSIDERATIONS.

LOCATIONS AND DEMENSIONS OF DETECTOR LOOPS ARE REQUIRED ON ALL SIGNAL LAYOUT PLAN SHEETS.

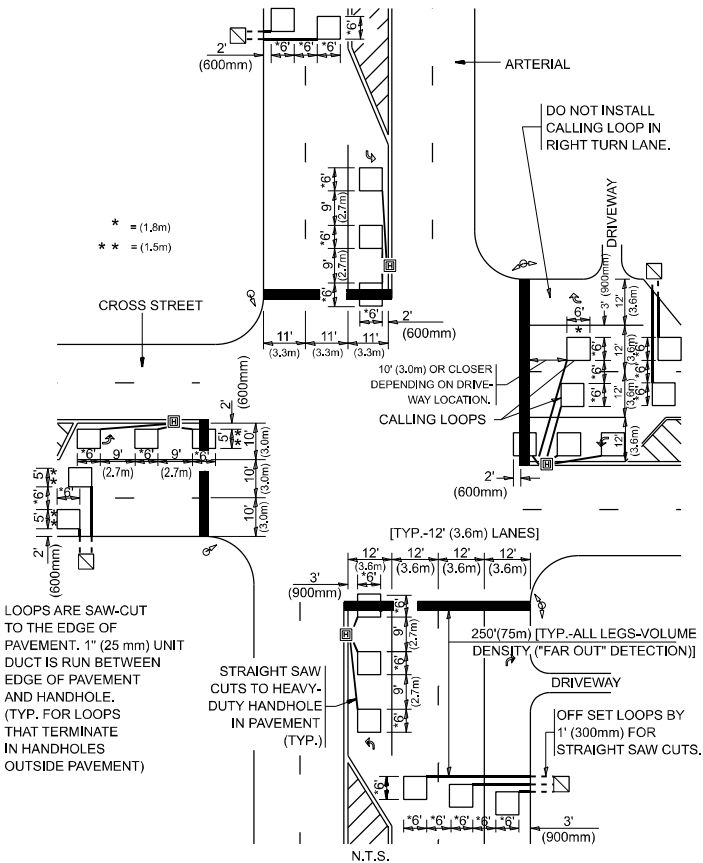
"FAR OUT" DETECTION REFERS TO LOCKING, PRESENCE TYPE DETECTION LOCATED IN THRU LANES, RIGHT TURN LANES, AND RIGHT TURN LANE TAPER AREAS (IF APPLICABLE), USUALLY 250' (75 m) IN ADVANCE OF STOP BARS. "UPTIGHT" DETECTION REFERS TO NON-LOCKING PRESENCE TYPE DETECTION LOCATED IN ALL LANES AND 10'-15' (3.0 m-4.5 m) BEHIND THE CROSSING STREET'S EDGE OF PAVEMENT EXTENDED.

NOTE:

ALL DETAILS AND NOTES SHOWN ARE FROM THE I.D.O.T. DISTRICT 1 TRAFFIC SIGNAL DESIGN GUIDELINES DATED JANUARY 1995

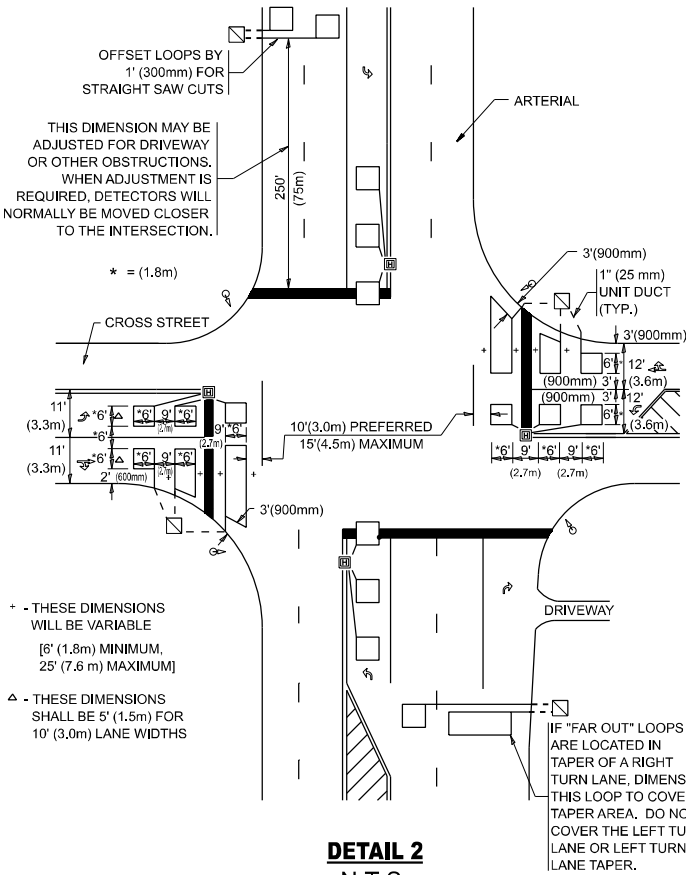
THIS DRAWING HAS BEEN PREPARED TO ASSIST THE RESIDENT ENGINEER FOR ALL ROADWAY RESURFACING OR S.M.A.R.T. PROJECTS WHERE THE DIMENSIONS ARE NOT SHOWN ON THE PLANS AND THE FINAL LOCATIONS FOR CROSSWALKS OR STOP BARS ARE NOT DETERMINED.

ARTERIAL-VOLUME DENSITY ("FAR OUT" DETECTION)
CROSS STREET-NON VOLUME DENSITY ("FAR OUT" DETECTION)



DETAIL 1
N.T.S.

ARTERIAL-VOLUME DENSITY ("FAR OUT" DETECTION)
CROSS STREET-NON VOLUME DENSITY ("UPTIGHT" PRESENCE DETECTION)



DETAIL 2
N.T.S.

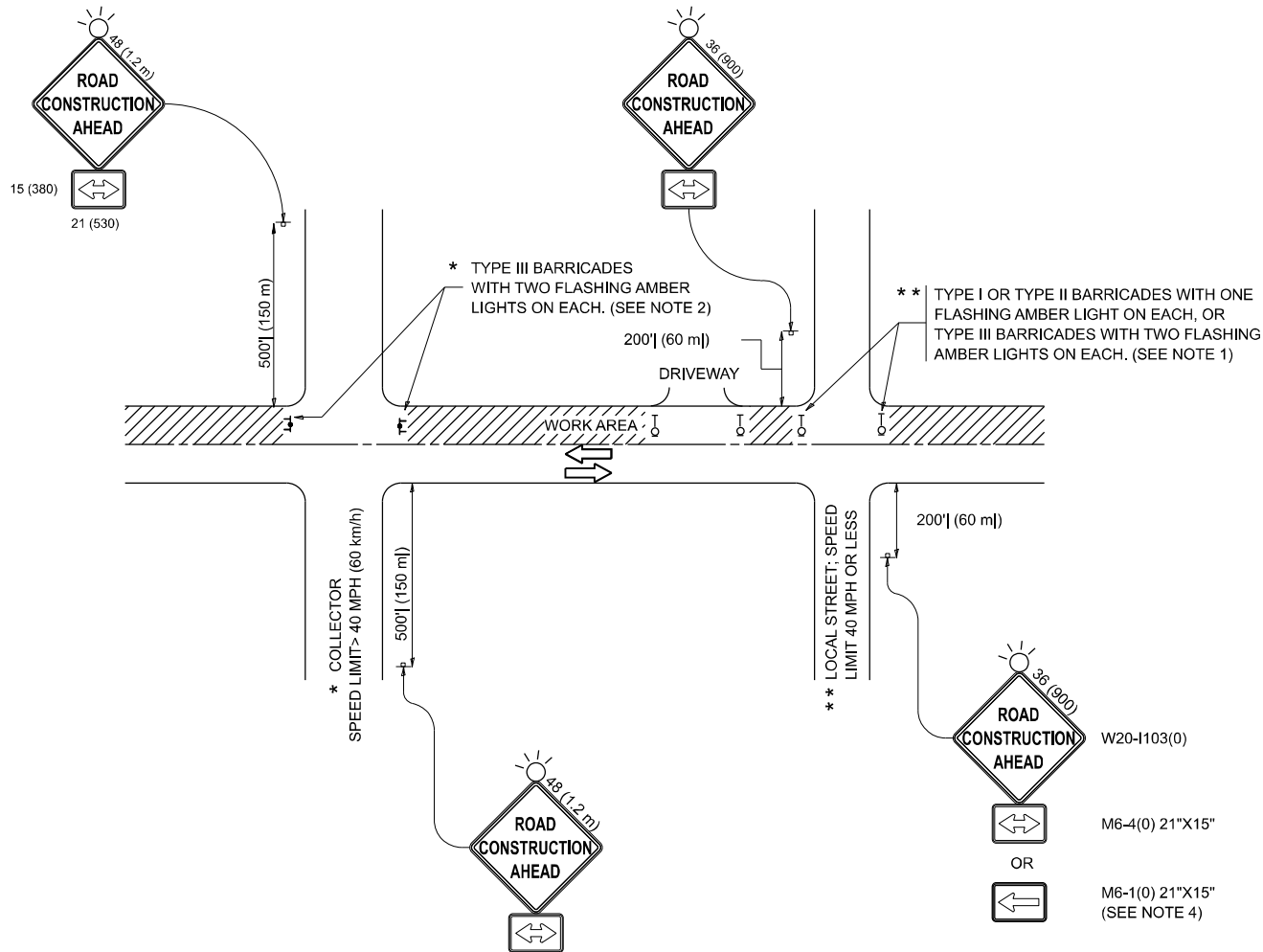
STATE OF ILLINOIS
DEPARTMENT OF TRANSPORTATION

DISTRICT 1 - DETECTOR LOOP INSTALLATION
DETAILS FOR ROADWAY RESURFACING

SCALE: NONE SHEET 1 OF 1 SHEETS STA. TO STA.

F.A.P RTE.	SECTION	COUNTY	TOTAL SHEETS	SHEET NO.
856	2025-1087-RS	WILL	24	17
TS-07		CONTRACT NO. 80B14		
ILLINOIS		FED. AID PROJECT		

MODEL: TC-10 (Sheet)
FILE NAME: c:\p\work\pwt\illinois.gov\justin.king@illinois.gov\d1122512\116725-shh-DtsStd.dgn



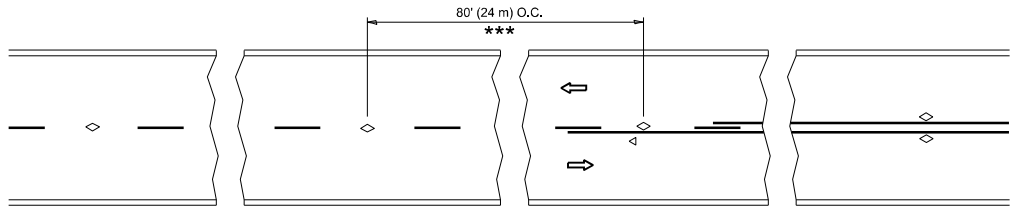
NOTES:

- SIDE ROAD WITH A SPEED LIMIT OF 40 MPH (60 km/h) OR LESS AS SHOWN ON THE DRAWING AND AS DIRECTED BY THE ENGINEER:
 - ONE "ROAD CONSTRUCTION AHEAD" SIGN 36 x 36 (900x900) WITH A FLASHER MOUNTED ON IT APPROXIMATELY 200' (60 m) IN ADVANCE OF THE MAIN ROUTE.
 - THE CLOSED PORTION OF THE MAIN ROUTE SHALL BE PROTECTED BY BLOCKING WITH TYPE I, TYPE II OR TYPE III BARRICADES, 1/3 OF THE CROSS SECTION OF THE CLOSED PORTION.
- SIDE ROAD WITH A SPEED LIMIT GREATER THAN 40 MPH (60 km/h) AS SHOWN ON THE DRAWING AND AS DIRECTED BY THE ENGINEER:
 - ONE "ROAD CONSTRUCTION AHEAD" SIGN 48 x 48 (1.2 m x 1.2 m) WITH A FLASHER MOUNTED ON IT APPROXIMATELY 500' (150 m) IN ADVANCE OF THE MAIN ROUTE.
 - THE CLOSED PORTION OF THE MAIN ROUTE SHALL BE PROTECTED BY BLOCKING WITH TYPE III BARRICADES, 1/2 OF THE CROSS SECTION OF THE CLOSED PORTION.
- CONES MAY BE SUBSTITUTED FOR BARRICADES OR DRUMS AT HALF THE SPACING DURING DAY OPERATIONS. CONES SHALL BE A MINIMUM OF 28 (710) IN HEIGHT.
- WHEN THE SIDE ROAD LIES BETWEEN THE BEGINNING OF THE MAINLINE SIGNING AND THE WORK ZONE, A SINGLE HEADED ARROW (M6-1) SHALL BE USED IN LIEU OF THE DOUBLE HEADED ARROW (M6-4).
- WHEN WORK IS BEING PERFORMED ON A SIDE ROAD OR DRIVEWAY, FOLLOW THE APPLICABLE STANDARD(S). THE DIRECTIONAL ARROW (M6-1 OR M6-4) SHALL BE COVERED OR REMOVED WHEN NO LONGER CONSISTENT WITH THE TRAFFIC CONTROL SET-UP.
- ADVANCE WARNING SIGNS ARE TO BE OMITTED ON DRIVEWAYS UNLESS OTHERWISE SPECIFIED IN THE PLANS OR BY THE ENGINEER.
- THE TRAFFIC CONTROL AND PROTECTION FOR SIDE ROADS, INTERSECTIONS, AND DRIVEWAYS SHALL BE INCLUDED IN THE COST OF SPECIFIED TRAFFIC CONTROL STANDARDS OR ITEMS.

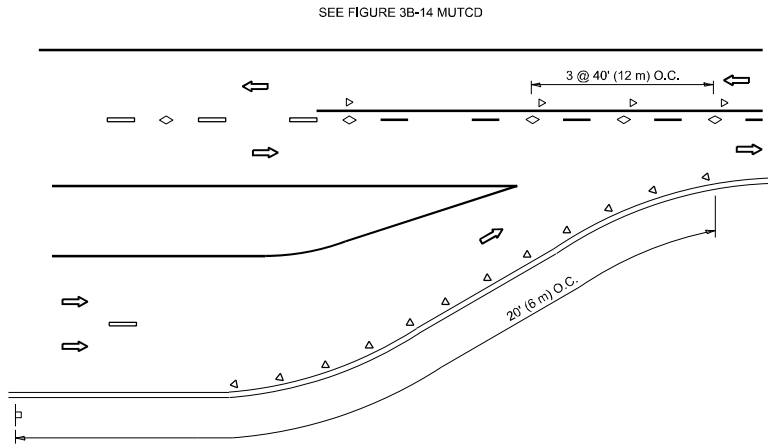
All dimensions are in inches (millimeters) unless otherwise shown.

	USER NAME = justin.king	DESIGNED - L.H.A.	REVISED - T. RAMMACHER 01-06-00	STATE OF ILLINOIS DEPARTMENT OF TRANSPORTATION	TRAFFIC CONTROL AND PROTECTION FOR SIDE ROADS, INTERSECTIONS, AND DRIVEWAYS	SCALE:	SHEET	OF	SHEETS	STA.	TO STA.	F.A.P RTE.	SECTION	COUNTY	TOTAL SHEETS	SHEET NO.			
		DRAWN -	REVISED - A. SCHUETZE 07-01-13									856	2025-1087-RS	WILL	24	18			
		CHECKED -	REVISED - A. SCHUETZE 09-15-06									TC-10					CONTRACT NO. 80B14		
	PLOT DATE = 8/13/2025	DATE - 06-89	REVISED - D. SENDERAK 05-03-24									ILLINOIS FED. AID PROJECT							

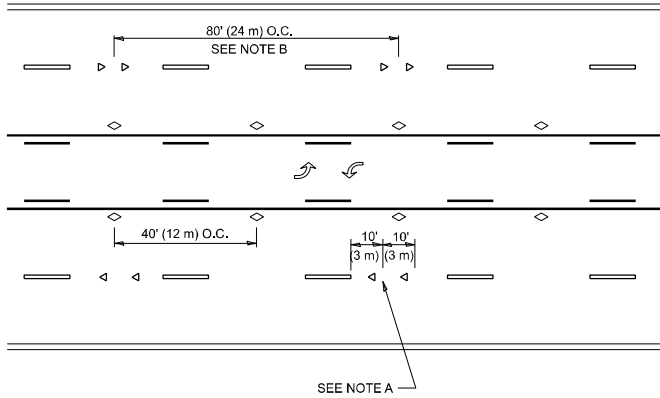
MODEL: TC-11 [Sheet]
FILE NAME: c:\p\work\illinois.gov\id112512\ID116725-shh-DlssStd.dgn



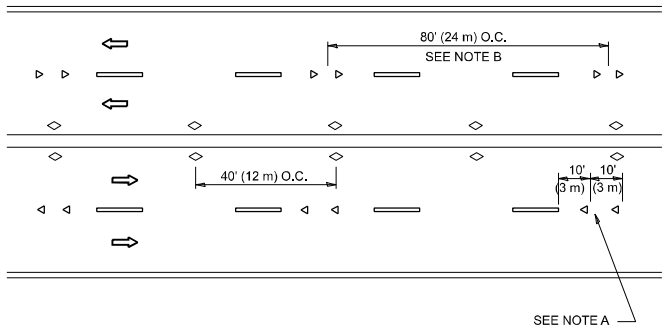
TWO-LANE/TWO-WAY



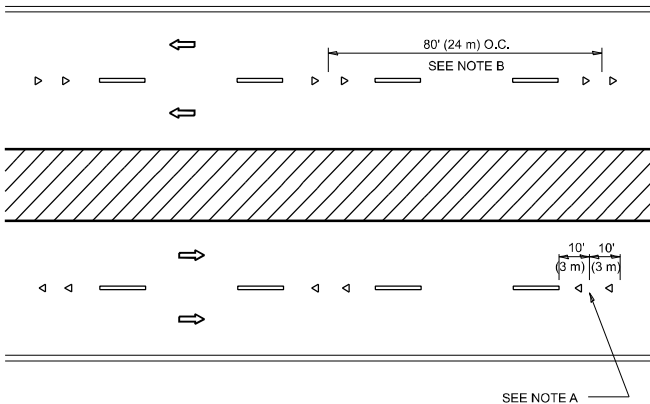
LANE REDUCTION TRANSITION



TWO-WAY LEFT TURN



MULTI-LANE/UNDIVIDED



MULTI-LANE/DIVIDED

GENERAL NOTES

- MARKERS USED WITH DASHED LINES SHALL BE CENTERED IN THE GAP BETWEEN SEGMENTS.
- MARKERS USED ADJACENT TO SOLID LINES SHALL BE OFFSET 2 TO 3 (50 TO 75) TOWARD TRAFFIC AS SHOWN.
- MARKERS THROUGH TANGENTS LESS THAN 500' (150 m) IN LENGTH BETWEEN CURVES SHALL BE INSTALLED AT THE LESSER OF THE TWO CURVE SPACINGS.
- MARKERS ARE TO BE USED ADJACENT TO BOTH SOLID WHITE LINES IN DUAL LEFT TURN LANES

SYMBOLS

- YELLOW STRIPE
- WHITE STRIPE
- ONE-WAY AMBER MARKER
- ONE-WAY CRYSTAL MARKER (W/O)
- TWO-WAY AMBER MARKER

LANE MARKER NOTES

- USE DOUBLE LANE LINE MARKERS SPACED AS SHOWN.
- REDUCE TO 40' (12 m) O.C. ON CURVES WHERE ADVISORY SPEEDS ARE 10 M.P.H (20 km/h) LOWER THAN POSTED SPEEDS.

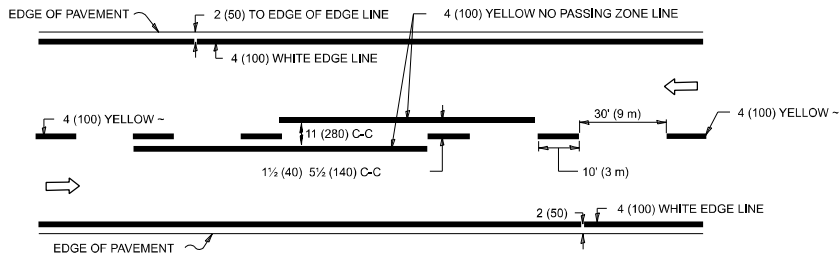
DESIGN NOTES

- DOUBLE LANE LINE MARKERS SHALL BE USED UNLESS SPECIFIED OTHERWISE.
- EXCEPT AS SHOWN ON THE LANE REDUCTION TRANSITION AND FREEWAY EXIT RAMP DETAIL, MARKERS ARE NOT TO BE SPECIFIED ON RIGHT EDGE LINES.
- THE EXACT MARKER LIMITS, SPACING, AND COLOR SHALL BE INCLUDED IN THE PLANS WHEN STANDARD SPECIFICATIONS ARE NOT BEING USED.
- MARKERS SHOULD NOT BE USED ALONGSIDE CURBS EXCEPT FOR EXTREMELY SHORT SECTIONS OF CURBS WHERE NOT MORE THAN TWO MARKERS WOULD BE INVOLVED.

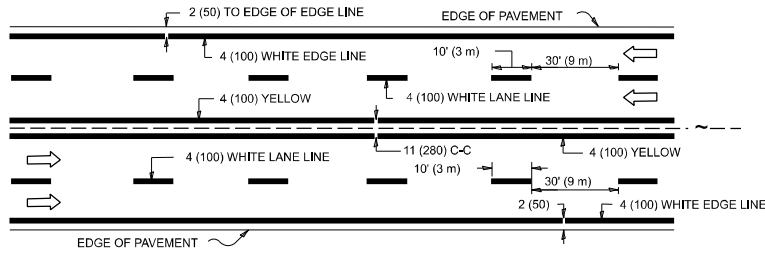
All dimensions are in inches (millimeters)
unless otherwise shown.

	USER NAME = justin.king	DESIGNED -	REVISED - T. RAMMACHER 03-12-99	STATE OF ILLINOIS DEPARTMENT OF TRANSPORTATION	TYPICAL APPLICATIONS RAISED REFLECTIVE PAVEMENT MARKERS (SNOW-PLOW RESISTANT)				F.A.P RTE.	SECTION	COUNTY	TOTAL SHEETS	SHEET NO.
		DRAWN -	REVISED - T. RAMMACHER 01-06-00						856	2025-1087-RS	WILL	24	19
		CHECKED -	REVISED - C. JUCIUS 09-09-09		TC-11					CONTRACT NO. 80B14			
	PLOT DATE = 8/13/2025	DATE -	REVISED - C. JUCIUS 07-01-13		SCALE: NONE		SHEET 1	OF 1	SHEETS	STA.	TO STA.		
											ILLINOIS FED. AID PROJECT		

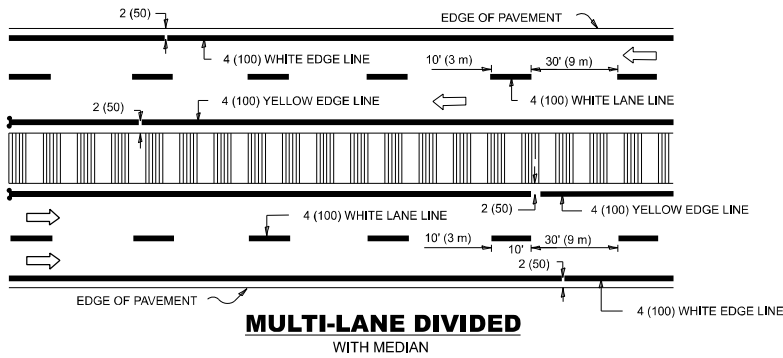
MODEL: TC-13 (Sheet)
FILE NAME: c:\paw\work\illinois.gov\justin.king\1122512\116725-shh-DistStd.dgn



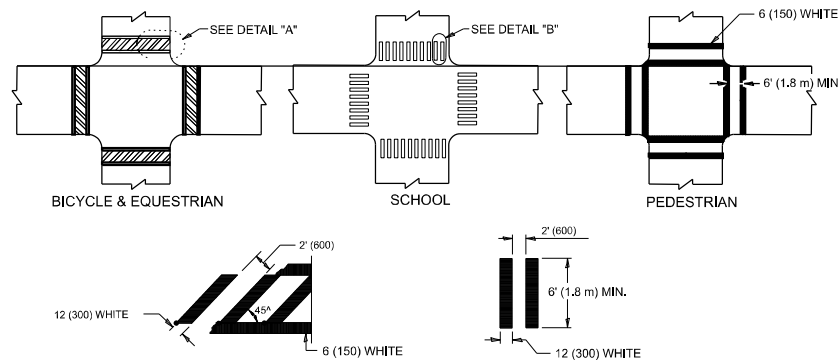
2-LANE ROADWAY



MULTI-LANE UNDIVIDED



TYPICAL LANE AND EDGE LINE MARKING

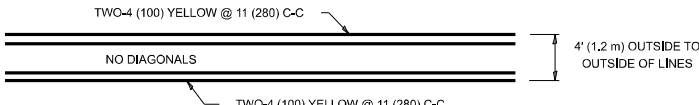


DETAIL "A"

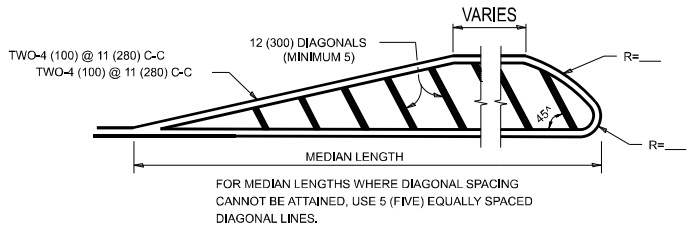
DETAIL "B"

TYPICAL CROSSWALK MARKING

* MARKINGS SHALL BE INSTALLED PARALLEL TO THE CENTERLINE OF THE ROAD WHICH IT CROSSES

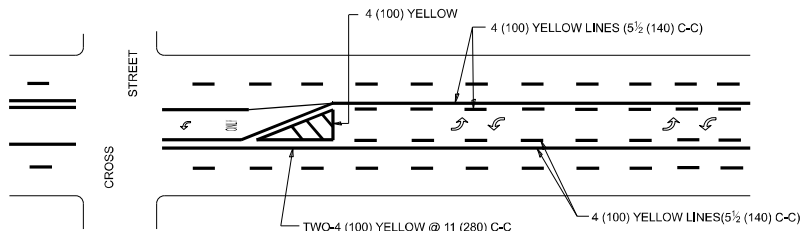


4' (1.2 m) WIDE MEDIANS ONLY



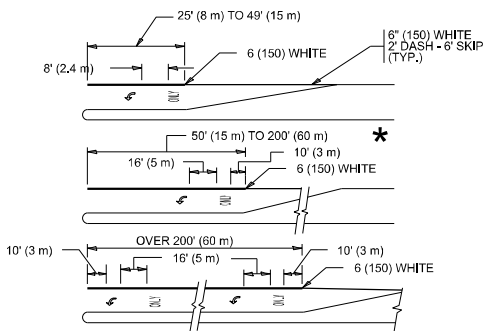
DIAGONAL LINE SPACING: 50' (15 m) C-C (LESS THAN 30MPH (50 km/h))
75' (25 m) C-C 30MPH (50 km/h) TO 45MPH (70 km/h)
150' (45 m) C-C (MORE THAN 45MPH (70 km/h))

MEDIANS OVER 4' (1.2 m) WIDE



A MINIMUM OF TWO PAIRS OF TURN ARROWS SHALL BE USED, WHITE IN COLOR. ADDITIONAL PAIRS SHALL BE PLACED AT 200' (60 m) TO 300' (90 m) INTERVALS.

MEDIAN WITH TWO-WAY LEFT TURN LANE TYPICAL PAINTED MEDIAN MARKING

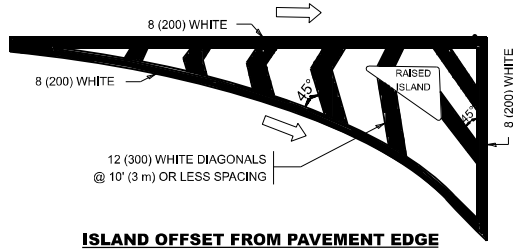


FULL SIZE LETTERS 8' (2.4 m) AND ARROWS SHALL BE USED.
AREA = 15.6 SQ. FT. (1.5 m²) ONLY AREA = 20.8 SQ. FT. (1.9 m²)

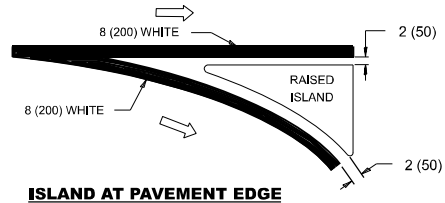
* TURN LANES IN EXCESS OF 400' (120 m) IN LENGTH MAY HAVE AN ADDITIONAL SET OF ARROW - "ONLY" INSTALLED MIDWAY BETWEEN THE OTHER TWO SETS OF ARROW - "ONLY".

TYPICAL LEFT (OR RIGHT) TURN LANE

TYPICAL TURN LANE MARKING

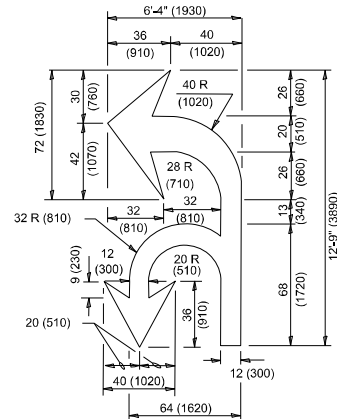


ISLAND OFFSET FROM PAVEMENT EDGE

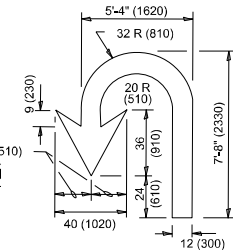


ISLAND AT PAVEMENT EDGE

TYPICAL ISLAND MARKING



COMBINATION LEFT AND U-TURN



U-TURN

LANE REDUCTION TRANSITION

* LANE REDUCTION ARROWS REQUIRED AT SPEEDS OF 45 MPH OR GREATER OR WHEN SPECIFIED IN PLANS.

TYPE OF MARKING	WIDTH OF LINE	PATTERN	COLOR	SPACING / REMARKS
CENTERLINE ON 2 LANE PAVEMENT	4 (100)	SKIP-DASH	YELLOW	10' (3 m) LINE WITH 30' (9 m) SPACE
CENTERLINE ON MULTI-LANE UNDIVIDED PAVEMENT	2 @ 4 (100)	SOLID	YELLOW	11 (280) C-C
NO PASSING ZONE LINES: FOR ONE DIRECTION FOR BOTH DIRECTIONS	4 (100) 2 @ 4 (100)	SOLID SOLID	YELLOW YELLOW	5 1/2 (140) C-C FROM SKIP-DASH CENTERLINE 11 (280) C-C OMIT SKIP-DASH CENTERLINE BETWEEN
LANE LINES	4 (100) 5 (125) ON FREEWAYS	SKIP-DASH SKIP-DASH	WHITE WHITE	10' (3 m) LINE WITH 30' (9 m) SPACE
DOTTED LINES (EXTENSIONS OF CENTER, LANE OR TURN LANE MARKINGS)	SAME AS LINE BEING EXTENDED	SKIP-DASH	SAME AS LINE BEING EXTENDED	2' (600) LINE WITH 6' (1.8 m) SPACE
EDGE LINES	4 (100)	SOLID	YELLOW-LEFT WHITE-RIGHT	OUTLINE MEDIANS IN YELLOW
TURN LANE MARKINGS	6 (150) LINE: FULL SIZE LETTERS & SYMBOLS (8' (2.4m))	SOLID	WHITE	SEE TYPICAL TURN LANE MARKING DETAIL
TWO WAY LEFT TURN MARKING	2 @ 4 (100) EACH DIRECTION 8' (2.4m) LEFT ARROW	SKIP-DASH AND SOLID IN PAIRS	YELLOW WHITE	10' (3 m) LINE WITH 30' (9 m) SPACE FOR SKIP-DASH: 5 1/2 (140) C-C BETWEEN SOLID LINE AND SKIP-DASH LINE SEE TYPICAL TWO-WAY LEFT TURN MARKING DETAIL
CROSSWALK LINES (PEDESTRIAN) A. DIAGONALS (BIKE & EQUESTRIAN) B. LONGITUDINAL BARS (SCHOOL)	2 @ 6 (150) 12 (300) @ 45° 12 (300) @ 90°	SOLID SOLID SOLID	WHITE WHITE WHITE	NOT LESS THAN 6' (1.8 m) APART 2' (600) APART 2' (600) APART SEE TYPICAL CROSSWALK MARKING DETAILS.
STOP LINES	24 (600)	SOLID	WHITE	PLACE 4' (1.2 m) IN ADVANCE OF AND PARALLEL TO CROSSWALK, IF PRESENT. OTHERWISE, PLACE AT DESIRED STOPPING POINT, PARALLEL TO CROSSROAD CENTERLINE, WHERE POSSIBLE
PAINTED MEDIANS	2 @ 4 (100) WITH 12 (300) DIAGONALS @ 45° NO DIAGONALS USED FOR 4' (1.2 m) WIDE MEDIANS	SOLID	YELLOW: TWO WAY TRAFFIC WHITE: ONE WAY TRAFFIC	11 (280) C-C FOR THE DOUBLE LINE SEE TYPICAL PAINTED MEDIAN MARKING.
GORE MARKING AND CHANNELIZING LINES	8 (200) WITH 12 (300) DIAGONALS @ 45°	SOLID	WHITE	DIAGONALS: 15' (4.5 m) C-C (LESS THAN 30MPH (50 km/h)) 20' (6 m) C-C 30MPH (50 km/h) TO 45MPH (70 km/h) 30' (9 m) C-C (OVER 45MPH (70 km/h))
RAILROAD CROSSING	24 (600) TRANSVERSE LINES: "RR" IS 8' (1.8 m) LETTERS: 16 (400) LINE FOR "X"	SOLID	WHITE	SEE STATE STANDARD 780001 AREA OF: "R"=3.6 SQ. FT. (0.33 m ²) EACH "X"=54.0 SQ. FT. (5.0 m ²)
SHOULDER DIAGONALS (REQUIRED FOR SHOULDERS ≥ 8')	12 (300) @ 45°	SOLID	WHITE - RIGHT YELLOW - LEFT	50' (15 m) C-C (LESS THAN 30MPH (50 km/h)) 75' (25 m) C-C (30 MPH (50 km/h) TO 45MPH (70 km/h)) 150' (45 m) C-C (OVER 45MPH (70 km/h))
U TURN ARROW	SEE DETAIL	SOLID	WHITE	16.3 SF
2 ARROW COMBINATION LEFT AND U TURN	SEE DETAIL	SOLID	WHITE	30.4 SF

FOR FURTHER DETAILS ON PAVEMENT MARKING REFER TO
STANDARD SPECIFICATIONS FOR ROAD AND BRIDGE
CONSTRUCTION AND STATE STANDARD 780001.

All dimensions are in inches (millimeters)
unless otherwise shown.

USER NAME = justin.king	DESIGNED - EVERS	REVISED - C. JUCIUS 09-09-09
	DRAWN -	REVISED - C. JUCIUS 07-01-13
	CHECKED -	REVISED - C. JUCIUS 12-21-15
PLOT DATE = 8/13/2025	DATE - 03-19-90	REVISED - C. JUCIUS 04-12-16

STATE OF ILLINOIS
DEPARTMENT OF TRANSPORTATION

DISTRICT ONE
TYPICAL PAVEMENT MARKINGS

SCALE: NONE SHEET 1 OF 1 SHEETS STA. TO STA.

F.A.P RTE.	SECTION	COUNTY	TOTAL SHEETS	SHEET NO.
856	2025-1087-RS	WILL	24	20
TC-13		CONTRACT NO. 80B14		
		ILLINOIS	FED. AID PROJECT	

TURN BAY ENTRANCE AT START
OF LANE CLOSURE TAPER

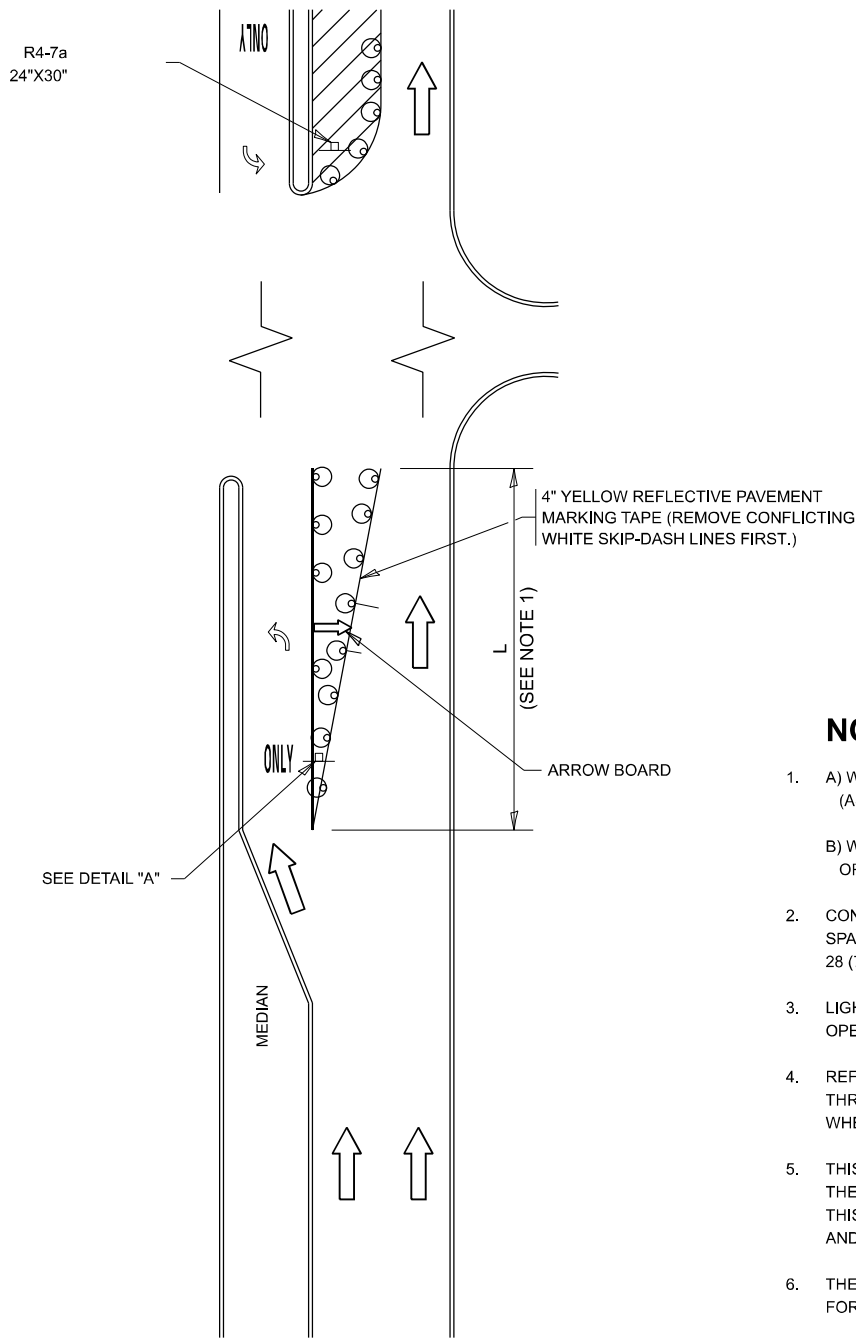
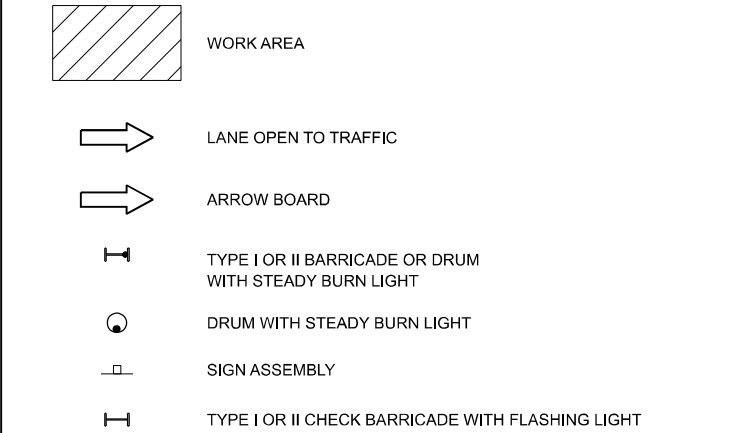


FIGURE 1

LEGEND



NOTES:

- A) WHEN "L" IS \leq THE STORAGE LENGTH OF THE TURN LANE (AS SHOWN IN FIG. 1), USE FIGURE 1.
B) WHEN "L" IS $>$ THE STORAGE LENGTH OF THE TURN LANE OR THE TURN LANE IS WITHIN THE LANE CLOSURE, USE FIGURE 2.
- CONES MAY BE SUBSTITUTED FOR BARRICADES OR DRUMS AT HALF THE SPACING DURING DAY OPERATIONS. CONES SHALL BE A MINIMUM OF 28 (710) IN HEIGHT.
- LIGHTS WILL NOT BE REQUIRED ON BARRICADES OR DRUMS FOR DAY OPERATIONS. ALL LIGHTS SHALL BE MONODIRECTIONAL.
- REFLECTIVE TEMPORARY PAVEMENT MARKINGS SHALL BE PLACED THROUGHOUT THE BARRICADED AREAS OF EACH TURN BAY AS SHOWN WHERE THE CLOSURE TIME IS GREATER THAN FOURTEEN (14) DAYS.
- THIS APPLICATION ALSO APPLIES WHEN WORK IS BEING PERFORMED IN THE RIGHT LANE(S) AND THE RIGHT TURN BAY IS TO REMAIN OPEN. UNDER THIS CONDITION, "RIGHT TURN LANE" R3-1100R 24 x 24 (600 x 600) AND M6-2R 21 x 15 (530 x 380) SHALL BE USED.
- THESE CONTROLS SHALL SUPPLEMENT MAINLINE TRAFFIC CONTROL FOR LANE CLOSURES.
- THE SIGNS SHALL BE MOUNTED ABOVE THE BARRICADES/DRUMS ON SEPARATE SIGN SUPPORTS THAT MEET NCHRP 350 OR MASH REQUIREMENTS.
- TRAFFIC CONTROL AND PROTECTION AT TURN BAYS (TO REMAIN OPEN TO TRAFFIC) SHALL BE INCLUDED IN THE COST OF SPECIFIED TRAFFIC CONTROL STANDARDS OR ITEMS.

TURN BAY ENTRANCE
WITHIN A LANE CLOSURE

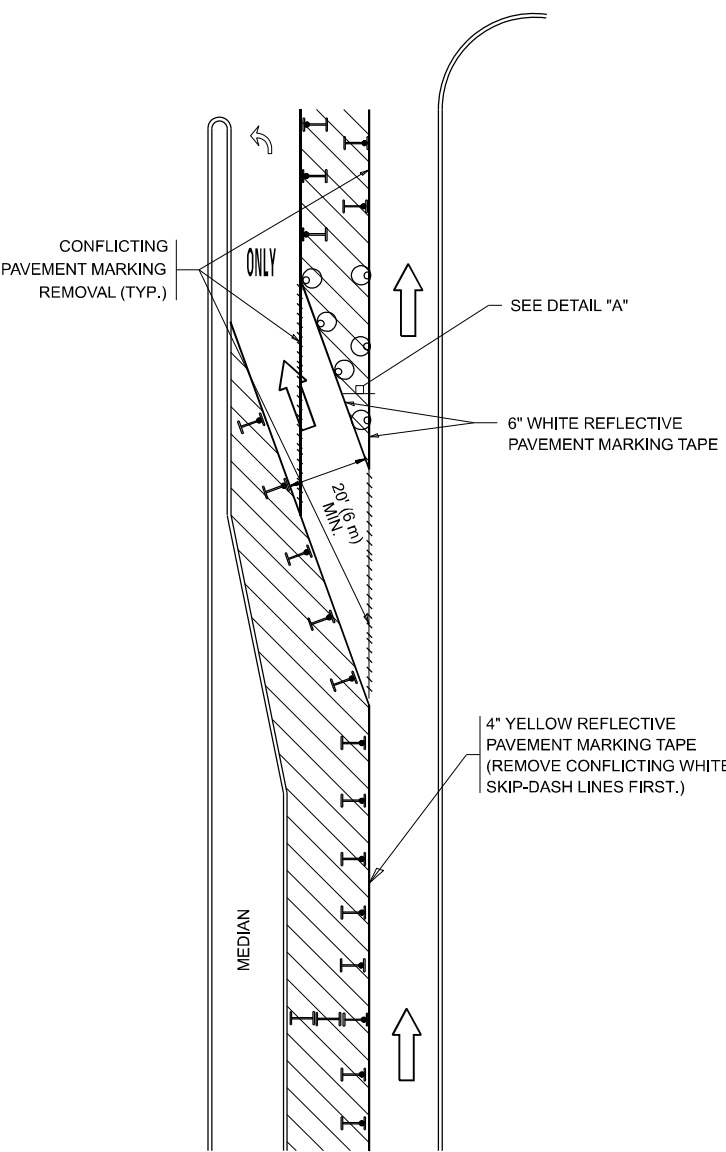
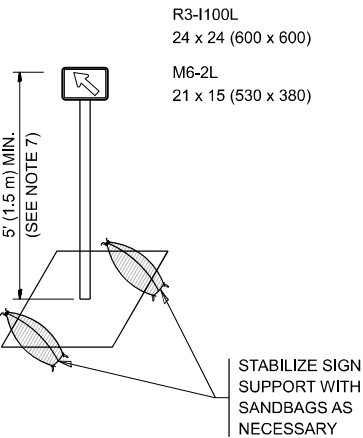


FIGURE 2



DETAIL A

All dimensions are in inches (millimeters) unless otherwise shown.

MODEL: TC-14 [Sheet]
FILE NAME: c:\p\work\illinois.gov\1122512\116725-shh-DistStd.dgn

USER NAME	= justin.king
DESIGNED	- T. RAMMACHER 09-08-94
DRAWN	- A. HOUSEH 11-07-95
CHECKED	- A. HOUSEH 10-12-96
PLOT DATE	= 8/13/2025
DATE	- T. RAMMACHER 01-06-00

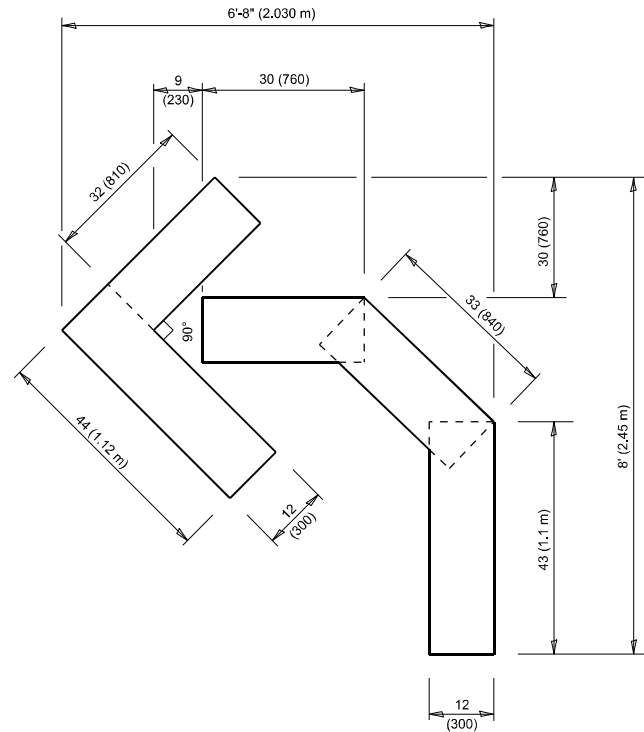
REVISED	- R. BORO 09-14-09
REVISED	- A. SCHUETZE 07-01-13
REVISED	- A. SCHUETZE 09-15-16
REVISED	-

STATE OF ILLINOIS
DEPARTMENT OF TRANSPORTATION

TRAFFIC CONTROL AND PROTECTION AT TURN BAYS
(TO REMAIN OPEN TO TRAFFIC)

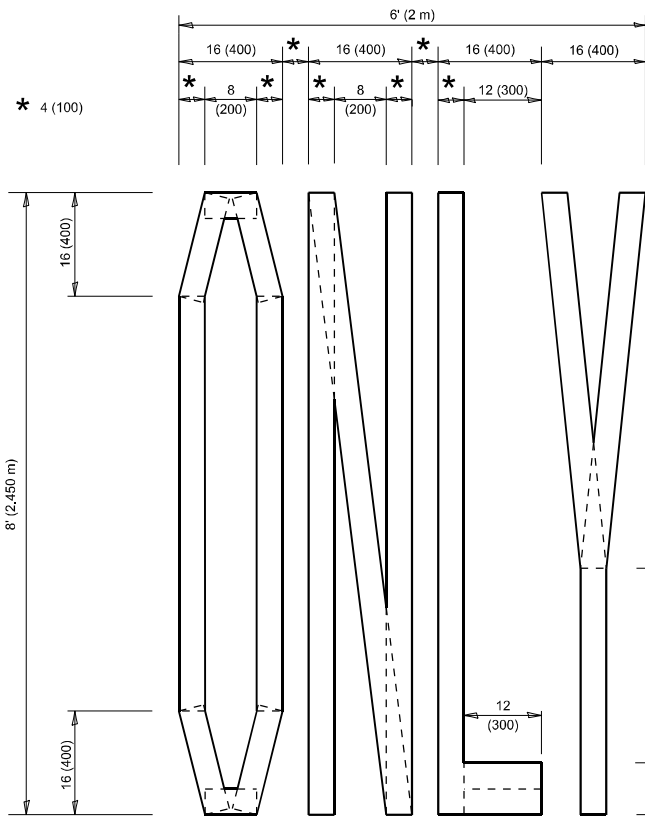
SCALE: NONE SHEET 1 OF 1 SHEETS STA. TO STA.

F.A.P RTE.	SECTION	COUNTY	TOTAL SHEETS	SHEET NO.
856	2025-1087-RS	WILL	24	21
TC-14		CONTRACT NO. 80B14		
ILLINOIS		FED. AID PROJECT		



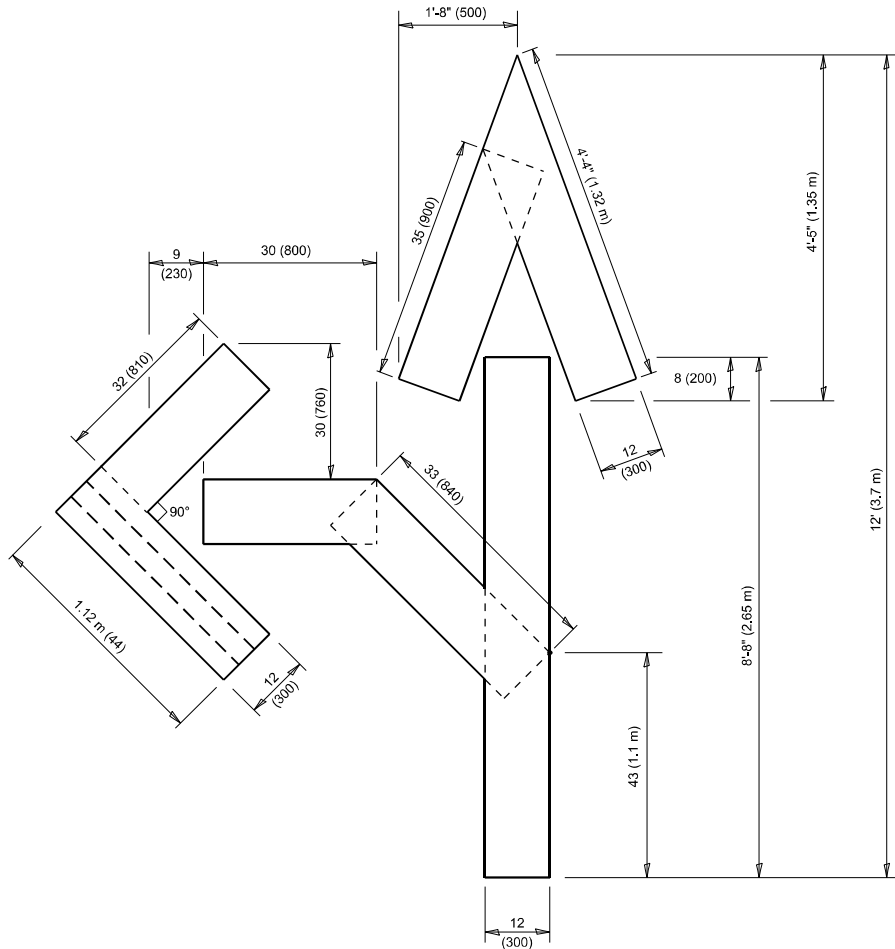
QUANTITY

4 (100) LINE = 45.5 ft. (13.9 m)
15.2 sq. ft. (1.41 sq. m)



QUANTITY

4 (100) LINE = 64.1 ft. (19.5 m)
21.4 sq. ft. (1.99 sq. m)

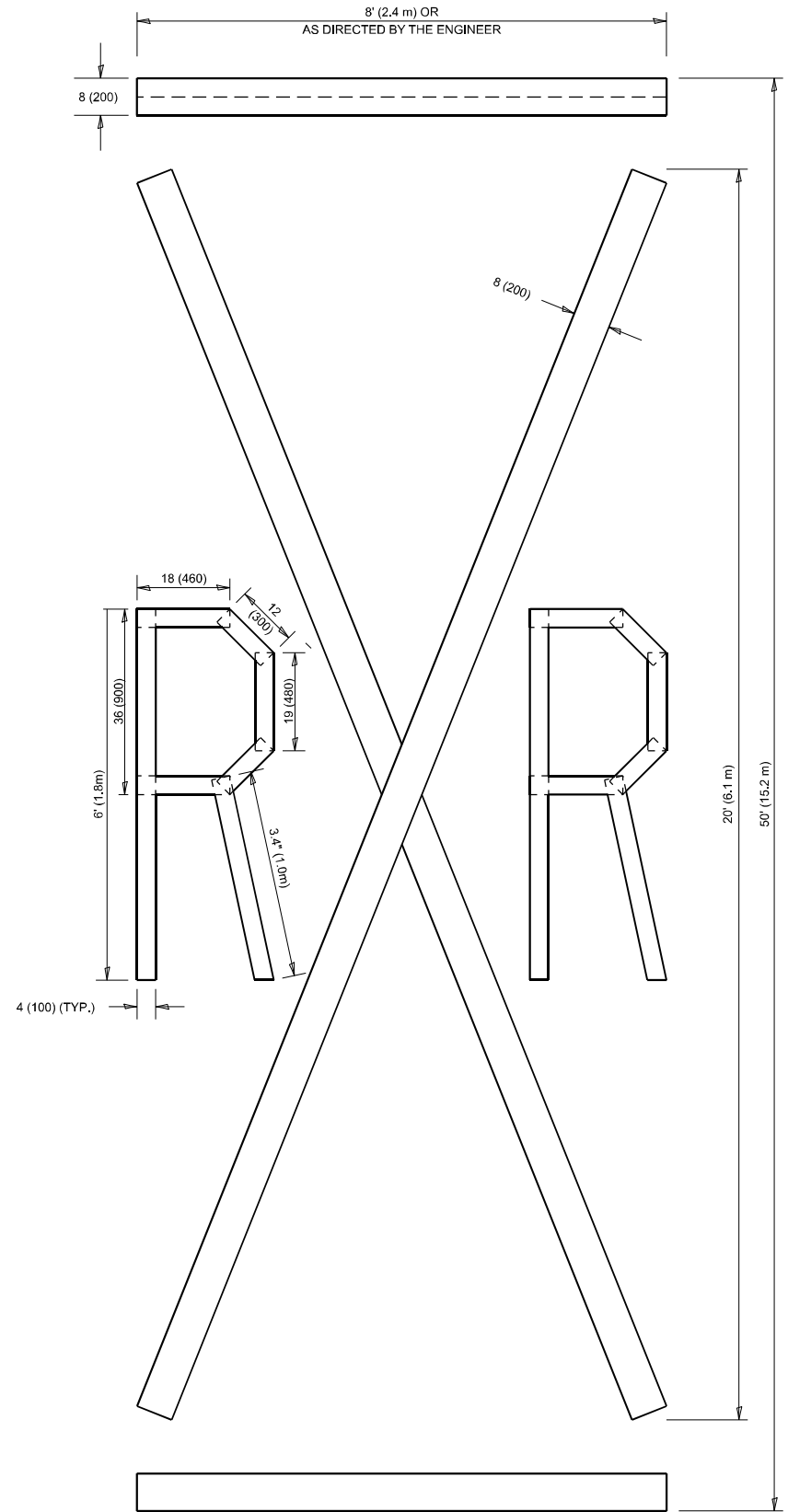


QUANTITY

4 (100) LINE = 82.5 ft. (25.1 m)
27.5 sq. ft. (2.53 sq. m)

NOTE:

ALL QUANTITIES OF PLACEMENT ARE REPRESENTED IN LINEAR FEET OF 4" LINES TO MATCH THE 4" TEMPORARY TAPE PAY ITEM AND REPRESENTS THE TOTAL QUANTITY OF 4" TAPE REQUIRED.



QUANTITY

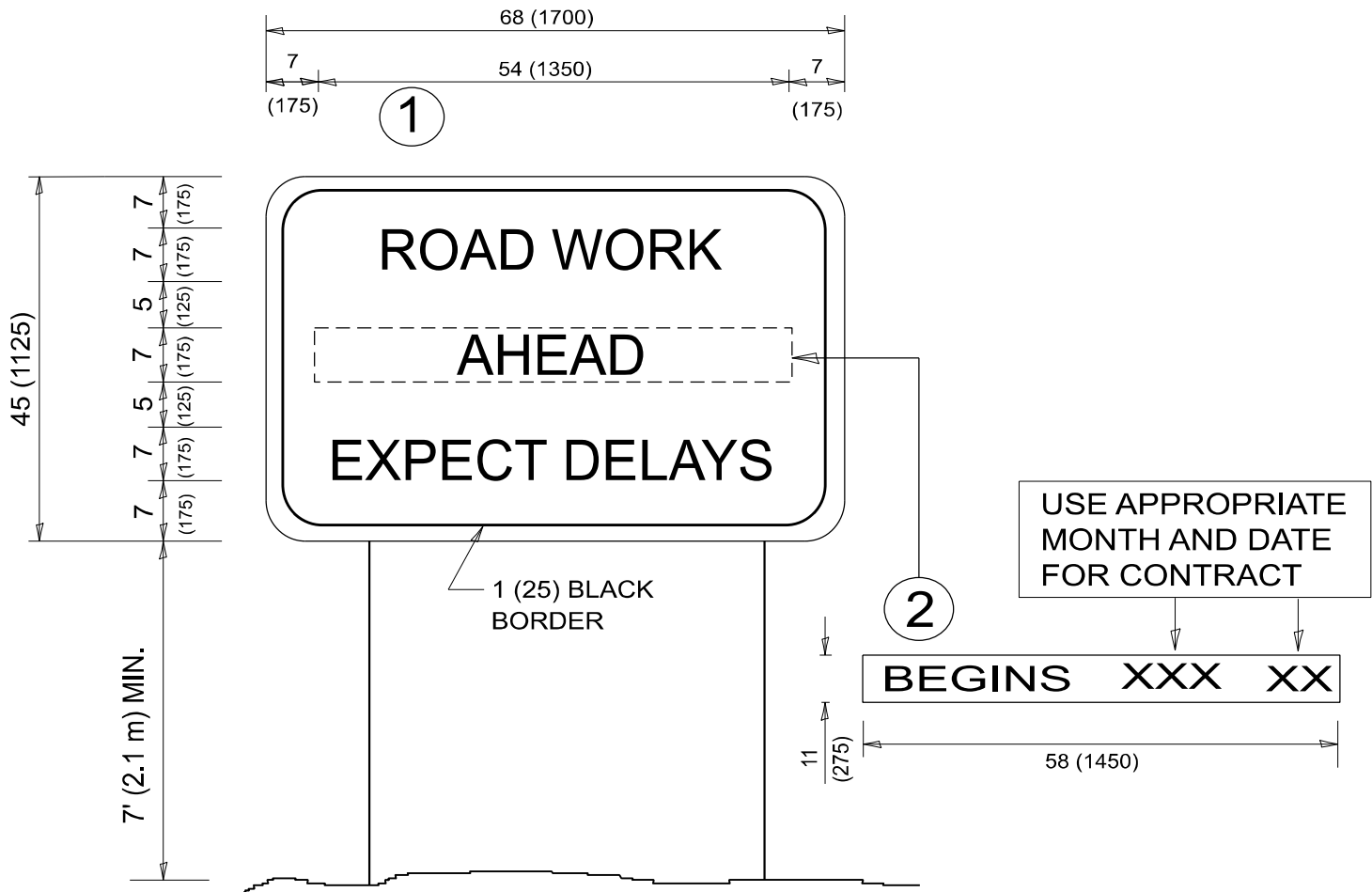
4 (100) LINE = 225.9 ft. (68.9 m)
75.3 sq. ft. (6.99 sq. m)

All dimensions are in inches (millimeters) unless otherwise shown.

MODEL: TC-16 (Sheet)
FILE NAME: c:\p\work\illinois.gov\1122512\116725-shh-DhsStd.dgn

	USER NAME = justin.king		DESIGNED -	REVISED - T. RAMMACHER 03-02-98	STATE OF ILLINOIS DEPARTMENT OF TRANSPORTATION	SHORT TERM PAVEMENT MARKING LETTERS AND SYMBOLS				F.A.P RTE.	SECTION	COUNTY	TOTAL SHEETS	SHEET NO.	
			DRAWN -	REVISED - E. GOMEZ 08-28-00						856	2025-1087-RS	WILL	24	22	
			CHECKED -	REVISED - E. GOMEZ 08-28-00		TC-16				CONTRACT NO. 80B14					
	PLOT DATE = 8/13/2025		DATE - 09-18-94	REVISED - A. SCHUETZE 09-15-16		SCALE: NONE		SHEET 1	OF 1	SHEETS	STA.	TO STA.			

MODEL: TC-22 [Sheet]
FILE NAME: c:\p\work\pwrtd\illinois.gov\id112512\id116725-shh-DlsStd.dgn

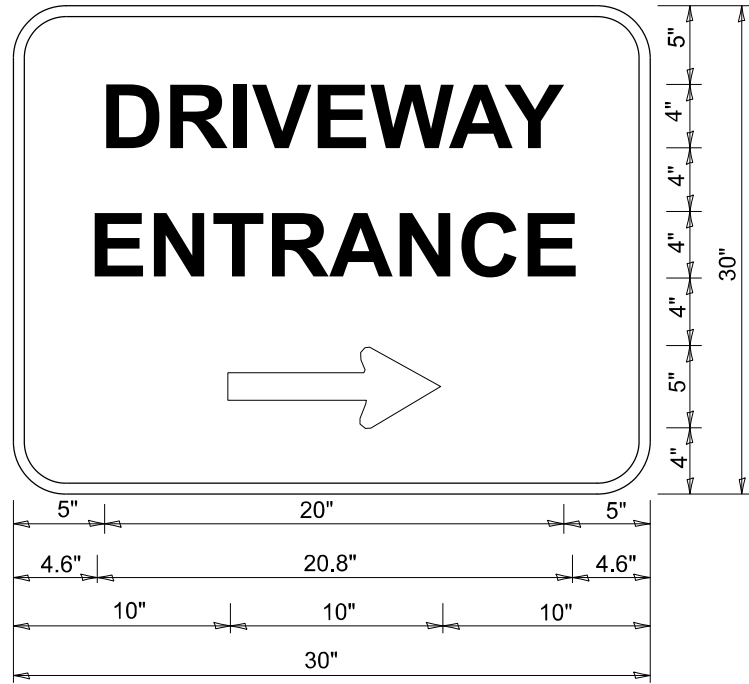


NOTES:

1. USE BLACK LETTERING ON ORANGE BACKGROUND.
2. ERECT SIGNS IN ADVANCE OF THE LOCATION FOR THE "ROAD CONSTRUCTION AHEAD" SIGN AT LOCATIONS AS DIRECTED BY THE ENGINEER.
3. ERECT SIGN ① WITH INSTALLED PANEL ② ONE WEEK PRIOR TO THE START OF CONSTRUCTION.
4. REMOVE PANEL ② SOON AFTER THE START OF CONSTRUCTION.
5. SEE SPECIAL PROVISION FOR "TEMPORARY INFORMATION SIGNING" FOR ADDITIONAL INFORMATION.
6. ONE SIGN ASSEMBLY EQUALS 25.70 SQ. FT. (2.3 SQ. M.)
7. SHALL BE PAID FOR AS TEMPORARY INFORMATION SIGNING.

ALL DIMENSIONS ARE IN INCHES (MILLIMETERS)
UNLESS OTHERWISE SHOWN.

	USER NAME = justin.king	DESIGNED -	REVISED - R. MIRS 09-15-97	STATE OF ILLINOIS DEPARTMENT OF TRANSPORTATION	ARTERIAL ROAD INFORMATION SIGN					F.A.P RTE.	SECTION	COUNTY	TOTAL SHEETS	SHEET NO.	
		DRAWN -	REVISED - R. MIRS 12-11-97							856	2025-1087-RS	WILL	24	23	
		CHECKED -	REVISED - T. RAMMACHER 02-02-99							TC-22					CONTRACT NO. 80B14
	PLOT DATE = 8/13/2025	DATE -	REVISED - C. JUCIUS 01-31-07		SCALE: NONE					SHEET 1	OF 1 SHEETS	STA.	TO STA.		
												ILLINOIS FED. AID PROJECT			



3.0" RADIUS, 0.5" BORDER, WHITE ON GREEN; REFLECTORIZED
"DRIVEWAY" D; "ENTRANCE" D; STANDARD ARROW CUSTOM 12.0" x 5.0"

- NOTES:**
1. HALF OF THE SIGNS WILL REQUIRE A LEFT HAND FACING ARROW.
 2. TWO SIGNS SHALL BE USED AT EACH COMMERCIAL ENTRANCE
PLACED BACK-TO-BACK: ONE WITH A RIGHT HAND ARROW (SHOWN)
SHALL BE PLACED ON THE NEAR RIGHT SIDE THE DRIVEWAY
AND ONE WITH A LEFT HAND ARROW SHALL BE PLACED ON THE
FAR LEFT SIDE OF THE DRIVEWAY.
 3. SIGNS TO BE PAID FOR AS ITEM "TEMPORARY INFORMATION SIGNING".

MODEL: TC-26 (Sheet)
FILE NAME: c:\p\work\pilot\illinois.gov\112512\11675-shh-DhsStds.dgn

	USER NAME = justin.king	DESIGNED -	REVISED - C. JUCIUS 02-15-07	STATE OF ILLINOIS DEPARTMENT OF TRANSPORTATION	DRIVEWAY ENTRANCE SIGNING			F.A.P RTE.	SECTION	COUNTY	TOTAL SHEETS	SHEET NO.
		DRAWN -	REVISED -					856	2025-1087-RS	WILL	24	24
		CHECKED -	REVISED -		TC-26			CONTRACT NO. 80B14				
	PLOT DATE = 8/13/2025	DATE -	REVISED -		SCALE: NONE	SHEET 1	OF 1	SHEETS	STA.	TO STA.	ILLINOIS FED. AID PROJECT	