

STATE OF ILLINOIS
DEPARTMENT OF TRANSPORTATION

F.A. Var.	SECTION	COUNTY	TOTAL SHEETS	SHEET NO.
RTE.	2025-1079-I	*Various	13	1
Various		ILLINOIS	CONTRACT NO. 62Y36	

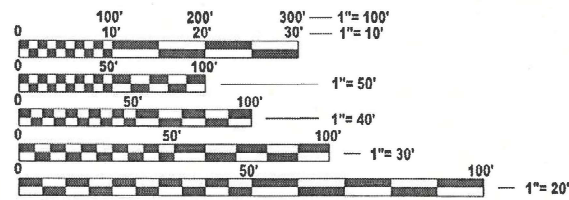
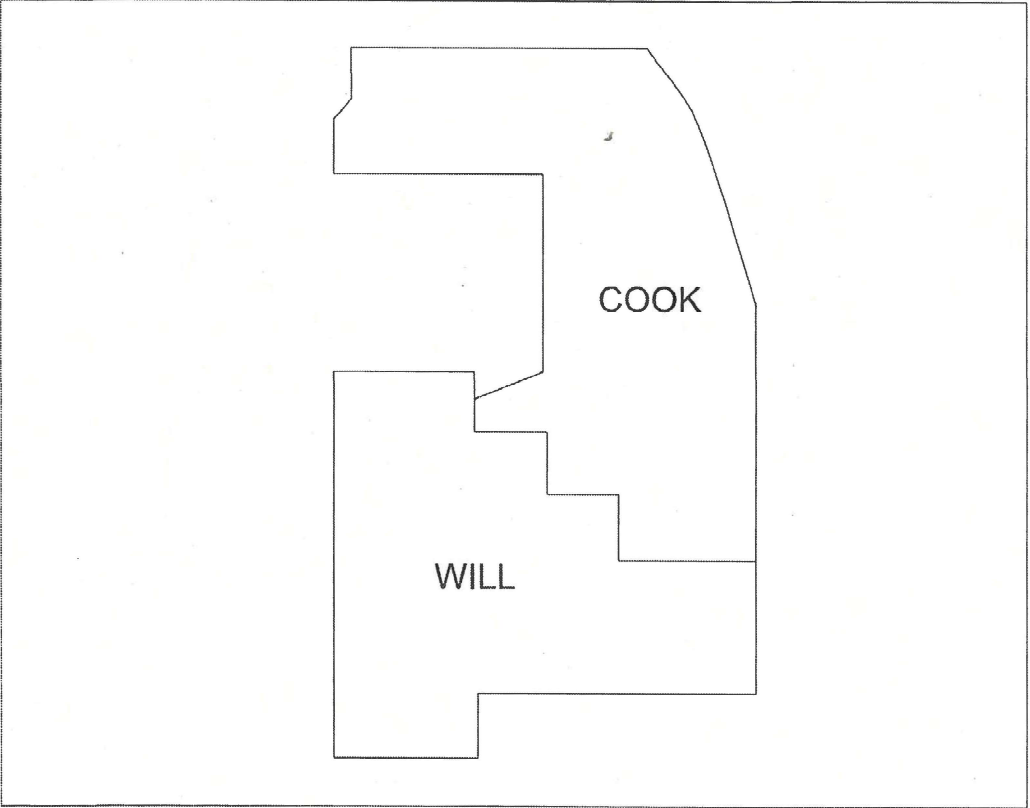
*Cook and Will

D-91-155-25



FOR INDEX OF SHEETS, SEE SHEET NO. 2

**PROPOSED
HIGHWAY PLANS**
VARIOUS ROUTES (I-55, I-57, I-80 & IL 394)
AT VARIOUS EXPRESSWAY MEDIANS
SECTION 2025-1079-I
MCHD HIGH TENSION CABLE BARRIER REPAIR
VARIOUS COUNTIES
C-91-232-25



FULL SIZE PLANS HAVE BEEN PREPARED USING STANDARD
ENGINEERING SCALES. REDUCED SIZED PLANS WILL NOT
CONFORM TO STANDARD SCALES. IN MAKING MEASUREMENTS
ON REDUCED PLANS, THE ABOVE SCALES MAY BE USED.

J.U.L.I.E.
JOINT UTILITY LOCATION INFORMATION FOR EXCAVATION
1-800-892-0123
OR 811

PROJECT ENGINEER: OSCAR OLIVEROS (847) 705-4548
PROJECT MANAGER: JACEK EJMONT (847) 705-4641

CONTRACT NO. 62Y36

STATE OF ILLINOIS
DEPARTMENT OF TRANSPORTATION

SUBMITTED Aug 21st 2025
Jose Flores
REGIONAL ENGINEER

October 3rd 2025
Sec. E. Etk
ENGINEER OF DESIGN AND ENVIRONMENT

October 3rd 2025
Harry
DIRECTOR OF HIGHWAYS PROJECT IMPLEMENTATION

PRINTED BY THE AUTHORITY
OF THE STATE OF ILLINOIS

MODEL: GenNotesSh01 [Sheet]
FILE NAME: c:\pw_work\pwtd\thanh.vo@illinois.gov\114502\1\D115525-sh01-gennote.dgn

INDEX OF SHEETS

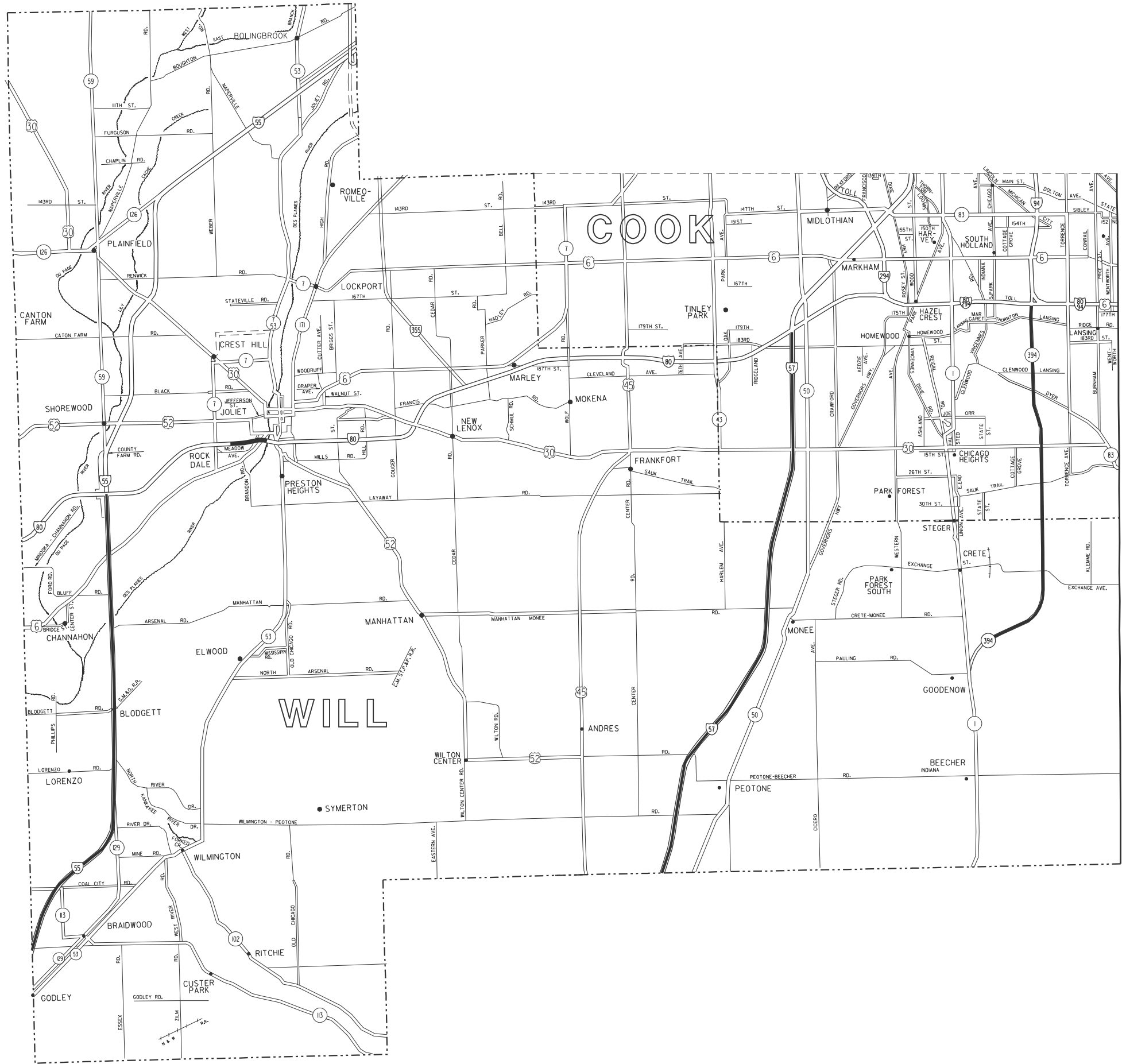
STATE STANDARDS

GENERAL NOTES

SHEET NO.	DESCRIPTION	STANDARD NO.	DESCRIPTION	
1	COVERSHEET	635001 - 12	DELINEATORS	1. BEFORE STARTING ANY EXCAVATION, THE CONTRACTOR SHALL CALL "J.U.L.I.E." AT (800) 892-0123 OR 811 FOR FIELD LOCATIONS OF BURIED ELECTRIC, TELEPHONE AND GAS UTILITIES. 48 HOUR NOTIFICATION IS REQUIRED.
2	INDEX OF SHEETS, STANDARDS AND GENERAL NOTES	701101 – 05	OFF-ROAD OPERATIONS, MULTILANE, 15' TO 24' FROM PAVEMENT EDGE	2. THE CONTRACTOR SHALL COORDINATE CONSTRUCTION ACTIVITIES WITH UTILITY COMPANIES.
3	SUMMARY OF QUANTITIES	701106 – 02	OFF-ROAD OPERATIONS, MULTILANE, MORE THAN 15' AWAY	3. THE CONTRACTOR WILL NOT BE ALLOWED TO SET UP A YARD OR FIELD OFFICE ON STATE PROPERTY WITHOUT WRITTEN PERMISSION FROM THE DEPARTMENT.
4	LOCATION MAP	701400 – 12	APPROACH TO LANE CLOSURE, FREEWAY / EXPRESSWAY	4. THE CONTRACTOR SHALL CALL STATE ELECTRICAL CONTRACTOR AT (773) 287-7600 TO LOCATE STATE OWNED FACILITIES.
5-6	HIGH TENSION GUARDRAIL DETAILS (BRIFEN USA)	701401 – 13	LANE CLOSURE, FREEWAY / EXPRESSWAY	5. THE CONTRACTOR SHALL WORK IN THE DIRECTION OF TRAFFIC.
7	HIGH TENSION GUARDRAIL DETAILS (GIBRALTAR)	701411 – 09	LANE CLOSURE, MULTILANE, AT ENTRANCE OR EXIT RAMP, FOR SPEEDS ≥ 45 MPH	6. THE CONTRACTOR WILL NOT BE ALLOWED TO STORE MATERIALS OVERNIGHT IN THE MEDIAN.
8	HIGH TENSION GUARDRAIL DETAILS (TRINITY)	701421 – 08	LANE CLOSURE, MULTILANE, DAY OPERATIONS ONLY, FOR SPEEDS ≥ 45 MPH TO 55 MPH	7. THE PROPOSED DEPTH OF THE CONCRETE SOCKETED FOUNDATIONS SHALL BE 42" (MINIMUM).
9	ENTRANCE AND EXIT RAMP CLOSURE DETAILS (TC-08)	701426 – 09	LANE CLOSURE, MULTILANE, INTERMITTENT OF MOVING OPERATONS, FOR SPEEDS ≥ 45 MPH	8. STANDARDS 701400 & 701401 SHALL BE USED FOR ALL LANE CLOSURES EXCEPT ON IL 394 SOUTH OF SAUK TRAIL, WHERE STANDARD 701421 SHALL BE USED.
10	TRAFFIC CONTROL AND PROTECTION FOR SIDE ROADS, INTERSECTIONS AND DRIVEWAYS (TC-10)	701428 – 01	TRAFFIC CONTROL SETUP AND REMOVAL FREEWAY / EXPRESSWAY	9. CONTRACTOR SHALL REGISTER, SUBMIT AND GAIN THE APPROVAL FOR ALL DAILY LANE CLOSURE REQUESTS VIA WWW.IDOTLCS.COM AT LEAST 24 HOURS IN ADVANCE OF ALL WORK.
11	TRAFFIC CONTROL AND PROTECTION AT TURN BAYS (TO REMAIN OPEN TO TRAFFIC) (TC-14)	701901 – 10	TRAFFIC CONTROL DEVICES	10. THE CONTRACTOR SHALL NOTIFY THE ILLINOIS DEPARTMENT OF TRANSPORTATION, EXPRESSWAY TRAFFIC CONTROL SUPERVISOR (847-705-4151) 72 HOURS IN ADVANCE OF ALL WORK ON THE INTERSTATE.
12	TRAFFIC CONTROL DETAILS FOR SHOULDER CLOSURE AND PARTIAL RAMP CLOSURES (TC-17)			
13	SIGNING FOR FLAGGING OPERATIONS AT WORK ZONE OPENINGS (TC-18)			

	USER NAME = thanh.vo	DESIGNED -	REVISED -	STATE OF ILLINOIS DEPARTMENT OF TRANSPORTATION	CABLE BARRIER REPAIR AT VARIOUS EXPRESSWAY MEDIANS INDEX OF SHEETS, STATE STANDARDS, AND GENERAL NOTES			F.A. Var RTE.	SECTION	COUNTY	TOTAL SHEETS	SHEET NO.
		DRAWN -	REVISED -					Various	2025-1079-I	*Various	13	2
	PLOT SCALE = \$\$SCALE\$	CHECKED -	REVISED -					CONTRACT NO. 62Y36				
	PLOT DATE = 8/20/2025	DATE -	REVISED -		SCALE:	SHEET	OF 13 SHEETS	STA.	TO STA.	ILLINOIS FED. AID PROJECT		

MODEL: DetailSheet1 (Sheet)
FILE NAME: c:\p\work\willcook\thanh.vo\illinois.gov\145021\1D115225-shd-details.dgn



LEGEND

- STATE HIGHWAYS & EXPRESSWAYS WITH EXISTING HIGH TENSION BARRIERS.
- STATE HIGHWAYS & EXPRESSWAYS WITHIN STATE JURISDICTION. (EXCEPT TOLLWAYS)
- VARIOUS AGENCIES HIGHWAYS

USER NAME = thanh.vo	DESIGNED -	REVISED -
PLOT SCALE = \$SCALE\$	DRAWN -	REVISED -
PLOT DATE = 8/21/2025	CHECKED -	REVISED -
	DATE -	REVISED -

STATE OF ILLINOIS
DEPARTMENT OF TRANSPORTATION

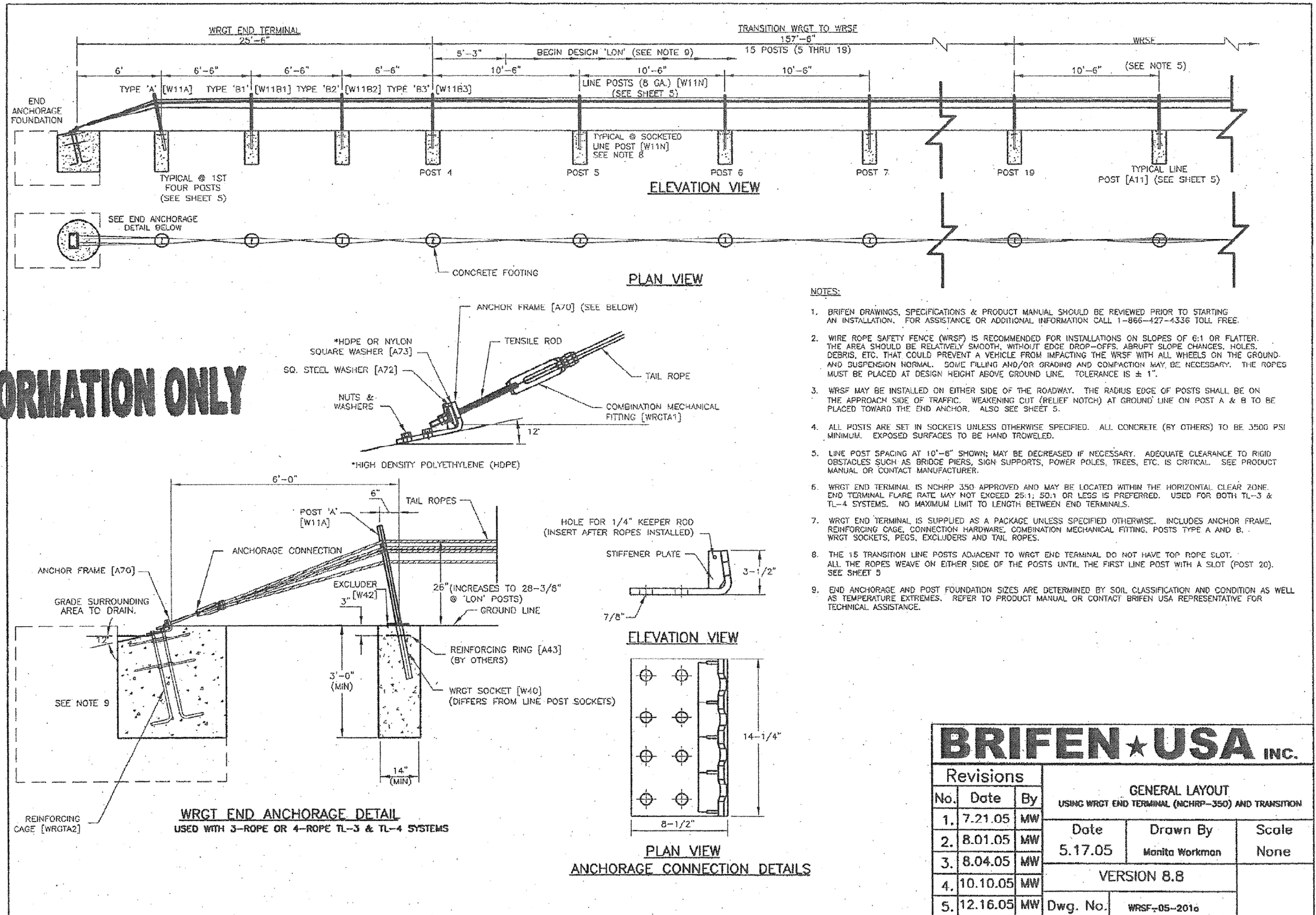
WILL & COOK (SOUTH) COUNTY LOCATION MAP

SCALE: SHEET OF 13 SHEETS STA. TO STA.

F.A. Var RTE.	SECTION	COUNTY	TOTAL SHEETS	SHEET NO.
Various	2025-1079-I	*Various	13	4
CONTRACT NO. 62Y36				
ILLINOIS FED. AID PROJECT				

*Cook and Will

FOR INFORMATION ONLY



BRIFEN★USA INC.				
Revisions			GENERAL LAYOUT	
No.	Date	By	USING WRGT END TERMINAL (NCHRP-350) AND TRANSITION	
1.	7.21.05	MW	Date	Drawn By
2.	8.01.05	MW	5.17.05	Monita Workman
3.	8.04.05	MW	Scale	
4.	10.10.05	MW	None	
5.	12.16.05	MW	VERSION 8.8	
			Dwg. No.	WRSF-05-2016

STATE OF ILLINOIS
DEPARTMENT OF TRANSPORTATION

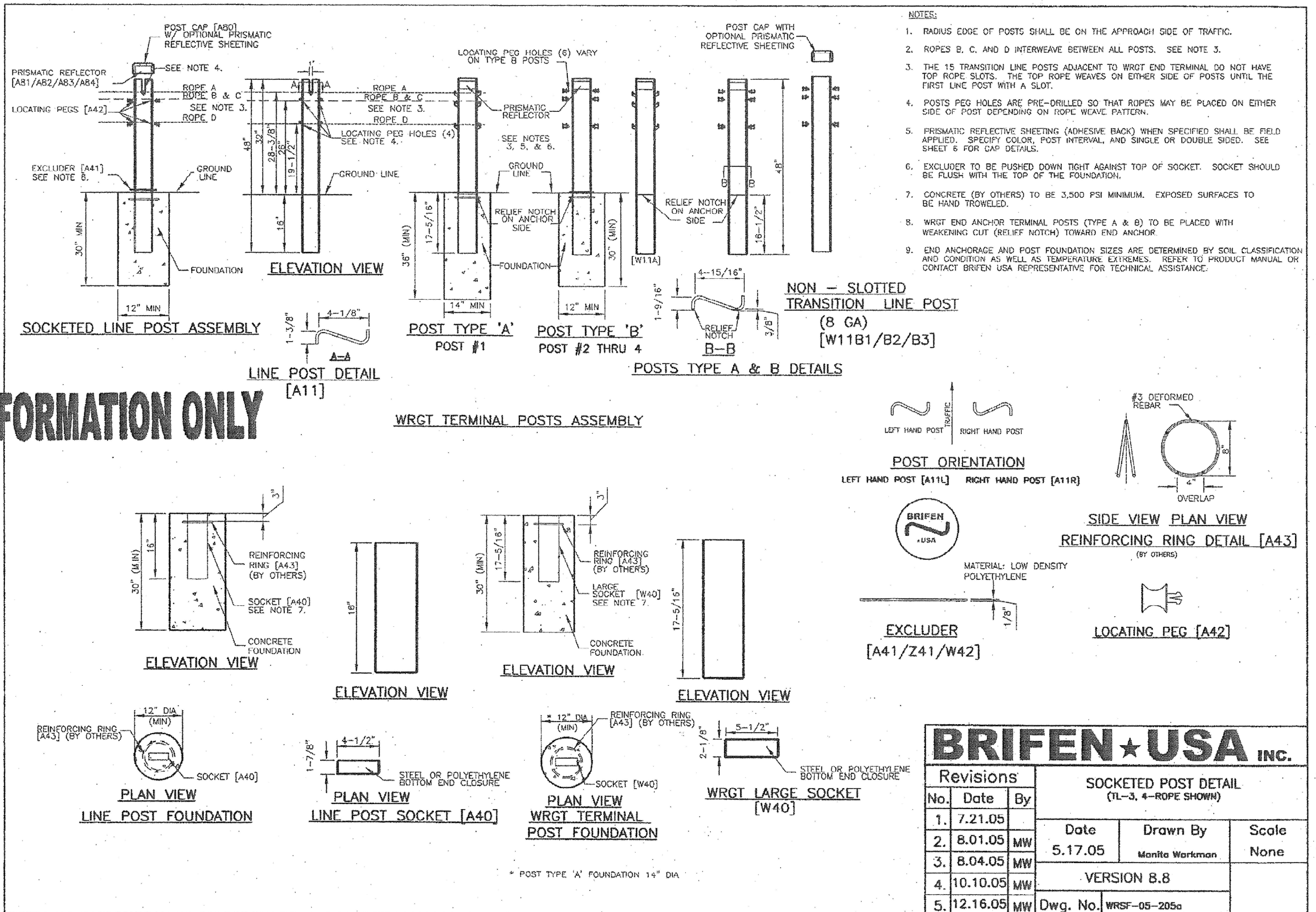
HIGH TENSION GUARDRAIL DETAILS (BRIFEN USA)

F.A. Var RTE.	SECTION	COUNTY	TOTAL SHEETS	SHEET NO.
Various	2025-1079-I	*Various	13	5
		CONTRACT NO. 62Y36		
ILLINOIS		FED. AID PROJECT		

USER NAME = thanh.vo	DESIGNED -	REVISED -
PLOT SCALE = 1/8"=1'-0"	DRAWN -	REVISED -
PLOT DATE = 8/21/2025	CHECKED -	REVISED -
	DATE -	REVISED -

SCALE: SHEET OF 13 SHEETS STA. TO STA.

FOR INFORMATION ONLY



MODEL: Details03 (Sheet)
FILE NAME: c:\pwworking\dwg\1145021\1145025-sh1-details.dgn

USER NAME = thanh.vo	DESIGNED -	REVISED -
	DRAWN -	REVISED -
PLOT SCALE = 99CALCS	CHECKED -	REVISED -
PLOT DATE = 8/21/2025	DATE -	REVISED -

STATE OF ILLINOIS
DEPARTMENT OF TRANSPORTATION

HIGH TENSION GUARDRAIL DETAILS (BRIFEN USA)				F.A. Var RTE.	SECTION	COUNTY	TOTAL SHEETS	SHEET NO.
				Various	2025-1079-I	*Various	13	6
				CONTRACT NO. 62Y36				
SCALE:	SHEET	OF 13 SHEETS	STA.	TO STA.				
				ILLINOIS FED. AID PROJECT				

*Cook and Will

GENERAL NOTES

- For additional information contact Gibraltar, Inc. at 1-800-495-8957, or see the manufacture's product manual.
- All concrete shall be minimum 2500 PSI.
- Alternate Post for bi-directional traffic flow. IF installed for traffic in one direction install cables on traffic side of posts.
- The Cable Barrier System shall be installed on shoulders or on medians with slopes of 6:1 or flatter. If installed on slopes steeper than 6:1 up to 4:1 the TL-4 system performs as a TL-3 and Gibraltar must be contacted for various guidelines related to placement.
- The Cable Barrier System is accepted by the FHWA Test Level - 4
- See the MUTCD for proper "Barrier" delineation
- Rock Clause: Where solid rock is encountered:
 - For socketed post, continue digging 12" diameter, 15' deep into rock or the required plan depth, whichever comes first.
 - For driven post, core drill a 4" diameter hole 18" deep into rock or the required plan depth, whichever comes first.
 - For Anchor post, continue digging 24" diameter, 30' deep into rock or the required plan depth, whichever comes first.
- The Gibraltar cable barrier system shall be installed in NCHRP Report 350 standard compacted soil. Soil must be well drained.
- Every component to be galvanized.

Cable Tension	
-10F	8000
0	7600
10	7200
20	6800
30	6400
40	6000
50	5600
60	5200
70	4800
80	4400
90	4000
100	3600
110	3200

Allowable Deviation from Chart +/- 10%

Deflection	Post Spacing
9'3"	30.FT
9'	28.FT
8'	20.FT
7'	12.FT
6'8"	10.FT

GIBRALTAR

320 Southland Road
Burnet, Texas 78611
1-800-495-8957

Cable Barrier System

Patent Pending

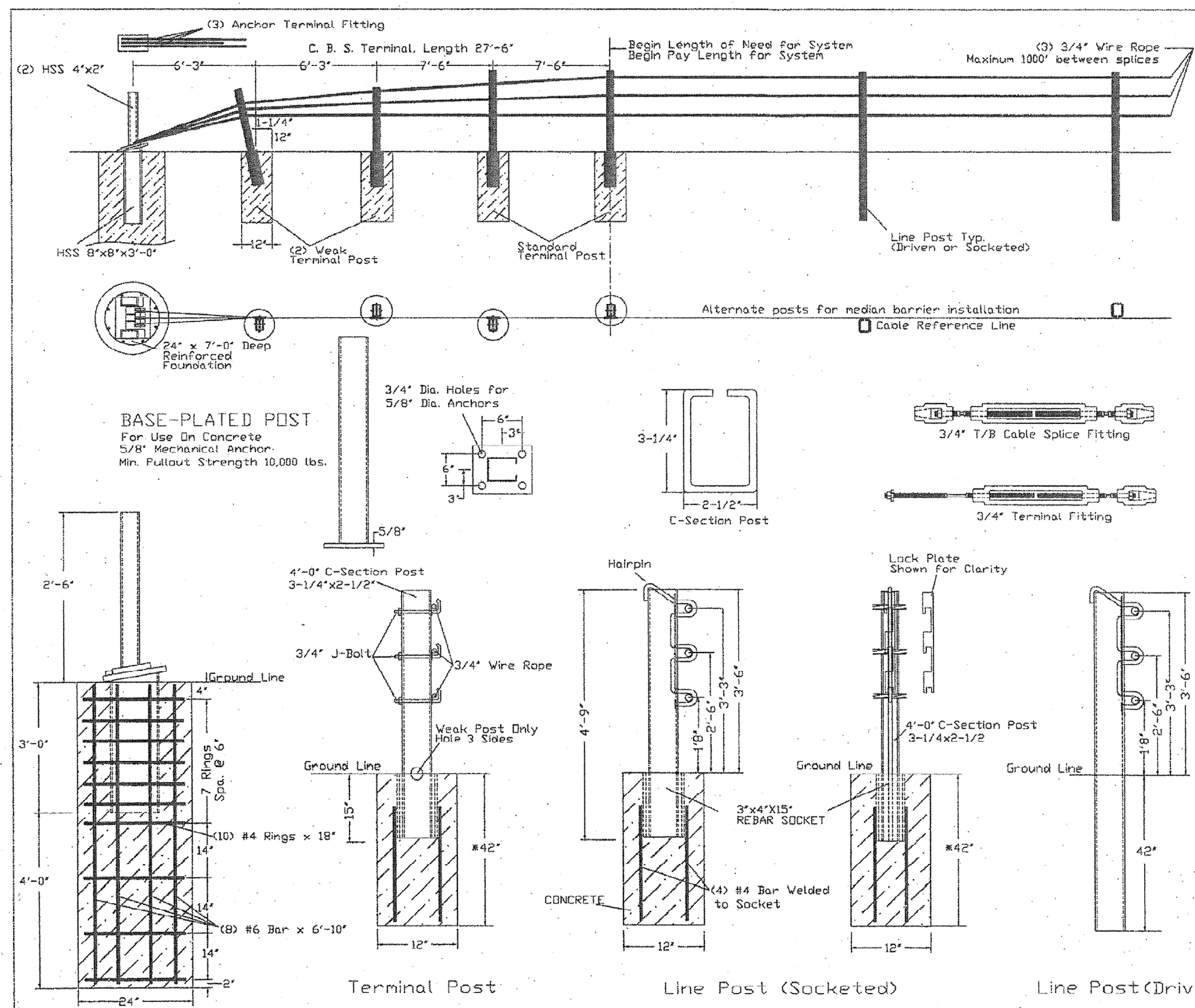
SYSTEM: TL-4

SCALE: NTS

DRAFTERS: EJ&TJ

DATE: 09/13/07

FOR INFORMATION ONLY



*30"x12" Concrete Foundation with Min. 18" wide Mow Strip
*42"x12" Deep w/o Mow Strip

MODEL: DetailSheet (Sheet)
FILE NAME: c:\pwworking\dwg\1145021\1145025-811-details.dgn

USER NAME = thanh.vo	DESIGNED -	REVISED -
PLOT SCALE = 1/8"=1'-0"	DRAWN -	REVISED -
PLOT DATE = 8/21/2025	CHECKED -	REVISED -
	DATE -	REVISED -

STATE OF ILLINOIS
DEPARTMENT OF TRANSPORTATION

HIGH TENSION GUARDRAIL DETAILS (GIBRALTAR)

SCALE: SHEET OF 13 SHEETS STA. TO STA.

FAV RTE	SECTION	COUNTY	TOTAL SHEETS	SHEET NO.
Various	2025-1079-1	*Various	13	7
CONTRACT NO. 62Y36				
ILLINOIS FED. AID PROJECT				

*Cook and Will

PREFERRED INSTALLATION: LOCATE POST #2 AWAY FROM NEAREST TRAFFIC. SYSTEM HAS BEEN SUCCESSFULLY TESTED WITH OPPOSITE INSTALLATION.

LENGTH OF NEED CASS CABLE TERMINAL (CCT): (REQUIRES PROTECTION SEE NOTE 2.)

DEPARTURE INSTALLATION: LENGTH OF NEED: 44'-9" (AT POST #8)

APPROACH INSTALLATION: LENGTH OF NEED: 19'-9" (12' PAST POST #4)

NOTES:

1. CASS-TL4 HAS BEEN SUCCESSFULLY TESTED TO NATIONAL COOPERATIVE HIGHWAY RESEARCH PROGRAM REPORT 350 TEST LEVEL 4 (NCHRP 350 TL4) AND ACCEPTED BY FHWA FOR VARIOUS POST SPACINGS. CASS CABLE TERMINAL (CCT) HAS BEEN SUCCESSFULLY TESTED AND APPROVED TO NCHRP-TL3.

2. AN NCHRP 350 TL3 APPROVED TERMINAL (CCT) OR CASS-TL4 TRANSITION (VARIOUS) SHALL BE USED ON APPROACH AND DEPARTURE TERMINATIONS WHEN CASS-TL4 IS INSTALLED ON THE NATIONAL HIGHWAY SYSTEM (NHS). IF THE TERMINATION POINT IS LOCATED OUTSIDE THE CLEAR ZONE AND/OR PROTECTED BY OTHER MEANS (CRASHWORTHY BARRIER, TERMINALS, ETC.), A NON-NCHRP 350 TL3 ANCHOR (CCA) MAY BE USED ON APPROACH AND DEPARTURE TERMINATIONS.

3. CASS-TL4 SHALL BE INSTALLED ON SHOULDERS OR MEDIANS WITH SLOPES OF 6:1 OR FLATTER WITHOUT OBSTRUCTIONS, DEPRESSIONS, ETC. THAT MAY SIGNIFICANTLY AFFECT THE STABILITY OF AN ERRANT VEHICLE. GRADING OF SITE AND/OR APPROPRIATE FILL MATERIALS MAY BE REQUIRED. THE DESIGNER/INSTALLER SHALL "FLATTEN" OR "ROUND" VARIOUS TOPOGRAPHICAL INCONSISTENCIES THAT COULD INTERFERE WITH THE ABILITY OF THE INSTALLER TO CONSISTENTLY MAINTAIN THE DESIGN HEIGHT (IN RELATION TO THE TERRAIN) OF THE CABLE. PLEASE CONSULT THE CASS MANUAL(S) FOR INSTALLATION IN "DITCH SECTIONS".

4. CASS-TL4 POST SPACING MAY BE MODIFIED TO AVOID OBSTACLES THAT CONFLICT WITH THE INSTALLATION OF CASS-TL4 LINE POSTS. NO POST SPACE CAN EXCEED THE MAXIMUM POST SPACE LIMIT OF 32'-6". OR MAXIMUM POST SPACING ALLOWED BY PROJECT ENGINEER, WHICHEVER IS LESS. REDUCING OR INCREASING POST SPACING AFFECTS DEFLECTION. CASS-TL4 MAY BE LATERALLY TRANSFERRED AT A RATE NOT TO EXCEED 30:1.

5. POST FOUNDATIONS MAY BE DRILLED THROUGH EXISTING PAVEMENT. TRINITY MAY ALLOW THE USE OF ALTERNATE LINE POST FOOTINGS IF SYSTEM IS INSTALLED WITH AN ACCEPTABLE MOWSTRIP APPLICATION - PLEASE CONTACT TRINITY.

6. FOR AESTHETIC PURPOSES TRINITY RECOMMENDS ALL SLEEVES, DRIVEN POSTS, AND LOWER CABLE RELEASE POSTS TO BE INSTALLED REASONABLY PLUMB (APPROXIMATELY 1/8" PER FOOT).

7. ALL CONCRETE SHALL HAVE A MINIMUM COMPRESSIVE STRENGTH OF 3,000 P.S.I. PRIOR TO TENSIONING THE SYSTEM. TRINITY RECOMMENDS THE CONCRETE TO BE VIBRATED IN ACCORDANCE WITH THE LATEST APPLICABLE AGENCY SPECIFICATION.

8. CASS-TL4 SHALL BE INSTALLED IN WELL-DRAINED, COMPACTED, NCHRP REPORT 350 STANDARD SOILS. IF SOIL DOESN'T MEET THIS CLASSIFICATION, IF SOLID ROCK/CONCRETE IS ENCOUNTERED BELOW GRADE OR IF SOIL IS SUSCEPTIBLE TO SEVERE FREEZE/THAW CYCLES, PLEASE CONTACT TRINITY ABOUT ALTERNATE FOOTING DESIGN(S). TRINITY SUGGESTS THE USE OF "MOW STRIPS" FOR EROSION PREVENTION AND EASE OF MAINTENANCE / INSTALLATION.

9. PLEASE SEE SPECIFYING AGENCY (OR MUTCD) FOR PROPER "BARRIER" DELINEATION.

10. PLEASE CONTACT TRINITY OR CONSULT THE DESIGN, INSTALLATION, OR REPAIR MANUAL(S) FOR ADDITIONAL INFORMATION.

TRINITY HIGHWAY PRODUCTS, LLC. EMAIL: 2525 STEMMONS FREEWAY PRODUCT.INFO@TRIN.NET DALLAS, TX 75207 PHONE: (800) 644-7976

MOW STRIP DETAIL*			CONCRETE FOOTING CHART		
MOW STRIP	DEPTH	WIDTH	FOOTING	TUBE SLEEVE	REBAR RING
NONE			30" MIN.	27" MIN.	YES
HMA	6" MIN.	3" MIN.	27" MIN.	15" MIN.	NO
HMA	8" MIN.	3" MIN.	24" MIN.	15" MIN.	NO
RC	3" MIN.	3" MIN.	24" MIN.	15" MIN.	NO

CHART DOES NOT APPLY TO TERMINAL POSTS 1 THRU 9

* MOW STRIP OR PAVEMENT

HMA = HOT MIX ASPHALT (NOT RECYCLED ASPHALT PAVEMENT)

RC = REINFORCED CONCRETE (3,000 P.S.I. MINIMUM)

No.	CASS-TL4 POST OPTIONS
1	CCT - TERMINAL POST 1 - 9 - IN CONCRETE
2	CCT - TERMINAL POST 1 - 9 - WITH SOIL PLATE
3	CASS-TL4 POST - IN CONCRETE
4	CASS-TL4 POST - DRIVEN
5	CASS-TL4 POST - BASE-PLATED
6	CASS-TL4 POST - IN DRIVEN SLEEVE
6A	DRIVEN SLEEVE - WITH NOTCH
6B	DRIVEN SLEEVE - WITH SOIL PLATE

CASS-TL4
3-CABLE GUARDRAIL
SAFETY SYSTEM

TRINITY HIGHWAY
PRODUCTS, LLC

GALV SPEC:

SHIPPING WT:

DRW: E.A.S. 4/11/2008

CHK: G.N. 4/11/2008

SH: 1 OF 5 SIZE: D

OWN: TRINITY

REV: 3

SS-740

FOR INFORMATION ONLY

CASS-TL4 PLAN VIEW

CASS-TL4 ELEVATION VIEW
(TYPICAL LAY-OUT)

SECTION P-P

SECTION N-N

VIEW E-E
(CASS-TL4 POST - IN CONCRETE)
(POST OPTION #3)

VIEW F-F
(CASS-TL4 POST- DRIVEN
POST OPTION #4)

VIEW G-G
(CASS-TL4 POST- BASE-PLATED
POST OPTION #5)

VIEW H-H
(CASS-TL4 POST- DRIVEN SLEEVE
POST OPTION #6A)

VIEW J-J
(CASS-TL4 POST- DRIVEN SLEEVE - SOIL PLATE
POST OPTION #6B)

USER NAME =	thanh.vo	DESIGNED -		REVISED -	
DRAWN -		RECKED -		REVISED -	
PLOT SCALE =	990CAL3	DATE -		REVISED -	
PLOT DATE =	8/21/2025				

STATE OF ILLINOIS
DEPARTMENT OF TRANSPORTATION

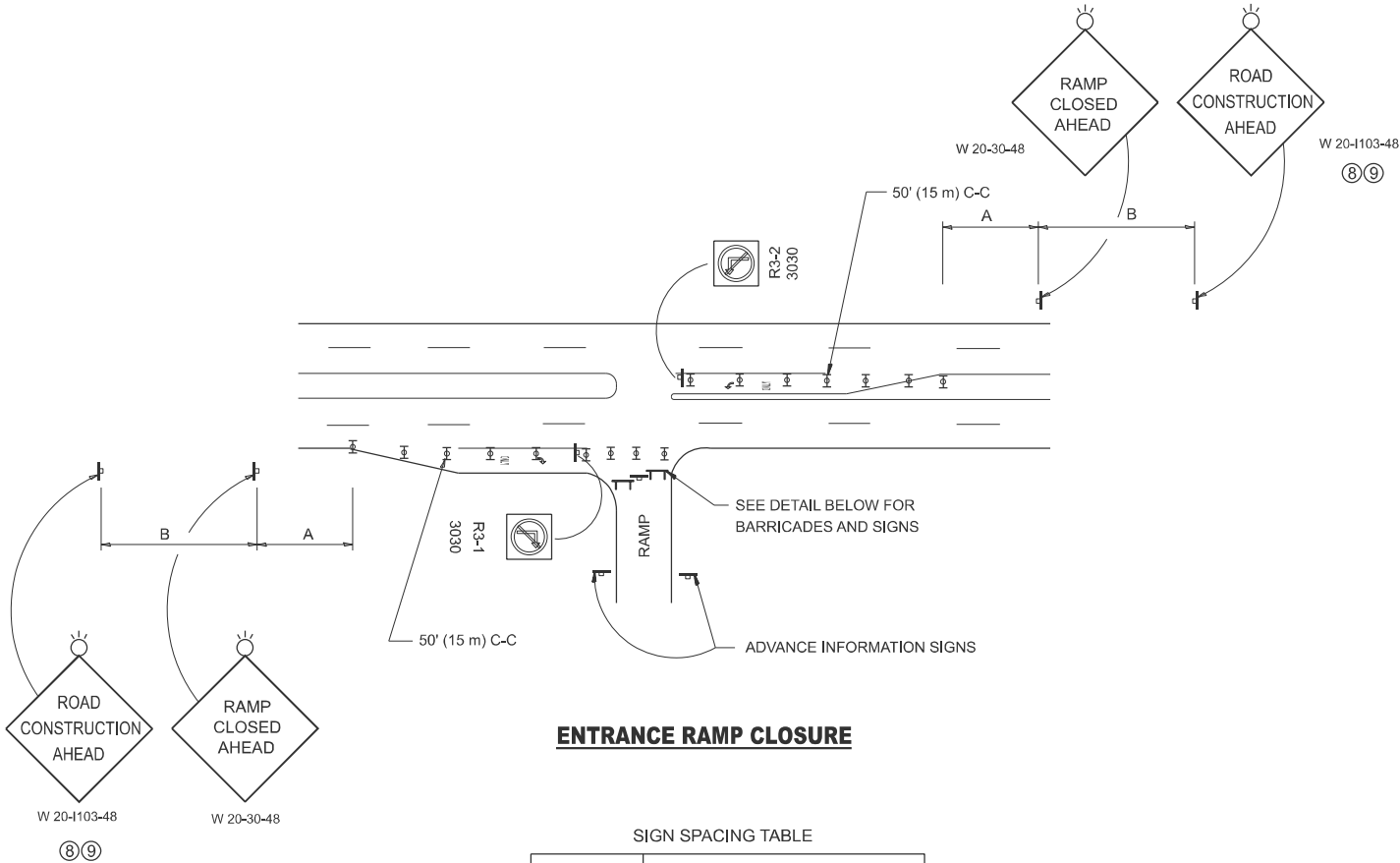
HIGH TENSION GUARDRAIL DETAILS (TRINITY)

SCALE: SHEET OF 13 SHEETS STA. TO STA.

F.A. Va	SECTION	COUNTY	TOTAL SHEETS	SHEET NO.
Various	2025-1079-I	*Various	13	8
CONTRACT NO. 62Y36				
ILLINOIS / FED. AID PROJECT				

*Cook and Will

MODEL: TC 8 (Sheet)
FILE NAME: c:\p\work\pwt\thanh.vo\illinois.gov\114502\1\1D115525-shr-Dist\Std.sldgn

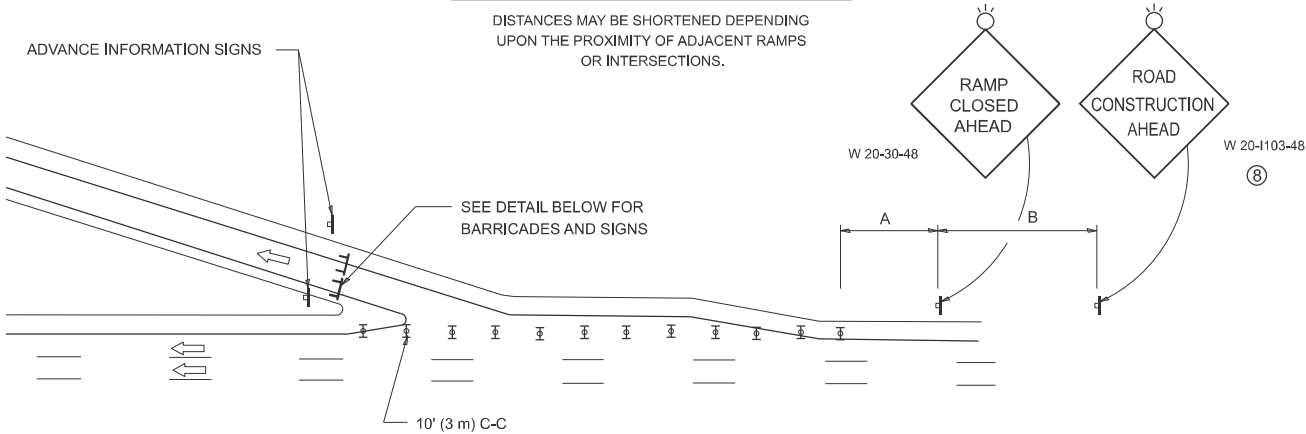


ENTRANCE RAMP CLOSURE

SIGN SPACING TABLE

FACILITY	DISTANCE BETWEEN SIGNS	
	A	B
EXPRESSWAY >24 HOURS	1000' (300 m)	1500' (450 m)
EXPRESSWAY ≤24 HOURS	500' (150 m)	500' (150 m)
ARTERIAL 55 MPH	500' (150 m)	500' (150 m)
ARTERIAL 50-45 MPH	350' (100 m)	350' (100 m)
ARTERIAL <45 MPH	200' (60 m)	200' (60 m)

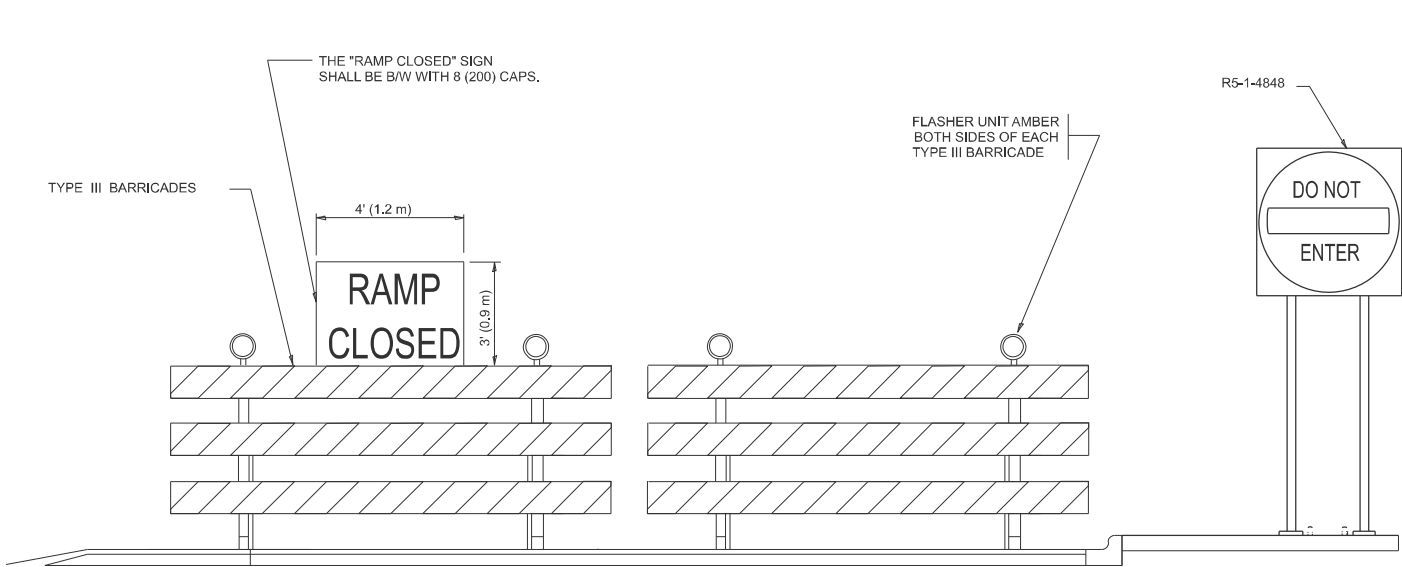
DISTANCES MAY BE SHORTENED DEPENDING
UPON THE PROXIMITY OF ADJACENT RAMPS
OR INTERSECTIONS.



EXIT RAMP CLOSURE

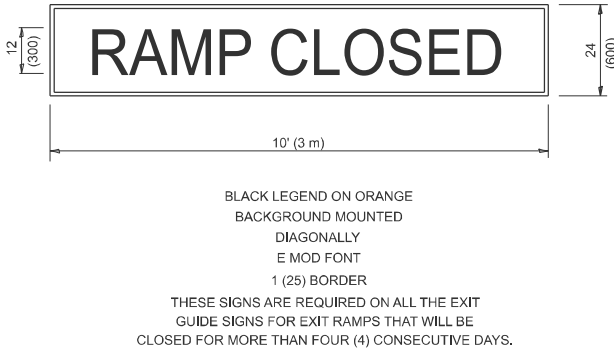
SYMBOLS

- TYPE II BARRICADE OR DRUM
- TYPE III BARRICADE WITH 2 FLASHING LIGHTS



DETAIL FOR REQUIRED BARRICADES & SIGNS

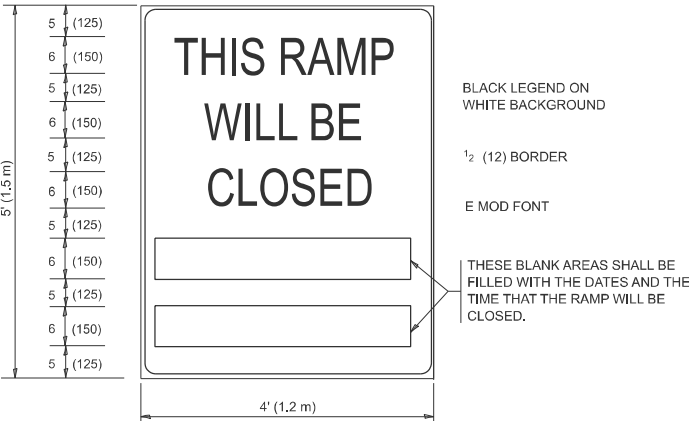
RAMP CLOSURE ADVANCE WARNING SIGN



THESE SIGNS ARE REQUIRED ON BOTH SIDES OF THE RAMP, MINIMUM OF 1 WEEK IN ADVANCE OF THE CLOSURE.

THESE SIGNS SHALL BE FABRICATED AND PAID FOR ACCORDING TO THE TEMPORARY INFORMATION SIGNING SPECIAL PROVISION

RAMP CLOSURE ADVANCE INFORMATION SIGN



GENERAL NOTES:

- CONES MAY BE SUBSTITUTED FOR DRUMS OR TYPE II BARRICADES DURING DAY OPERATIONS. CONES SHALL BE A MINIMUM OF 28 (700) HIGH.
- VERTICAL BARRICADES SHALL NOT BE USED FOR RAMP CLOSURES.
- A FLAGGER SHALL BE POSITIONED AT EACH CLOSED RAMP THAT IS OPEN TO CONSTRUCTION VEHICLES, PRECEDED BY A W20-7 FLAGGER WARNING SIGN.
- ALL ROUTE MARKERS AND TRAILBLAZER ASSEMBLIES WHICH DIRECT MOTORISTS TO A CLOSED ENTRANCE RAMP SHALL BE COVERED WHEN THE RAMP IS CLOSED FOR MORE THAN FOUR (4) DAYS.
- THE SIGNING AND BARRICADING WHICH IS REQUIRED BY THIS DETAIL SHALL BE INCLUDED IN THE COST OF TRAFFIC CONTROL AND PROTECTION (EXPRESSWAYS).
- AUTHORIZATION FROM THE DISTRICT'S BUREAU OF TRAFFIC IS REQUIRED FOR ALL RAMP CLOSURES.
- THE RAMP CLOSURE ADVANCE INFORMATION SIGNS SHALL BE ERECTED IF THE CLOSURE TIME EXCEEDS TWENTY-FOUR (24) HOURS. ADDITIONAL ADVANCE WARNING SIGNS ON EXIT GUIDE SIGNING WILL BE REQUIRED FOR EXIT RAMP CLOSURES THAT EXCEED FOUR (4) DAYS IN LENGTH.
- ROAD CONSTRUCTION AHEAD SIGNS MAY BE OMITTED WHEN THIS DETAIL IS USED IN CONJUNCTION WITH OTHER TRAFFIC CONTROL THAT ALREADY INCLUDES A ROAD CONSTRUCTION AHEAD SIGN.
- ARTERIAL ROAD CONSTRUCTION AHEAD SIGNS SHALL BE INSTALLED ON THE LEFT SIDE OF TRAFFIC IF THE MEDIAN IS MORE THAN 10 FT WIDE.

ALL DIMENSIONS ARE IN INCHES (MILLIMETERS)
UNLESS OTHERWISE SHOWN.

STATE OF ILLINOIS
DEPARTMENT OF TRANSPORTATION

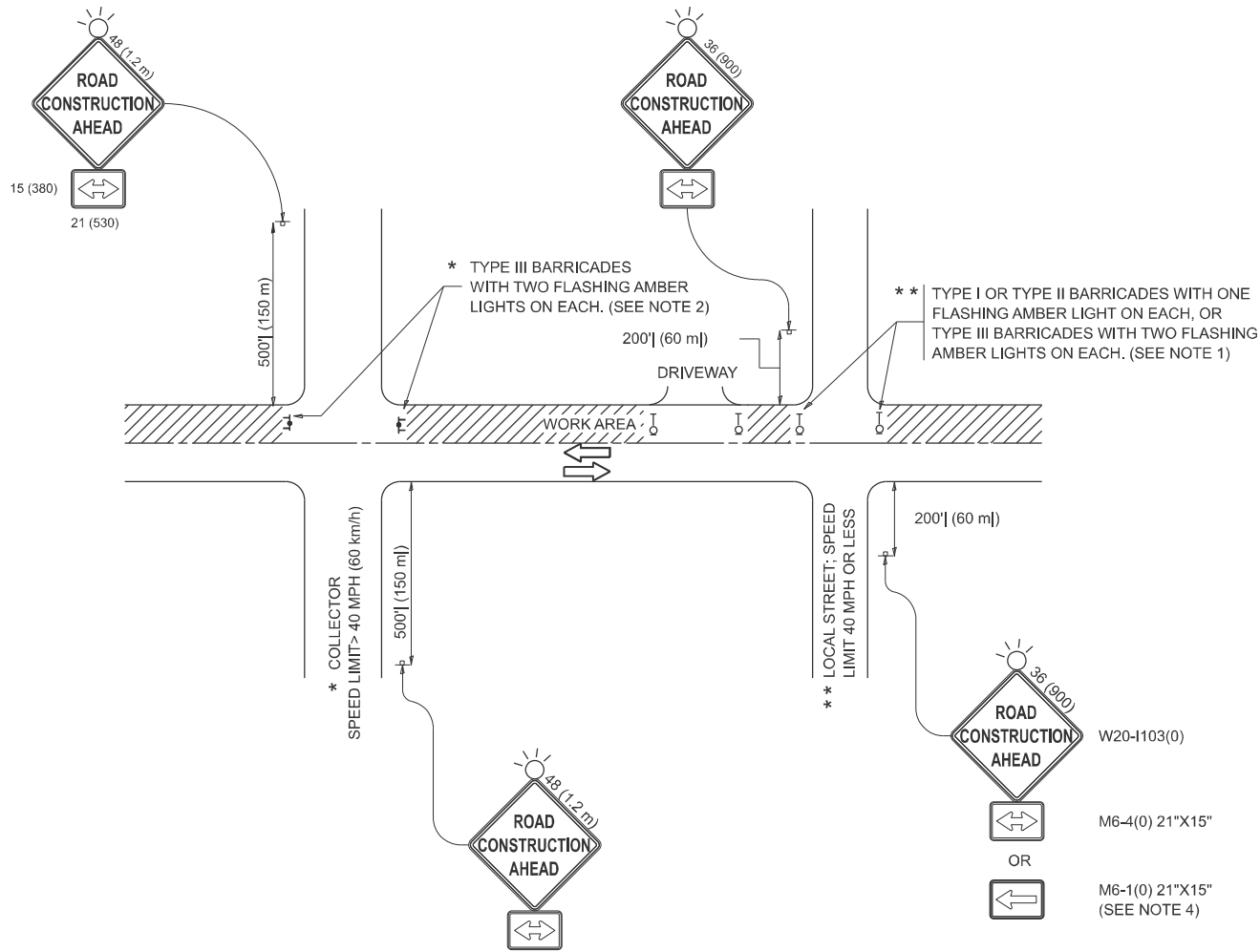
ENTRANCE AND EXIT_RAMP CLOSURE DETAILS

SCALE: NONE SHEET 1 OF 1 SHEETS STA. TO STA.

F.A. Var RTE.	SECTION	COUNTY	TOTAL SHEETS	SHEET NO.
Various	2025-1079-I	*Various	13	9
TC-08		CONTRACT NO. 62Y36		
ILLINOIS		FED. AID PROJECT		

*Cook and Will

MODEL: TC 10 [Sheet]
FILE NAME: c:\p\work\pwt\thanh.vo\illinois.gov\1145021\1D115225-81t-Dist\Stds.dgn



NOTES:

- SIDE ROAD WITH A SPEED LIMIT OF 40 MPH (60 km/h) OR LESS AS SHOWN ON THE DRAWING AND AS DIRECTED BY THE ENGINEER:
 - ONE "ROAD CONSTRUCTION AHEAD" SIGN 36 x 36 (900x900) WITH A FLASHER MOUNTED ON IT APPROXIMATELY 200' (60 m) IN ADVANCE OF THE MAIN ROUTE.
 - THE CLOSED PORTION OF THE MAIN ROUTE SHALL BE PROTECTED BY BLOCKING WITH TYPE I, TYPE II OR TYPE III BARRICADES, 1/3 OF THE CROSS SECTION OF THE CLOSED PORTION.
- SIDE ROAD WITH A SPEED LIMIT GREATER THAN 40 MPH (60 km/h) AS SHOWN ON THE DRAWING AND AS DIRECTED BY THE ENGINEER:
 - ONE "ROAD CONSTRUCTION AHEAD" SIGN 48 x 48 (1.2 m x 1.2 m) WITH A FLASHER MOUNTED ON IT APPROXIMATELY 500' (150 m) IN ADVANCE OF THE MAIN ROUTE.
 - THE CLOSED PORTION OF THE MAIN ROUTE SHALL BE PROTECTED BY BLOCKING WITH TYPE III BARRICADES, 1/2 OF THE CROSS SECTION OF THE CLOSED PORTION.
- CONES MAY BE SUBSTITUTED FOR BARRICADES OR DRUMS AT HALF THE SPACING DURING DAY OPERATIONS. CONES SHALL BE A MINIMUM OF 28 (710) IN HEIGHT.
- WHEN THE SIDE ROAD LIES BETWEEN THE BEGINNING OF THE MAINLINE SIGNING AND THE WORK ZONE, A SINGLE HEADED ARROW (M6-1) SHALL BE USED IN LIEU OF THE DOUBLE HEADED ARROW (M6-4).
- WHEN WORK IS BEING PERFORMED ON A SIDE ROAD OR DRIVEWAY, FOLLOW THE APPLICABLE STANDARD(S). THE DIRECTIONAL ARROW (M6-1 OR M6-4) SHALL BE COVERED OR REMOVED WHEN NO LONGER CONSISTENT WITH THE TRAFFIC CONTROL SET-UP.
- ADVANCE WARNING SIGNS ARE TO BE OMITTED ON DRIVEWAYS UNLESS OTHERWISE SPECIFIED IN THE PLANS OR BY THE ENGINEER.
- THE TRAFFIC CONTROL AND PROTECTION FOR SIDE ROADS, INTERSECTIONS, AND DRIVEWAYS SHALL BE INCLUDED IN THE COST OF SPECIFIED TRAFFIC CONTROL STANDARDS OR ITEMS.

All dimensions are in inches (millimeters) unless otherwise shown.

STATE OF ILLINOIS
DEPARTMENT OF TRANSPORTATION

TRAFFIC CONTROL AND PROTECTION FOR
SIDE ROADS, INTERSECTIONS, AND DRIVEWAYS

SCALE: SHEET OF SHEETS STA. TO STA.

F.A. Var RTE.	SECTION	COUNTY	TOTAL SHEETS	SHEET NO.
Various	2025-1079-I	*Various	13	10
TC-10		CONTRACT NO. 62Y36		
		ILLINOIS FED. AID PROJECT		

*Cook and Will

TURN BAY ENTRANCE AT START
OF LANE CLOSURE TAPER

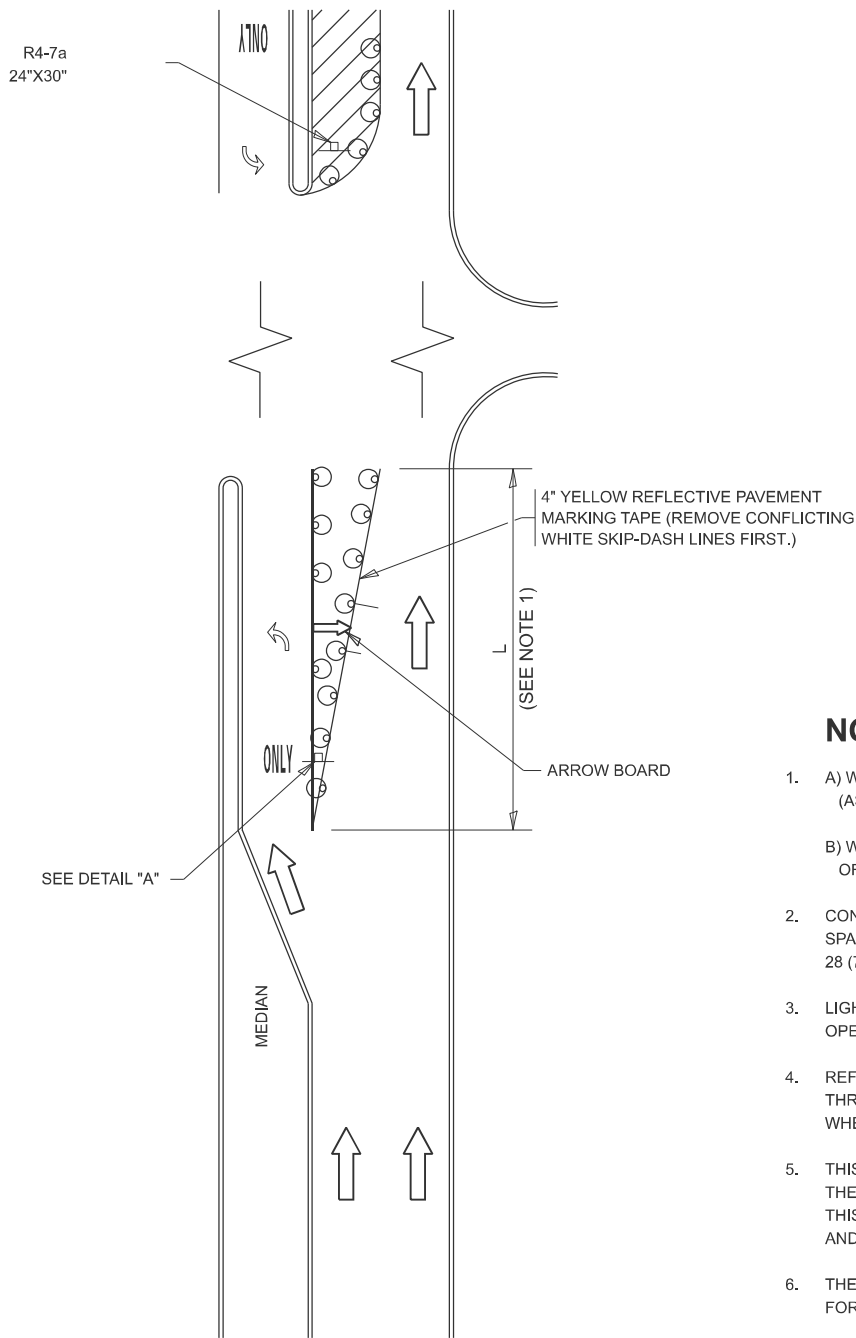
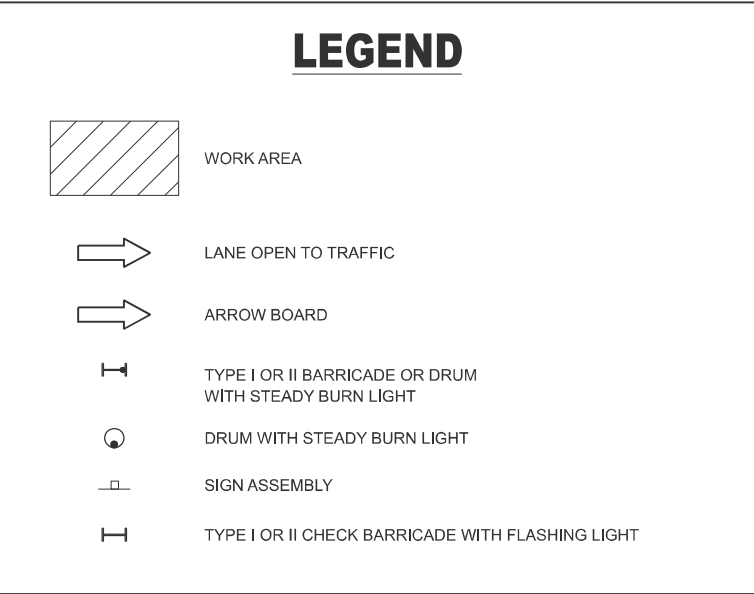


FIGURE 1

LEGEND



NOTES:

- A) WHEN "L" IS \leq THE STORAGE LENGTH OF THE TURN LANE (AS SHOWN IN FIG. 1), USE FIGURE 1.
B) WHEN "L" IS $>$ THE STORAGE LENGTH OF THE TURN LANE OR THE TURN LANE IS WITHIN THE LANE CLOSURE, USE FIGURE 2.
- CONES MAY BE SUBSTITUTED FOR BARRICADES OR DRUMS AT HALF THE SPACING DURING DAY OPERATIONS. CONES SHALL BE A MINIMUM OF 28 (710) IN HEIGHT.
- LIGHTS WILL NOT BE REQUIRED ON BARRICADES OR DRUMS FOR DAY OPERATIONS. ALL LIGHTS SHALL BE MONODIRECTIONAL.
- REFLECTIVE TEMPORARY PAVEMENT MARKINGS SHALL BE PLACED THROUGHOUT THE BARRICADED AREAS OF EACH TURN BAY AS SHOWN WHERE THE CLOSURE TIME IS GREATER THAN FOURTEEN (14) DAYS.
- THIS APPLICATION ALSO APPLIES WHEN WORK IS BEING PERFORMED IN THE RIGHT LANE(S) AND THE RIGHT TURN BAY IS TO REMAIN OPEN. UNDER THIS CONDITION, "RIGHT TURN LANE" R3-I100R 24 x 24 (600 x 600) AND M6-2R 21 x 15 (530 x 380) SHALL BE USED.
- THESE CONTROLS SHALL SUPPLEMENT MAINLINE TRAFFIC CONTROL FOR LANE CLOSURES.
- THE SIGNS SHALL BE MOUNTED ABOVE THE BARRICADES/DRUMS ON SEPARATE SIGN SUPPORTS THAT MEET NCHRP 350 OR MASH REQUIREMENTS.
- TRAFFIC CONTROL AND PROTECTION AT TURN BAYS (TO REMAIN OPEN TO TRAFFIC) SHALL BE INCLUDED IN THE COST OF SPECIFIED TRAFFIC CONTROL STANDARDS OR ITEMS.

TURN BAY ENTRANCE
WITHIN A LANE CLOSURE

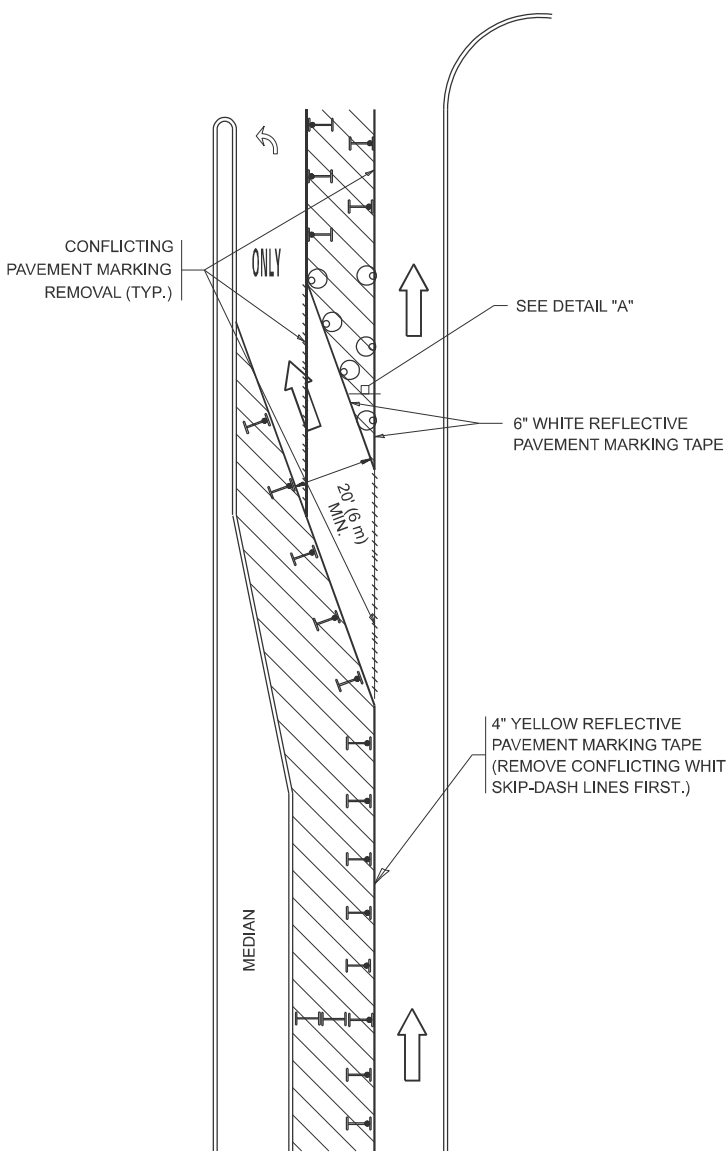
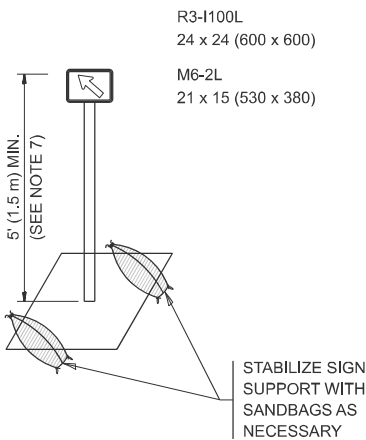


FIGURE 2



DETAIL A

All dimensions are in inches (millimeters) unless otherwise shown.

MODEL: TC 14 [Sheet]
FILE NAME: c:\p\work\pwt\thanh.vo\illinois.gov\1145021\1145025-ehp-Dist\Stds.dgn

USER NAME = thanh.vo	DESIGNED - T. RAMMACHER 09-08-94
	DRAWN - A. HOUSEH 11-07-95
PLOT SCALE = \$SCALE\$	CHECKED - A. HOUSEH 10-12-96
PLOT DATE = 8/21/2025	DATE - T. RAMMACHER 01-06-00

REVISED - R. BORO 09-14-09
REVISED - A. SCHUETZE 07-01-13
REVISED - A. SCHUETZE 09-15-16
REVISED -

STATE OF ILLINOIS
DEPARTMENT OF TRANSPORTATION

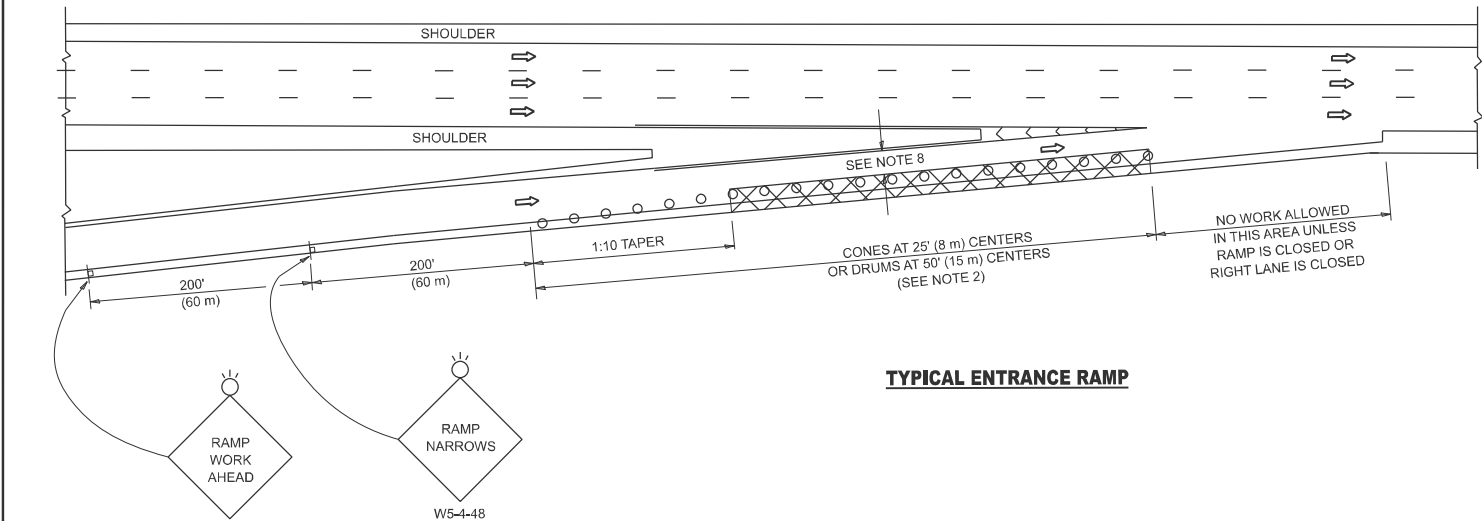
TRAFFIC CONTROL AND PROTECTION AT TURN BAYS
(TO REMAIN OPEN TO TRAFFIC)

SCALE: NONE SHEET 1 OF 1 SHEETS STA. TO STA.

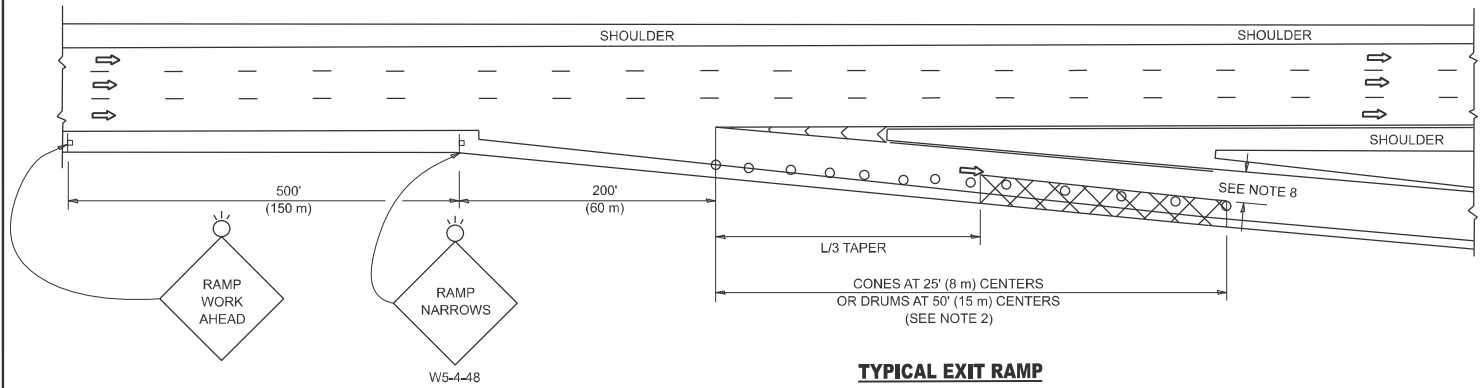
F.A. Var RTE.	SECTION	COUNTY	TOTAL SHEETS	SHEET NO.
Various	2025-1079-I	*Various	13	11
TC-14		CONTRACT NO. 62Y36		
		ILLINOIS	FED. AID PROJECT	

*Cook and Will

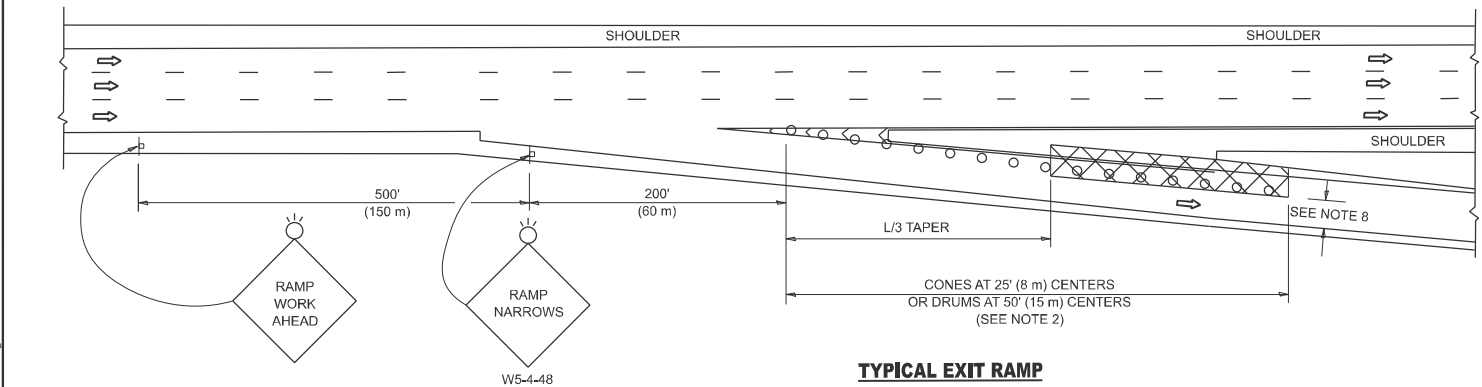
PARTIAL RAMP CLOSURE DETAILS



TYPICAL ENTRANCE RAMP



TYPICAL EXIT RAMP



TYPICAL EXIT RAMP

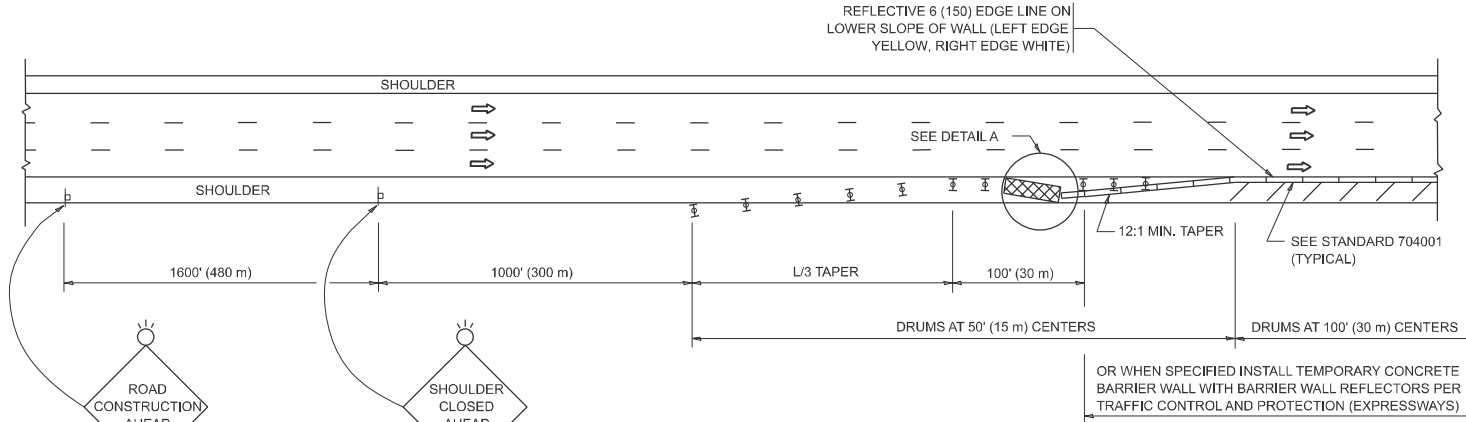
SYMBOLS

- ACTIVE WORK AREA
- SIGN ON PORTABLE OR PERMANENT SUPPORT
- FLAGGER WITH CONTROL SIGN
- TYPE II BARRICADE OR DRUM
- CONE, DRUM OR BARRICADE
- IMPACT ATTENUATOR OF TYPE AND TEST LEVEL SPECIFIED

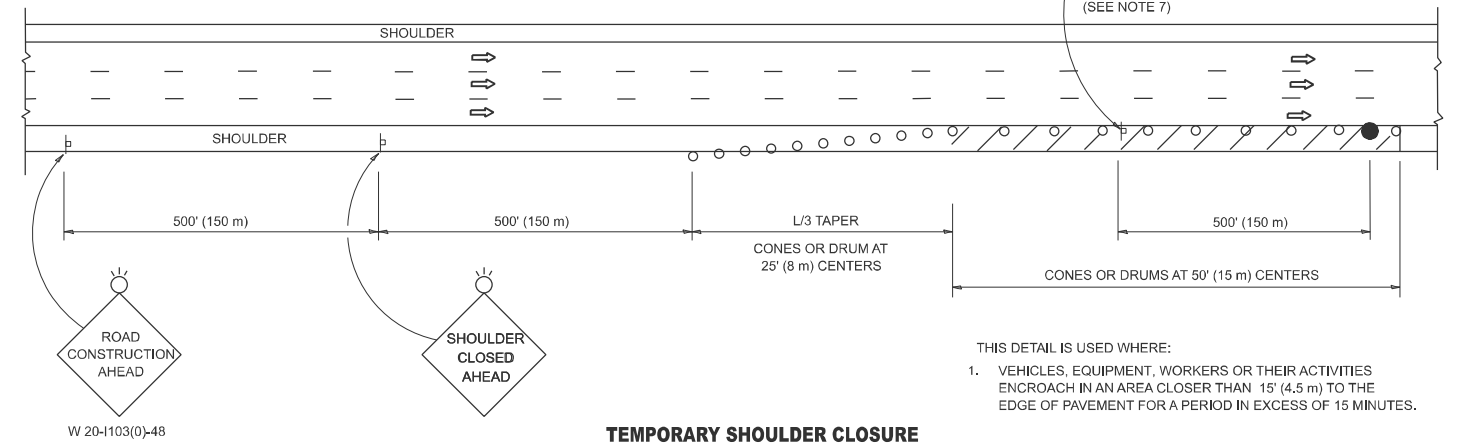
GENERAL NOTES:

- THE "L" DISTANCE EQUALS:
SPEED LIMIT FORMULAS
45 mph (80 km/h) METRIC ENGLISH
OR GREATER: $L=0.65(W)(S)$ $L=(W)(S)$
W = WIDTH OF OFFSET IN FEET (METERS)
S = NORMAL POSTED SPEED MPH (KM/H)
- TYPE II BARRICADES OR DRUMS ARE REQUIRED FOR ALL NIGHTTIME CLOSURES. TYPE II BARRICADES OR DRUMS WITH MONODIRECTIONAL STEADY BURN LIGHTS ARE REQUIRED FOR DELINEATING OBSTACLES, EXCAVATIONS, OR HAZARDS EXCEEDING 100 FT (30m) IN LENGTH AT NIGHT.
- ALL SIGNS SHALL BE POST MOUNTED IF THE CLOSURE TIME EXCEEDS FOUR DAYS.
- FLASHING LIGHTS SHALL BE USED DURING THE HOURS OF DARKNESS AND SHALL BE INSTALLED ABOVE THE FIRST TWO SETS OF SIGNS.

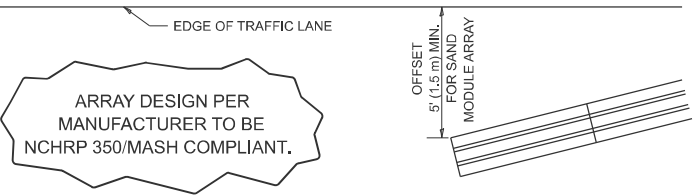
SHOULDER CLOSURE DETAILS



PERMANENT SHOULDER CLOSURE



TEMPORARY SHOULDER CLOSURE



DETAIL "A"
IMPACT ATTENUATOR, TEMPORARY
(SEE NOTE 5)

- THE IMPACT ATTENUATOR, TEMPORARY IS NOT REQUIRED WHEN THE TEMPORARY CONCRETE BARRIER WALL IS PROTECTED BY OR IS TIED INTO THE EXISTING GUARDRAIL. IF OFFSET IS LESS THAN 5 FEET USE NARROW USE TYPE DEVICE TO MEET NCHRP350/MASH.
- AUTHORIZATION FROM THE DISTRICT'S BUREAU OF TRAFFIC IS REQUIRED FOR ALL FREEWAY CLOSURES.
- THE FLAGGER AND FLAGGER SIGN ARE REQUIRED AT THE ABOVE WORK SITES WHEN:
a. FOUR OR MORE WORK VEHICLES ENTER THE TRAFFIC LANES IN A ONE HOUR PERIOD.
b. THE WORK AVTIVITY REQUIRES FREQUENT ENCROACHMENT INTO THE LANE OPEN TO TRAFFIC.
THE FLAGGER SHALL BE STATIONED APPROXIMATELY 100' (30 m) TO 200' (60 m) IN ADVANCE OF THE WORKERS.

- 12' MIN. WIDTH TANGENT SECTION
16' MIN. WIDTH CURVE SECTION.
- TEMPORARY SHOULDER AND NON-SYSTEM INTERCHANGE PARTIAL RAMP CLOSURES ARE ALLOWED WEEKDAYS BETWEEN 9:00 A.M. AND 3:00 P.M. AND BETWEEN 7:00 P.M. AND 5:00 A.M. OR AS APPROVED BY THE EXPRESSWAY TRAFFIC OPERATIONS ENGINEER. PERMANENT SHOULDER AND PARTIAL RAMP CLOSURES WILL ONLY BE PERMITTED IF CALLED FOR IN THE PLANS OR AS APPROVED BY THE EXPRESSWAY OPERATIONS ENGINEER.

ALL DIMENSIONS ARE IN INCHES (MILLIMETERS)
UNLESS OTHERWISE SHOWN.

MODEL: TC-17 [Sheet]
FILE NAME: c:\p\work\wtk\thanh.vo\illinois.gov\1145021\1D115525-sh1c-DistStds.dgn

USER NAME = thanh.vo	DESIGNED -	REVISED - M.D. 06-13
	DRAWN - D.W.S.	REVISED - M.D. 01-18
PLOT SCALE = \$SCALE\$	CHECKED -	REVISED - M.D. 10-20
PLOT DATE = 8/21/2025	DATE - 11-96	REVISED - D.S. 05-24

STATE OF ILLINOIS
DEPARTMENT OF TRANSPORTATION

TRAFFIC CONTROL DETAILS FOR FREEWAY
SHOULDER CLOSURES AND PARTIAL RAMP CLOSURES

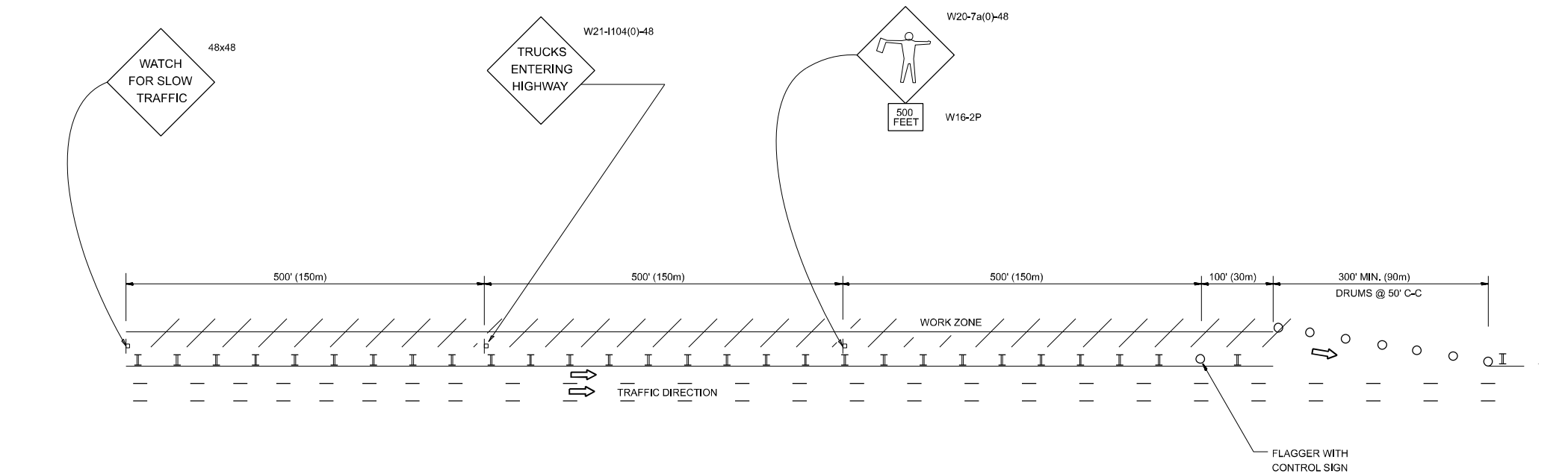
SCALE: NONE SHEET 1 OF 1 SHEETS STA. TO STA.

F.A. Var RTE.	SECTION	COUNTY	TOTAL SHEETS	SHEET NO.
Various	2025-1079-I	*Various	13	12
TC-17		CONTRACT NO. 62Y36		
ILLINOIS		FED. AID PROJECT		

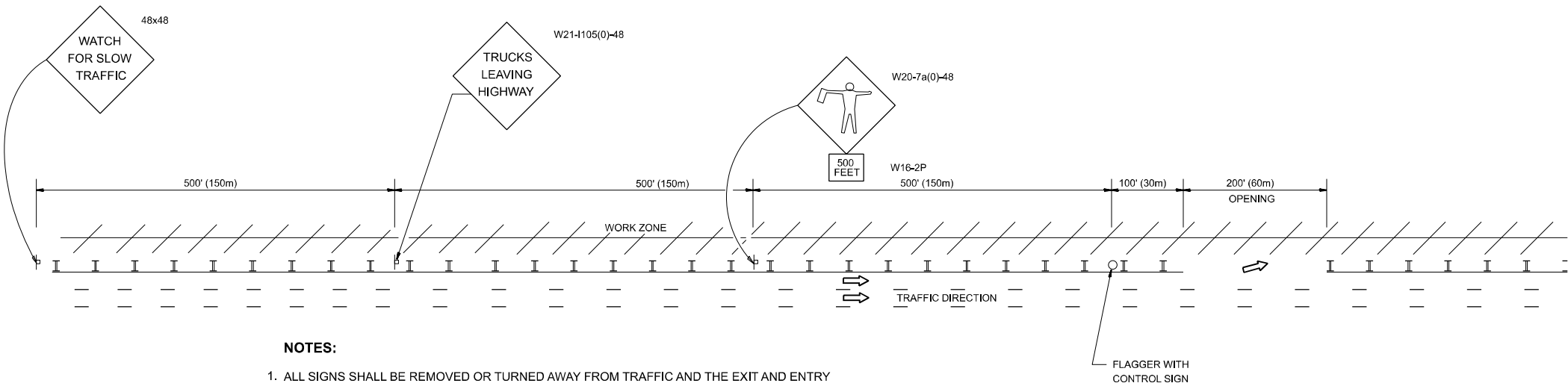
*Cook and Will

SIGNING FOR FLAGGING OPERATIONS AT WORK ZONE OPENINGS

WORK ZONE EXIT OPENING



WORK ZONE ENTRY OPENING



NOTES:

- ALL SIGNS SHALL BE REMOVED OR TURNED AWAY FROM TRAFFIC AND THE EXIT AND ENTRY OPENINGS SHALL BE CLOSED WHEN THE FLAGGING OPERATION CEASES. NON OPERATING EQUIPMENT SHALL COMPLY WITH ARTICLE 701.11
- WORK ZONE OPENINGS SHALL BE A MINIMUM OF ONE HALF MILE APART AND A MINIMUM OF ONE QUARTER MILE FROM ALL ENTRANCE AND EXIT RAMPS.
- EXITING THE WORK ZONE AT ANY PLACE OTHER THAN AT A WORK ZONE EXIT OPENING WILL BE PROHIBITED.
- ALL VEHICLES SHALL ENTER THE WORK ZONE AT ENTRY OPENINGS, USING THEIR TURN SIGNALS TO WARN MOTORISTS
- FLAGGERS SHALL NOT STOP TRAFFIC OR DIRECT TRAFFIC INTO AN ADJACENT LANE.

ALL DIMENSIONS ARE IN INCHES (MILLIMETERS)
UNLESS OTHERWISE SHOWN

MODEL: TC 21 [Sheet]
FILE NAME: c:\p\work\work\illinois.gov\jacek.ejmont@illinois.gov\d0991644\1192244nh-DistStd.dgn

	USER NAME = Jacek.Ejmont	DESIGNED -	REVISED - J.A.F. 02-06	STATE OF ILLINOIS DEPARTMENT OF TRANSPORTATION	FREEWAY / EXPRESSWAY SIGNING FOR FLAGGING OPERATIONS AT WORK ZONE OPENINGS ON FREEWAYS / EXPRESSWAYS			F.A.* RTE.	SECTION	COUNTY	TOTAL SHEETS	SHEET NO.
		DRAWN -	REVISED - S.P.B. 01-07					VAR	2024-962-HTCB, R	VARIOUS	13	13
	PLOT SCALE = 0.16666633 "/ in.	CHECKED -	REVISED - S.P.B. 12-09					TC-18		CONTRACT NO. 62W85		
	PLOT DATE = 4/3/2024	DATE -	REVISED - M.D.06-13					ILLINOIS FED. AID PROJECT				
					SCALE: NONE	SHEET 1	OF 1	SHEETS	STA.	TO STA.		