

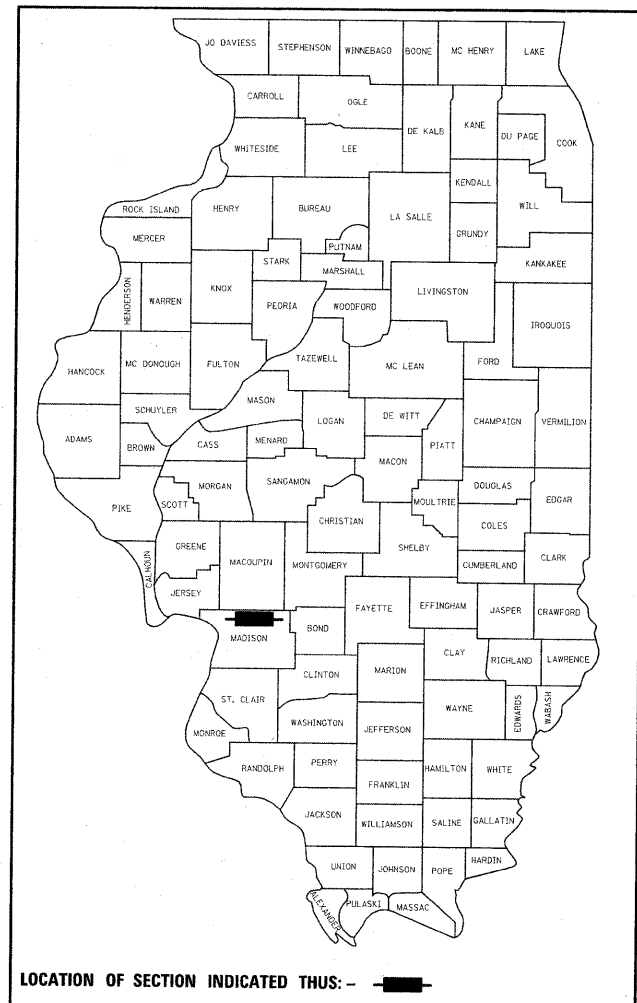
STATE OF ILLINOIS  
 DEPARTMENT OF TRANSPORTATION  
 DIVISION OF HIGHWAYS

**PROPOSED  
 HIGHWAY PLANS**

FAI ROUTE 55  
 SECTION 60-(2,3)I  
 PROJECT: *HSIP-055-1(080)030*  
 MADISON COUNTY  
 C-98-049-07  
 HIGH TENSION CABLE MEDIAN BARRIER

F.A.I. RTE.	SECTION	COUNTY	TOTAL SHEETS	SHEET NO.
55	60-(2,3)I	MADISON	78	1
FED. ROAD DIST. NO. -		ILLINOIS	CONTRACT NO. 76A76	

D-98-047-07

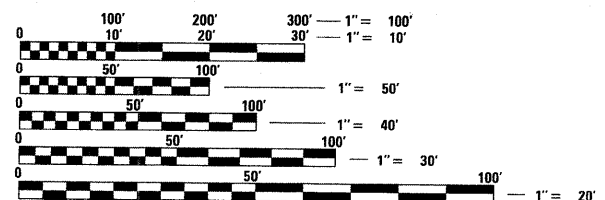


FOR INDEX OF SHEETS, SEE SHEET NO. 2

**STANDARDS**

- 000001-05
- 701101-01
- 701400-02
- 701401-04

- 701426-02
- 701901

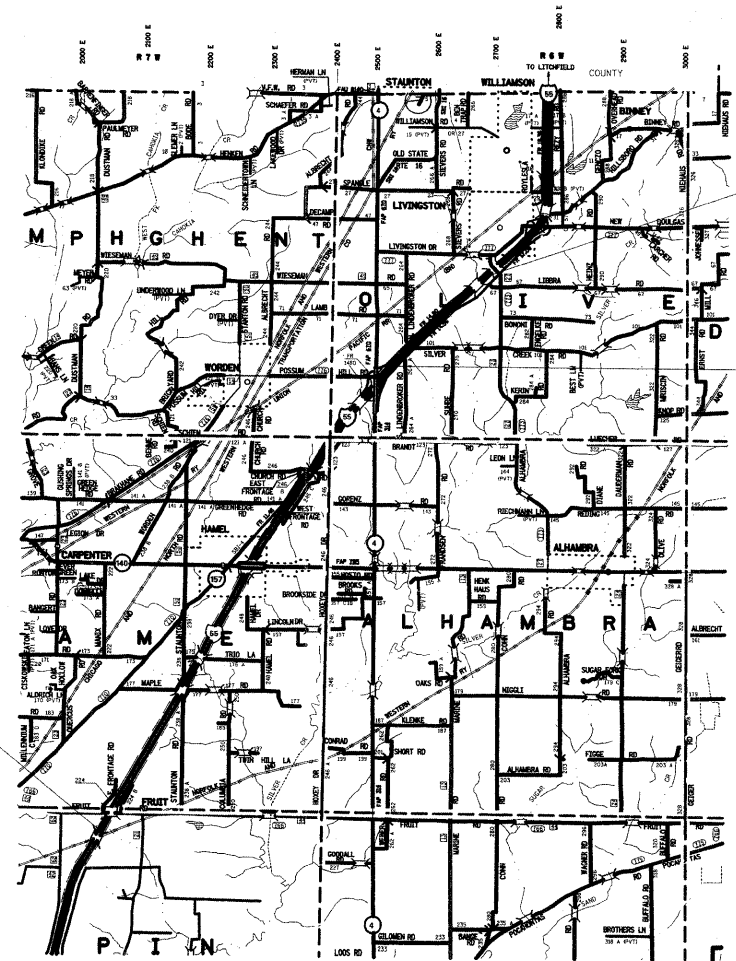


FULL SIZE PLANS HAVE BEEN PREPARED USING STANDARD ENGINEERING SCALES. REDUCED SIZED PLANS WILL NOT CONFORM TO STANDARD SCALES. IN MAKING MEASUREMENTS ON REDUCED PLANS, THE ABOVE SCALES MAY BE USED.

J.U.L.I.E.  
 JOINT UTILITY LOCATION INFORMATION FOR EXCAVATION  
 1-800-892-0123  
 OR 811

PROJECT ENGINEER: PATTI LEBEAU 618-346-3179  
 PROJECT MANAGER: CHERYL KEPLAR 618-346-3186

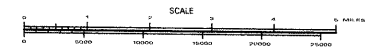
CONTRACT NO. 76A76



BEGIN PROJECT  
 STA. 1001 + 65  
 LAT = 38.82561  
 LONG = 89.88267

END PROJECT  
 STA. 509 + 00  
 LAT = 38.95707  
 LONG = 89.76741

STATION EQUATION  
 STA. 537 + 09.72 BK =  
 STA. 535 + 85.97 AH



GROSS LENGTH = 49265 FT. = 9.33 MILES  
 NET LENGTH = 49265 FT. = 9.33 MILES

STATE OF ILLINOIS  
 DEPARTMENT OF TRANSPORTATION  
 DIVISION OF HIGHWAYS

SUBMITTED *August 11 20 08*

*May C. Jamel*  
 DEPUTY DIRECTOR OF HIGHWAYS, REGION ENGINEER

*October 3, 20 08*  
*Eric E. Horn*  
 INTERIM ENGINEER OF DESIGN AND ENVIRONMENT

*October 3, 20 08*  
*Christine M. Reed*  
 DIRECTOR OF HIGHWAYS, CHIEF ENGINEER

**PRINTED BY THE AUTHORITY  
 OF THE STATE OF ILLINOIS**

*Rev.*