

STATE OF ILLINOIS
DEPARTMENT OF TRANSPORTATION
DIVISION OF HIGHWAYS

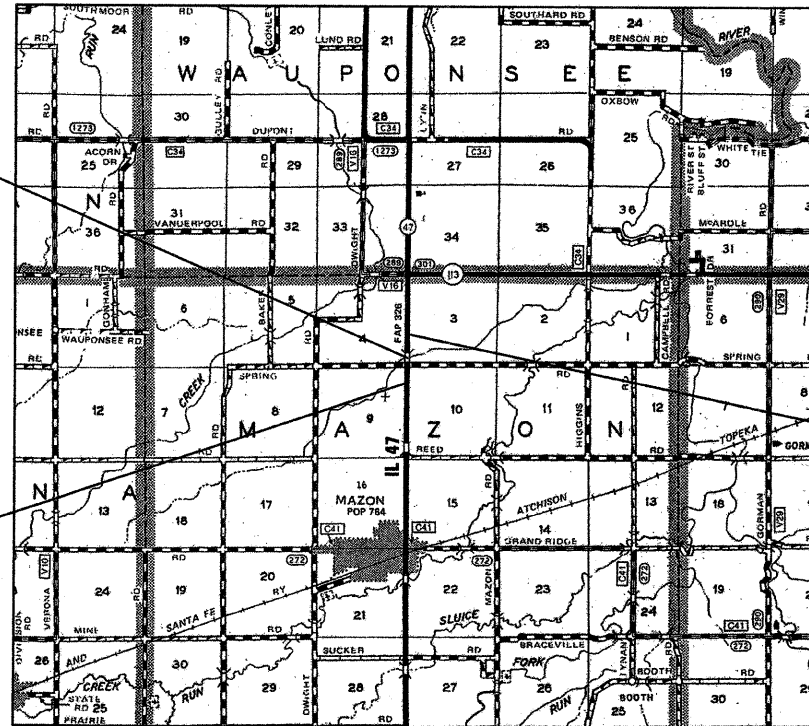
**PROPOSED
HIGHWAY PLANS**

FAP ROUTE 326 (IL ROUTE 47)
SECTION 118 BR
PROJECT ACBRF-0326(075)
GRUNDY COUNTY

C - 93 - 010 - 07

IL ROUTE 47 OVER UNNAMED DRAINAGE DITCH
REPLACEMENT OF EXISTING BRIDGE WITH A TRIPLE CAST IN PLACE
BOX CULVERT AND RAISING THE PROFILE GRADE OF THE ROADWAY.

R7E

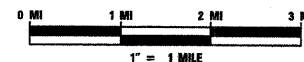


STATION 705+91.00
TRIPLE 12'x8' CAST IN PLACE
CONCRETE BOX CULVERT
EXIST. S.N. 032-0072
PROP. S.N. 032-2009

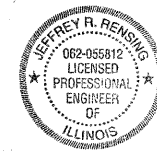
BEGIN PROJECT
STA. 701+34.00

END PROJECT
STA. 710+37.00

LOCATION MAP



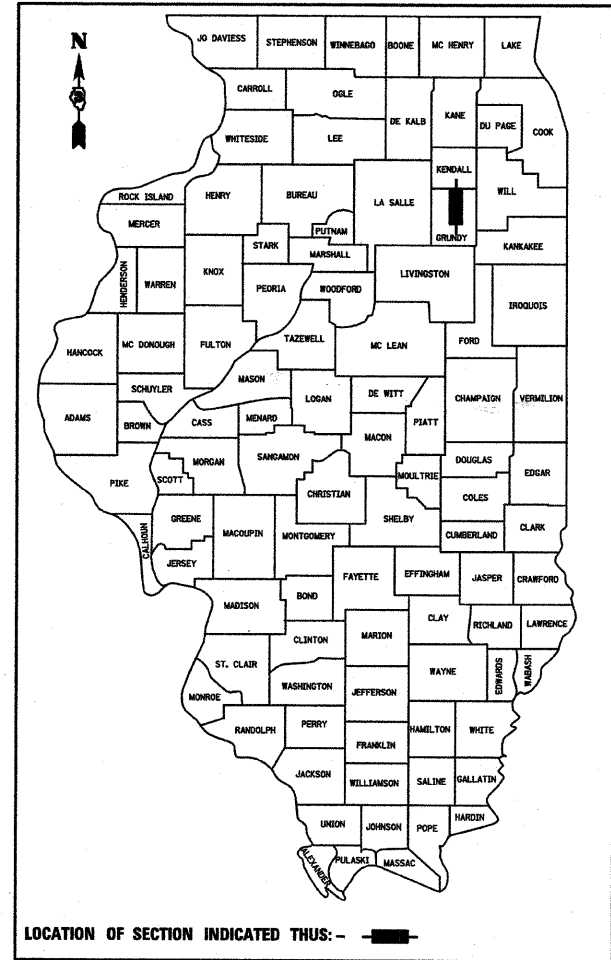
GROSS LENGTH = 903 FT. = 0.17 MI.
NET LENGTH = 903 FT. = 0.17 MI.



Jeffrey R. Rensing
JEFFREY R. RENISING
DATE 08/12/2008

F.A.P. RTE.	SECTION	COUNTY	TOTAL SHEETS	SHEET NO.
326	118 BR	GRUNDY	35	1
FED. ROAD DIST. NO.	ILLINOIS	CONTRACT NO. 66689		

D-93-047-06
P-93-069-02



LOCATION OF SECTION INDICATED THUS: —■—

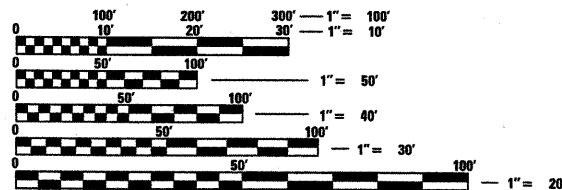
FUNCTIONAL CLASSIFICATION

OTHER PRINCIPAL ARTERIAL - F.A.P. 326 (IL RTE. 47)
ADT 8,000 (2008)
PV = 86.0%
SU = 6.0%
MU = 8.0%

INDEX OF SHEETS

SHEET NO.	ITEM
1	COVER SHEET
2	GENERAL NOTES, COMMITMENTS & HIGHWAY STANDARDS
3	SUMMARY OF QUANTITIES
4	TYPICAL SECTIONS
5	SCHEDULE OF QUANTITIES
6-7	PLAN & PROFILE SHEETS
8-13	STAGE CONSTRUCTION & TRAFFIC CONTROL
14	EROSION CONTROL & PAVEMENT MARKING PLANS
15	ROW PLANS
16-21	CULVERT PLANS & STRUCTURE BORINGS
22-28	EXISTING STRUCTURE PLANS
29-30	MISCELLANEOUS DETAILS
31-35	CROSS SECTIONS

MICROFILMED _____
REEL NUMBER _____
AWARDED _____
RESIDENT ENGINEER _____
AS BUILT CHANGES WERE MADE
ON THE FOLLOWING SHEETS _____



FULL SIZE PLANS HAVE BEEN PREPARED USING STANDARD
ENGINEERING SCALES. REDUCED SIZED PLANS WILL NOT
CONFORM TO STANDARD SCALES. IN MAKING MEASUREMENTS
ON REDUCED PLANS, THE ABOVE SCALES MAY BE USED.

J.U.L.I.E.
JOINT UTILITY LOCATION INFORMATION FOR EXCAVATION
1-800-892-0123
OR 811

DISTRICT 3 NO. (815) 434-6131
PROJECT ENGINEER: DAVE BROVIK
PROJECT MANAGER: SCOTT FERGUSON
CONTRACT NO. 66689



STATE OF ILLINOIS
DEPARTMENT OF TRANSPORTATION
DIVISION OF HIGHWAYS
SUBMITTED 08/14/2008
Henry F. Ryan
DEPUTY DIRECTOR OF HIGHWAYS, REGION ENGINEER
October 3, 2008
Eric E. Horn
ENGINEER OF DESIGN AND ENVIRONMENT
October 3, 2008
Christine M. Reed
DIRECTOR OF HIGHWAYS, CHIEF ENGINEER

**PRINTED BY THE AUTHORITY
OF THE STATE OF ILLINOIS**