

STATE OF ILLINOIS
DEPARTMENT OF TRANSPORTATION

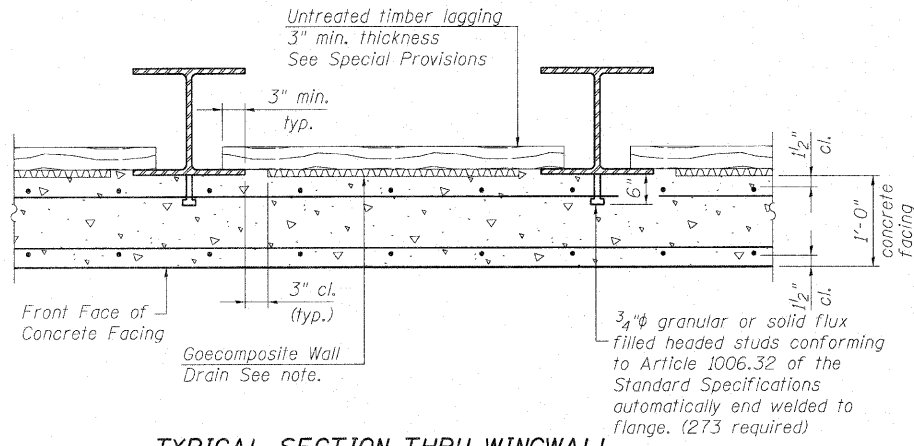
ROUTE NO.	SECTION	COUNTY	TOTAL SHEETS	SHEET NO.	SHEET NO.
F.A.P. 607	129BR	KENDALL	61	27	16 SHEETS
FED. ROAD DIST. NO.	ILLINOIS	FED. AID PROJECT			

Contract #66667

Operator: \$USER\$

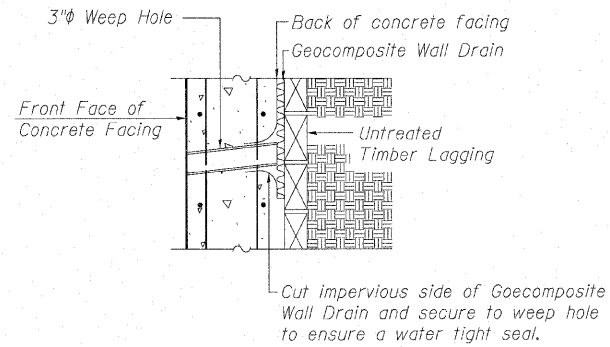
Date: 10/30/2007

Filename: \$FILES



TYPICAL SECTION THRU WINGWALL

Note:
Geocomposite Wall Drain shall not have a thickness greater than 3/8".



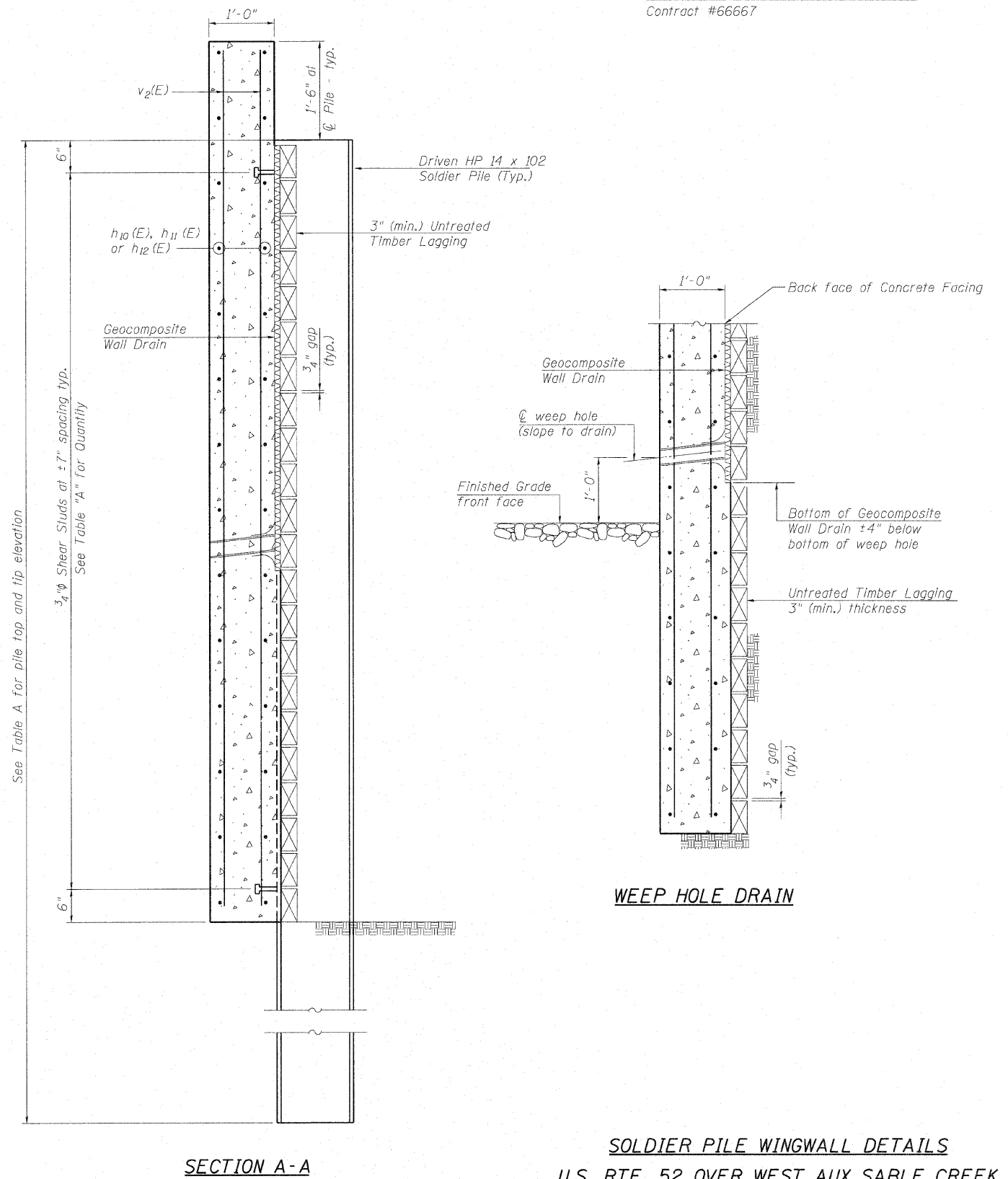
WEEP HOLE DRAIN DETAIL

Cost of the weep hole drain and the connection to the geocomposite wall drain are included with Concrete Structures.

Pile #	S.W. and N.E. Wingwall Soldier Piles				S.E. Wingwall Soldier Piles				N.W. Wingwall Soldier Piles			
	Top Elev.	Tip Elev.	*Length (ft.)	# Studs /Pile	Top Elev.	Tip Elev.	*Length (ft.)	# Studs /Pile	Top Elev.	Tip Elev.	*Length (ft.)	# Studs /Pile
1	594.6	562.7	32.0	20	594.8	563.1	32.0	19	594.5	562.7	32.0	20
2	593.9	562.7	31.5	19	593.3	563.1	30.5	17	594.1	562.7	31.5	19
3	593.2	562.7	30.5	18	591.8	563.1	29.0	15	593.7	562.7	31.0	18
4	592.5	562.7	30.0	17	-	-	-	-	593.3	562.7	30.5	17

TABLE A

* The length of HP14x102 have been rounded to the nearest 6".



WEEP HOLE DRAIN

SECTION A-A

SOLDIER PILE WINGWALL DETAILS
U.S. RTE. 52 OVER WEST AUX SABLE CREEK
F.A.P. 607 - SECTION 129BR
KENDALL COUNTY
STATION 108+07
STRUCTURE NO. 047-2019

DESIGNED	S.D.S.
CHECKED	C.W.C.
DRAWN	D.L.H.
CHECKED	S.D.S./C.W.C.

WHKS & CO.

ENGINEERS PLANNERS LAND SURVEYORS

MASON CITY, IOWA DUBUQUE, IOWA AMES, IOWA
E. DUBUQUE, ILLINOIS SPRINGFIELD, ILLINOIS ROCHESTER, MINNESOTA