

STATE OF ILLINOIS
DEPARTMENT OF TRANSPORTATION

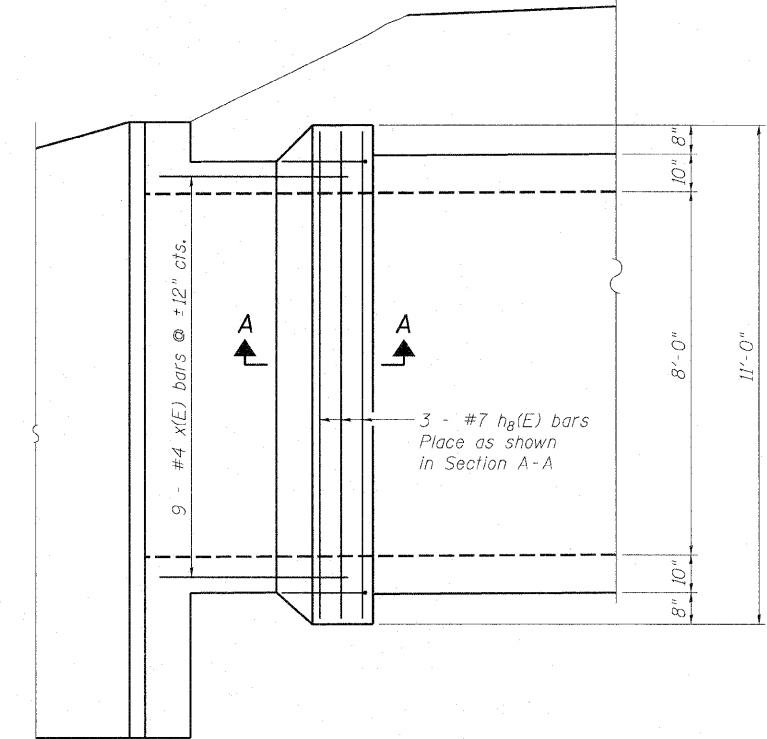
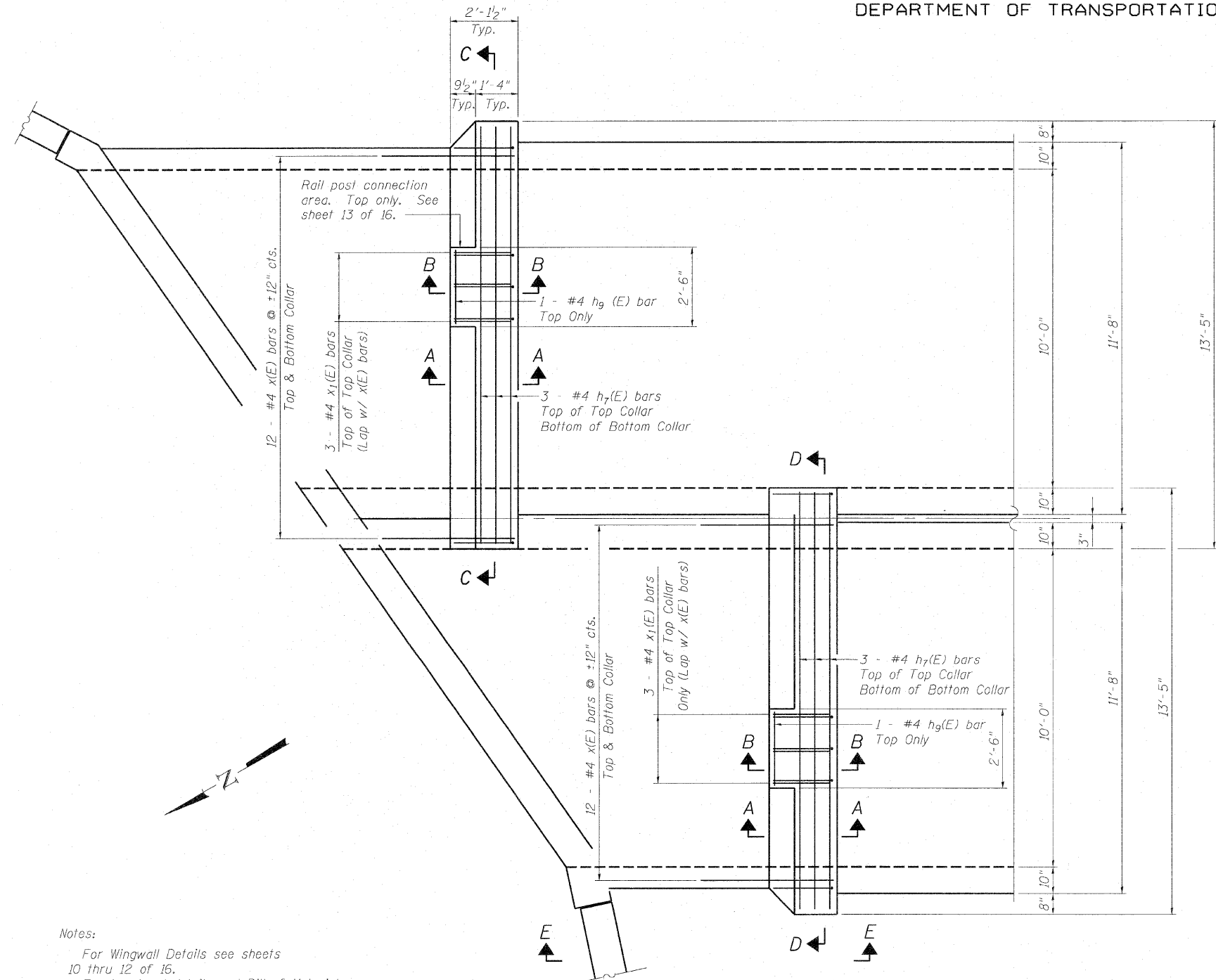
ROUTE NO.	SECTION	COUNTY	TOTAL SHEETS	SHEET NO.
F.A.P. 607	I29BR	KENDALL	61	24
FED. ROAD DIST. NO.	ILLINOIS	FED. AID PROJECT		

SHEET NO. 9
16 SHEETS

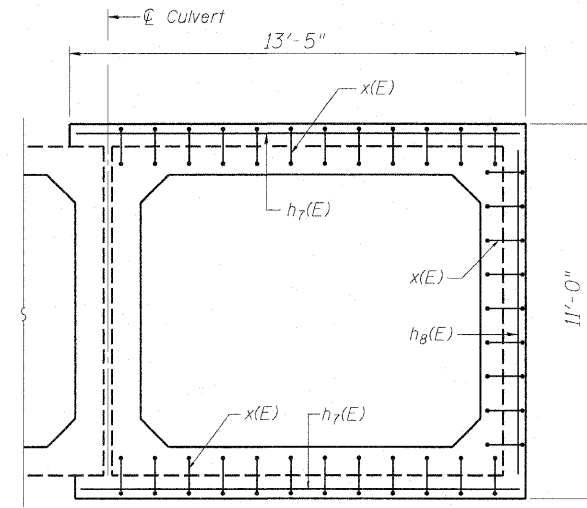
Contract #66667

Operator: \$USER\$

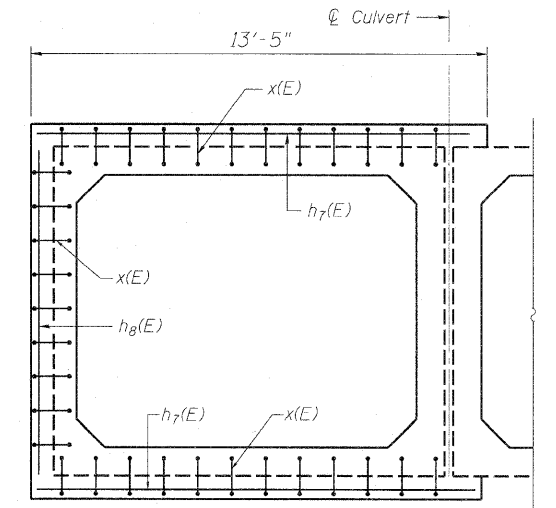
Date: 10/30/2007



VIEW E-E
(W. Collar Shown, East Collar Similar)



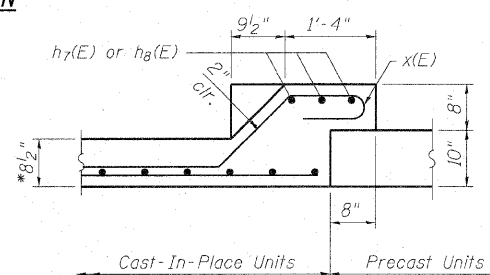
SECTION C-C



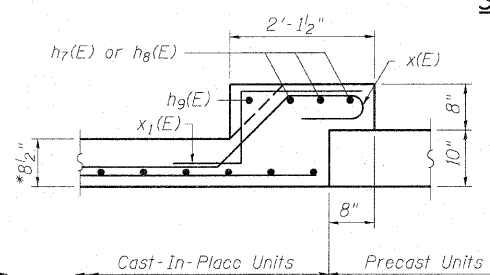
SECTION D-D

Notes:
For Wingwall Details see sheets 10 thru 12 of 16.
For bar bend details and Bill of Materials, see sheet 10 of 16.
Collar details are shown for north end. Collars at south end are similar through rotation of 180°.

PLAN



SECTION A-A



SECTION B-B

* 8" @ Walls
* 9 1/2" @ Bottom Slab

DESIGNED	S.D.S.
CHECKED	C.W.C.
DRAWN	D.L.H.
CHECKED	S.D.S./C.W.C.

WHKS & CO.
ENGINEERS PLANNERS LAND SURVEYORS
MASON CITY, IOWA DUBUQUE, IOWA AMES, IOWA
E. DUBUQUE, ILLINOIS SPRINGFIELD, ILLINOIS ROCHESTER, MINNESOTA

COLLAR PLAN & DETAILS
U.S. RTE. 52 OVER WEST AUX SABLE CREEK
F.A.P. 607 - SECTION I29BR
KENDALL COUNTY
STATION 108+07
STRUCTURE NO. 047-2019