

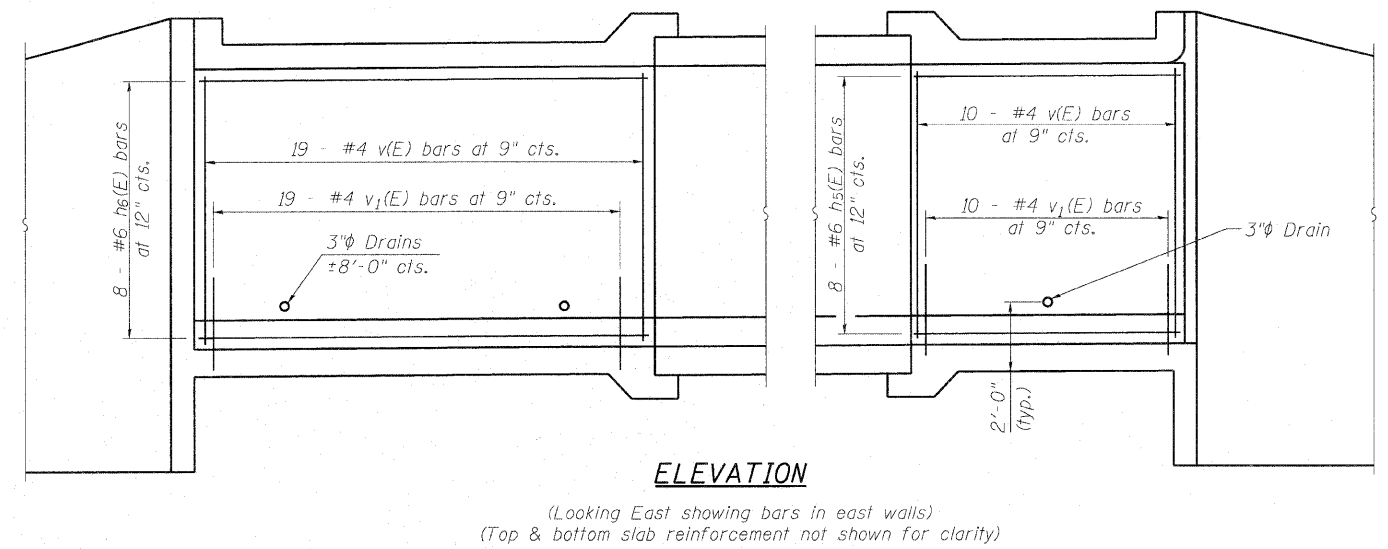
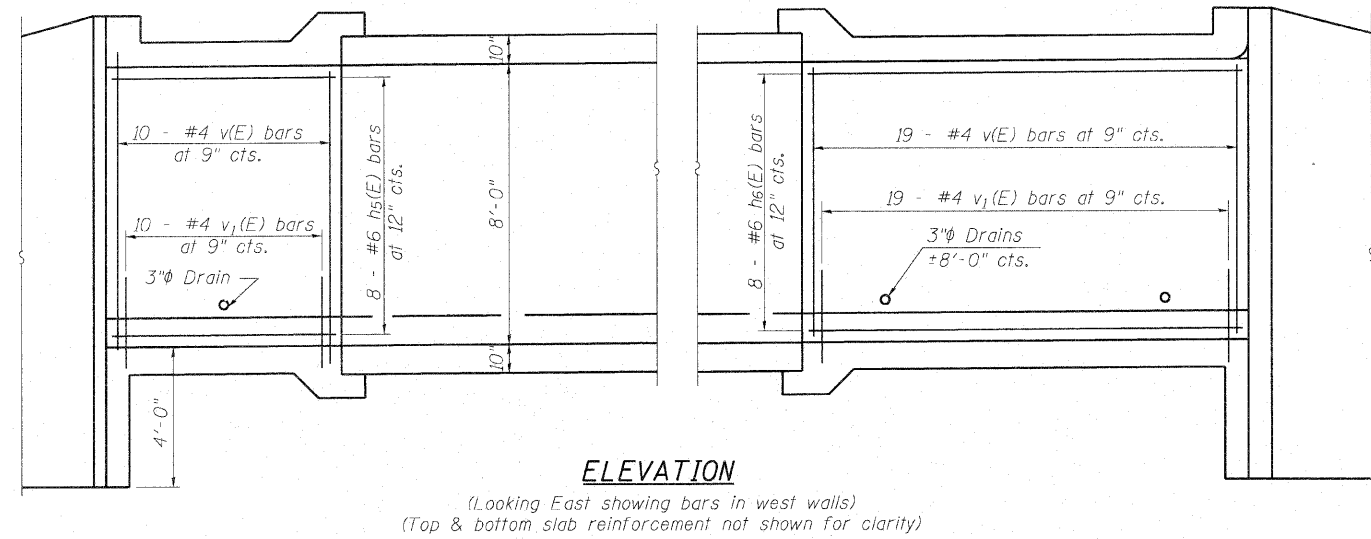
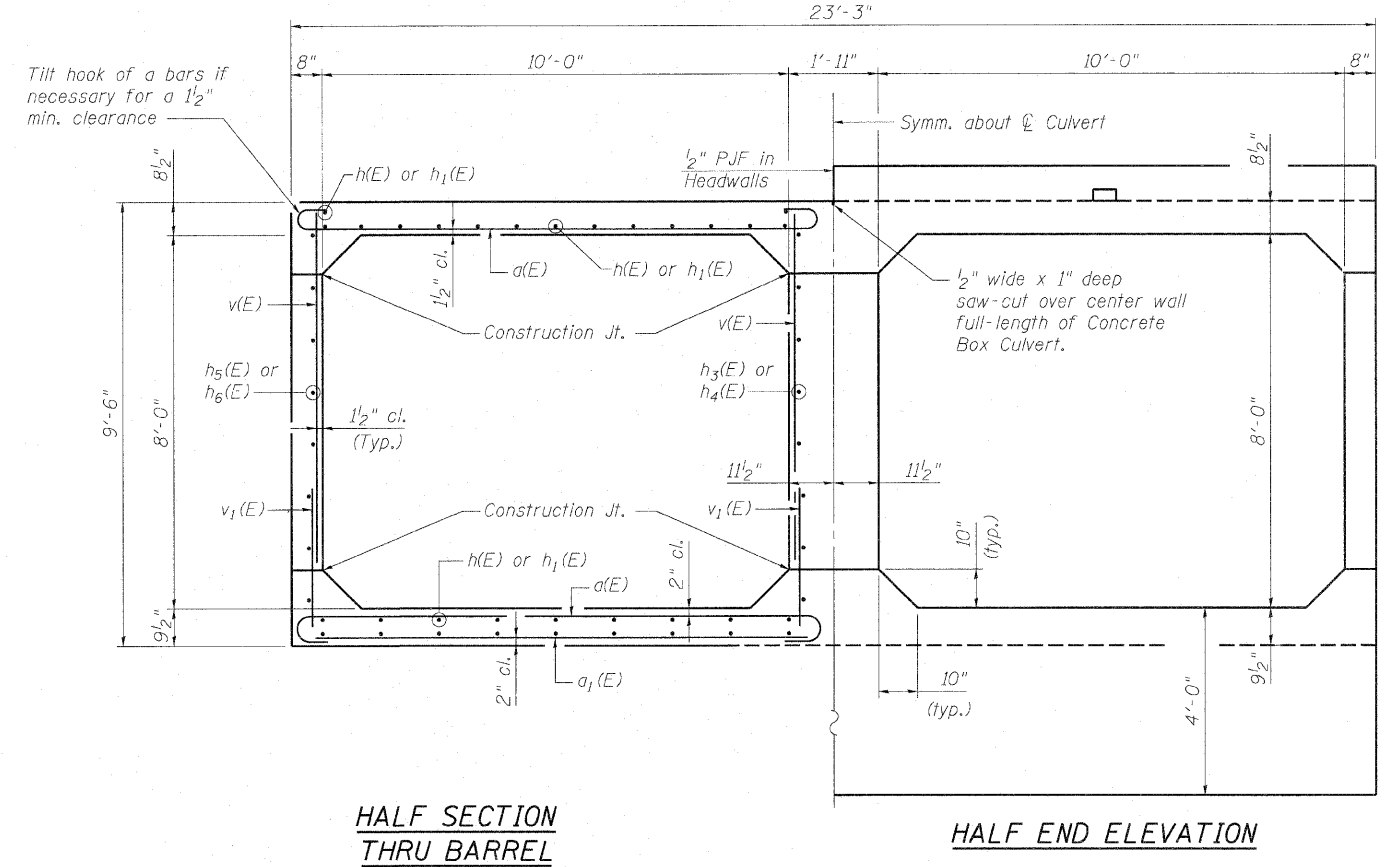
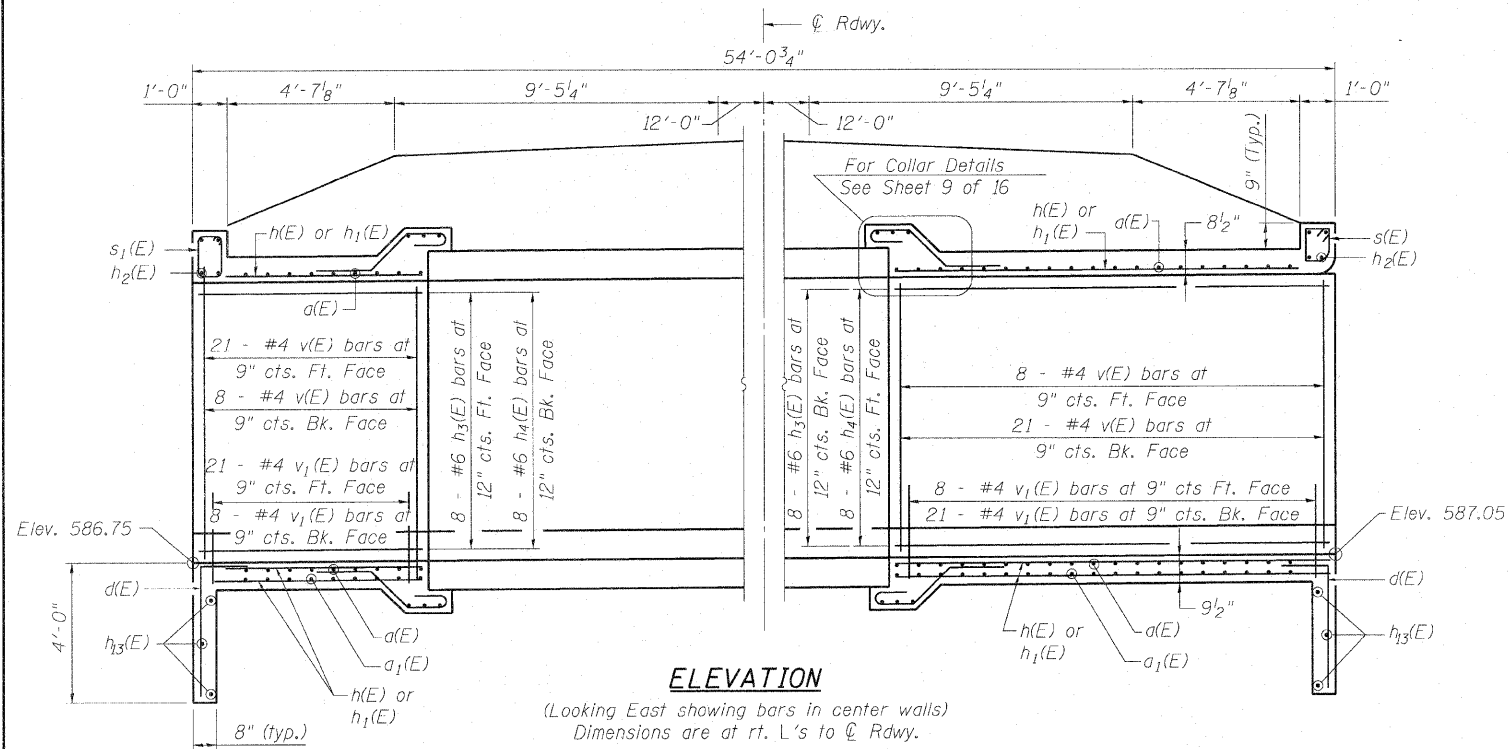
STATE OF ILLINOIS
DEPARTMENT OF TRANSPORTATION

ROUTE NO.	SECTION	COUNTY	SHEETS	SHEET	SHEET NO.
F.A.P. 607	129BR	KENDALL	61	23	16 SHEETS
FED. ROAD DIST. NO.	ILLINOIS	FED. AID PROJECT			

Contract #66667

Operator: \$USERS\$

Date: 10/30/2007



Notes:
For Collar Details see sheet 9 of 16.
For Wingwall Details see sheets 10 thru 12 of 16.
For bar bend details and Bill of Materials, see sheet 10 of 16.

BOX CULVERT END SECTION DETAILS
U.S. RTE. 52 OVER WEST AUX SABLE CREEK
F.A.P. 607 - SECTION 129BR
KENDALL COUNTY
STATION 108+07
STRUCTURE NO. 047-2019

Filename: \$FILES\$

DESIGNED	S.D.S.
CHECKED	C.W.C.
DRAWN	D.L.H.
CHECKED	S.D.S./C.W.C.

WHKS & CO.
ENGINEERS PLANNERS LAND SURVEYORS
MASON CITY, IOWA DUBUQUE, IOWA AMES, IOWA
E. DUBUQUE, ILLINOIS SPRINGFIELD, ILLINOIS ROCHESTER, MINNESOTA