

STATE OF ILLINOIS
DEPARTMENT OF TRANSPORTATION

ROUTE NO.	SECTION	COUNTY	TOTAL SHEETS	SHEET NO.	SHEET NO. 6 16 SHEETS
F.A.P. 607	129BR	KENDALL	61	21	
FED. ROAD DIST. NO.	ILLINOIS	FED. AID PROJECT-			

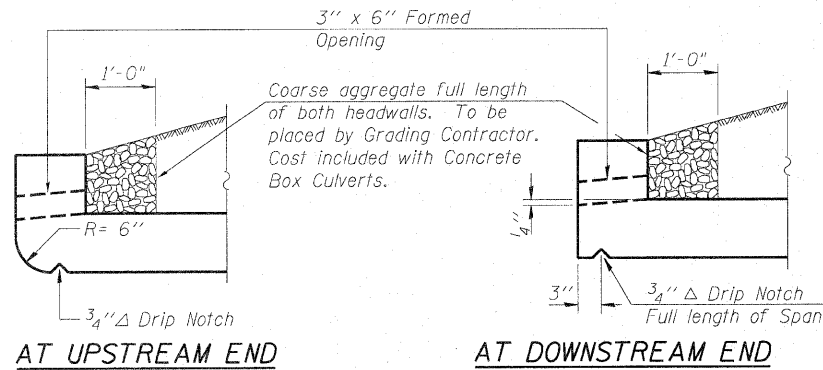
Contract #66667



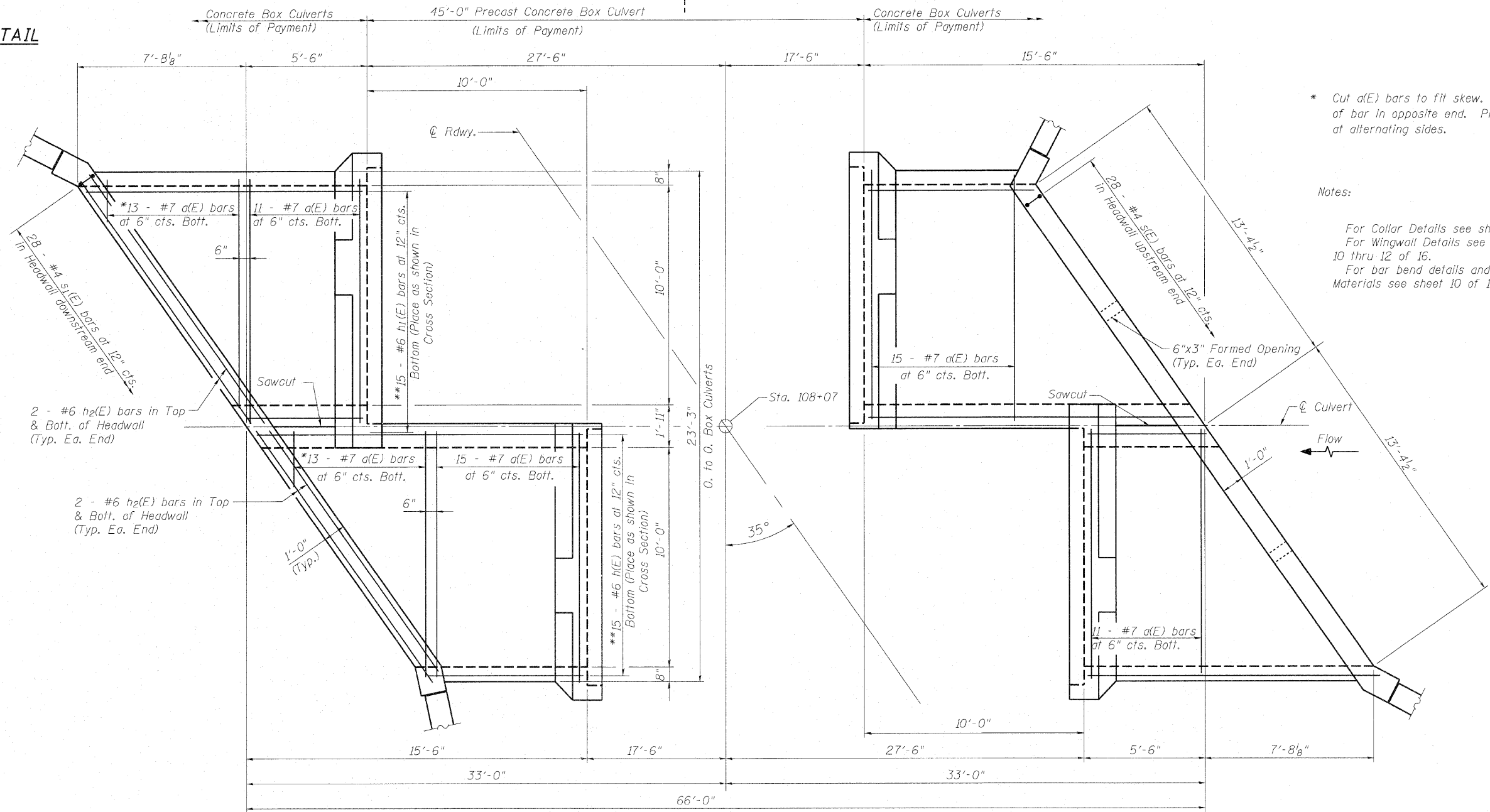
Operator: \$USERS\$

Date: 10/30/2007

Filename: \$FILES\$



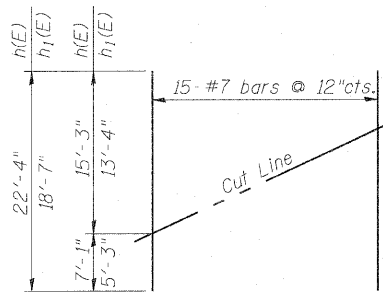
DRAIN DETAIL



* Cut a(E) bars to fit skew. Use balance of bar in opposite end. Place hooks at alternating sides.

Notes:

For Collar Details see sheet 9 of 16.
For Wingwall Details see sheets 10 thru 12 of 16.
For bar bend details and Bill of Materials see sheet 10 of 16.



**** FIELD CUTTING DIAGRAM**

Order h(E) and h₁(E) bars full length. Cut to fit and use remainder in opposite end.

PLAN TOP SLAB

BOX CULVERT END SECTION TOP SLAB DETAILS
U.S. RTE. 52 OVER WEST AUX SABLE CREEK
F.A.P. 607 - SECTION 129BR
KENDALL COUNTY
STATION 108+07
STRUCTURE NO. 047-2019

DESIGNED	S.D.S.
CHECKED	C.W.C.
DRAWN	D.L.H.
CHECKED	S.D.S./C.W.C.

WHKS & CO.
ENGINEERS PLANNERS LAND SURVEYORS
MASON CITY, IOWA DUBUQUE, IOWA AMES, IOWA
E. DUBUQUE, ILLINOIS SPRINGFIELD, ILLINOIS ROCHESTER, MINNESOTA