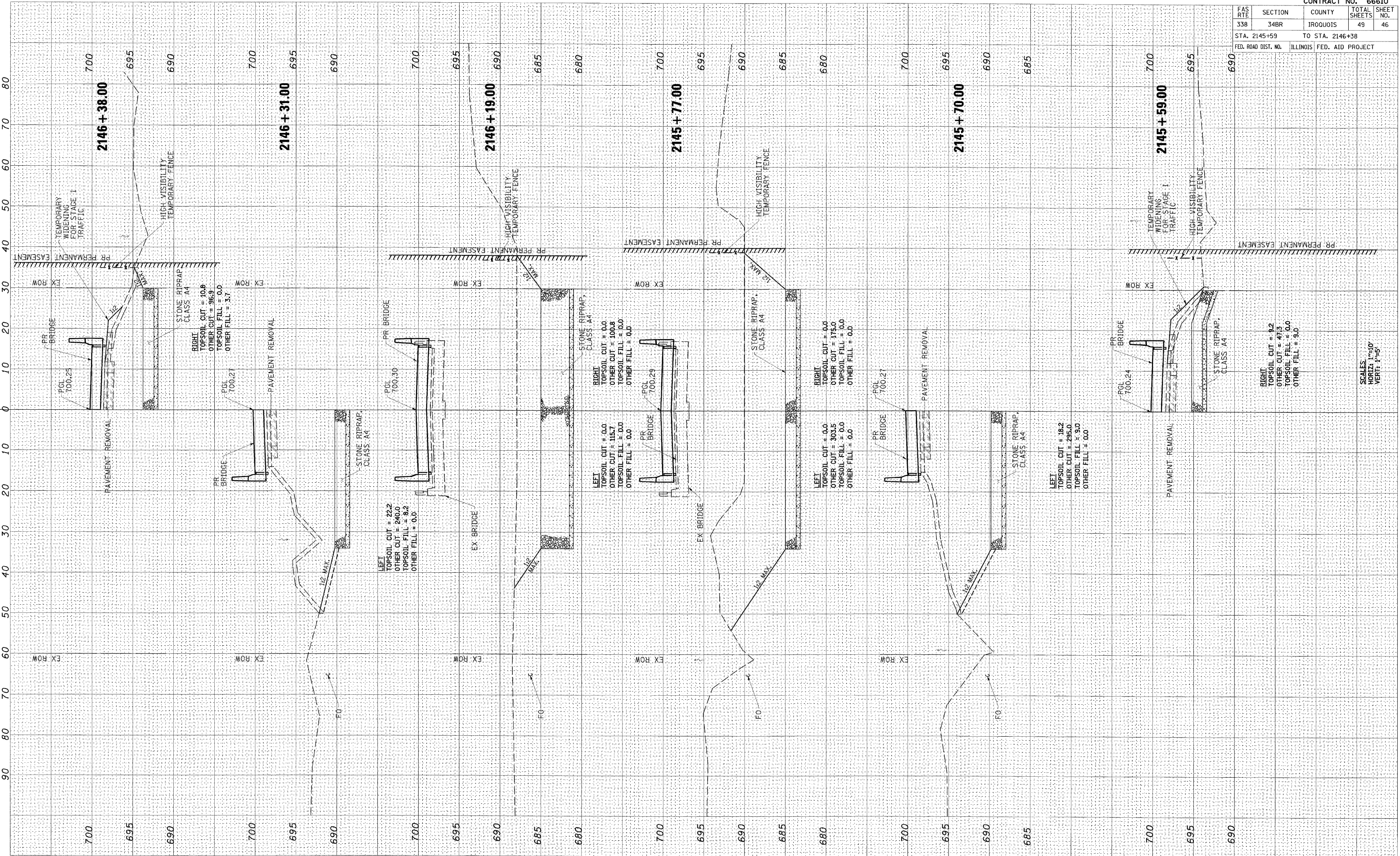


FAS RTE	SECTION	COUNTY	TOTAL SHEETS	SHEET NO.
338	34BR	IR000015	49	46
STA. 2145+59		TO STA. 2146+38		
FED. ROAD DIST. NO.		ILLINOIS		
		FED. AID PROJECT		

FINAL SURVEY	DATE
FLIPPED	
NOTE BOOK	
AREAS CHECKED	

ORIGINAL SURVEY	DATE
FLIPPED	
NOTE BOOK	
AREAS CHECKED	

Q FAS RTE 338 (US 45)



FAS RTE 338 (US 45) CROSS SECTIONS
STA 2145+59 TO STA 2146+38

SCALES:
HORIZ: 1"=50'
VERT: 1"=5'