

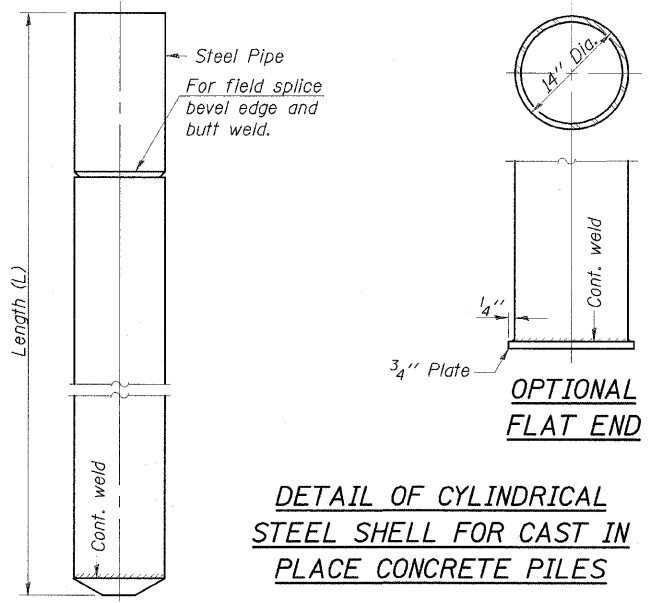
ROUTE NO.	SECTION	COUNTY	TOTAL SHEETS	SHEET NO.
FAS 338	34BR	IROQUOIS	49	34
STA.	TO STA.			
FED. ROAD DIST. NO. 3	ILLINOIS	FED. AID PROJECT-		
DWG. NO. 11 OF 13				

CONTRACT NO. 66610

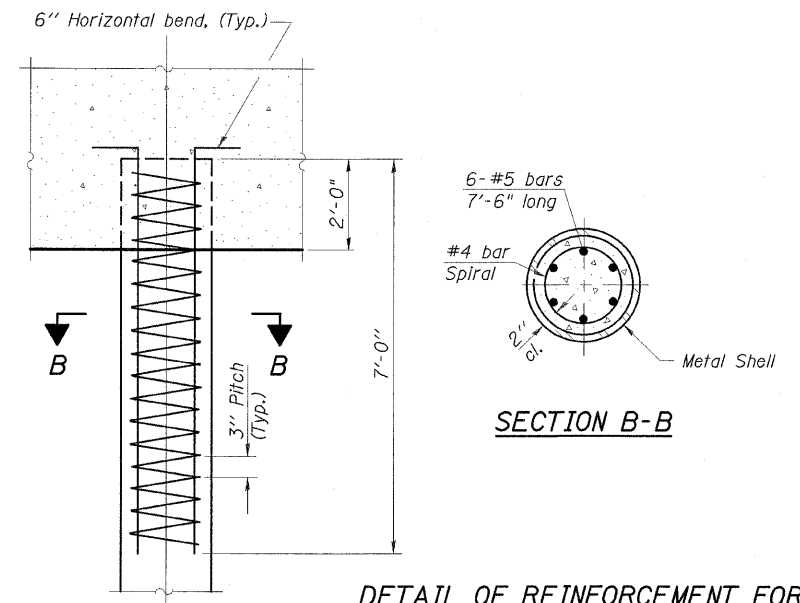
STRUCTURE INDEX OF SHEETS

General Plan	Dwg. No. 1 of 13
General Data	Dwg. No. 2 of 13
Stage Construction Details	Dwg. No. 3 of 13
Temporary Concrete Barrier	Dwg. No. 4 of 13
Top of Slab Elevations	Dwg. No. 5 of 13
Superstructure	Dwg. No. 6 of 13
Superstructure Details	Dwg. No. 7-8 of 13
Abutments	Dwg. No. 9 of 13
Piers	Dwg. No. 10 of 13
Metal Shell Pile Details	Dwg. No. 11 of 13
Bar Splicer Assembly Details	Dwg. No. 12 of 13
Soil Borings	Dwg. No. 13 of 13

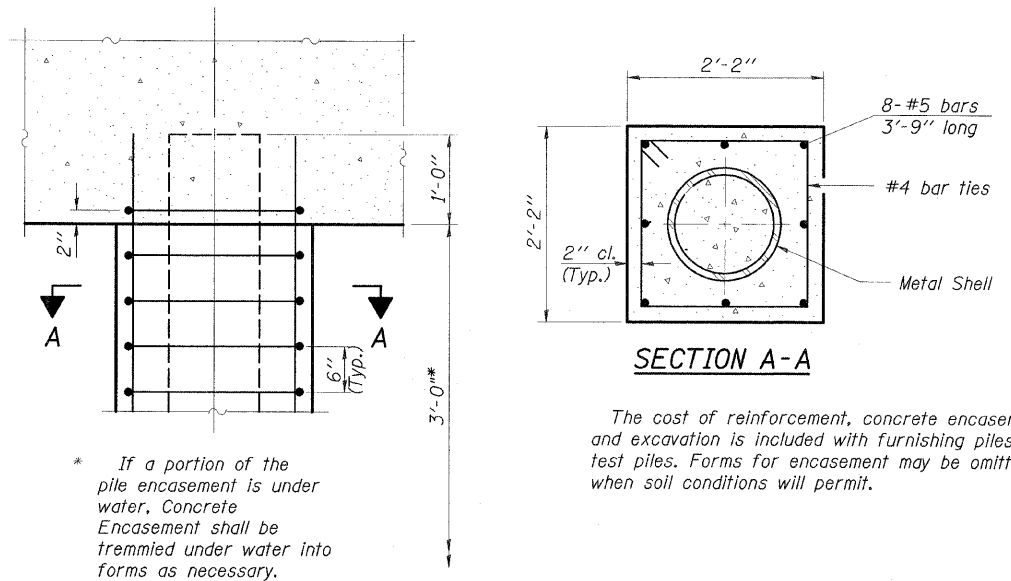
Notes:
 Driving and bearing ends of pipe shall be cut square.
 The thickness of the shell shall be 0.250 inches with a tolerance of 5%.
 The shell shall be according to Article 1006.05(a) of the Standard Specifications.



DETAIL OF CYLINDRICAL STEEL SHELL FOR CAST IN PLACE CONCRETE PILES



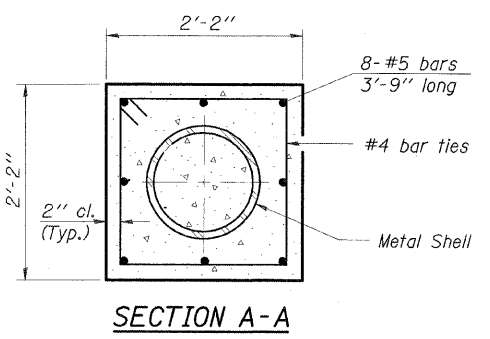
DETAIL OF REINFORCEMENT FOR METAL SHELLS AT ABUTMENTS



DETAIL OF PROTECTION FOR METAL SHELLS AT PIERS

* If a portion of the pile encasement is under water, Concrete Encasement shall be tremmied under water into forms as necessary.

The cost of reinforcement, concrete encasement, and excavation is included with furnishing piles and test piles. Forms for encasement may be omitted when soil conditions will permit.



SECTION A-A

METAL SHELL PILE DETAILS
US ROUTE 45 OVER
SPRING CREEK
FAS ROUTE 338 - SECTION 34BR
IROQUOIS COUNTY
STATION 2146+00
STRUCTURE NO. 038-0214

ESCA		
CONSULTANTS, INC.		
DESIGNED BY:	ELH	12/04
DRAWN BY:	HAG	12/04
CHECKED BY:	ELH	04/06
APPROVED BY:	RDP	04/06