

ROUTE NO.	SECTION	COUNTY	TOTAL SHEETS	SHEET NO.
FAS 338	34BR	TROQUOIS	49	32
STA.	TO STA.			
FED. ROAD DIST. NO. 5	ILLINOIS	FED. AID PROJECT-		
DWG. NO. 9 OF 13				

CONTRACT NO. 66610

STRUCTURE INDEX OF SHEETS

General Plan	Dwg. No. 1 of 13
General Data	Dwg. No. 2 of 13
Stage Construction Details	Dwg. No. 3 of 13
Temporary Concrete Barrier	Dwg. No. 4 of 13
Top of Slab Elevations	Dwg. No. 5 of 13
Superstructure	Dwg. No. 6 of 13
Superstructure Details	Dwg. No. 7-8 of 13
Abutments	Dwg. No. 9 of 13
Piers	Dwg. No. 10 of 13
Metal Shell Pile Details	Dwg. No. 11 of 13
Bar Splicer Assembly Details	Dwg. No. 12 of 13
Soil Borings	Dwg. No. 13 of 13

NOTES

1. Reinforcement bars designated (E) shall be epoxy coated.
2. See Dwg. No. 1 of 13 for backfill and drainage required for abutment construction.
3. See Dwg. No. 11 of 13 for Detail of Reinforcement for Metal Shells at Abutments.

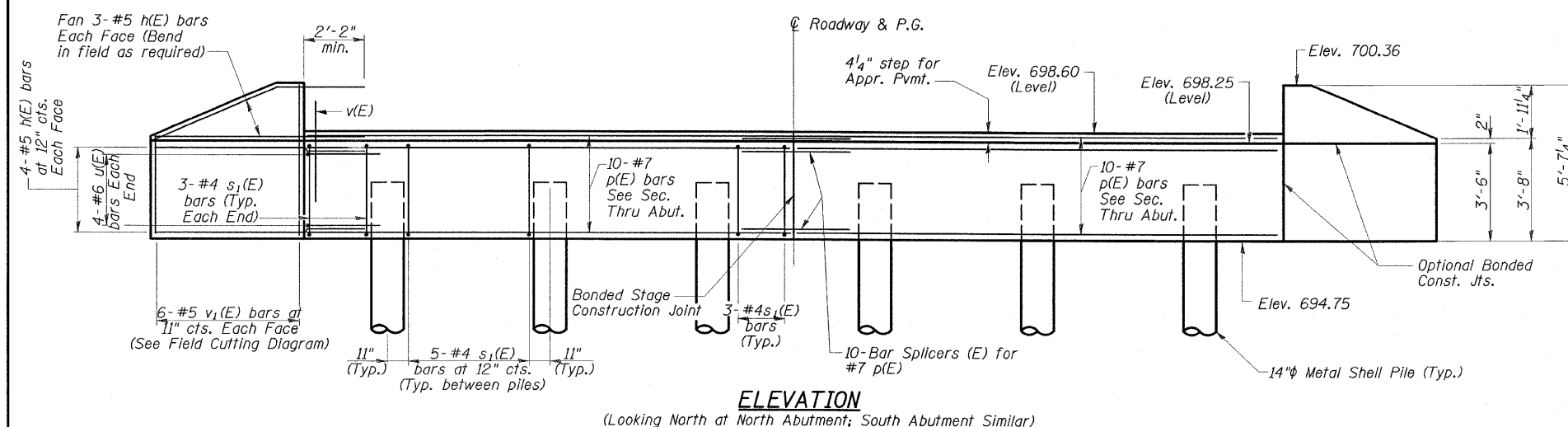
ABUTMENT BILL OF MATERIAL

(FOR ONE ABUTMENT UNLESS NOTED OTHERWISE)

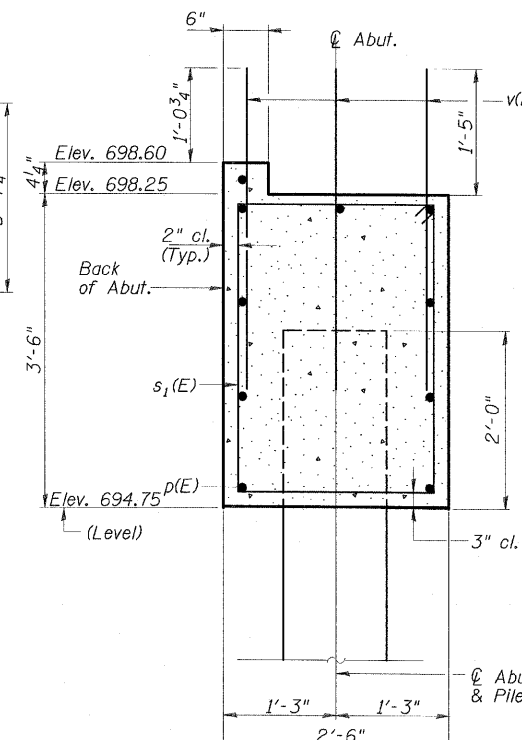
Bar	No.	Size	Length	Shape
h(E)	28	#5	7'-0"	—
p(E)	20	#7	17'-3"	—
s ₁ (E)	32	#4	11'-3"	□
u(E)	8	#6	7'-7"	—
v(E)	102	#5	3'-7"	—
v ₁ (E)	12	#5	8'-6"	—
N. Abut. S. Abut.				
Concrete Structures	Cu. Yd.	13.0	13.0	
Reinforcement Bars, Epoxy Coated	Pound	1740	1740	
Structure Excavation	Cu. Yd.	56	56	
Test Pile	Each	1	1	
Metal Shells				
Furnishing Metal Shell Piles 14"x0.25"	Lin. Ft.	245	280	
Driving Piles	Lin. Ft.	245	280	
Bar Splicers	Each	10	10	
Geocomposite Wall Drain	Sq. Yd.	18	18	
Pipe Underdrains for Structures 4"	Foot	63	63	

**ABUTMENTS
US ROUTE 45 OVER
SPRING CREEK**

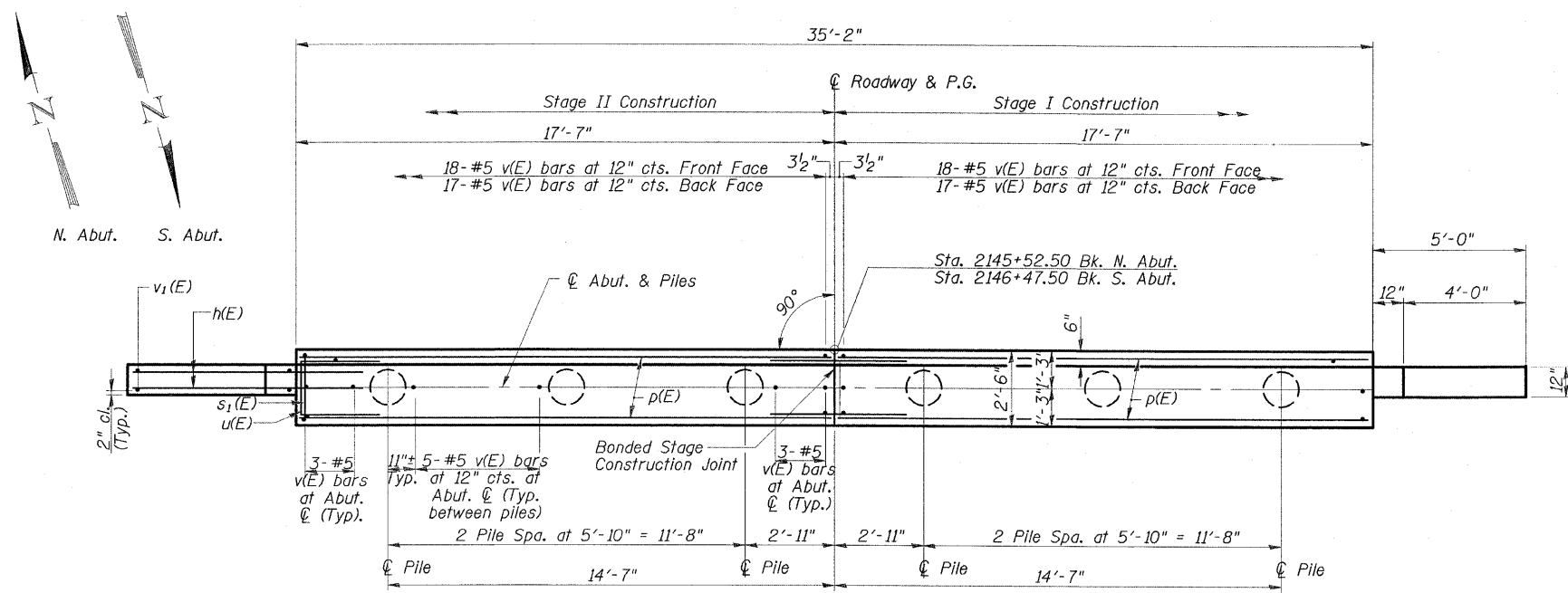
FAS ROUTE 338 - SECTION 34BR
TROQUOIS COUNTY
STATION 2146+00
STRUCTURE NO. 038-0214



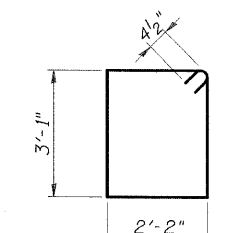
ELEVATION
(Looking North at North Abutment; South Abutment Similar)



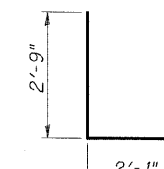
SECTION THRU ABUTMENT



PLAN
(North Abutment Shown; South Abutment Similar)

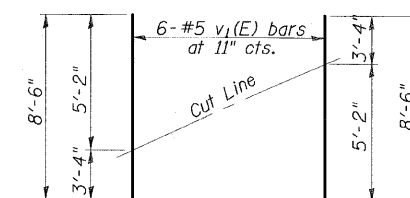


BAR s₁(E)



BAR u(E)

BAR BENDING DETAILS



BAR v₁(E)

FIELD CUTTING DIAGRAM

Order v₁(E) full length. Cut as shown and use remainder of bars in opposite face.

PILE DATA

Type & Size: Metal Shell - 14 in. dia. x 0.25 in. walls
Nominal Required Bearing: 240 kips
Allowable Resistance Available: 80 kips
Estimated Length: 49' (N. Abut.)
56' (S. Abut.)
No. Required: 5+1 test pile each abutment; 12 total

ESCA
CONSULTANTS, INC.

DESIGNED BY:	ELH	01/05
DRAWN BY:	HAG	01/05
CHECKED BY:	ELH	09/08
APPROVED BY:	RDP	09/08