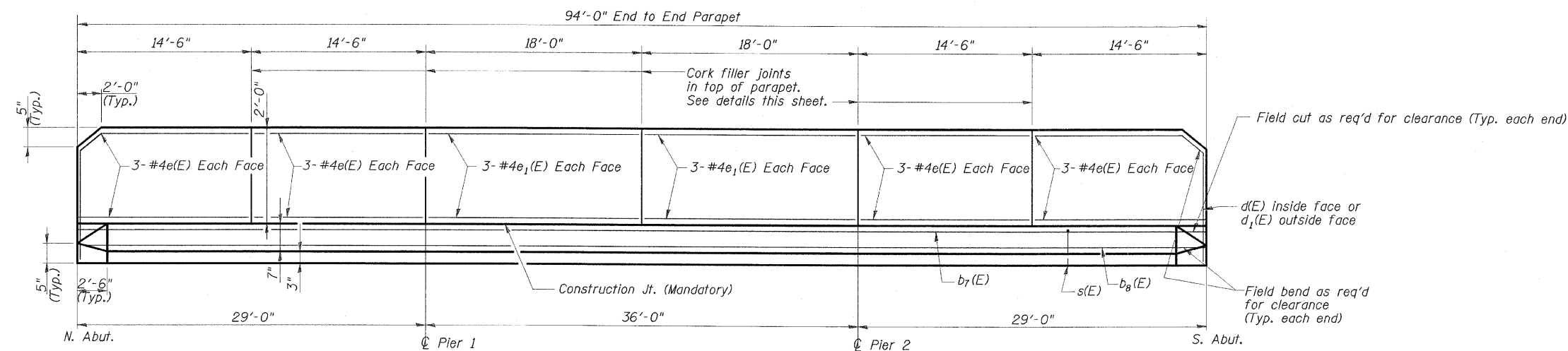


ROUTE NO.	SECTION	COUNTY	TOTAL SHEETS	SHEET NO.
FAS 338	34BR	IROQUOIS	49	30
STA.		TO STA.		
FED. ROAD DIST. NO. 3		ILLINOIS		
FED. AID PROJECT-				

DWG. NO. 7 OF 13
CONTRACT NO. 66610

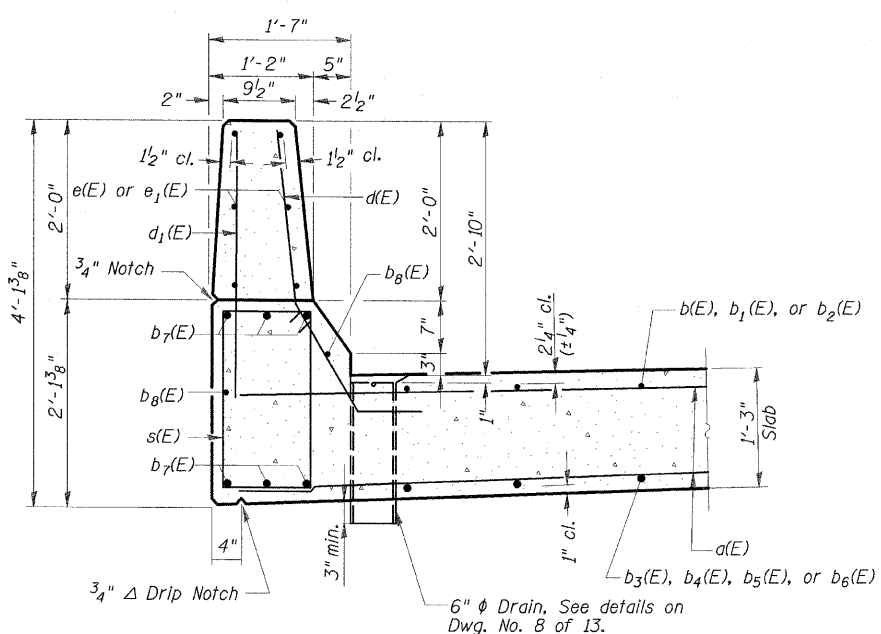


STRUCTURE INDEX OF SHEETS

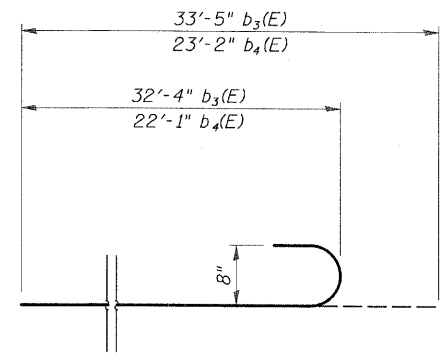
General Plan	Dwg. No. 1 of 13
General Data	Dwg. No. 2 of 13
Stage Construction Details	Dwg. No. 3 of 13
Temporary Concrete Barrier	Dwg. No. 4 of 13
Top of Slab Elevations	Dwg. No. 5 of 13
Superstructure	Dwg. No. 6 of 13
Superstructure Details	Dwg. No. 7-8 of 13
Abutments	Dwg. No. 9 of 13
Piers	Dwg. No. 10 of 13
Metal Shell Pile Details	Dwg. No. 11 of 13
Bar Splicer Assembly Details	Dwg. No. 12 of 13
Soil Borings	Dwg. No. 13 of 13

Note: See Dwg. No. 6 of 13 for slab and edge beam reinforcement.

INSIDE ELEVATION OF PARAPET
(East Parapet shown; West Parapet similar)



SECTION THRU PARAPET

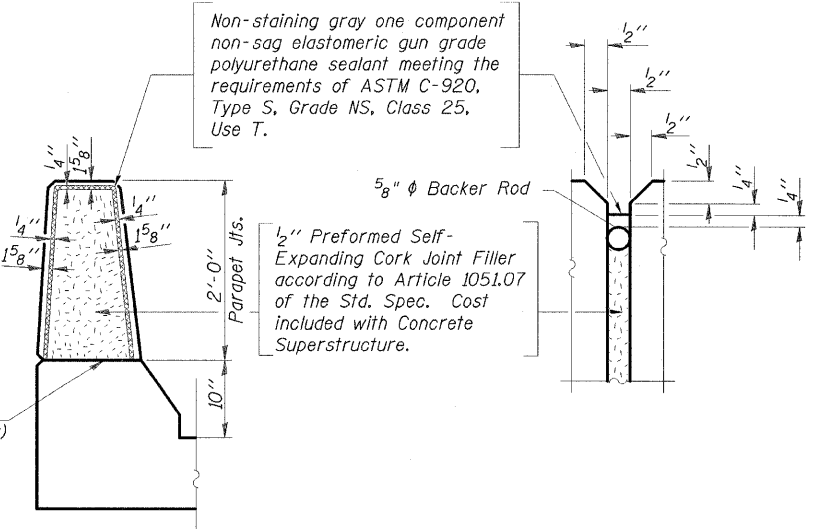


BARS b3(E) & b4(E)

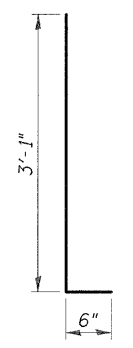
SUPERSTRUCTURE BILL OF MATERIAL

Bar	No.	Size	Length	Shape
a(E)	372	#5	17'-2"	—
b(E)	68	#9	37'-10"	—
b1(E)	64	#9	14'-0"	—
b2(E)	68	#5	16'-6"	—
b3(E)	80	#8	33'-5"	U
b4(E)	76	#8	23'-2"	U
b5(E)	40	#8	36'-0"	—
b6(E)	38	#8	20'-6"	—
b7(E)	36	#8	33'-6"	—
b8(E)	12	#5	32'-6"	—
d(E)	194	#5	3'-10"	U
d1(E)	190	#4	3'-1"	—
d2(E)	12	#5	3'-7"	U
e(E)	48	#4	14'-3"	—
e1(E)	24	#4	17'-9"	—
s(E)	188	#4	6'-4"	□
x(E)	72	#5	7'-0"	W
x1(E)	72	#5	5'-2"	W
Reinforcement Bars, Epoxy Coated	Pound	44,680		
Concrete Superstructure	Cu. Yds.	182.4		
Bar Splicers	Each	186		

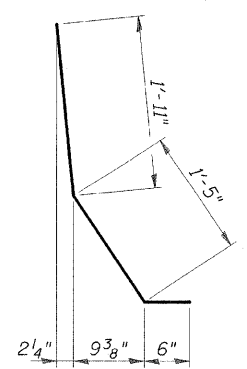
Reinforcement bars designated (E) shall be epoxy coated.
Name Plate to be mounted on inside face of parapet. See Dwg. Nos. 1 and 2 of 13.



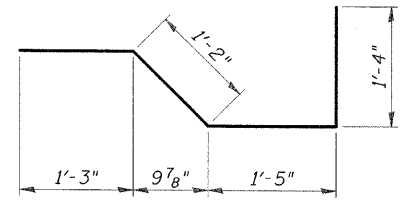
PARAPET JOINT DETAILS



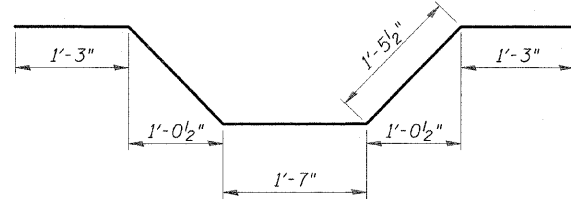
BAR d2(E)



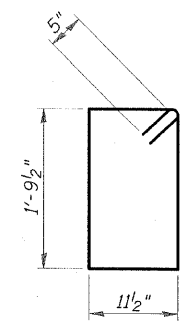
BAR d(E)



BAR x1(E)



BAR x(E)



BAR s(E)

SUPERSTRUCTURE DETAILS
US ROUTE 45 OVER
SPRING CREEK
FAS ROUTE 338 - SECTION 34BR
IROQUOIS COUNTY
STATION 2146+00
STRUCTURE NO. 038-0214

ESCA
CONSULTANTS, INC.

DESIGNED BY:	ELH	12/04
DRAWN BY:	HAG	12/04
CHECKED BY:	ELH	04/06
APPROVED BY:	RDP	04/06