

ROUTE NO.	SECTION	COUNTY	TOTAL SHEETS	SHEET NO.
FAS 338	34BR	IROQUOIS	49	24
STA.	TO STA.		ILLINOIS	
FED. ROAD DIST. NO. 8	ILLINOIS	FED. AID PROJECT		
DWG. NO. 1 OF 13				

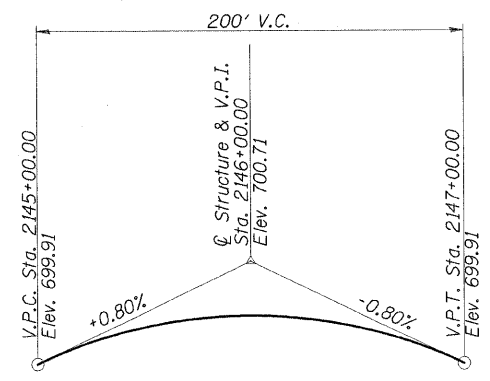
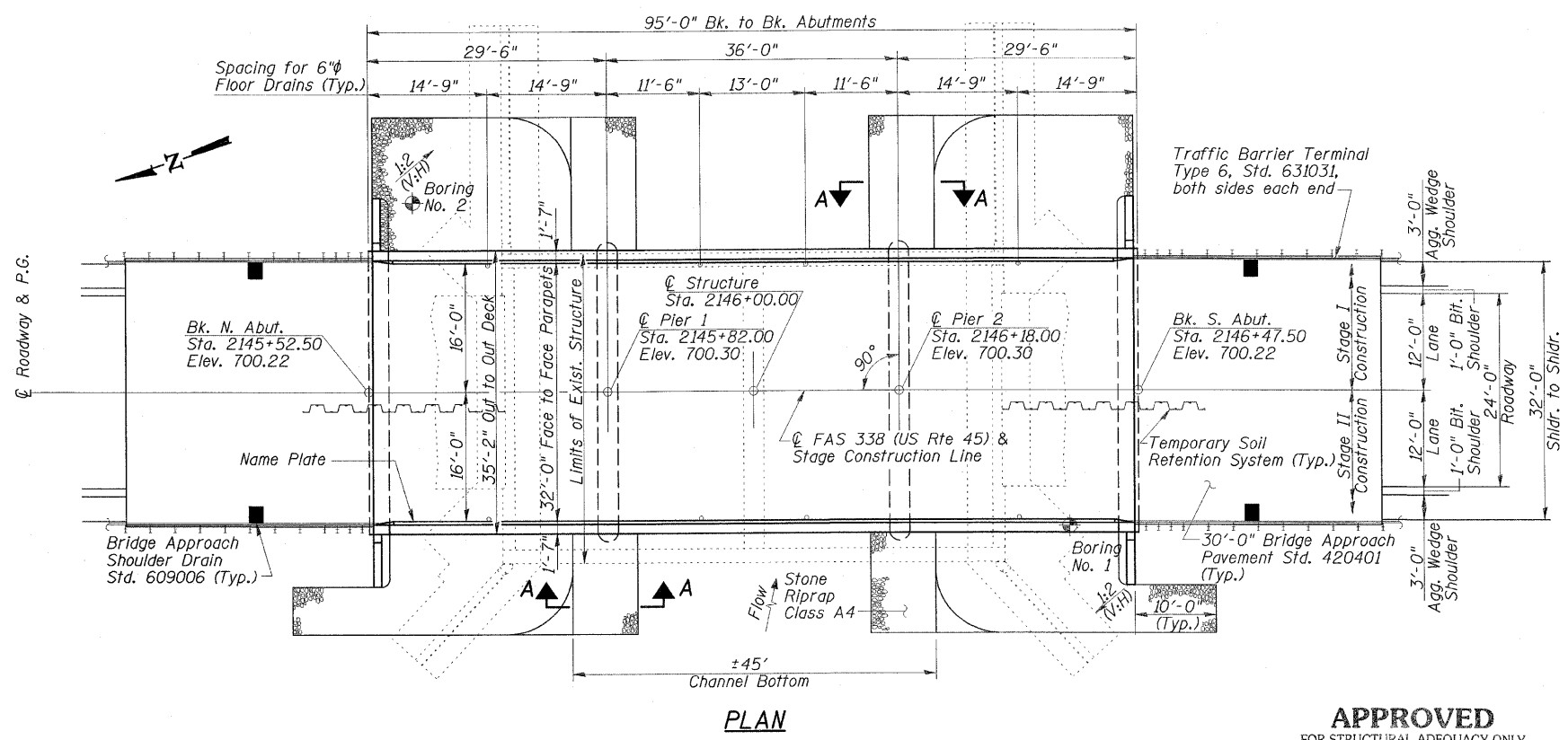
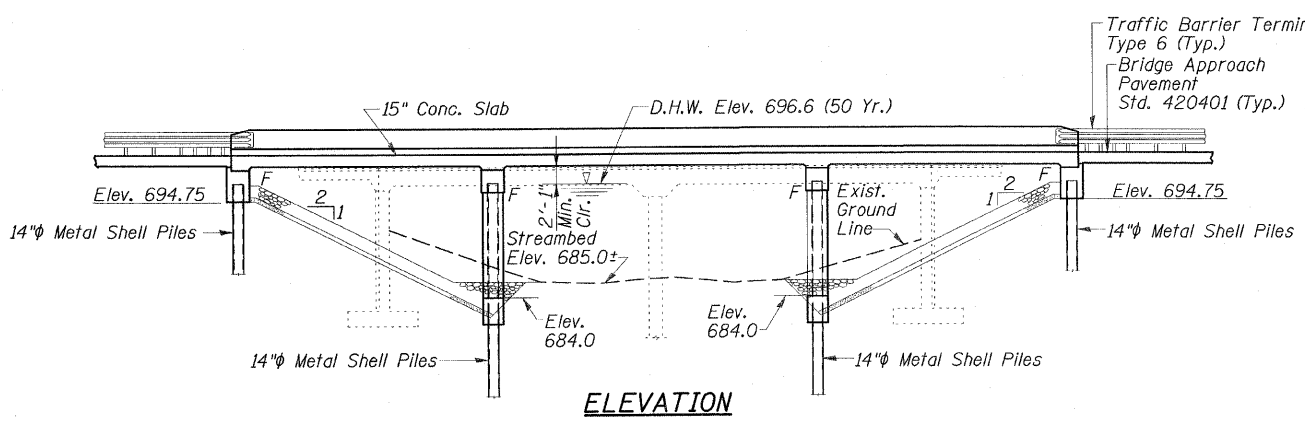
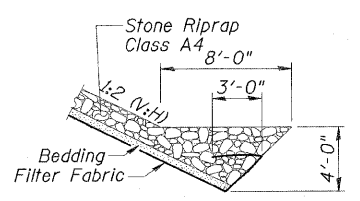
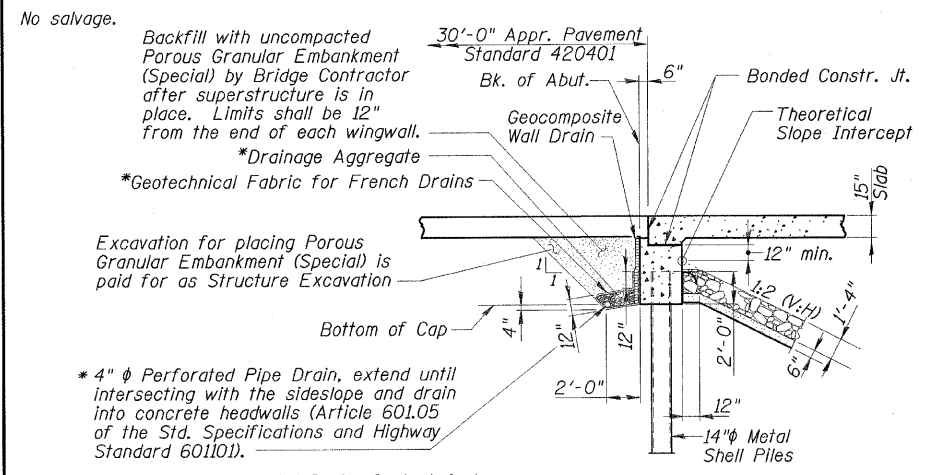
CONTRACT NO. 66610

STRUCTURE INDEX OF SHEETS

General Plan	Dwg. No. 1 of 13
General Data	Dwg. No. 2 of 13
Stage Construction Details	Dwg. No. 3 of 13
Temporary Concrete Barrier	Dwg. No. 4 of 13
Top of Slab Elevations	Dwg. No. 5 of 13
Superstructure	Dwg. No. 6 of 13
Superstructure Details	Dwg. No. 7-8 of 13
Abutments	Dwg. No. 9 of 13
Piers	Dwg. No. 10 of 13
Metal Shell Pile Details	Dwg. No. 11 of 13
Bar Splicer Assembly Details	Dwg. No. 12 of 13
Soil Borings	Dwg. No. 13 of 13

BENCHMARK: Chiseled "X" on top of Southeast Wingwall, SN 038-0044; Elev. 698.79.

EXISTING STRUCTURE: SN 038-0044 was originally built in 1922 as SBI Rte. 25, Section 34. Superstructure replaced and substructure widened in 1952 as FA Rte 26 (SBI Rte 25) Section 34-B-Y. The structure consists of 2 spans of a continuous reinforced concrete slab on closed abutments and a center concrete open pile bent pier. The bridge is 61'-4" bk.-bk. abuts. and 38'-4" O.-O. deck. Existing structure is to be removed and replaced. One lane of traffic will be maintained utilizing Stage Construction.



WATERWAY INFORMATION

Drainage Area = 34.22 Sq. Mi. Exist. Low Grade Elev. = 696.8 Ft. @ Sta. 2141+00
 Prop. Low Grade Elev. = 697.8 Ft. @ Sta. 2132+00

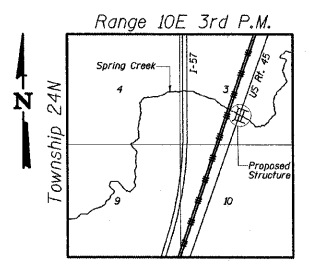
Flood	Freq. Yr.	Q C.F.S.	Opening Sq. Ft.		Nat. H.W.E.		Head-Ft.		Headwater El.	
			Exist.	Prop.	Exist.	Prop.	Exist.	Prop.	Exist.	Prop.
Design	10	1810	506	565	695.7	0.9	0.9	696.6	696.6	
Base	50	2636	554	637	696.6	1.5	1.3	698.1	697.9	
Existing Overtopping	100	2962	555	654	696.8	1.7	1.5	698.5	698.3	
Proposed Overtopping	20	1900	511	-	695.8	1.0	-	696.8	-	
	50	2600	-	629	696.5	-	1.3	-	697.8	

DESIGN SPECIFICATIONS
2002 AASHTO

LOADING HS20-44
Allow 50 psf for future wearing surface.

DESIGN STRESSES
FIELD UNITS
 $f'_c = 3,500$ psi
 $f_y = 60,000$ psi (Reinf.)

SEISMIC DATA
Seismic Performance Category (SPC) = A
Bedrock Acceleration Coefficient (A) = 0.045g
Site Coefficient (S) = 1.2



APPROVED
FOR STRUCTURAL ADEQUACY ONLY

Ralph E. Anderson
ENGINEER OF BRIDGES AND STRUCTURES



EXPIRES 11-30-09

Richard D. Payne
SIGNATURE

09-09-08
DATE

GENERAL PLAN
US ROUTE 45 OVER
SPRING CREEK
FAS ROUTE 338 - SECTION 34BR
IROQUOIS COUNTY
STATION 2146+00
STRUCTURE NO. 038-0214

ESCA
CONSULTANTS, INC.

DESIGNED BY:	ELH	12/04
DRAWN BY:	HAG	12/04
CHECKED BY:	ELH	09/08
APPROVED BY:	RDP	09/08