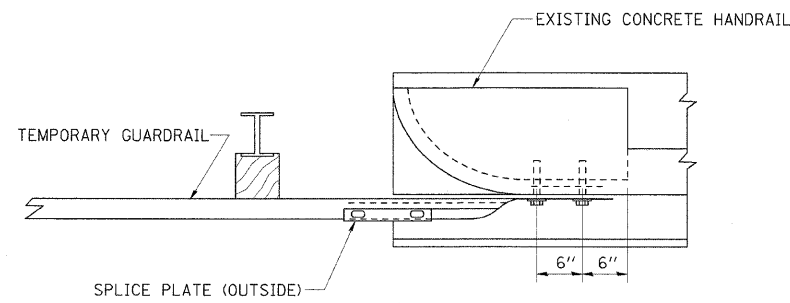
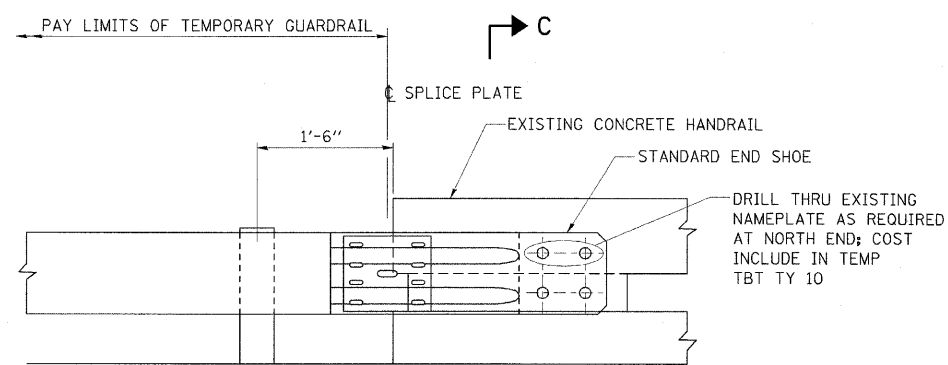


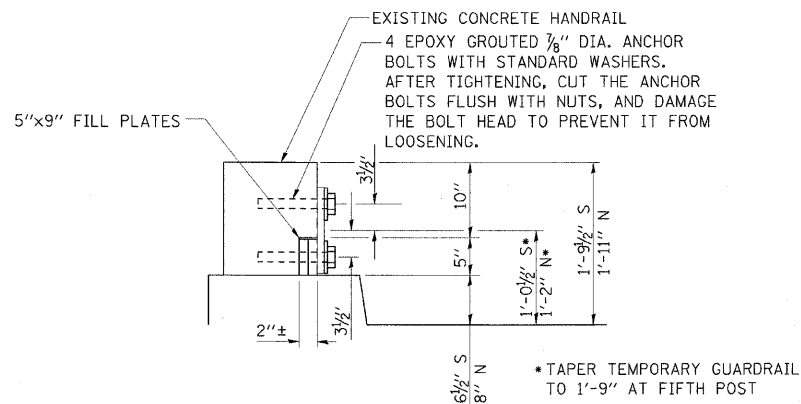
FAS RTE	SECTION	COUNTY	TOTAL SHEETS	SHEET NO.
338	34BR	IROQUOIS	49	22
STA.		TO STA.		
FED. ROAD DIST. NO.	ILLINOIS	FED. AID PROJECT		



PLAN



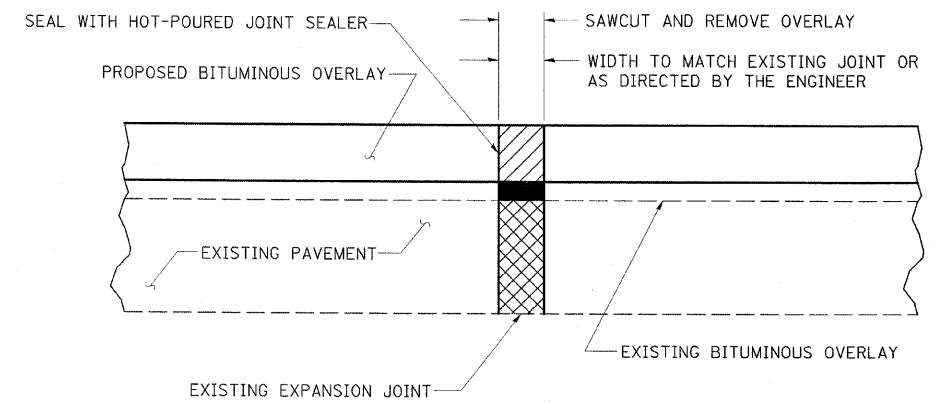
ELEVATION



SECTION C-C

TEMPORARY TRAFFIC BARRIER TERMINAL, TYPE 10 DETAILS

NOTE:
SEE STANDARD 630001
FOR DETAILS OF GUARDRAIL
NOT SHOWN.



EXPANSION JOINT REHABILITATION DETAIL

STATION 2145+09±, STATION 2146+85±

NOTES:

1. THE NEW BITUMINOUS OVERLAY SHALL BE SAWED, REMOVED, AND THE JOINT AREA CLEANED. PRIOR TO PLACING THE HOT-POURED JOINT SEALER THE JOINT SHALL BE BLOWN OUT WITH COMPRESSED AIR.
2. THIS WORK SHALL BE PAID FOR AT THE CONTRACT UNIT PRICE PER FOOT FOR EXPANSION JOINT REHABILITATION.

ESCA
CONSULTANTS, INC.

DESIGNED BY:	ELH	11/05
DRAWN BY:	CJG	12/05
CHECKED BY:	ELH	04/06
APPROVED BY:	RDP	04/06

MISCELLANEOUS DETAILS
FAS ROUTE 338 (US 45)
SECTION 34BR
IROQUOIS COUNTY