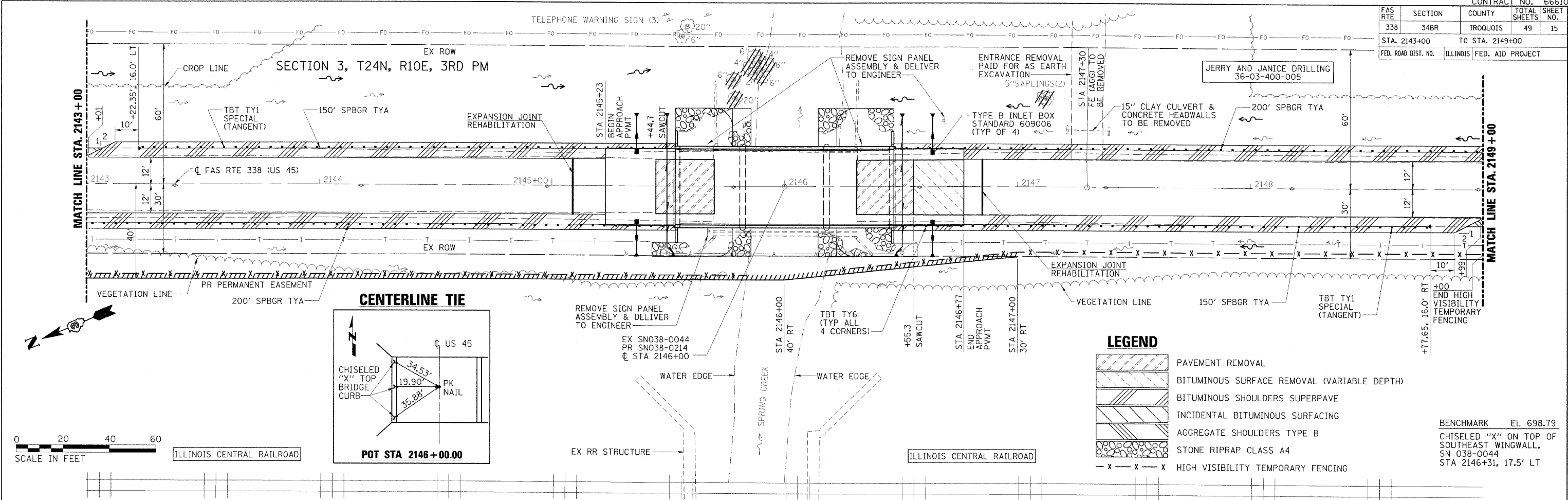
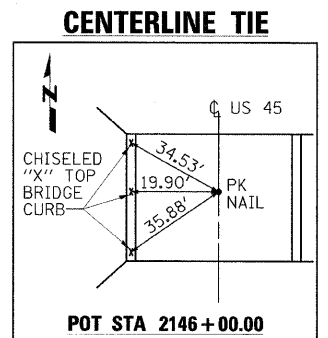
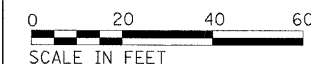


| FAS RTE | SECTION | COUNTY | TOTAL SHEETS | SHEET NO. |
|---------------------|---------|---------------------------|--------------|-----------|
| 338 | 348R | IROQUOIS | 49 | 15 |
| STA. 2143+00 | | TO STA. 2149+00 | | |
| FED. ROAD DIST. NO. | | ILLINOIS FED. AID PROJECT | | |



DATE: _____ BY: _____
 SURVEYED: _____
 PLAN: _____
 NOTE BOOK: _____
 NO. OF WAYS CHECKED: _____
 ROAD FILE NAME: _____

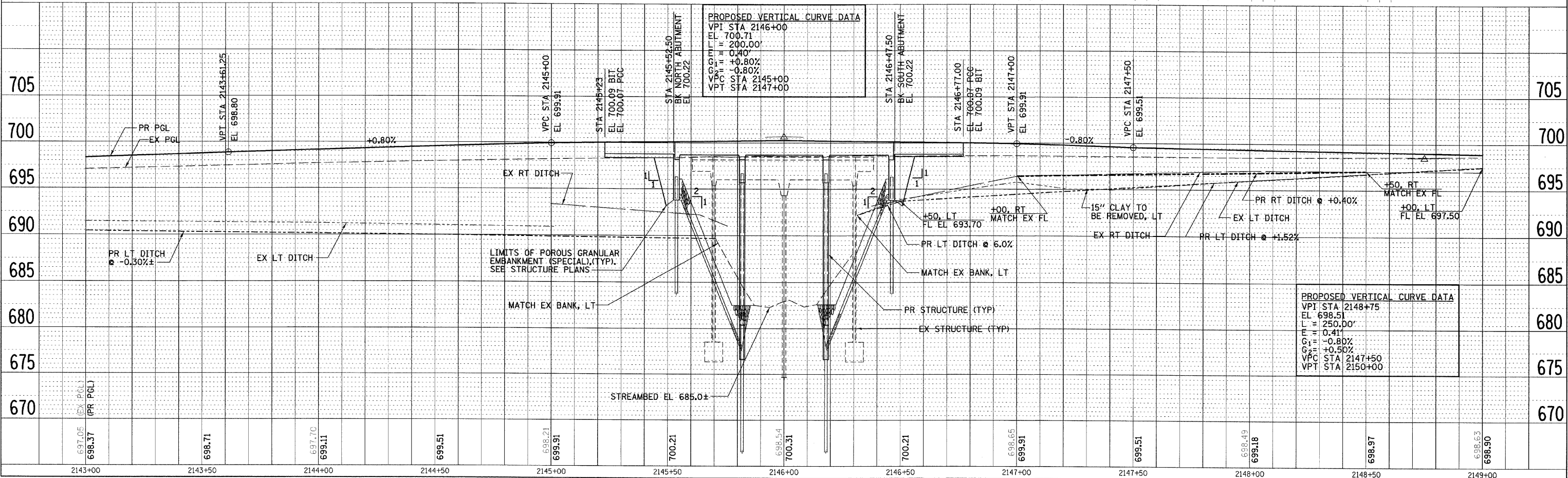


LEGEND

- PAVEMENT REMOVAL
- BITUMINOUS SURFACE REMOVAL (VARIABLE DEPTH)
- BITUMINOUS SHOULDERS SUPERPAVE
- INCIDENTAL BITUMINOUS SURFACING
- AGGREGATE SHOULDERS TYPE B
- STONE RIPRAP CLASS A4
- x - x - x HIGH VISIBILITY TEMPORARY FENCING

BENCHMARK EL 698.79
 CHISELED "X" ON TOP OF
 SOUTHEAST WINGWALL,
 SN 038-0044
 STA 2146+31, 17.5' LT

DATE: _____ BY: _____
 SURVEYED: _____
 PROFILE: _____
 NOTE BOOK: _____
 NO. OF WAYS CHECKED: _____
 ROAD FILE NAME: _____



PROPOSED VERTICAL CURVE DATA

| | |
|-----------------|-----------|
| VPI STA 2146+00 | EL 700.71 |
| VPC STA 2145+00 | EL 700.00 |
| VPT STA 2147+00 | EL 700.22 |
| G ₁ | +0.80% |
| G ₂ | -0.80% |
| L | 200.00' |

PROPOSED VERTICAL CURVE DATA

| | |
|-----------------|-----------|
| VPI STA 2148+75 | EL 698.51 |
| VPC STA 2147+50 | EL 697.50 |
| VPT STA 2150+00 | EL 699.51 |
| L | 250.00' |
| E | 0.41' |
| G ₁ | -0.80% |
| G ₂ | +0.50% |

**FAS RTE 338 (US 45) PLAN & PROFILE
 STA 2143+00 TO STA 2149+00**